



# The Mercedes-Benz eSprinter.

Panel Van model.

Prices effective from 1 June 2022.

Mercedes-Benz





RETURN TO START

## Contents

> <b>Model overview</b>	<b>3</b>
> <b>Trims</b>	
eSprinter PROGRESSIVE	<b>4</b>
> <b>Colours and Upholstery</b>	<b>5</b>
> <b>Equipment</b>	<b>6</b>
> <b>Charging options</b>	<b>11</b>
> <b>Battery and eMotor</b>	<b>12</b>
> <b>Range, Performance and CO<sub>2</sub> emissions</b>	<b>13</b>
> <b>Weights and payloads</b>	<b>13</b>
> <b>Dimensions</b>	<b>14</b>
> <b>eReady finance</b>	
Latest eSprinter Panel Van offer	<b>15</b>
> <b>List prices</b>	<b>16</b>
> <b>EQ Ready App</b>	<b>17</b>
> <b>After care</b>	<b>18</b>
> <b>Approved Used</b>	<b>19</b>

### Please note

This document provides information about the model range line-up and specifications of the Sprinter. It also contains key details about options, economy and performance of all variants. Details are correct at time of publication and are subject to revision. Any images used in this document may not reflect UK specification and are for illustrative purposes only. Images may show optional equipment which does not form part of UK standard specification.



# The Mercedes-Benz eSprinter.



RETURN TO START

1 van model:	Panel Van – 3 seats
1 length:	5,932mm
1 trim:	PROGRESSIVE
2 charging powers:	AC: 7.2kW DC: 80kW
3 linear speed limiters:	75mph (Standard) 62mph (Optional) 50mph (Optional)

## Combined WLTP ranges:

**82.6 miles** (75mph speed limiter) –  
**95.7 miles** (50mph speed limiter)\*

## Charging times:\*

- AC charging **0-100% in 8 hours**
- DC 80 kW **up to 80% in 30 minutes**



Discover more about the other Mercedes-Benz Sprinter diesel models in our range:

▶ [The Sprinter diesel range](#)

Discover more about the other Mercedes-Benz electric models:

▶ [The electric vehicles range](#)

\*Charging times are subject to the power available at the location where the vehicle will be charged as well as factors such as temperature and cable type used. Time stated is based on 7.4/80 KW power available.

# The eSprinter PROGRESSIVE.

Features include:

## Interior

- Charging cable, mode 3 (type 2, 3x20A), 8m
- Comfort overhead control panel
- Driver's armrest
- Dual Passenger seat
- Full-width partition
- Heated seat for driver
- Height and rake steering wheel
- Hinged lid for stowage compartment
- Semi-automatic TEMPATIC air conditioning
- Wooden flooring

## Exterior

- 270° double-wing rear-end doors
- Headlight assistant
- Heat-insulating glass
- Linear speed limiter 75mph

## Efficiency, reliability and connectivity

- Active Brake assist
- ADAPTIVE ESP\*
- ATTENTION assist
- Crosswind assist
- Double locks
- Integrated connected Thatcham approved alarm system
- Keyless start
- Mercedes-Benz audio system with DAB radio, a Bluetooth® interface, hands-free function and USB port
- Mercedes me (via an App)

From £54,590<sup>^</sup>

<sup>^</sup>Based on an eSprinter Van PROGRESSIVE L2 H2 FWD (DC 80kW)

### • 1 length available • Charging times<sup>†</sup>

L2: 5,140mm

AC: 0-100% – 8 hours using the Wallbox Type 2: (7.2kW)

DC: 10-80% – 30 min using rapid charging DC 80kW

## Government OZEV grant of up to £5,000

The eSprinter is eligible for a Government OZEV grant that gives businesses 35% off the purchase price, up to a maximum of £5,000\*.



### ▶ Arrange a test drive at your nearest Dealership

\* Vehicle purchase price is calculated on base vehicle only (excluding any optional equipment), it excludes delivery charges and first registration fee. The grant will be applied after any vehicle discount has been offered and includes VAT and number plate costs. For more information, visit: <https://www.gov.uk/plug-in-car-van-grants>

<sup>†</sup> Charging times are subject to the power available at the location where the vehicle will be charged as well as factors such as temperature and cable type used. Time stated is based on 7.4/80 KW power available.



The Mercedes-Benz eSprinter 4

# Colours and upholstery.



RETURN TO START

## Solid paints



Arctic White (Standard)



Jupiter Red



Steel Blue



Blue Grey



Jet Black

## Metallic paints



Cavansite Blue Metallic



Tenorite Grey Metallic



Selenite Grey Metallic



Obsidian Black Metallic

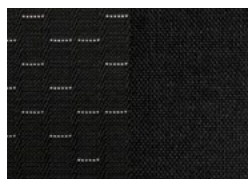


Iridium Silver Metallic

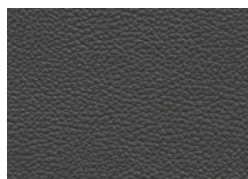
## Interior upholstery



Maturin black fabric  
(Standard)



Caluma black fabric



Black ARTICO man-made  
leather

➤ [For paint pricing, see page 6](#)

➤ [For upholstery pricing, see page 7](#)

# Equipment (standard and optional overview).



RETURN TO START

Every eSprinter model comes with a host of standard features, plus a range of optional equipment and packages you can add to enhance your van.

Key: ● Standard ○ Optional ◇ Equipment dependant option available — Not available

Equipment	Description	Option code	Progressive Panel Van	Basic Price exc. VAT	Basic Price inc. VAT
<b>Exterior Features</b>					
Paint	<b>Metallic paint</b>	/	○	£565.00	£678.00
Bodywork	<b>Mounting rails for roof rack</b>	D13	○	£170.00	£204.00
Tyres	<b>Mud and slush tyres</b> The M+S tyres can improve traction and lateral support in wintry road conditions, improving driving safety on snow, ice and mud.	RM1	○	£145.00	£174.00
	<b>Summer Tyres</b>	RM7	●	£0.00	£0.00
Wheels	<b>16" Steel Wheels</b>	RS3	●	£0.00	£0.00
	<b>16" Full wheel cover</b>	RD8	○	£95.00	£114.00
	<b>16" Black Light Alloy Wheels</b>	RM3	○	£755.00	£906.00
	<b>16" Light Alloy Wheel</b>	RL5	○	£650.00	£780.00
<b>Interior Features</b>					
Grab Handles	<b>Grab handles for driver's and co-driver's doors</b>	T75	○	£65.00	£78.00
Heating and Ventilation	<b>Heated driver's seat</b>	H16	●	£0.00	£0.00
	<b>Heated co-driver's seat</b>	H15	○	£155.00	£186.00
	<b>TEMPMATIC air conditioning</b> Cools and dehumidifies the air. Features a particulate filter to remove particles of dust and pollen from the outside air.	HH9	●	£0.00	£0.00
Seating	<b>Comfort driver's seat</b> Single armrest on the side facing the front passenger; fore/aft adjustment (225mm in total, with 4.5mm intervals); stepless adjustment of the seat backrest angle; stepless seat height adjustment; comfort head restraint adjustable for angle and height.	SB1	○	£110.00	£132.00
	<b>Comfort co-driver's seat</b> Comfort driver and co-driver seat with inboard armrests and 4-way adjustable headrests. This deletes the double co-driver seat and therefore limits the cab area to two occupants.	SB2	○	£110.00	£132.00
	<b>Double co-driver's seat</b> Bench seat with 2x three-point seat belts, height-adjustable head restraints, and a fixed 17° backrest.	S23	●	£0.00	£0.00

Changes to individual option availability and combinations may occur depending on vehicle specification choices and the continuing evolution and adaptation of our product range. These changes may not be immediately reflected in this document as they occur, but will be introduced at the next revision opportunity.

# Equipment (standard and optional overview).



RETURN TO START

Equipment	Description	Option code	Progressive Panel Van	Basic Price exc. VAT	Basic Price inc. VAT
<b>Interior Features (cont.)</b>					
Seating (cont.)	<b>Lumbar support for driver's seat</b> Electro-pneumatically operated dual-cushion 4-way lumbar support, adjusted using a switch on the outer side of the seat cushion. The position of the air cushions can also be adjusted for height.	SE5	○	£65.00	£78.00
	<b>Lumbar support for co-driver's seat</b> Not compatible with Double co-driver seat (S23).	SE4	○	£65.00	£78.00
Steering Wheel	<b>Height and rake adjustable steering wheel</b> Manually adjustable by 4.8° in tilt and 60mm in / out.	CL1	●	£0.00	£0.00
Storage	<b>Hinged lid for stowage compartments left and right</b>	FJ5	○	£95.00	£114.00
	<b>Stowage compartment underneath cockpit</b>	FJ4	●	£0.00	£0.00
	<b>Storage overhead compartment - driver's side</b>	FX0	○	£60.00	£72.00
Trim and Upholstery	<b>Black Maturin fabric seat upholstery</b>	VF7	●	£0.00	£0.00
	<b>Black Caluma fabric seat upholstery</b>	VF4	○	£60.00	£72.00
	<b>Black ARTICO seat upholstery</b> The black man-made leather lends the interior a comfortable aspect and impresses with its low-maintenance surface.	VF6	○	£60.00	£72.00
<b>Technology, Software and Electrics</b>					
Audio Entertainment	<b>MB Audio System</b> DAB Radio and USB socket	E10 / E1D	-	£0.00	£0.00
Keys	<b>Two additional master keys</b>	FZ9	○	£110.00	£132.00
<b>Driver's Assistance and Safety</b>					
Airbags	<b>Driver's airbag</b>	SA5	●	£0.00	£0.00
	<b>Co-driver's airbag</b>	SA6	○	£320.00	£384.00
	<b>Driver's thorax-pelvis sidebag</b>	SH1	○	£235.00	£282.00
	<b>Co-driver's thorax-pelvis sidebag</b>	SH2	○	£235.00	£282.00
Driver's Assistance	<b>Active Brake assist</b> Active Brake assist can help to prevent accidents with vehicles ahead and crossing pedestrians or to mitigate their consequences.	BA3	●	£0.00	£0.00
	<b>ATTENTION assist</b> The ATTENTION assist drowsiness detection system can recognise early signs of fatigue on long routes and night-time drives, and prompt the driver to take a break from driving.	JW8	●	£0.00	£0.00

● Standard ○ Optional ◇ Equipment dependant option available — Not available

# Equipment (standard and optional overview).



RETURN TO START

Equipment	Description	Option code	Progressive Panel Van	Basic Price exc. VAT	Basic Price inc. VAT
<b>Driver's Assistance and Safety (cont.)</b>					
Driver's Assistance (cont.)	<b>Blind Spot assist</b> Blind Spot assist can help prevent accidents when changing lanes, for example on the motorway. Includes: Electrically foldable exterior mirrors (F64) and Exterior mirror heated and electrically adjustable (F68).	JA7	○	£420.00	£504.00
	<b>Comfort overhead control panel</b> LED interior lighting including cab downlighting and co-/driver reading lamps; also includes a convenient spectacles compartment.	LC4	●	£0.00	£0.00
	<b>Crosswind assist</b> Crosswind assist detects track offset caused by strong crosswind gusts in due time and helps the driver to stay in lane.	JA8	●	£0.00	£0.00
	<b>Headlight Assistant</b> A windscreen sensor continuously monitors light conditions and automatically switches the dipped beams on/off upon reaching pre-defined limits.	LA2	●	£0.00	£0.00
	<b>Highbeam assist</b> Highbeam assist automatically switches the main beams on and off in line with the traffic situation and thereby relieves the driver of manually switching back and forth between main beams and dipped beams.	LA1	○	£265.00	£318.00
	<b>Jack</b>	Y36	●	£55.00	£66.00
	<b>Lane Keeping assist</b> Lane Keeping assist can help prevent accidents caused by unintentional lane departures with visual, audible and tactile signals.	JW5	○	£0.00	£0.00
	<b>Rain sensor</b> The rain sensor automatically regulates the wiping frequency of the windscreen wipers with activated intermittent wiping, which makes things easier for the driver.	JF1	○	£105.00	£126.00
	<b>Reversing camera with display in rear view mirror</b>	FR3	○	£505.00	£606.00
	<b>Reversing warning device</b> The reverse warning alarm warns pedestrians and other road users audibly of the reversing vehicle and thereby enhances their safety.	JW0	○	£170.00	£204.00
	<b>Speed Limiter (50 mph)</b>	MK5	○	£0.00	£0.00
	<b>Speed Limiter (62 mph)</b>	MD2	○	£0.00	£0.00
	<b>Speed Limiter (75 mph)</b>	MD3	●	£0.00	£0.00
	<b>Wet Wiper System</b> The WET WIPER SYSTEM windscreen wiper cleans the window without the splash of water that usually briefly disrupts the driver's field of view. Includes: Rain sensor (JF1).	FM3	○	£105.00	£126.00

● Standard ○ Optional ◇ Equipment dependant option available — Not available



# Equipment (standard and optional overview).



RETURN TO START

Equipment	Description	Option code	Progressive Panel Van	Basic Price exc. VAT	Basic Price inc. VAT
<b>Driver's Assistance and Safety (cont.)</b>					
<b>Safety Equipment</b>	<b>Accident recovery and roadside assistance</b> The vehicle will automatically call the Mercedes-Benz Customer Assistance Center at a press of a button to provide the driver with professional help in the event of an emergency.	EY6	●	£0.00	£0.00
	<b>First aid kit</b>	Y10	○	£0.00	£0.00
<b>Safety Equipment</b>	<b>Fire extinguisher</b>	Y16	○	£105.00	£126.00
	<b>Warning Triangle</b>	Y44	○	£0.00	£0.00
<b>Security</b>	<b>Anti-theft protection package</b> Thatcham category 1 approved. Cab interior and load-space monitoring with battery back-up siren and tow-away protection.	FY1	●	£0.00	£0.00
	<b>Double Locks</b>	FY2	●	£0.00	£0.00
<b>Lighting</b>					
<b>Lighting</b>	<b>Front fog lights with cornering function</b>	L13	○	£200.00	£240.00
	<b>LED lightstrip in load compartment</b>	LC2	○	£250.00	£300.00
<b>Loading and Towing</b>					
<b>Bulkhead</b>	<b>Full-width partition</b> The full-width bulkhead at B-pillar protects driver and front passenger from the load and shields the driver compartment from the load compartment, keeping dirt, dust and noise away from the driver's compartment.	D50	●	£0.00	£0.00
	<b>Full-width partition with 1 window</b> The full-width partition wall on the B-pillar with window allows a view into the cargo area or the view to the rear and shields the driver's compartment from the load compartment.	D51	○	£65.00	£78.00
<b>Load Area</b>	<b>Interior wood panelling to roof height in load compartment</b> The 5mm-thick wooden panelling of the vehicle sidewalls extending up to roof height protects the sheet metal in the load compartment from damage caused by the cargo.	VA2	○	£295.00	£354.00
	<b>Load securing rail system</b>	VV2	○	£200.00	£240.00
	<b>Plastic Floor covering</b>	VK8	○	£455.00	£546.00
	<b>Wood load flooring</b> Multiple-bonded 10mm thick weatherproof plywood floor, coated with hard-wearing phenolic resin film, and featuring a non-slip textured grid surface.	V43	●	£0.00	£0.00

● Standard ○ Optional ◇ Equipment dependant option available — Not available

# Equipment (standard and optional overview).



RETURN TO START

Equipment	Description	Option code	Progressive Panel Van	Basic Price exc. VAT	Basic Price inc. VAT
<b>Mirrors and Windows</b>					
<b>Mirrors</b>	<b>Electrically folding wing mirrors</b> Fold-in/out function is operated via controls in the driver door.	F64	○	£50.00	£60.00
	<b>Heated, electrically adjustable wing mirrors</b> Mirror heating reduces condensation in cold weather and prevents icing-up of the mirrors. The exterior mirrors are heated automatically upon vehicle start when the outside temperature is low or when the rear defrost function is activated.	F68	○	£170.00	£204.00
<b>Windows</b>	<b>Heat-insulating glass</b> Windscreen (laminated glass), side windows and rear window (single-pane safety glass) are tinted green, reducing the sunlight's heating effect on the interior.	H20	○	£130.00	£156.00
	<b>Heat-insulating glass with band filter</b> Green-tinted window panes and a dark filter band on the windscreen.	H21	●	£0.00	£0.00
<b>Charging Accessories</b>					
<b>Cables</b>	<b>4m Charging cable (spiral)</b> Type 2. 3x20A	E4L	○	£321.00	£354.00
	<b>4m Charging cable (straight)</b> Type 2. 3x 32A	E3L	○	£405.00	£486.00
	<b>8m Charging cable (straight)</b> Type 2. 3x20A	E8L	●	£0.00	£0.00

● Standard ○ Optional ◇ Equipment dependant option available — Not available

# Charging options – maximise efficiency and reduce downtime.

## › The eSprinter can be charged via Direct Current (DC) and Alternating Current (AC).

The DC option offers speed, while AC is more cost effective for overnight charging. When choosing your eSprinter you have a choice of two DC rapid charging power variant options†:

- DC 80kW: 10 – 80% charge in 30 minutes
- DC 20kW: 10 – 80% charge in 2 hours.

DC is available at most UK service stations and will charge your vehicle faster but requires more energy to do so. Both eSprinter variants can also be charged via AC.

AC requires longer intervals to fully charge† but uses less energy:

- AC 7.2kW: 0-100% in 8 hours.

## › Managing range and battery performance.

The eSprinter uses a process called recuperation that recovers energy when the vehicle is decelerating to help you efficiently manage your vehicle's range. There are 4 recuperation modes available, which can be adjusted via the gearshift paddles. The greater the recuperation, the faster you decelerate and therefore, the more energy your vehicle will regenerate:

- D- This mode will enable you to get maximum range from your Sprinter. It has maximum recuperation and fastest deceleration. Due to the deceleration being so strong, your vehicle will automatically activate your brake lights.
- D This mode has less recuperation than D- and has similar deceleration levels to a diesel Sprinter.
- D+ This mode has significantly lower recuperation levels and therefore will decelerate at a slower rate than a diesel Sprinter.
- D++ This is a coasting mode, meaning your vehicle will have no deceleration and will significantly reduce your vehicle's range.

† Charging times are subject to the power available at the location where the vehicle will be charged as well as factors such as temperature and cable type used. Time stated is based on 7.4/80 KW power available.



# Battery and eMotor.



RETURN TO START

	PROGRESSIVE	
Fuel	Electricity	
eMotor output, max.	85kW	
	114hp	
Combined WLTP ranges	82.6 miles (75mph speed limiter) – 95.7 miles (50mph speed limiter)*	
Torque, max.	295Nm	
Driven Axle	Front	
Battery Composition	Lithium Ion	
Battery Capacity	55kWh (47kWh useable)	
Battery Voltage	365	
Battery Charging Power	AC: 7.4kW / DC: 20kW	AC: 7.4kW / DC: 80kW
Battery Charging Time	AC: 0-100% – 8 hours DC: 10-80% – 120 minutes**	AC: 0-100% – 8 hours DC: 10-80% – 30 minutes**
Charging cable	8m long – Type 2, 3x20a Other cables available – please see page 10	

\* Figures correct as of March 2021. For real time data visit [https://voc.mercedes-benz.com/voc/gb\\_en](https://voc.mercedes-benz.com/voc/gb_en).

\*\* Charging times are subject to the power available at the location where the vehicle will be charged as well as factors such as temperature and cable type used. Time stated is based on 7.4/80 KW power available.

Did you know the average commercial vehicle in Europe does less than 62 miles<sup>^</sup> a day?

<sup>^</sup> Mercedes-Benz research analysed 1.6 million journeys anonymously on the EQ Ready app and 96% of all journeys recorded were shorter than 100km (62 miles).



# Range, performance and CO<sub>2</sub> emissions.



RETURN TO START

Model	Speed Limiter	CO <sub>2</sub> emissions (g/km)	Combined	WLTP Range (Miles)				Combined	WLTP Range (Km)			
				Low (Extra Urban)	Medium (Urban)	High (Rural)	Extra High (Motorway)		Low (Extra Urban)	Medium (Urban)	High (Rural)	Extra High (Motorway)
<b>Panel Van – PROGRESSIVE</b>												
eSprinter Van L2 H2	120km/h (75mph) standard	0	82.6	109.4	101.3	87.6	67.1	133	176	163	141	108
eSprinter Van L2 H2	80km/h (50mph) standard	0	95.7	109.4	101.3	92.6	93.8	154	176	163	149	151

Model	Speed Limiter	Combined	Energy Consumption (WLTP) kWh/100km			
			Low (Extra Urban)	Medium (Urban)	High (Rural)	Extra High (Motorway)
<b>Panel Van – PROGRESSIVE</b>						
eSprinter Van L2 H2	120km/h (75mph) standard	40.9	30.9	33.4	38.6	50.7
eSprinter Van L2 H2	80km/h (50mph) standard	35.8	30.9	32.6	36.6	36.5

Other speed limiters available (100km/h). Data shown illustrates the minimum and maximum range and consumption altered by speed limiters.

The indicated values were determined according to the prescribed measurement method – Worldwide Harmonised Light Vehicle Test Procedure (WLTP). Figures shown may include options which are not available in the UK. For Battery Electric Vehicles (BEV) figures determined with battery fully charged. The Mercedes-Benz eSprinter requires mains electricity for charging. Figures shown are for comparability purposes; only compare consumption, CO<sub>2</sub> and electric range figures with other vehicles tested to the same technical procedures. Figures may not reflect real life driving results, which will depend upon a number of factors including the starting charge of the battery, factory-fitted options, accessories fitted (post registration), variations in weather, driving styles and vehicle load. Zero emissions while driving. Further information about the test used to establish figures can be found at <http://www.mercedes-benz.co.uk/WLTP>

# Weights and payloads.

Model	Gross Vehicle Weight (Kg)	Unladen Weight (Kg)	Payload (Kg)	Gross Train Weight (Kg)
<b>Panel Van – PROGRESSIVE</b>				
eSprinter Van L2 H2	3,500	2,769	731	3,500

Please note: The stated payload weights are correct according to type approval data. The specific payload values for UK supplied vehicles may differ. The figure quoted only accounts for equipment which is included in the UK product offer as standard. Please speak to a dealer for final vehicle configurations and weights once all options and accessories have been added.

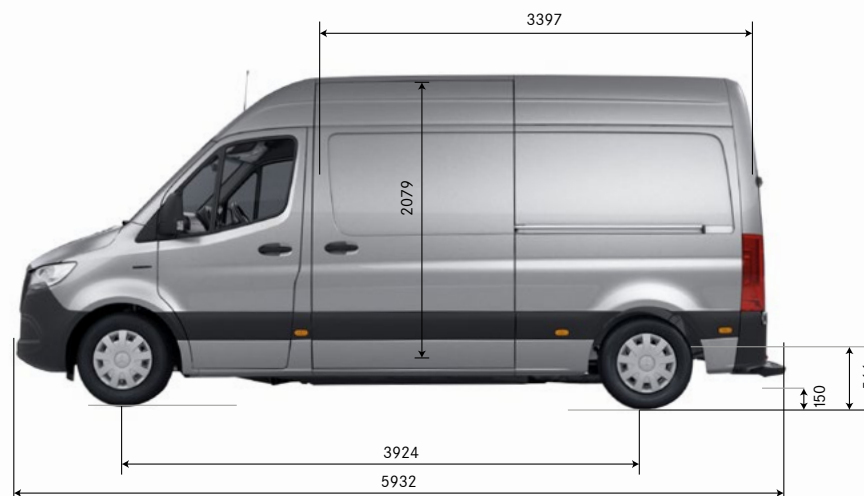
# Dimensions.



RETURN TO START

## FRONT-WHEEL DRIVE L2

Wheelbase	Wheelbase length	3,924mm
	Turning circle	15.7m
	Track circle	14.9m
	Front track width	1,759mm
	Rear track width	1,770mm
Vehicle	Length	5,932mm
	Height (unladen)	2,687mm
	Width (inc. wing mirrors)	2,345mm
	Ground clearance	150mm
Load compartment	Length	3,397mm*
	Load volume	11m <sup>3</sup>
	Max. width	1,787mm
	Width between wheel arches	1,412mm
	Height	2,079mm
	Rear loading height (step height from ground to load floor)	566mm



\* Measured on vehicle floor and includes 370mm for the space beneath the front seats.

# eReady finance – the flexible way to purchase your electric van.

If you're interested in an electric van but the idea of a lengthy finance agreement puts you off, our flexible eReady finance terms start from as little as 12 months. This allows you to make the switch with a level of commitment you feel comfortable with, and with a wide range of options at the end.

- Flexible finance terms available, starting from 12 months
- Love your electric van? You can purchase it at the end of the agreement
- Want to explore your options? Regularly review your finance and vehicle options, then return or part-exchange the van at the end of your contract
- Switch to another electric van in the Mercedes-Benz range when new models become available.

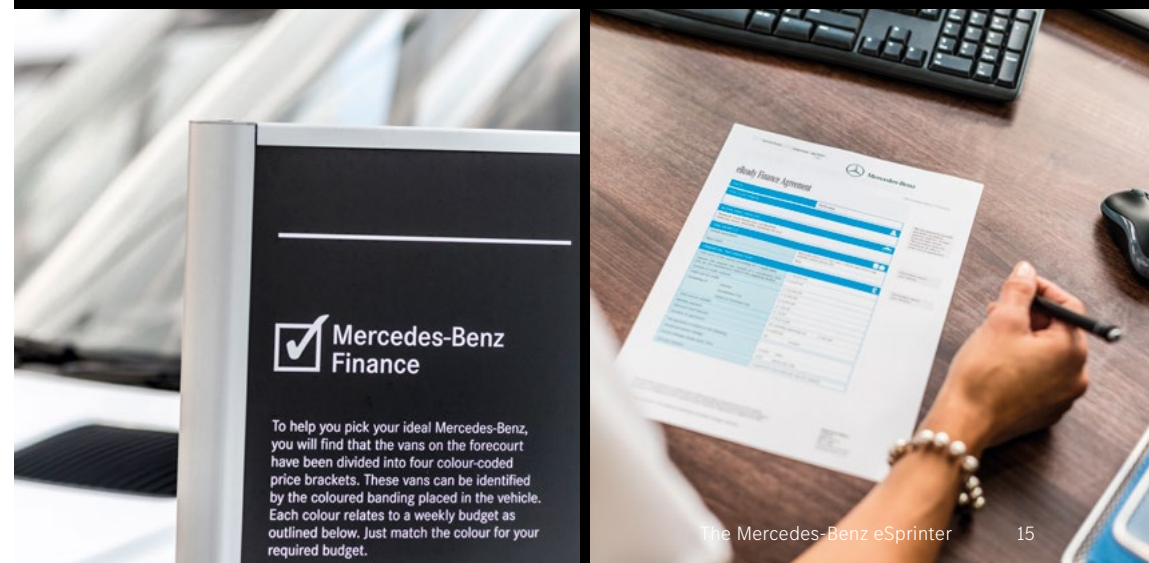
## ▶ [Learn more about our finance options](#)

or if you'd preferred to talk to a Dealer, find the nearest one to you:

## ▶ [Find your preferred Dealer](#)



RETURN TO START



The Mercedes-Benz eSprinter

15

# List prices.



RETURN TO START

Model	DC Charging Power	Drive	Basic Recommended Retail Price (Ex. VAT)	Basic Recommended Retail Price (Inc. VAT)
<b>Panel Van – PROGRESSIVE</b>				
eSprinter Van L2 H2	80kW	FWD	£54,590	£65,508

## The eSprinter offers additional saving options including:

### Government OZEV grant of up to £5,000

The eSprinter is eligible for a Government OZEV grant that gives businesses 35% off the purchase price, up to a maximum of £5,000\*.



\* Vehicle purchase price is calculated on base vehicle only (excluding any optional equipment), it excludes delivery charges and first registration fee. The grant will be applied after any vehicle discount has been offered and includes VAT and number plate costs. For more information, visit: <https://www.gov.uk/plug-in-car-van-grants>

This document is for guidance only and must be used in conjunction with a configuration tool prior to final specification decisions and vehicle quotations being prepared and accepted. List prices are quoted ex-factory unless otherwise stated. Delivery charges excluding VAT will be added to model prices quoted in this document. Prices based on standard finish paint choice. Mercedes-Benz Vans UK and authorised Dealers reserve the right to alter specification and vary prices without notice. The availability of options may depend on the chosen base vehicle and other optional equipment specified, and should be confirmed with your Mercedes-Benz Vans Dealer prior to order placement. VAT is calculated at the standard rate of 20%. Mercedes-Benz Vans UK Ltd, Tongwell, Milton Keynes, MK15 8BA.



# The EQ Ready App.

## Are you #eReady?

We know that not every business is ready to go electric – but if you want to find out whether it's right for you, the EQ Ready app is here to help. Take a free virtual test drive and analyse your electric driving potential using your current van, with no obligation and no pressure to make the switch.

- Easily simulate electric driving in your current van.
- Analyse your driving distances and behaviours to get a clear picture of your virtual range and the battery capacity you'd need.
- See public charging stations in your area and add private charging points (such as those owned by your employer or family/friends).
- Test your hypothetical battery's consumption at different temperature scenarios, and experiment with load weights for a realistic and detailed assessment.
- Get set up in seconds by downloading the app on Apple or Android now.



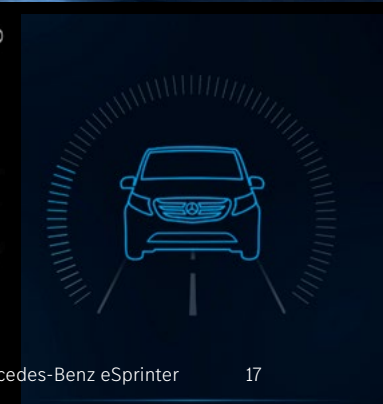
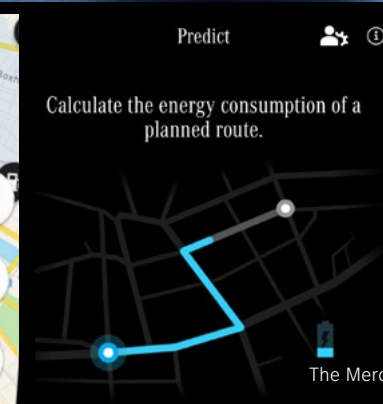
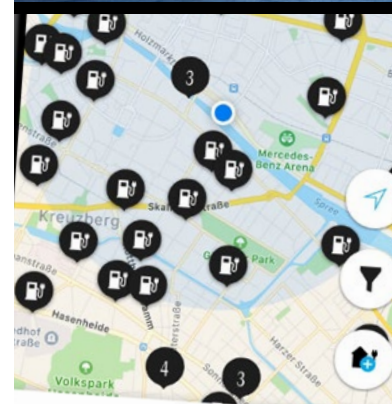
## Need further help?

When switching to a brand-new way of keeping your business moving, it's only natural you'll have questions. So, if there's anything you'd like to find out that's not covered in this brochure, then feel free to take a look at:

### ▶ [The Mercedes-Benz electric van guide](#)

or if you'd preferred to talk to a Dealer, find the nearest one to you:

### ▶ [Find your preferred Dealer](#)





# After care.

## Keeping Businesses Moving.

The support we provide doesn't end once you've driven away. We offer a number of ways to keep your business moving long into the future.

### ▶ Free roadside assistance

The Mercedes-Benz eSprinter comes with MobiloVan, our comprehensive roadside assistance cover, available for 24/7 for up to 30 years\*. If you misfuel, lose your keys, are involved in a road traffic accident, or if your van is vandalised or won't start, we'll send out a trained technician. With an average roadside repair rate of 80%, you'll be moving again in no time.

[Find out more about MobiloVan](#)

### ▶ 3 year vehicle warranty

Because we want to help keep businesses moving today and in the future, all our new vans come with a free 3 year unlimited mileage warranty.

### ▶ 8-year/160,000km battery guarantee

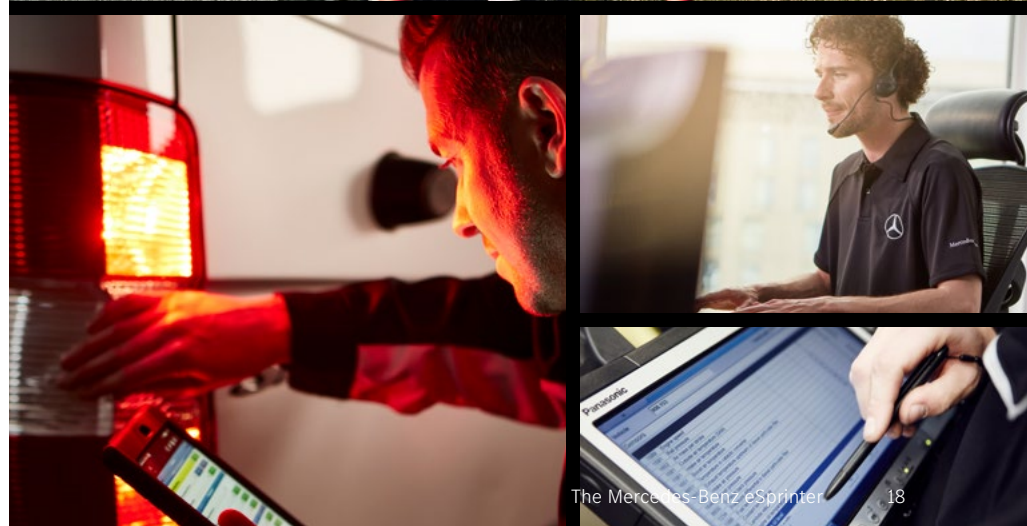
The eSprinter's battery benefits from an 8-year, 160,000km guarantee, and an expected battery capacity of at least 70% after 8 years – to keep you moving for longer.

### ▶ 24/7 Dealer network

Our nationwide network of approved Dealers is here to help your business maintain momentum. Most Dealers work until midnight and over a third are open 24/7.

[Find out more about our Dealer network](#)

\* Free for 3 years initially and renewed at each service, if serviced by MB according to service intervals for up to 30 years. 60 minutes is the average response rate and may differ. For a full list of exclusions and all product terms please visit [mbvans.co.uk/mobilovan](http://mbvans.co.uk/mobilovan)



The Mercedes-Benz eSprinter 18

# Mercedes-Benz Approved Used Electric vans. Get used to more...

## More choice. More confidence. More quality – and more added extras.

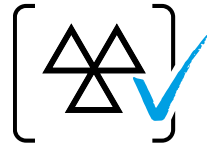
As a Mercedes-Benz Approved Used Electric customer, you'll have complete peace of mind as every van offers the same commitment to quality and workmanship as new and comes with:



Minimum 12-month warranty\*  
PLUS the option of monthly  
top-ups, up to 24 months\*



Free MOT test failure cover\*\*  
covering you for £1,500



Minimum  
3 months MOT



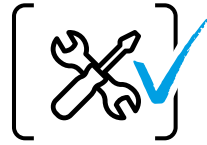
Free 24/7 breakdown cover  
and roadside assistance^



Free 7-day driveway  
van insurance^^



Comprehensive  
multi-point vehicle check



Discounted  
service plans

\*Warranty eligible up to 200,000 miles on approved used Mercedes-Benz Vans with less than 150,000 miles at point of sale. Top ups are to a maximum of 24 months. For full T&Cs, please speak to your preferred sales representative. \*\* MOT cover redeemable per 12-months warranty. £1,500 claims limit. For more information, please speak to your preferred sales representative. ^ Free for 12 months initially and renewed at each service, if serviced by MB according to service intervals for up to 30 years from when the vehicle was first registered. For a full list of exclusions and all product terms please visit [mbvans.co.uk/mobilovan](http://mbvans.co.uk/mobilovan) ^^ Available on single vehicle policies only and applicable on Vehicles up to 3.5t only. For full terms and conditions, please consult your local Dealer. Mercedes-Benz Van Insurance is a trading name of Mercedes-Benz Insurance Services UK Limited. Prices are correct at time of going to press 07/2021. All prices are subject to any fiscal or legislative changes.



Approved  
Used  
Electric



## What is an Approved Used van?

- Is no older than 6 years old
- Has less than 150,000 miles on the clock
- Is eligible for one of our flexible finance plans

➤ [Find more information and our latest Approved Used Electric offers](#)

## What is an Approved Used Electric van?

➤ [Visit our Dealer Networks Approved Used Electric van stock](#)

The Mercedes-Benz eSprinter

19

