



The Mercedes-Benz Citan.

Panel van models.

Prices effective from January 2023.

Mercedes-Benz





RETURN TO START

Contents

> Model overview	3
> Trims	
Citan PROGRESSIVE	4
Citan PREMIUM	5
> The new eCitan	6
> Colours and Upholstery	7
> Equipment	8
> Engine and gearbox	13
> Fuel consumption	14
> Weights and payloads	14
> Dimensions	15
> List prices	16
> Approved Used	17
> Aftercare	18

Please note

This document provides information about the model range line-up and specifications of the Citan. It also contains key details about options, economy and performance of all variants. Details are correct at time of publication and are subject to revision. Any images used in this document may not reflect UK specification and are for illustrative purposes only. Images may show optional equipment which does not form part of UK standard specification.

The Mercedes-Benz Citan.



RETURN TO START

2 van models:



Panel Van – 2 seats



Crew Van – NEW for 2023

2 lengths:



L1



L2 - Coming in 2023

2 trims:



PROGRESSIVE



PREMIUM

2 variants:



Diesel



Electric



[▶ The eCitan](#)

The Citan PROGRESSIVE.

Standard features include:

Interior

- 6 airbags for driver and passenger
- Air-conditioning system
- Armrest with stowage compartment
- Automatic co-driver airbag deactivation
- ECO start/stop function
- Heat-insulating glass all round
- Height and rake adjustable steering wheel
- Interior lighting in LED technology
- Multifunction steering wheel
- Smartphone integration package
- Thorax-sidebags and windowbags
- Upholstery in Caluma black fabric

Exterior

- Exterior mirrors heated and electrically adjustable
- Door handles painted in vehicle colour
- Front side windows, electric with one-touch operation
- Rear door, double-wing, 180 degrees, without window
- 16-inch 5-twin-spoke design wheels

Safety, security and connectivity

- Active Brake ASSIST
- Alarm
- ATTENTION ASSIST
- Breakdown Assistance Button
- Cruise control/Speed limiter
- Double Lock
- Hill-Start ASSIST
- MBUX multimedia system with DAB
- Rear Parking Package, including:
 - Rear parking aid
 - Reversing camera

From £21,310* List price exc VAT

* Based on a Citan 110 PROGRESSIVE L1.

2 lengths available

- L1
- L2 - available March 2023

Transmissions available

- 6-speed (manual)
- Optional 7-speed automatic

[▶ Arrange a test drive at your nearest Dealership](#)



The Mercedes-Benz Citan 4

Citan PROGRESSIVE

Citan PREMIUM

Equipment

Engine & gearbox

Fuel consumption

Weights and payloads

Dimensions

List prices

Approved Used

Aftercare

The Citan PREMIUM.

Additional features included with the PREMIUM:

- Body-coloured bumper
- Chrome interior appointments
- Dynamic exterior package, including:
 - 10-spoke light-alloy wheels
 - Metallic paint
- Gloss black dashboard trim
- Highbeam Assist
- LED Headlights and fog lights
- Light package, including:
 - LED High performance headlamps
 - Highbeam Assist
 - Front foglamps

Standard features include:

Interior

- 6 airbags for driver and passenger
- Air-conditioning system
- Armrest with stowage compartment
- Automatic co-driver airbag deactivation
- ECO start/stop function
- Heat-insulating glass all round
- Height and rake adjustable steering wheel
- Interior lighting in LED technology
- Multifunction steering wheel
- Smartphone integration package
- Thorax-sidebags and windowbags
- Upholstery in Caluma black fabric

Exterior

- Door handles painted in vehicle colour
- Exterior mirrors heated and electrically adjustable
- Front side windows, electric with one-touch operation
- Rear door, double-wing, 180 degrees, without window

Safety, security and connectivity

- Active Brake ASSIST
- Alarm
- ATTENTION ASSIST
- Breakdown Assistance Button
- Cruise control/Speed limiter
- Double Lock
- Hill-Start ASSIST
- MBUX multimedia system with DAB
- Rear Parking Package, including:
 - Rear parking aid
 - Reversing camera

From £23,285* List price exc VAT

* Based on a Citan 110 PREMIUM L1.

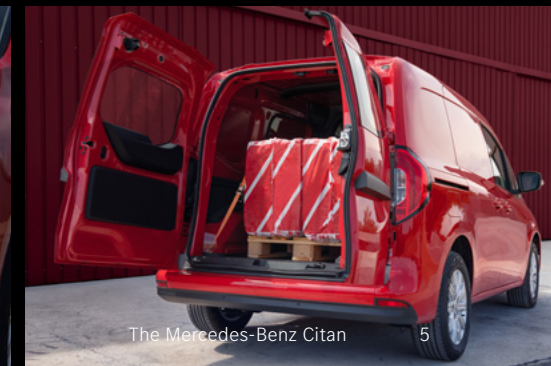
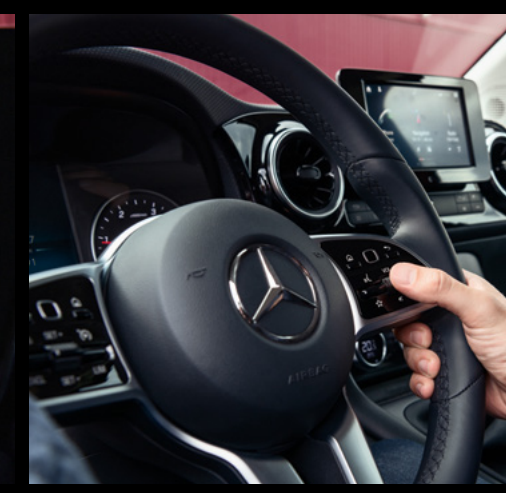
2 lengths available

- L1
- L2 - available March 2023

Transmissions available

- 6-speed (manual)
- Optional 7-speed automatic

➤ [Arrange a test drive at your nearest Dealership](#)



The Mercedes-Benz Citan 5

Citan PROGRESSIVE	Citan PREMIUM	Equipment	Engine & gearbox	Fuel consumption	Weights and payloads	Dimensions	List prices	Approved Used	Aftercare
-------------------	---------------	-----------	------------------	------------------	----------------------	------------	-------------	---------------	-----------

The new eCitan.



RETURN TO START

2 vehicle models:	Panel van with 2 seats	NEW Crew van – available 2023
1 charging configuration:	AC: 22kW with DC: 80kW**	
2 vehicle lengths:	L1 and L2	
2 trim levels:	PROGRESSIVE or PREMIUM	

All-electric WLTP combined range, full charge
Expected to be 176 miles*

80% charge top-up in just
35 minutes

Class-leading
Safety and Connectivity



[Click here for more information on the eCitan range.](#)

Electrical WLTP range for the eCitan 66kWh panel van range in miles (km): 176 (283). **Electrical consumption in kWh/100 km: 25.7 – 25.9. Combined CO₂ emissions in g/km: 0.**

* Technical data of the eCitan in this publication are preliminary values and were determined internally in accordance with the WLTP certification methods. There are currently no confirmed values from TÜV, nor is there an EC type approval or a certificate of conformity with official values. Deviations between this data and the official values are possible. UK range figures may vary and these will be published when available.

The Mercedes-Benz Citan

6

Colours and upholstery.



RETURN TO START

Solid Paints – standard on Progressive



Arctic white



Lorándite red



Nosean blue



Magnetite grey

Metallic Paints – standard on Premium



Helvite silver metallic



Limonite yellow metallic

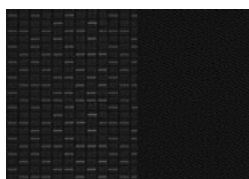


Chromite grey metallic



Dravite black metallic

Interior upholstery



Black Caluma seat upholstery

➤ For paint pricing, see page 9

Model shown may not be UK specification

Equipment (standard and optional overview).



RETURN TO START

Every Citan model comes with a host of standard features, plus a range of optional equipment and packages you can add to enhance your van.

Key: ● Standard ○ Optional ◇ Equipment dependant option available — Not available

Equipment	Description	Option code	PROGRESSIVE	PREMIUM	Basic Price exc. VAT	Basic Price inc. VAT
			Panel Van	Panel Van		
Packages						
Driver's Assistance	Smartphone Integration package Smartphone integration connects your mobile phone with the multimedia system via Apple CarPlay® or Android Auto®.	E4S	●	●	-	-
	Mercedes me connect	EC5	●	●	-	-
	Wireless charging system for mobile devices	E10	○	○	£175.00	£210.00
	Mercedes-Benz emergency call system	EY5	●	●	-	-
Parking	Rear Parking Package The Rear Parking Package features ultrasound rear sensors and reversing camera, which displays in the MBUX head unit. Includes: - Rear parking aid (F2U) - Reversing camera (FR8)	EX5	●	●	-	-
Trim	Chrome interior appointments package Visually enhances the driver and co-driver areas with attractive chrome trim.	FP4	—	●	-	-
	Interior Design package The Interior Design package includes chrome applications on air vents, door handles and loudspeakers integrated in the doors. Complimented with a high-gloss black instrument panel trim (FI9)	PX9	—	●	-	-
Lighting	Light Package - LED High Performance headlamps (LG7) - Highbeam Assist (LA1) - Front LED foglamps (L23)	LB6	—	●	-	-
Exterior	Dynamic Exterior Package The Dynamic Exterior Package includes: - 16-inch 10-spoke light-alloy wheels (R2C) - Metallic paint finish	Z9D	—	●	-	-

Changes to individual option availability and combinations may occur depending on vehicle specification choices and the continuing evolution and adaptation of our product range. These changes may not be immediately reflected in this document as they occur, but will be introduced at the next revision opportunity.

Equipment (standard and optional overview).


[RETURN TO START](#)

Equipment	Description	Option code	PROGRESSIVE Panel Van	PREMIUM Panel Van	Basic Price exc. VAT	Basic Price inc. VAT
Exterior Features						
Paint	Metallic paint	—	—	●	—	—
	Door handles painted in vehicle colour	T06	●	●	—	—
	Painted bumper	CM0	—	●	—	—
Wheels	16-inch 10-spoke light-alloy wheels	R2C	—	●	—	—
	16-inch 5-twin-spoke design wheels	R2F	●	—	—	—
	Spare wheel	R87	○	○	£95.00	£114.00
Tyres	Tyres without name of make	RD9	●	●	—	—
	Summer tyres	RM7	●	●	—	—
	TIREFIT	RR7	○	○	£45.00	£54.00
	Tyre pressure monitoring front/rear, wireless	RY2	○	○	£145.00	£174.00
Fuel Tanks	Particulate trap	KA1	●	●	—	—
	Fuel filter with water separator	KL5	●	●	—	—
Mud flaps	Rear mud flaps	P48	○	○	£40.00	£48.00
Interior Features						
Gearbox	7-speed automatic transmission Includes KEYLESS-GO starting function (FX7) and 2250kg GVW (X2U)	G7A	○	○	£1,825.00	£2,190.00
	6-speed manual transmission	GK6	●	●	—	—
Seating	Co-driver's seat, height-adjustable	SL2	●	●	—	—
	Driver's seat, height-adjustable	SL3	●	●	—	—
	Fabric Caluma black	VF4	●	●	—	—
Steering wheel	Multifunction steering wheel	C6L	●	●	—	—
	Steering wheel heating	CK8	○	○	£140.00	£168.00
	Height and rake adjustable steering wheel	CL1	●	●	—	—
	Leather steering wheel Includes leather gear knob (C1J)	CL3	○	○	£205.00	£246.00
Storage	Armrest with stowage compartment	FG1	●	●	—	—
	Glove compartment, co-driver's side, closed	FQ3	●	●	—	—

● Standard ○ Optional — Not available

Equipment (standard and optional overview).


[RETURN TO START](#)

Equipment	Description	Option code	PROGRESSIVE Panel Van	PREMIUM Panel Van	Basic Price exc. VAT	Basic Price inc. VAT
Interior Features (cont.)						
Mats	All-weather floor mats	V3L	○	○	£35.00	£42.00
	Plastic flooring in passenger compartment, front	V4V	●	●	-	-
Trim	High-gloss black dashboard trim element	FI9	—	●	-	-
	Centre armrest and door ctr. panels in black grain	VG0	●	●	-	-
Heating and Ventilation	Air-conditioning system	H06	●	●	-	-
Technology, Software & Electrics						
Audio Entertainment	Digital radio (DAB)	E1D	●	●	-	-
	MBUX multimedia system	E2X	●	●	-	-
	Communication module (LTE) for digital services	JH3	●	●	-	-
	Instrument cluster with pixel-matrix display	JK3	●	●	-	-
	Instrument cluster with colour display	JK5	○	○	£210.00	£252.00
Alternator	Reinforced alternator	MA8	○	○	£345.00	£414.00
Driver's Assistance & Safety						
Brake	Electrical parking brake	B25	○	○	£220.00	£264.00
	Parking brake	B26	●	●	-	-
	Active Brake ASSIST	BA3	●	●	-	-
	Brake system with ABS and ASR	BB0	●	●	-	-
	Electronic Stability Program (ESP) Can assist the driver should the vehicle enter into an unstable driving condition.	BB3	●	●	-	-
Driver's Assistance	Hill-Start ASSIST	E07	●	●	-	-
	Rear parking aid	F2U	●	●	-	-
	KEYLESS-GO starting function	FX7	○	○	£85.00	£102.00
	Light and rain sensor	JA5	●	●	-	-
	Blind Spot ASSIST	JA7	○	○	£390.00	£468.00
	Active Lane Keeping ASSIST	JB4	○	○	£390.00	£468.00

● Standard ○ Optional — Not available

Equipment (standard and optional overview).



RETURN TO START

Equipment	Description	Option code	PROGRESSIVE Panel Van	PREMIUM Panel Van	Basic Price exc. VAT	Basic Price inc. VAT
Driver's Assistance & Safety (cont.)						
Driver's Assistance (cont.)	ATTENTION ASSIST	JW8	●	●	-	-
	Speed Limit ASSIST	MA2	○	○	£255.00	£306.00
	Cruise control	MS1	●	●	-	-
	ECO start/stop function	MJ8	●	●	-	-
	Reversing camera	FR8	●	●	-	-
Airbags	Airbag, driver and co-driver	SA4	●	●	-	-
	Thorax-sidebags and windowbags, front	SH5	●	●	-	-
	Automatic co-driver airbag deactivation	SK5	●	●	-	-
Safety	Speedometer, mph and km/h	J11	●	●	-	-
	Seat belt warning for driver and co-driver seats	J56	●	●	-	-
	First aid kit	Y10	○	○	£20.00	£24.00
	Fire extinguisher	Y16	○	○	£105.00	£126.00
	Warning triangle	Y44	○	○	£20.00	£24.00
	Breakdown management	EY6	●	●	-	-
Security	Double Lock	FY2	●	●	-	-
	Alarm - NOT Thatcham Approved	FZ5	●	●	-	-
Lighting						
Lighting	Headlamps featuring halogen technology	L12	●	●	-	-
	Front fog lamps	L16	○	●	£145.00	£174.00
	Highbeam Assist	LA1	○	●	£155.00	£186.00
	Load compartment lighting in LED technology	LE2	●	●	-	-
	LED High Performance headlamps	LG7	—	●	-	-
	Interior lighting in LED technology	LL1	●	●	-	-

● Standard ○ Optional — Not available

Equipment (standard and optional overview).



RETURN TO START

Equipment	Description	Option code	PROGRESSIVE Panel Van	PREMIUM Panel Van	Basic Price exc. VAT	Basic Price inc. VAT
Loading and Towing						
Towing Equipment	Trailer coupling, rigid coupling head	Q22	○	○	£495.00	£594.00
Bulkhead	Full-length partition	D50	●	●	-	-
Loading Doors	Sliding door right	T16	○	○	£295.00	£354.00
	Sliding door left	T19	●	●	-	-
	Sliding door rail cover in vehicle colour	T78	●	●	-	-
	Plastic flooring in boot/load compartment	V29	●	●	-	-
	Rear door, double-wing, 180 degrees	W50	●	●	-	-
	Side wall, rear, without windows	I03	●	●	-	-
Weight variant	2230 kg	X0X	●	●	-	-
	2250 kg (only in conjunction with 7-speed automatic transmission)	X2U	○	○	-	-
Mirrors & Windows						
Mirrors	Exterior mirrors, electric folding	F59	○	○	£130.00	£156.00
	Exterior mirror heated and electric adjustable	F68	●	●	-	-
Windows	Heat-insulating glass all round	H20	●	●	-	-
	Front side windows, electric with one-touch operation	FE3	●	●	-	-

● Standard ○ Optional — Not available

Engine and gearbox.



RETURN TO START

	PROGRESSIVE	PREMIUM
Engine specifications	110	110
Fuel	Diesel	Diesel
Mixture preparation/injection method	Common-rail high-pressure fuel injection	Common-rail high-pressure fuel injection
Cylinder arrangement	4-cylinder	4-cylinder
Cubic capacity	1,461cc	1,461cc
EU exhaust emission standard	Euro 6d	Euro 6d
Output, max.	95hp	95hp
Torque, max.	260Nm @ 1750rpm	260Nm @ 1750rpm
Fuel tank capacity	54 litres	54 litres
AdBlue® capacity	17.4 litres	17.4 litres
6-speed manual gearbox	●	●
7-speed automatic gearbox	○	○
Driven Axle	FWD	FWD

● Standard ○ Optional — Not available

Fuel consumption, performance and CO₂ emissions.



RETURN TO START

WLTP Fuel Consumption (l/100km/MPG)

Model	CO ₂ emissions (g/km)	Combined	Low-speed	Medium-speed	High-speed	Extra high-speed
Panel Van - PROGRESSIVE						
110 Van L1	137	5.2/ 54.3	5.8/ 48.7	5/ 56.5	4.5/ 62.8	5.8/ 48.7
110 Van L2	Coming soon					
Panel Van - PREMIUM						
110 Van L1	137	5.2/ 54.3	5.8/ 48.7	5/ 56.5	4.5/ 62.8	5.8/ 48.7
110 Van L2	Coming soon					

CO₂ emissions (l/100km)

Model	Combined	Low-speed	Medium-speed	High-speed	Extra high-speed
Panel Van - PROGRESSIVE					
110 Van L1	137	153	130	117	151
110 Van L2	Coming soon				
Panel Van - PREMIUM					
110 Van L1	137	153	130	117	151
110 Van L2	Coming soon				

All figures are based on a standard specification. The choice of additional factory options may affect CO₂ emissions and corresponding Road Fund Licence. The indicated values were determined according to the prescribed measurement method - Worldwide Harmonised Light Vehicle Test Procedure (WLTP). Figures shown may include options which are not available in the UK. Figures shown are for comparability purposes; only compare with other vans tested to the same technical procedures. Figures may not reflect real life driving results, which will depend upon a number of factors including factory-fitted options, accessories fitted (post registration), variations in weather, driving styles and vehicle load.

Further information about the test used to establish fuel consumption and CO₂ figures can be found at <https://www.mercedes-benz.co.uk/vans/en/WLTP>

Weights and payloads.

Model	Unladen Weight (Kg)	Gross Vehicle Weight (Kg)	Payload (Kg)	Gross Train Weight (Kg)
Panel Van - PROGRESSIVE				
110 Van L1	1,563	2,230	667	3,500
110 Van L2	Coming soon			
Panel Van - PREMIUM				
110 Van L1	1,564	2,230	666	3,500
110 Van L2	Coming soon			

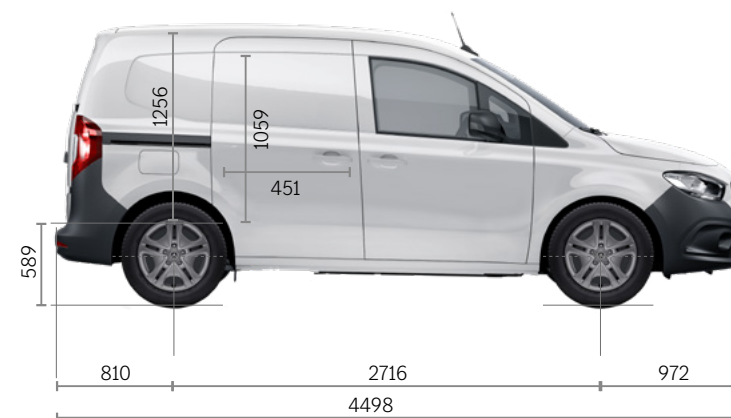
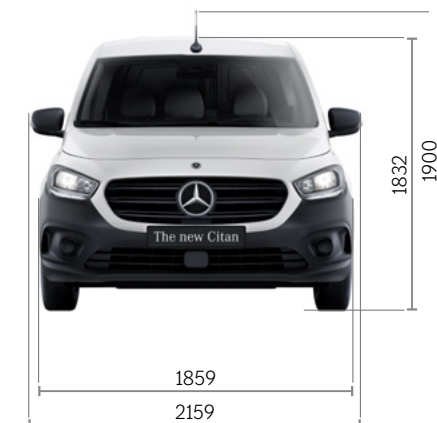
Please note: The stated payload weights are correct according to type approval data. The specific payload values for UK supplied vehicles may differ. The figure quoted only accounts for equipment which is included in the UK product offer as standard. Please speak to a franchised Mercedes-Benz Van Dealer for final vehicle configurations and weights once all options and accessories have been added.

Dimensions.



RETURN TO START

PANEL VAN – PROGRESSIVE/ PREMIUM L1		
Wheelbase	Wheelbase length	2,716mm
	Turning circle	11.2m
	Front track width	1,585mm
	Rear track width	1,606mm
Vehicle	Length	4,498mm
	Height (unladen)	1,832mm
	Width (inc. wing mirrors)	2,159mm
	Ground clearance	176mm
Load compartment	Length	1,806mm
	Load volume	TBC
	Max. width	1,524mm
	Width between wheel arches	1,248mm
	Height	1,256mm
	Rear loading height (step height from ground to load floor)	589mm



PANEL VAN – L2

Dimensions coming soon

List prices.



RETURN TO START

Model	Transmission	Basic Recommended Retail Price (Ex. VAT)	Basic Recommended Retail Price (Inc. VAT)
Panel Van – PROGRESSIVE			
110 Van L1	6-speed (manual)	£21,310	£25,572
110 Van L2 COMING SOON	6-speed (manual)	£22,635	£27,162
Panel Van – PREMIUM			
110 Van L1	6-speed (manual)	£23,285	£27,942
110 Van L2 COMING SOON	6-speed (manual)	£24,610	£29,532
Electric Panel Van – PROGRESSIVE			
Electric Van L1 COMING SOON	Automatic	£33,225	£39,870
Electric Van L2 COMING SOON	Automatic	£34,395	£41,274
Electric Panel Van – PREMIUM			
Electric Van L1 COMING SOON	Automatic	£35,200	£42,240
Electric Van L2 COMING SOON	Automatic	£36,370	£43,644

This document is for guidance only and must be used in conjunction with a configuration tool prior to final specification decisions and vehicle quotations being prepared and accepted. List prices are quoted ex-factory unless otherwise stated. Delivery charges excluding VAT will be added to model prices quoted in this document. Prices based on standard finish paint choice. Mercedes-Benz Vans UK and authorised Dealers reserve the right to alter specification and vary prices without notice. The availability of options may depend on the chosen base vehicle and other optional equipment specified, and should be confirmed with your Mercedes-Benz Vans Dealer prior to order placement. VAT is calculated at the standard rate of 20%. Mercedes-Benz Vans UK Ltd, Tongwell, Milton Keynes MK15 8BA.

Mercedes-Benz Approved Used vans.

Get used to more...



RETURN TO START

More choice. More confidence. More quality – and more added extras.

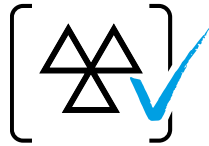
As a Mercedes-Benz Approved Used customer, you'll have complete peace of mind as every van offers the same commitment to quality and workmanship as new and comes with:



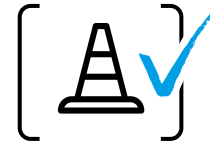
Minimum 12-month warranty*
PLUS the option of monthly top-ups, up to 24 months*



Free MOT test failure cover**
covering you for £1,500



Minimum 3 months MOT



Free 24/7 breakdown cover and roadside assistance^



Free 7-day driveaway van insurance^^



Comprehensive multi-point vehicle check



Discounted service plans

▶ [View our Dealer Networks Approved Used van stock](#)

*Warranty eligible up to 200,000 miles on approved used Mercedes-Benz Vans with less than 150,000 miles at point of sale. Top ups are to a maximum of 24 months. For full T&Cs, please speak to your preferred sales representative. ** MOT cover redeemable per 12-months warranty. £1,500 claims limit. For more information, please speak to your preferred sales representative. ^ Free for 12 months initially and renewed at each service, if serviced by MB according to service intervals for up to 30 years from when the vehicle was first registered. For a full list of exclusions and all product terms please visit mbvans.co.uk/mobilovan ^^ Available on single vehicle policies only and applicable on Vehicles up to 3.5t only. For full terms and conditions, please consult your local Dealer. Mercedes-Benz Van Insurance is a trading name of Mercedes-Benz Insurance Services UK Limited. Prices are correct at time of going to press 07/2021. All prices are subject to any fiscal or legislative changes.



Approved
Used



What is an Approved Used van?

- Is no older than 6 years old
- Is eligible for one of our flexible finance plans
- Has less than 150,000 miles on the clock

▶ [Find more information and our latest Approved Used offers](#)

Ready to go electric?

▶ [Find our latest Approved Used Electric offers](#)

The Mercedes-Benz Citan

17

Service24: Demand more

The most comprehensive Aftercare package – for businesses that demand more.

Our 120-strong Dealer network works around the clock to service and maintain your vans and keep your business moving. It all adds up to more value, more flexibility and more confidence that you'll only find at an authorised Mercedes-Benz Dealer.



› Flexible servicing and maintenance

Book your service online or by telephone, and as well as a standard 'drop and go' service with a courtesy van, you'll also get:

- Early bird, late night and weekend slots
- Mobile service
- Overnight service
- Collect & deliver service
- Express 1hr service
- Electric van service.

[Find out more about service and repairs](#)



› Flexible ways to pay and save

With fixed, transparent national pricing there are no surprises with our services and repairs – plus you can fix, spread and reduce your service and maintenance costs, and ease your cashflow at the same time, with a payment plan.

- Pay as You Go
- ServiceCare Maintenance
- ServiceCare Flex (specifically for fleets)
- ServiceCare Complete.

[Find out more about service options](#)



› 3-year unlimited mileage warranty

Available on every new van, all service and maintenance – and any work required – is covered by your 3-year unlimited mileage warranty, and is only undertaken by Mercedes-Benz trained technicians using Mercedes-Benz GenuineParts.

[Find out more about warranties](#)



› Free breakdown cover & roadside assistance*

Every van comes with free Europe-wide breakdown cover – MobiloVan. And with 3 years' cover on new vehicles for driver mishaps, no one goes further to keep your business moving.

- Trained technicians using only Mercedes-Benz GenuineParts
- Forward travel of load and crew is covered
- Driver mishap cover for the first 3 years, including out of charge cover or empty fuel tanks.

[Find out more about MobiloVan](#)

*For a full list of exclusions and all product terms please visit www.mercedes-benz.co.uk/vans/en/Owners/MobiloVan

The Mercedes-Benz Citan

18

