



The new SEAT Ibiza.

Pricing and specification list.



Contents.

03

Why easymove?

04

Pick your trim.

11

Pick your engine.

21

Option prices.

14

Pick your colour.

22

**Vehicle
excise duty.**

22

**Benefit in
kind tax.**

15

Equipment.

23

Technical data.

27

**Warranties &
service plans.**

Why **easy**move?

We've made it really simple to pick the SEAT Ibiza that's right for you. There are six individual trims, each with their own unique equipment and appeal.

1 Pick the trim that sounds like your kind of car.

2 Choose the engine that suits you.

3 Personalise your Ibiza with your favourite colour.

And that's it. It couldn't be easier to do your thing.



1. Pick your trim.



01. **SE.** The Essential One.

02. **SE Technology.** The Connected One.

03. **FR.** The Stylish One.

04. **FR Sport.** The Sporty One.

05. **XCELLENCE.** The Indulgent One.

06. **XCELLENCE Lux.** The Luxury One.

Ibiza SE.

The Essential One.

From £16,495*

Get things really moving with essential kit such as a 8.25" touchscreen multimedia system and Full Link technology to ensure maximum connectivity with your smartphone's features and navigation on the move. Plus, air conditioning will help you stay comfortable on every journey.

Key specifications for the SE trim

Wheels and tyres

- 15" 'Enjoy' alloy wheels in Brilliant Silver

Exterior equipment

- Electrically adjustable door mirrors
- ECO LED automatic headlights and LED daytime running lights
- Halogen tail lights
- Metallic paint

Infotainment

- Bluetooth® audio streaming and handsfree system
- DAB (Digital Audio Broadcasting)
- Full Link smartphone integration (Mirror Link, Wireless Apple CarPlay, Google Android Auto)
- 8.25" colour touchscreen
- SEAT Connect: Safety, Service and Remote Access

Interior equipment

- Front reading lights
- Dimming rear view mirror

Seats and trim

- SE interior styling: Chrome interior detailing and grey headlining
- Height-adjustable front seats
- Leather steering wheel, gear knob & handbrake
- Honey Mustard coloured interior air vents

Functional and mechanical

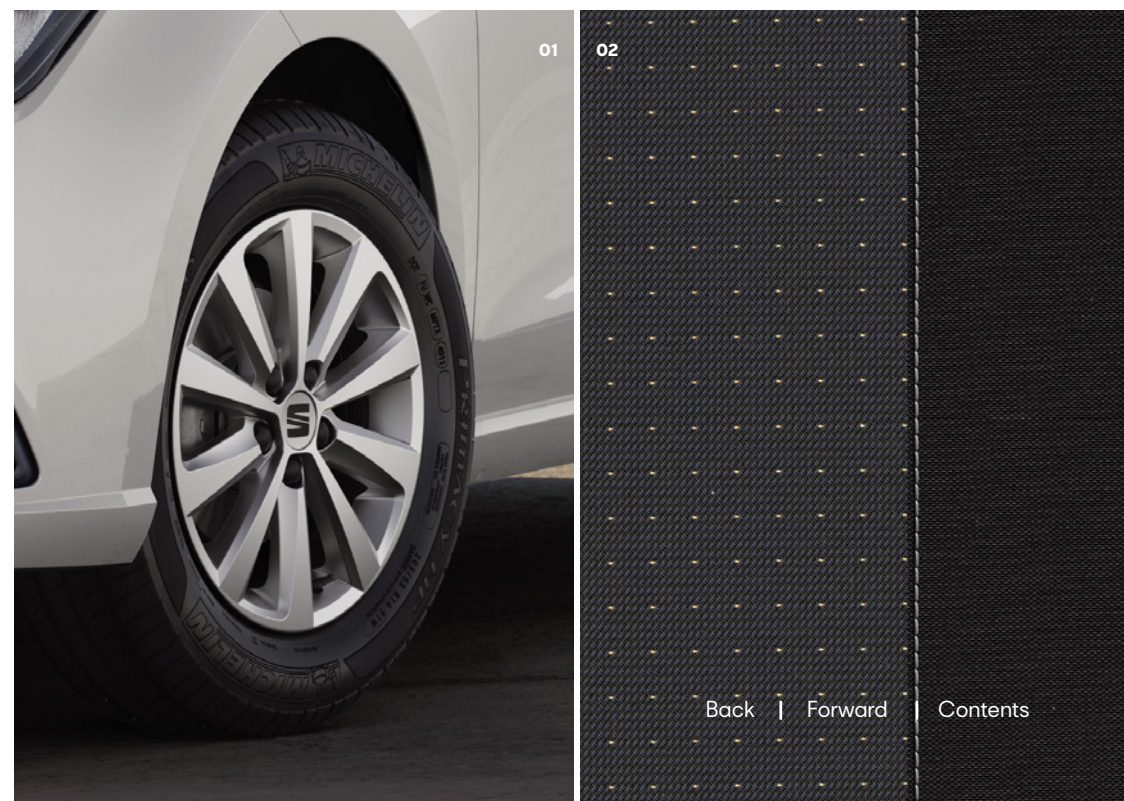
- Air conditioning
- Auto-headlights
- Electric front windows
- Leather multifunction flat-bottomed sports steering wheel

Safety and security

- Cruise control
- Lane Assist
- Speed limiter
- Anti-lock brake system (ABS) and Electronic Stability Control (ESC)
- Driver and front passenger airbags with front passenger airbag de-activation, front side and curtain airbags
- Emergency Brake Assist (EBA) and Front Assist
- Hill hold control
- ISOFIX
- Tiredness recognition system
- Tyre pressure monitoring



Model shown: Ibiza SE in White non-metallic paint.



01

02

01. 15" 'Enjoy' alloy wheels.

02. Black cloth.

*Price is for Ibiza SE 1.0 MPI 80PS.

The SEAT Connect services can be operated only by using available public communication technologies. Please note that due to development of these technologies, especially mobile networks, SEAT cannot guarantee consistent availability in all countries for the duration of SEAT Connect services. Possible changes in technology may cause permanent unavailability of them.

5 The SEAT Ibiza. Pricing and specification list.

[Back](#) | [Forward](#) | [Contents](#)

Ibiza SE Technology.

The Connected One.

From £17,425*

Stay connected to your tunes, your calls, and to the route ahead with the intuitive media system, featuring an easy-on-the-eye 9.2" Navigation system. Plus, clever Full Link technology ensures maximum connectivity to your phone's features, so you can stay in touch and keep on moving without distraction.

In addition to the SE trim

Wheels and tyres

- 16" 'Design' machined alloy wheels in Nuclear Grey

Infotainment

- Navigation system
 - 9.2" colour touchscreen with proximity sensor
 - 3D map display
 - Voice control
 - Additional USB port
- SEAT Connect: Safety, Service, Remote & Online Infotainment
 - SD Card Map updates for 1 year

01. 16" 'Design' alloy wheels.

02. Black cloth.

*Price is for Ibiza SE Technology 1.0 MPI 80PS.

The SEAT Connect services can be operated only by using available public communication technologies. Please note that due to development of these technologies, especially mobile networks, SEAT cannot guarantee consistent availability in all countries for the duration of SEAT Connect services. Possible changes in technology may cause permanent unavailability of them.



Model shown: Ibiza SE Technology in White non-metallic paint.



Ibiza FR.

The Stylish One.

From £18,755*

Sharp styling inside and out, with FR sports seats and 17" alloys, while cruise control helps you keep moving safely with ease. Full LED headlights light the way for a dynamic, sporty drive and with SEAT drive profile¹ as standard, you're always in control.

In addition to the SE Technology trim

Wheels and tyres

- 17" alloy wheels in Brilliant Silver

Exterior equipment

- Dark tinted rear windows
- Electrically adjustable, folding and heated door mirrors
- Exclusive FR rear bumpers
- LED headlights with dynamic headlight range control, coming and leaving home feature and LED daytime running lights
- LED tail lights
- Rear spoiler and simulated twin exhausts

Interior equipment

- Interior ambient lighting

Seats and trim

- FR interior styling: Chrome detailing, black headlining
- Leather steering wheel (flat-bottomed, perforated with red stitching and FR logo) and leather gear knob & handbrake
- Illuminated, red air vent surrounds

Functional and mechanical

- Dual-zone climate control with combination filter
- Auto-dimming rear view mirror
- Rain-sensing wipers
- SEAT drive profile¹
 - Four different modes (Normal-Sport-Eco-Individual)
 - Steering response
 - Throttle response
 - Gear shifts mode (only DSG models)
- Steering wheel-mounted gearshift paddles (DSG models only)
- Sports suspension
- Safety and security**
- Alarm

*Price is for Ibiza FR 1.0 MPI 80PS.

¹ Not available on MPI engines

01. 17" alloy wheels in Brilliant Silver.

02. Navy and Black FR cloth.



Model shown: Ibiza FR in Desire Red metallic paint and optional panoramic sunroof.



Ibiza FR Sport.

The Sporty One.

From £19,610*

Designed to really get you moving, the FR Sport comes equipped with 18" 'Performance' alloy wheels, sports suspension, sleek black Microsuede upholstery and a driver-focused digital cockpit so you're able to keep tabs on your drive at a glance.

In addition to the FR trim

Wheels and tyres

- 18" 'Performance' machined alloy wheels in black and grey

Infotainment

- Digital cockpit

Seats and trim

- Comfort seats in Microsuede upholstery

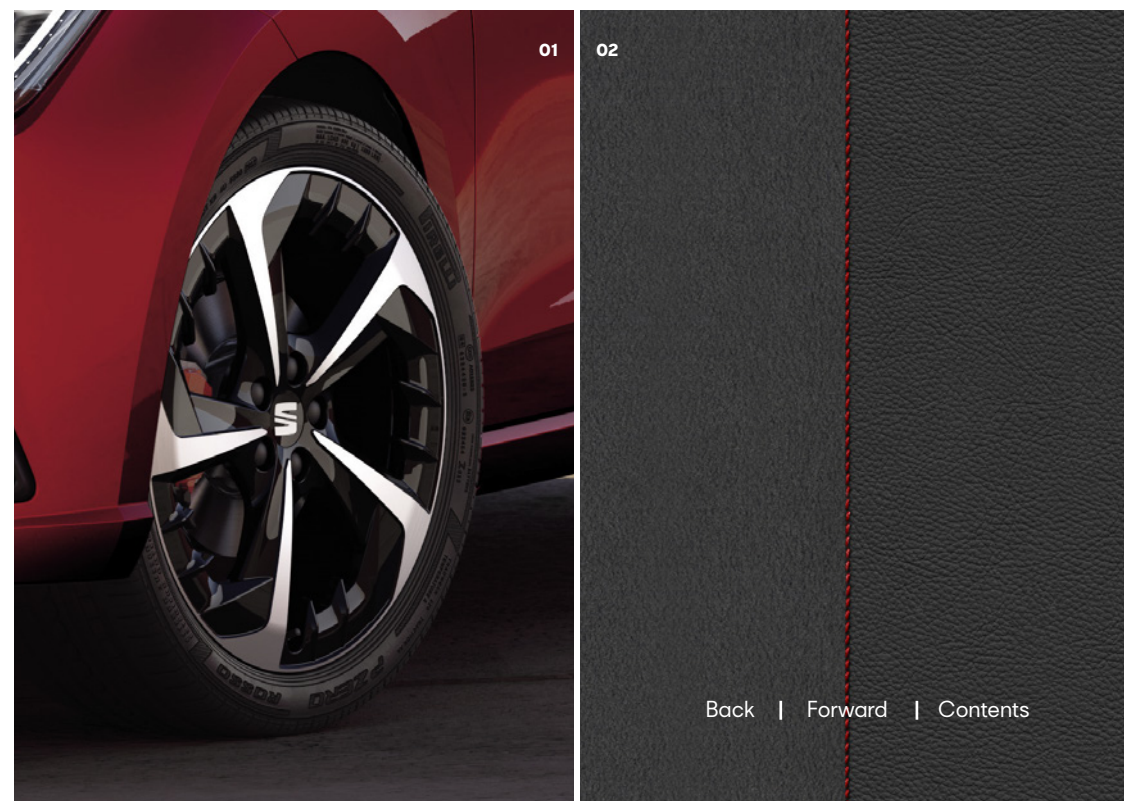
01. 18" 'Performance' machined alloy wheels in black and grey.

02. Black Microsuede.

*Price is for Ibiza FR Sport 1.0 MPI 80PS.



Model shown: Ibiza FR Sport in Desire Red metallic paint and optional panoramic sunroof.



Ibiza XCELLENCE.

The Indulgent One.

From £19,500*

With dual-zone climate control, and features like rain sensing wipers and auto headlights, every journey becomes one of ease and indulgence. Not forgetting helpful tech such as KESSY (Keyless entry & go) so you can start moving without looking for your keys.

In addition to the SE Technology trim

Wheels and tyres

- 17" 'Dynamic' machined alloy wheels in Nuclear Grey

Exterior equipment

- Dark tinted rear windows
- Electrically adjustable, folding and heated door mirrors
- LED headlights with dynamic headlight range control, coming and leaving home feature and LED daytime running lights
- LED tail lights

Interior equipment

- Interior ambient lighting

Seats and trim

- XCELLENCE interior styling: Chrome detailing and black headlining
- Front centre armrest
- Microsuede upholstery
- Illuminated Burgundy air vent surrounds

Functional and mechanical

- Auto-dimming rear view mirror
- Dual-zone climate control
- Electric rear windows
- KESSY (Keyless entry & go)
- Parking sensors (rear)
- Rain-sensing wipers

Safety and security

- Alarm

01. 17" 'Dynamic' machined alloy wheels in Nuclear Grey.

02. Black Microsuede.

*Price is for Ibiza XCELLENCE 1.0 TSI 95PS.



Model shown: Ibiza XCELLENCE in Sapphire Blue metallic paint.



Ibiza XCELLENCE Lux.

The Luxury One.

From £20,350*

All the indulgence of the XCELLENCE model, but with added luxuries to get you moving in the best possible style – including a driver-focused digital cockpit, rear view camera and stylish Microsuede upholstery, plus your choice of Eco, Normal or Sport driving profiles.

In addition to the XCELLENCE trim

Infotainment

- Digital cockpit

Functional and mechanical

- Adaptive Cruise Control [ACC]
- Parking sensors (front)
- Rear view camera with front and rear parking sensors
- SEAT drive profile
 - Four different modes (Normal-Sport-Eco-Individual)
 - Steering response
 - Throttle response
 - Gear shifts mode (only DSG models)

01. 17" 'Dynamic' machined alloy wheels in Nuclear Grey.

02. Black Microsuede.

*Price is for Ibiza XCELLENCE Lux 1.0 TSI 95PS.

10 The SEAT Ibiza. Pricing and specification list.



Model shown: Ibiza XCELLENCE Lux in Sapphire Blue metallic paint.



[Back](#) | [Forward](#) | [Contents](#)

2. Pick your engine.

- Coming autumn 2021

	Derivative	Fuel	WLTP CO ₂ g/km	WLTP Combined mpg	Insurance group (1-50)	BIK 2021/22*	Basic price	VAT @ 20%	Retail price (P11D value)	1st Year RFL Rate 2021/22	1st reg fee 2021/22	Recommended On The Road Price
SE	1.0 MPI 80PS	P	121	48.7-53.3	TBC	28%	£13,550.00	£2,710.00	£16,260.00	£180.00	£55.00	£16,495.00
	1.0 TSI 95PS	P	118	47.9-54.3	TBC	27%	£13,925.00	£2,785.00	£16,710.00	£180.00	£55.00	£16,945.00
SE Technology	1.0 MPI 80PS	P	121	48.7-53.3	TBC	28%	£14,325.00	£2,865.00	£17,190.00	£180.00	£55.00	£17,425.00
	1.0 TSI 95PS	P	118	47.9-54.3	TBC	27%	£14,700.00	£2,940.00	£17,640.00	£180.00	£55.00	£17,875.00

Some derivatives only available from stock.

*BIK value is based on WLTP CO₂'s and applicable from 06/04/2021.

The Recommended 'On The Road' price includes delivery charge to Retailer and number plates, one year's Road Fund Licence at the 1st year rate (£0 - £2,245 depending on the CO₂ output of the vehicle), and the new vehicle registration fee (£55). VAT is calculated at 20.0%. SEAT may change RRP's at any time (this includes where there are government changes in regulation and/or legislation). There may be a delay to any RRP displaying correctly on our materials. Always obtain prices from your chosen SEAT Retailer. Figures shown are for comparability purposes; only compare fuel consumption and CO₂ figures with other vehicles tested to the same technical procedures. These figures may not reflect real life driving results, which will depend upon a number of factors including the accessories fitted (post-registration), variations in weather, driving styles and vehicle load. Data correct at 12/08/2021.

2. Pick your engine.

- Coming autumn 2021

	Derivative	Fuel	WLTP CO ₂ g/km	WLTP Combined mpg	Insurance group (1-50)	BIK 2021/22*	Basic price	VAT @ 20%	Retail price (P11D value)	1st Year RFL Rate 2021/22	1st reg fee 2021/22	Recommended On The Road Price
FR	1.0 MPI 80PS	P	126	48.7-50.4	TBC	29%	£15,433.33	£3,086.67	£18,520.00	£180.00	£55.00	£18,755.00
	1.0 TSI 95PS	P	124	47.9-51.4	TBC	28%	£15,875.00	£3,175.00	£19,050.00	£180.00	£55.00	£19,285.00
	1.0 TSI 110PS	P	123	48.7-52.3	TBC	28%	£16,220.83	£3,244.17	£19,465.00	£180.00	£55.00	£19,700.00
	1.0 TSI DSG-auto 110PS	P	132	44.1-48.7	TBC	30%	£17,120.83	£3,424.17	£20,545.00	£220.00	£55.00	£20,820.00
FR Sport	1.0 MPI 80PS	P	127	48.7-50.4	TBC	29%	£16,145.83	£3,229.17	£19,375.00	£180.00	£55.00	£19,610.00
	1.0 TSI 95PS	P	125	47.9-51.4	TBC	29%	£16,587.50	£3,317.50	£19,905.00	£180.00	£55.00	£20,140.00
	1.0 TSI 110PS	P	123	48.7-52.3	TBC	28%	£16,933.33	£3,386.67	£20,320.00	£180.00	£55.00	£20,555.00
	1.0 TSI DSG-auto 110PS	P	132	44.1-48.7	TBC	30%	£17,833.33	£3,566.67	£21,400.00	£220.00	£55.00	£21,675.00

*BIK value is based on WLTP CO₂'s and applicable from 06/04/2021.

The Recommended 'On The Road' price includes delivery charge to Retailer and number plates, one year's Road Fund Licence at the 1st year rate (£0 - £2,245 depending on the CO₂ output of the vehicle), and the new vehicle registration fee (£55). VAT is calculated at 20.0%. SEAT may change RRP's at any time (this includes where there are government changes in regulation and/or legislation). There may be a delay to any RRP displaying correctly on our materials. Always obtain prices from your chosen SEAT Retailer. Figures shown are for comparability purposes; only compare fuel consumption and CO₂ figures with other vehicles tested to the same technical procedures. These figures may not reflect real life driving results, which will depend upon a number of factors including the accessories fitted (post-registration), variations in weather, driving styles and vehicle load. Data correct at 12/08/2021.

2. Pick your engine.

	Derivative	Fuel	WLTP CO ₂ g/km	WLTP Combined mpg	Insurance group (1-50)	BIK 2021/22*	Basic price	VAT @ 20%	Retail price (P11D value)	1st Year RFL Rate 2021/22	1st reg fee 2021/22	Recommended On The Road Price
XCELLENCE	1.0 TSI 95PS	P	126	47.9-51.4	TBC	29%	£16,054.17	£3,210.83	£19,265.00	£180.00	£55.00	£19,500.00
	1.0 TSI 110PS	P	124	48.7-51.4	TBC	28%	£16,266.67	£3,253.33	£19,520.00	£180.00	£55.00	£19,755.00
	1.0 TSI DSG-auto 110PS	P	133	44.1-47.9	TBC	30%	£17,166.67	£3,433.33	£20,600.00	£220.00	£55.00	£20,875.00
XCELLENCE Lux	1.0 TSI 95PS	P	126	47.9-51.4	TBC	29%	£16,762.50	£3,352.50	£20,115.00	£180.00	£55.00	£20,350.00
	1.0 TSI 110PS	P	124	48.7-51.4	TBC	28%	£16,975.00	£3,395.00	£20,370.00	£180.00	£55.00	£20,605.00
	1.0 TSI DSG-auto 110PS	P	133	44.1-47.9	TBC	30%	£17,875.00	£3,575.00	£21,450.00	£220.00	£55.00	£21,725.00

*BIK value is based on WLTP CO₂'s and applicable from 06/04/2021.

The Recommended 'On The Road' price includes delivery charge to Retailer and number plates, one year's Road Fund Licence at the 1st year rate (£0 - £2,245 depending on the CO₂ output of the vehicle), and the new vehicle registration fee (£55). VAT is calculated at 20.0%. SEAT may change RRP's at any time (this includes where there are government changes in regulation and/or legislation). There may be a delay to any RRP displaying correctly on our materials. Always obtain prices from your chosen SEAT Retailer. Figures shown are for comparability purposes; only compare fuel consumption and CO₂ figures with other vehicles tested to the same technical procedures. These figures may not reflect real life driving results, which will depend upon a number of factors including the accessories fitted (post-registration), variations in weather, driving styles and vehicle load. Data correct at 12/08/2021.

3. Pick your colour.

Print and screen view do not provide an exact representation of colour.
Please refer to the paint colour moulds at your local SEAT Retailer.
Some colours only available from stock.



White¹

SE SE Tech FR FRS XC XCL



Nevada White²

SE SE Tech FR FRS XC XCL



Urban Silver²

SE SE Tech FR FRS XC XCL



Magnetic Tech Grey²

SE SE Tech FR FRS XC XCL



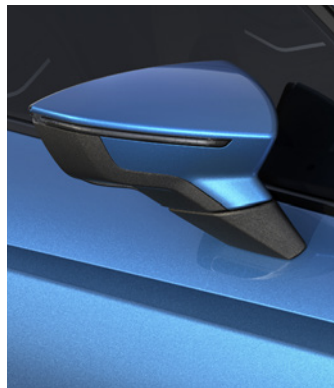
Desire Red²

SE SE Tech FR FRS XC XCL



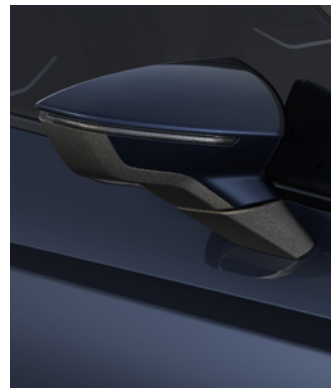
Emocion Red¹

SE SE Tech FR FRS XC XCL



Sapphire Blue²

SE SE Tech FR FRS XC XCL



Asphalt Blue²

SE SE Tech FR FRS XC XCL



Midnight Black²

SE SE Tech FR FRS XC XCL

SE SE SE Tech SE Technology FR FR FRS FR Sport XC XCELLENCE XCL XCELLENCE Lux ¹Non-metallic ²Metallic

Equipment.

■ Standard – Not available

	SE	SE Technology	FR	FR Sport	XCELLENCE	XCELLENCE Lux
Wheels and tyres						
15" 'Enjoy' alloy wheels in Brilliant Silver	■	-	-	-	-	-
16" 'Design' machined alloy wheels in Nuclear Grey	-	■	-	-	-	-
17" alloy wheels in Brilliant Silver	-	-	■	-	-	-
18" 'Performance' machined alloy wheels in Black and Grey	-	-	-	■	-	-
17" 'Dynamic' machined alloy wheels in Nuclear Grey	-	-	-	-	■	■
Anti theft wheel bolts	■	■	■	■	■	■
Emergency tyre repair kit	■	■	■	■	■	■

Equipment.

■ Standard – Not available

	SE	SE Technology	FR	FR Sport	XCELLENCE	XCELLENCE Lux
Exterior equipment						
Dark tinted rear windows	-	-	■	■	■	■
Fog lights front and rear	■	■	■	■	■	■
ECO LED automatic headlights and LED daytime running lights	■	■	-	-	-	-
FULL LED automatic headlights with dynamic headlight range control, coming and leaving home feature and LED daytime running lights	-	-	■	■	■	■
Halogen tail lights	■	■	-	-	-	-
LED tail lights	-	-	■	■	■	■
Electrically adjustable door mirrors	■	■	-	-	-	-
Electrically adjustable, folding, heated door mirrors	-	-	■	■	■	■
Metallic paint	■	■	■	■	■	■
SE Exterior styling: Body coloured bumpers, door handles and mirror caps	■	■	-	-	-	-
FR Exterior styling: Brilliant black window surrounds, black mirror caps and body coloured door handles, rear spoiler with FR twin exhausts	-	-	■	■	-	-
XCELLENCE Exterior styling: Chrome window surrounds and upper grille surround; Atom grey mirror caps; body coloured door handles	-	-	-	-	■	■

Equipment.

■ Standard – Not available

	SE	SE Technology	FR	FR Sport	XCELLENCE	XCELLENCE Lux
Infotainment						
Bluetooth® audio streaming and handsfree system	■	■	■	■	■	■
Full Link smartphone integration: (Mirror Link, Wireless Apple CarPlay, Google Android Auto) with USB-C cable for Apple and Android compatibility	■	■	■	■	■	■
Digital cockpit	-	-	-	■	-	■
Colour media system: 8.25" colour touchscreen, USB-C port, aux-in, SD card slot	■	-	-	-	-	-
Navigation system: 9.2" colour touchscreen, 3D map display, voice control, additional USB-C port	-	■	■	■	■	■
SEAT Connect: Safety, Service and Remote Access: Safety & Service: 10 year subscription included: • Private emergency call • Breakdown call • Service scheduling	■	-	-	-	-	-
Remote Access: 12 month subscription included: • Driving data • Parking position • Remote lock and unlock • Anti-theft/area/speed alert	■	-	-	-	-	-
SEAT Connect: Safety, Service, Remote & Online: As per SEAT Connect: Safety, Service and Remote access plus: • Online infotainment: 12 month subscription included: • Online map update • Online traffic information • Online route calculation • Parking and petrol stations	-	■	■	■	■	■
Six speakers	■	■	■	■	■	■
SD Card Map updates for 1 year	-	■	■	■	■	■

The SEAT Connect services can be operated only by using available public communication technologies. Please note that due to development of these technologies, especially mobile networks, SEAT cannot guarantee consistent availability in all countries for the duration of SEAT Connect services. Possible changes in technology may cause permanent unavailability of them.

Equipment.

■ Standard – Not available

	SE	SE Technology	FR	FR Sport	XCELLENCE	XCELLENCE Lux
Interior equipment						
Sunvisors with mirror and card holder driver side	■	■	■	■	■	■
Dimming interior rear view mirror	■	■	-	-	-	-
Auto-dimming rear view mirror	-	-	■	■	■	■
Front reading lights	■	■	■	■	■	■
Interior ambient lighting	-	-	■	■	■	■
Illuminated air vent surrounds	-	-	■	■	■	■
Front centre armrest	-	-	-	-	■	■
Storage pockets on back of front seats	-	-	-	■	■	■
Height-adjustable front seats (drivers side only on SE)	■	■	■	■	■	■
Split and folding rear seats (60/40)	■	■	■	■	■	■
Height-adjustable front and rear headrests (three in rear)	■	■	■	■	■	■
Leather multifunction flat-bottomed sports steering wheel (with gearshift paddles on FR DSG)	■	■	■	■	■	■
Comfort seats in cloth	■	■	-	-	-	-
FR sports seats in cloth	-	-	■	-	-	-
Comfort seats in Microsuede	-	-	-	■	■	■
SE Interior styling: Chrome interior detailing, grey headlining	■	■	-	-	-	-
FR Interior styling: Chrome detailing, black headlining	-	-	■	■	-	-
XCELLENCE Interior styling : Chrome detailing, black headlining	-	-	-	-	■	■
Coloured interior air vents (SE, SE Tech: Honey Mustard; FR FR Sport: Red; Xcellence Xcellence Lux: Burgundy)	■	■	■	■	■	■

Equipment.

■ Standard □ Optional – Not available

	SE	SE Technology	FR	FR Sport	XCELLENCE	XCELLENCE Lux
Functional and mechanical						
Air conditioning with dust and pollen filter	■	■	–	–	–	–
Dual-zone climate control with combination filter	–	–	■	■	■	■
Auto-headlights	■	■	■	■	■	■
Cruise control	■	■	■	■	■	–
Adaptive Cruise Control (ACC)	–	–	–	–	–	■
Speed limiter	■	■	■	■	■	■
Rain sensing wipers	–	–	■	■	■	■
Electric front windows	■	■	■	■	■	■
Electric rear windows	–	–	■	■	■	■
KESY (Keyless entry & go)	–	–	–	–	■	■
Rear parking sensors	□	□	□	□	■	■
Rear view camera with front and rear parking sensors	–	–	–	–	–	■
SEAT Drive Profiles and ECO function ¹	–	–	■	■	–	■
Steering wheel-mounted gearshift paddles (FR DSG models only)	–	–	■	■	–	–
Suspension (comfort)	■	■	–	–	■	■
Suspension (sport)	–	–	■	■	–	–

¹Not available on MPI engines.

Equipment.

■ Standard □ Optional – Not available

	SE	SE Technology	FR	FR Sport	XCELLENCE	XCELLENCE Lux
Safety and security						
Alarm & Electronic engine immobiliser	□	□	■	■	■	■
Dynamic Road Sign Display	–	–	□	□	□	■
Electronic Stability Control (ESC)	■	■	■	■	■	■
Front driver and passenger side airbags with curtain airbag and front passenger airbag deactivation	■	■	■	■	■	■
Front Assist (forward collision warning) and autonomous emergency braking (AEB)	■	■	■	■	■	■
High Beam Assist	–	–	–	–	–	■
Hill hold control	■	■	■	■	■	■
ISOFIX	■	■	■	■	■	■
Lane Assist	■	■	■	■	■	■
Anti theft wheel bolts	■	■	■	■	■	■
Seat belt reminder for front and rear seats	■	■	■	■	■	■
Three-point seat belts on all rear seats	■	■	■	■	■	■
Tiredness recognition system	■	■	■	■	■	■
Tyre pressure monitoring	■	■	■	■	■	■

Option prices.

■ Standard □ Optional – Not available

	SE	SE Technology	FR	FR Sport	XCELLENCE	XCELLENCE Lux	Basic price	VAT @ 20%	Recommended retail price
Wheels and tyres									
Space saver spare wheel (in lieu of standard tyre repair kit)	□	□	□	□	□	□	£87.50	£17.50	£105.00
Infotainment									
BeatsAudio™: 18" space saving spare wheel and luggage compartment lining	□	□	□	□	□	□	£ 408.33	£81.67	£490.00
Functional and mechanical									
Rear parking sensors	□	□	□	□	■	■	£183.33	£36.37	£220.00
Panoramic sunroof	□	□	□	□	□	□	£562.50	£112.50	£675.00
Grey interior air vents (removes Honey Mustard, Red or Burgundy air vents)	□	□	□	□	□	□	£0.00	£0.00	£0.00
Safety and security									
Alarm (perimeter and interior monitoring) with back-up horn and tow-away protection	□	□	■	■	■	■	£133.33	£26.67	£160.00
Safety and Driving Pack (M) (Not available on MPI engine) Containing: Adaptive Cruise Control, High Beam Assist, Dynamic Road sign display	-	-	□	□	□	■	£187.50	£37.50	£225.00
Safety and Driving Pack (XL) (Not available on MPI engine) Contains: Adaptive Cruise Control, High Beam Assist, Dynamic Road sign display, Lane Keeping system with traffic jam assist	-	-	□	□	□	□	£291.67	£58.33	£350.00

Vehicle excise duty.

All new vehicles are subject to a form of Vehicle Excise Duty (VED) based on the type of fuel the vehicle uses and its carbon dioxide (CO₂) emission level, measured in grammes per kilometre (g/km). The table below illustrates the duty you will pay based on the DVLA bandings.

12-month Road Fund Licence (RFL) rate for petrol and diesel cars: Cars registered on or after 1 April 2021

CO ₂ g/km	1st year rate – Petrol / Diesel	1st year rate – Alternative Fuel Vehicles (AFVs)
0	£0	£0
1	£10	£0
51	£25	£15
76	£115	£105
91	£140	£130
101	£160	£150
111	£180	£170
131	£220	£210
151	£555	£545
171	£895	£885
191	£1,345	£1,335
226	£1,910	£1,900
256	£2,245	£2,235

The standard rate for Petrol and Diesel is £155 and £145 for Alternative Fuel Vehicles. Please be aware vehicles with a list price (RRP), including options, higher than £40,000 will incur an additional £335 a year in vehicle tax, from the second time the vehicle is taxed.

For full details please refer to gov.uk/vehicle-tax-rate-tables

Benefit in kind tax.

How to calculate your liability

The BIK percentage value is based on the CO₂ emissions of the vehicle for the current tax year 2021/22.

BIK calculation example: Ibiza SE 1.0 TSI 95PS

P11D value (OTR price less RFL and first registration fee) £16,710.00

WLTP CO₂ emissions (g/km) 118

Company car BIK tax based on CO₂ emission level 27%

Taxable BIK (for 2021/22 tax year):
27% of £16,710.00 £4511.70

Annual Company Car Tax 2021/22 (@20% Income Tax)

20% of £4,511.70 £902.34 per annum

Monthly Company Car Tax 2021/22 (@20% Income Tax)

£902.34 divided by 12 £75.20 per month

Technical data.

	1.0 MPI 80PS	1.0 TSI 95PS	1.0 TSI 110PS	1.0 TSI DSG-auto 110PS
Engine				
Type (cylinders / valves per cylinder)	3/4	3 /4	3 /4	3 / 4
Displacement (cc)	999	999	999	999
Bore and stroke (mm)	74.5 x 76.4	74.5 x 76.4	74.5 x 76.4	74.5 x 76.4
Compression ratio	12	11.5	11.5	11.5
Maximum power (PS / kW / rpm) ¹	80 / 59 / 6300	95 / 70 / 5000-5500	110 / 81 / 5500	110 / 81 / 5500
Maximum torque (Nm / rpm)	93 / 3700-3900	175 / 2000-3500	200 / 2000-3500	200 / 2000-3000
Fuel supply system	Multipoint Injection	TSI Direct Injection	TSI Direct Injection	TSI Direct Injection
Fuel type	Unleaded petrol	Unleaded petrol	Unleaded petrol	Unleaded petrol
Emission control	RDE 2	RDE 2	RDE 2	RDE 2
Start/stop system	Yes	Yes	Yes	Yes
Energy recovery system	Yes	Yes	Yes	Yes
Performance				
Maximum speed (km/h)	170	186	195	195
Maximum speed (mph) ²	106	116	121	121
Acceleration 0-62mph (s)	15.3	10.9	10.3	10.3
Fuel consumption³ (WLTP)				
Combined mpg range	48.7-53.3	47.9-54.3	48.7-52.3	44.1-48.7

1. The maximum power output figures are quoted in PS (or Pferdestärke, which is the metric equivalent of horsepower). To convert from metric to imperial horsepower, divide the PS by 1.0139.

2. Where law permits.

3. Figures shown are for comparability purposes; only compare fuel consumption and CO₂ figures with other vehicles tested to the same technical procedures. These figures may not reflect real life driving results, which will depend upon a number of factors including the accessories fitted (post-registration), variations in weather, driving styles and vehicle load. Data correct at 12/08/2021.

Technical data.

	1.0 MPI 80PS	1.0 TSI 95PS	1.0 TSI 110PS	1.0 TSI DSG-auto 110PS
Trim & emission (WLTP) CO₂ (g/km)				
SE	121	118	-	-
SE Technology	121	118	-	-
FR	126	124	123	132
FR Sport	127	125	123	132
XCELLENCE	-	126	124	133
XCELLENCE Lux	-	126	124	133
Transmission				
Gearbox type	5-speed manual	5-speed manual	6-speed manual	7-speed automatic
Chassis				
Front suspension	Independent type McPherson, coil springs and hydraulic shock absorber			
Rear suspension	Semi-rigid rear axle, coil springs, hydraulic shock absorber			
Steering system	C-EPS (Column Electric Power Steering)			
Turning circle diameter [wall to wall] (m)	10.6			
Braking system				
Anti-lock Braking System (ABS)	Yes	Yes	Yes	Yes
Type (front/rear)	Ventilated front brakes / Drum brakes in rear axle	Ventilated front brakes / Drum brakes in rear axle	Ventilated front brakes / Disc brakes in rear axle	Ventilated front brakes / Disc brakes in rear axle
Front discs (mm)	256 x 22	256 x 22	276 x 24	276 x 24
Rear discs (mm)	203 x 38	228 x 42	230 x 9	230 x 9

For full details on fuel consumption, CO₂ figures and VED bands (Vehicle Excise Duty) please see page 22.

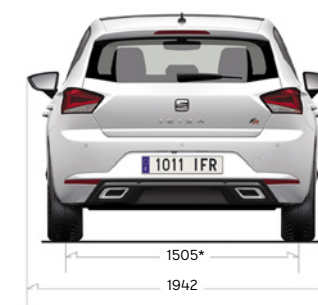
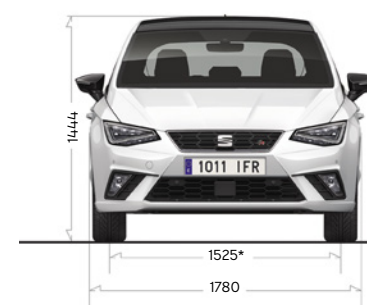
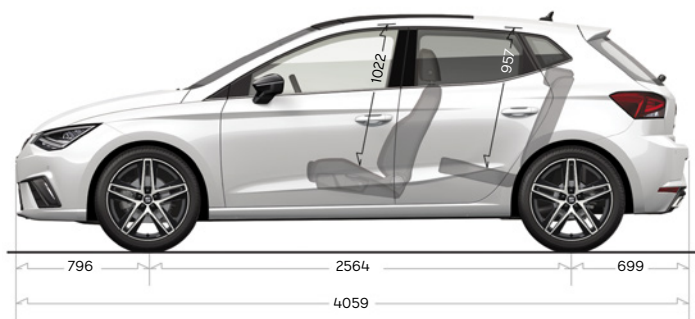
Technical data.

	1.0 MPI 80PS	1.0 TSI 95PS	1.0 TSI 110PS	1.0 TSI DSG-auto 110PS
Weights				
Kerb weight [with driver] (kg)	1110	1145	1169	1166
Permissible gross weight (kg)	1630	1650	1670	1690
Max. towing weight without brake (kg)	540	560	570	580
Max. towing weight with brake 8% (kg)	1000	1100	1200	1200
Max. towing weight with brake 12% (kg)	800	1000	1100	1100

Dimensions

Boot capacity (l): 355

Fuel tank capacity (l): 40

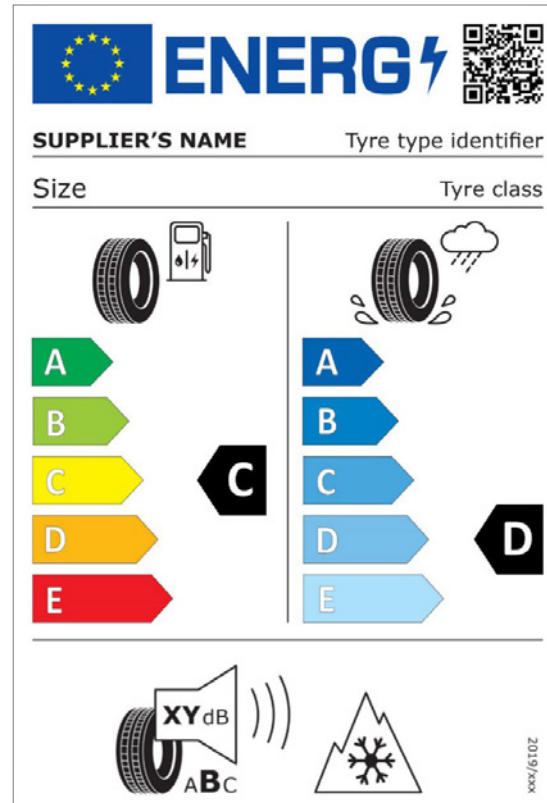


Your tyre label.

They may not be the first part of your SEAT you notice, but your tyres play a vital role in keeping you on the road. Your EU tyre label tells you everything you need to know.

You'll see detailed information on your tyres and their technical specifications on the SEAT online car configurator. Click [here](#) to start building your SEAT now.

Due to the variation of tyres that may be fitted during production, the configurator will show multiple tyre labels. It is not possible to select a specific tyre when ordering a vehicle.



Fuel efficiency

This is a measure of 'rolling resistance' – in other words, the amount of energy lost through motion. The lower the rolling resistance, the lower your fuel consumption, with tyres rated as class A being the most efficient.

Wet grip

Rigorous testing ensures your tyres give great handling and performance in all conditions. Wet grip specifically measures how well you can brake in wet conditions, with grade A giving the shortest stopping distance.

External noise

Tyres are carefully measured so you know exactly how much noise they'll make while driving. If decibels don't mean a lot to you, don't worry. Each tyre also falls into a noise class A being the quietest and C the loudest.

Warranties & service plans.

Optional

Extended Warranties	All trims	Basic price	VAT @ 20%	Recommended retail price	
When you buy a new SEAT it is covered by a 3 year/60,000 miles manufacturer warranty. You can extend this cover, with a 4 year/75,000 miles or 5 year/90,000 miles SEAT Extended Manufacturer Warranty, and get the same level of cover. It is fully transferable to a new owner if you decided to sell your SEAT.	4 years/75,000 miles	<input type="checkbox"/>	£137.50	£27.50	£165.00
Please note: The SEAT Extended Manufacturer Warranty is only available at the time of ordering a new SEAT.	5 years/90,000 miles	<input type="checkbox"/>	£237.50	£47.50	£285.00

Extended Warranty for existing owners: If your existing warranty is about to expire, or if you haven't already got one in place, our Extended Warranty* is designed to protect you. For a quote, visit insurewithseat.co.uk

*SEAT Financial Services is a trading name of Volkswagen Financial Services (UK) Limited. SEAT Extended Warranty is sold and administered by Lawshield UK and underwritten by Volkswagen Versicherung AG. Terms, conditions, and eligibility criteria apply.

Service plan	All trims	Upfront payment	or	Monthly cost
New Fixed Price Service Plans are available for cars up to 12 months. You always know where you are with our fixed price plans which are inflation proof. Available at participating SEAT Retailers.				
Go to seat.co.uk/bookservice	Includes 1st and 2nd service	<input type="checkbox"/>	£414.00	24 monthly payments of £17.25

Prices are subject to change.

The SEAT Warranty

Three-year Warranty.

All new SEAT's registered in the UK come with a three year/60,000 miles warranty, which protects your car against the failure of most mechanical and electrical components due to manufacturing defects. This comprises a two-year manufacturer's warranty with unlimited mileage plus a further one-year/60,000 (whichever is soonest).

Retailer Warranty.

Should the mileage exceed 60,000 miles within the first two years, the manufacturer's two-year warranty will still be valid. If an additional warranty for subsequent years or higher mileage is desired, it may be purchased from an authorised SEAT Retailer or repairer, however, this additional warranty must be purchased before the mileage reaches 60,000. Cover is subject to the car being serviced and maintained according to the manufacturer's technical guidelines.

Full details of the three-year warranty are available from your SEAT Retailer or repairer.

Warranties & service plans.

SEAT Extended Manufacturer Warranty

If you take out a SEAT Extended Manufacturer Warranty before your new car is registered, you'll get exactly the same level of cover as the three year warranty, but for up to five years. You can choose a SEAT Extended Manufacturer Warranty to last until the end of the 4th year/up to 75,000 miles or until the end of the 5th year/up to 90,000 miles (whichever is soonest). Please note: SEAT Extended Manufacturer Warranty products are only available at the time of ordering your new SEAT.

Three-year Paint Warranty

The paintwork of all models featured in this price list is covered against manufacturing defects for a period of three years. Naturally, the vehicle must be cared for in compliance with the operating instructions which will be found in your vehicle handbook. Please consult your authorised SEAT Retailer or repairer for full warranty details.

Twelve-year Body Protection Warranty

The internal body sections and panels of the models featured in this price list are covered against rusting through from the outside for twelve years. Naturally, the vehicle must be cared for in compliance with the operating instructions which will be found in your vehicle handbook. Please consult your authorised SEAT Retailer or repairer for full warranty details.

SEAT Parts Warranty

SEAT parts and accessories supplied after new vehicle delivery are covered by our 24 months parts warranty.

SEAT Car Insurance

Complimentary drive away cover

We want you to start enjoying your car from day one, and with our 5 day Drive Away Insurance you can. Our comprehensive cover is designed specifically for SEAT drivers, and offers many features and benefits as standard. To activate, simply call 0345 246 3519. If you are eligible, we will also provide you with an annual quotation giving you the option to purchase 12 months cover. Subject to eligibility. Five day drive away insurance cannot be used in conjunction with any other insurance offer.

Annual Car Insurance

If you take out a new SEAT Car Insurance* policy, you will receive the following benefits as standard:

- SEAT Approved Repairs carried out by SEAT Approved technicians using only Genuine Parts and Paints
- Guaranteed courtesy car
- Windscreen cover
- Uninsured driver promise

- 24hr accident recovery
- Personal accident cover
- Personal belongings cover
- Child seat replacement

For more information or to get a quote, please visit insurewithseat.co.uk or alternatively call us on 0345 877 6555. We're available Monday to Friday 8am-8pm and Saturday 9am-5pm.

SEAT Roadside Assistance (including European cover)

Any new SEAT purchased and registered in the UK from an authorised SEAT Retailer, is covered free by SEAT Assistance (including European cover) for roadside repairs or recovery to an authorised repairer for a term of two years. Terms and conditions apply.

Specifications

Specifications refer to Model Year 2022. While SEAT makes every effort to make sure that specifications are accurate at time of going to press (08/2021), you should always check details with your SEAT Retailer as there may have been changes in view of SEAT's policy of continuous product improvement. The right is reserved to change specification and colour at any time. The information in this price list can therefore be given as guidance only.

*SEAT Car Insurance is underwritten by U K Insurance Limited. Registered Office: The Wharf, Neville Street, Leeds LS1 4AZ. Registered in England and Wales No. 1179980. U K Insurance Limited is authorised by the Prudential Regulation Authority and regulated by the Financial Conduct Authority and the Prudential Regulation Authority. Calls may be recorded. SEAT Financial Services is a trading name of Volkswagen Financial Services (UK) Limited ("VWFS UK"), registered in England and Wales No.2835230 (registered office: Brunswick Court, Yeomans Drive, Blakelands, Milton Keynes MK14 5LR). Volkswagen Insurance Service (Great Britain) Ltd is an appointed representative of VWFS UK. VWFS UK is authorised and regulated by the Financial Conduct Authority, registration number 311988. Authorisation details for both organisations can be checked on the Financial Services Register by visiting fca.org.uk. VWFS UK and U K Insurance Limited are not part of the same corporate group.



SEAT is committed to a policy of continuous product development and reserves the right to make changes to specifications, colours and prices without notice. The information in this brochure can therefore be given as guidance only. While SEAT makes every effort to ensure that specifications are accurate at the time of publication, you should always check with your authorised SEAT Partner for the latest information. Due to limitations of the printing process the colours reproduced in this brochure may vary slightly from the actual paint colour and material. This vehicle and all its parts, as well as the original spares, were designed according to the Legal Regulations governing the prevention and minimisation of Environmental Impact, through the use of recycled/recyclable materials, with measures taken to achieve suitable recycling for the conservation and improvement of environmental quality.

Published in the UK, August 2021.

seat.co.uk