

# The Passat and Passat Estate

## Price and specification guide

Effective from 1.7.2021



Please note, the Volkswagen roundel depicted in the interior and exterior images featured in this publication does not represent the new Volkswagen brand identity so, therefore, will appear different.



# Intuitive, intelligent and quite simply inspirational.

Everything about the Passat is designed to make your busy life easier, safer and more comfortable. It's the first Volkswagen to offer the new IQ.Drive system 'Travel Assist', providing partially assisted driving with control of steering, braking and acceleration up to 130mph (where the law permits) aided by a touch-sensitive steering wheel, another Volkswagen first. A self-assured exterior showcases stylish contours, an updated front grille, LED headlights and colours including Lapis Blue. While the restyled interior is spacious and packed with features such as seamless smartphone integration, Adaptive Cruise Control with Lane Assist and parking sensors as standard. Available as a Saloon or an Estate, the latter with a vast 650 litre luggage compartment volume. Trim levels include SE Nav, SEL and R-Line, and there are also Saloon and Estate GTE plug-in hybrids.





# R-Line. For those who demand the best.

The Passat R-Line raises the bar when it comes to style. Distinctive R-Line accents include specially designed front and rear bumpers, chrome body trim highlights, LED headlights blending seamlessly into the front chrome radiator grille and 'Gloss Black' surrounds featuring integrated fog lights. The exterior styling continues with the striking tornado line that runs from the front panel to the rear, as does the chrome detailing on the lower doors and lower front and rear bumpers. Side skirts and a 'Gloss Black' rear diffuser add to the sporty look and are enhanced by LED rear tail lights. Dynamic, sporty and self-assured, the Passat R-Line commands attention, leaving a lasting impression wherever it goes.

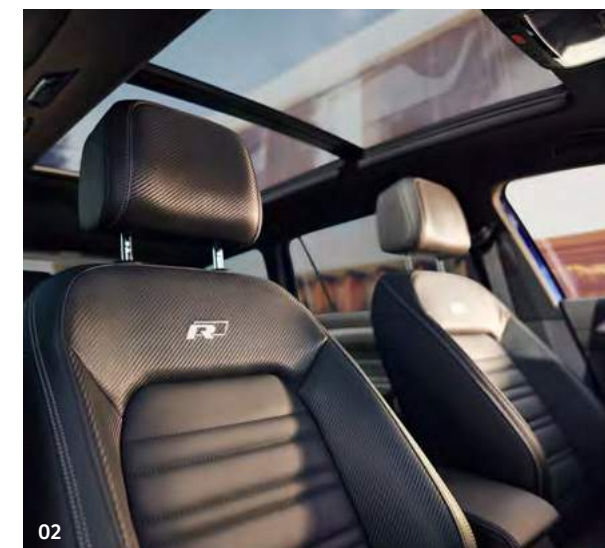


Model shown is Passat R-Line with optional 'IQ. Light' LED matrix headlights, 19" 'Pretoria' Dark Graphite alloy wheels and metallic signature paint.





01



02

**01 The R-Line interior** features an intuitive multifunction steering wheel, finished in Titan Black 'Nappa' leather<sup>1</sup> with 'R-Line' logo, and complementary decorative dashboard accents in 'Dark Diamond Flag'. Also included are pedals and door sill protectors in stainless steel effect and ambient lighting. Many of Volkswagen's technologies are fitted as standard, including the Discover Navigation infotainment system with integrated eSIM card and 'R-Line' start-screen. Furthermore, thanks to the new Wireless 'App-Connect'<sup>2</sup>, your Passat can connect with current Apple or Android smartphones through three innovative technologies: 'MirrorLink'™, Apple 'CarPlay' and Google 'Android Auto'. Image shown features an optional Discover Navigation Pro infotainment system, Active Info Display and metallic signature paint.

**02 R-Line sports seats** for the driver and front passenger are both contemporary and stylish, featuring seat centre sections in Titan Black 'Nappa' leather<sup>1</sup> with 'Carbon Optic' side bolsters and the distinctive 'R-Line' logo displayed on the front seat backrest. Image shown features optional panoramic sunroof and metallic signature paint.

1 Some parts of leather interior will contain artificial leather.  
2 Only operable in conjunction with compatible smartphones including iPhone 5 and above. Display and operation of certified apps including audio and voice control (if supported by the app). Usage of certified apps only while driving. Please see [www.volkswagen.co.uk](http://www.volkswagen.co.uk) to check smartphone compatibility.



# Work. Life.

## And Eco Balance. All in one.

With its powerful 1.4 litre TSI petrol engine, the Passat GTE with plug-in hybrid technology puts you on the road to tomorrow. Powered by a turbocharged engine and electric motor, delivering a combined output of 218 PS, it is capable of travelling up to 40 miles<sup>1</sup> (WLTP cycle) on one battery charge. That's 12 miles further than the previous GTE model, representing an increase of 40%. Elegant signature highlights inside and out create an expressive, graceful design, while 'Vienna' leather<sup>2</sup> upholstery, 'Blue' ambient lighting, striking 'Blue' brake callipers and characteristic 'C' signature LED daytime running lights add a sporty, confident touch.



01

**01** The large capacity 13 kWh battery increases the electric-only range up to 40 miles<sup>1</sup> of **emission-free driving**. Charging time is around four hours, while driving modes allow you to save battery use for zero-emission zones. For drivers commuting into London, the GTE is exempt from the Congestion Charge. Model shown is Passat Estate GTE.

<sup>1</sup> Please visit [www.volkswagen.co.uk](http://www.volkswagen.co.uk) for CO<sub>2</sub> emissions and fuel consumption figures. Figures based on a fully charged battery at the start of the journey and dependent on outdoor temperature and driving style. 40 miles is the range for the Saloon GTE model. Please see the [Environmental Information section](#) for specific model's electric range.

<sup>2</sup> Some parts of leather interior will contain artificial leather.



Models shown are Passat Estate GTE with optional 'IQ, Light' LED matrix headlights, panoramic sunroof and Head-up Display, and Passat GTE Advance with optional 19" 'Pretoria' Dark Graphite alloy wheels.

<a href="#">The Passat and Passat Estate</a>	<a href="#">Model prices</a>	<a href="#">Standard equipment</a>	<a href="#">Driver's assistance systems</a>	<a href="#">Infotainment and connectivity</a>	<a href="#">Factory-fitted options</a>	<a href="#">Accessories</a>	<a href="#">Alloy wheels</a>	<a href="#">Paint</a>	<a href="#">Upholstery and decorative inserts</a>	<a href="#">Combinations</a>	<a href="#">Dimensions</a>	<a href="#">AdBlue®</a>	<a href="#">VED and additional 'On the road' costs</a>	<a href="#">Environmental information</a>	<a href="#">CO<sub>2</sub>, BIK % and VED Bands with optional wheels</a>	<a href="#">Company car taxation chart and comparison</a>	<a href="#">Volkswagen service and service plan</a>
--	------------------------------	------------------------------------	---	---	--	-----------------------------	------------------------------	-----------------------	---	------------------------------	----------------------------	-------------------------	--	---	--	---	---



# Model prices – Passat.

4-DOOR SALOON RANGE.		RDE2 Compliant	Fuel		Transmission	Output, PS	CO <sub>2</sub> emission, g/km <sup>1</sup> WLTP test cycle	Basic Recommended Retail £	VAT £	Total Recommended Retail £	Additional 'On the road' Costs £ <sup>2</sup>	Manufacturer's Recommended 'On the road' Retail £ <sup>2</sup>	P11D Value £ <sup>3</sup>	BIK % <sup>4</sup>	ABI Insurance Group <sup>5</sup>
SE NAV <sup>‡</sup>	1.5 ltr TSI EVO <sup>‡</sup>	Yes	Petrol	4-door	6-spd manual	150	138	22,366.67	4,473.33	26,840.00	910.00	27,750.00	27,475.00	31	21E
	1.5 ltr TSI EVO <sup>‡</sup>	Yes	Petrol	4-door	7-spd auto DSG	150	141	23,700.00	4,740.00	28,440.00	910.00	29,350.00	29,075.00	32	21E
	2.0 ltr TDI EVO SCR <sup>‡</sup>	Yes	Diesel	4-door	7-spd auto DSG	122	124	24,608.33	4,921.67	29,530.00	870.00	30,400.00	30,165.00	28	16E
	2.0 ltr TDI EVO SCR <sup>‡</sup>	Yes	Diesel	4-door	6-spd manual	150	123	24,358.33	4,871.67	29,230.00	870.00	30,100.00	29,865.00	28	21E
	2.0 ltr TDI EVO SCR <sup>‡</sup>	Yes	Diesel	4-door	7-spd auto DSG	150	123	25,691.67	5,138.33	30,830.00	870.00	31,700.00	31,465.00	28	22E

1 Figures for the Volkswagen Passat range, including petrol, diesel and hybrid vehicles. Plug-in hybrid vehicles require mains electricity for charging. Figures for hybrid vehicles were obtained using a combination of battery power and fuel. Figures shown are for comparability purposes; only compare fuel consumption, CO<sub>2</sub> and electric range figures with other vehicles tested to the same technical procedures. These figures may not reflect real life driving results, which will depend upon a number of factors including the accessories fitted (post-registration), variations in weather, driving styles and vehicle load. Data correct at 1.7.2021. For more information, please see [www.volkswagen.co.uk/need-help/wltp](http://www.volkswagen.co.uk/need-help/wltp) or consult your authorised Volkswagen retailer. 2 The recommended 'On the road' prices and any VED charges quoted reflect the VED charges which apply to vehicles registered after 1 April 2021. The price and charges you pay may differ from any prices or charges displayed or quoted before 1 April 2021. For full details of 'First year rate' VED (Vehicle Excise Duty), delivery to retailer, number plates and vehicle first registration fee included in the recommended 'On the road' retail price, [please click here](#) 3 P11D value = Total recommended retail price + delivery to retailer £509.17, + number plates £20, + VAT £105.83 (calculated by reference to total of delivery to retailer + number plates). P11D value is based on standard specification model with no factory-fitted options or other accessories. 4 The BIK charges quoted reflect the charges which apply to vehicles registered after 6 April 2021. These charges may differ from any charges displayed or quoted before 6 April 2021. The BIK % figure quoted includes the 4% diesel supplement, where applicable. Please consult your Volkswagen retailer for full details. 5 The ABI insurance group is the recommended insurance rating set by the Association of British Insurers. Please note that insurance group ratings are purely advisory. They are used by insurers (ABI members and Lloyd's syndicates) as one of the factors in calculating premiums. Insurers are not required to follow the advisory group ratings and they may depart from them if they so wish.

<sup>‡</sup> These vehicles are WLTP (Worldwide Harmonised Light-Duty Vehicles Test Procedure) type approved vehicles. More information is available at [www.volkswagen.co.uk/need-help/wltp](http://www.volkswagen.co.uk/need-help/wltp).

<sup>†</sup> Please note these models may no longer be available to order, or only be available from stock and not available to factory order.

SCR (Selective Catalytic Reduction) requires AdBlue®, [please click here](#) or visit [www.volkswagen.co.uk/technology/engines/adblue](http://www.volkswagen.co.uk/technology/engines/adblue) for more details.

RDE2 refers to Real Driving Emissions Step 2.

# Volkswagen Service Plan – Retail sales only.

For vehicles under 1 year old set to the Fixed Service regime that has not had its first service, comprising first two manufacturer's scheduled services:

– 'Oil service' including oil filter change

– 'Oil service' including oil filter change and 'Inspection service' plus a pollen filter replacement (if required)

Excludes electric vehicles. Service plan covers first two consecutive services, limited to 1x 'Oil service' and 1x 'Oil and Inspection service'. T&Cs apply: All vehicles must be set to the Fixed Service regime by the retailer. Maximum age of car is 12 months (Service plan must be taken out before first service is due). Additional work, including wear and tear is excluded. Servicing must be carried out in line with the requirement of the Service Schedule. All work must be carried out by an Authorised Volkswagen Repairer. Offers may be varied or withdrawn at any time. Plan validity is dependent on required payments received. Administered by Volkswagen Financial Services. Retail sales only. For pricing and further details, please consult your authorised Volkswagen retailer or visit [www.volkswagen.co.uk](http://www.volkswagen.co.uk)

*Prices, specifications, features, technical and other information (including fuel consumption, CO<sub>2</sub> emissions and range) are updated regularly and are subject to change without notice (this may include changes between order and delivery). There may be a delay in updates to our materials – always consult your authorised Volkswagen retailer for the latest information.*

*Volkswagen UK may change RRP's at any time (this includes where there are government changes in regulation and/or legislation).*

*There may be a delay to any RRP displaying correctly on our materials. Always obtain prices from your chosen authorised Volkswagen retailer..*

VAT IS CALCULATED AT 20%. EFFECTIVE FROM 1 JULY 2021.

The Passat and  
Passat Estate

Model prices  
● ● ● ● ●

Standard  
equipment

Driver's  
assistance  
systems

Infotainment  
and connectivity

Factory-fitted  
options

Accessories

Alloy wheels

Paint

Upholstery  
and decorative  
inserts

Combinations

Dimensions

AdBlue®

VED and  
additional  
'On the road'  
costs

Environmental  
information

CO<sub>2</sub>, BIK % and  
VED Bands with  
optional wheels

Company car  
taxation chart  
and comparison

Volkswagen  
service and  
service plan



[Configure now >](#)

# Model prices – Passat.

4-DOOR SALOON RANGE.		RDE2 Compliant	Fuel		Transmission	Output, PS	CO <sub>2</sub> emission, g/km <sup>1</sup> WLTP test cycle	Basic Recommended Retail £	VAT £	Total Recommended Retail £	Additional 'On the road' Costs £ <sup>2</sup>	Manufacturer's Recommended 'On the road' Retail £ <sup>2</sup>	P11D Value £ <sup>3</sup>	BIK % <sup>4</sup>	ABI Insurance Group <sup>5</sup>
SEL <sup>‡</sup>	1.5 ltr TSI EVO <sup>‡</sup>	Yes	Petrol	4-door	6-spd manual	150	139	22,895.83	4,579.17	27,475.00	910.00	28,385.00	28,110.00	31	21E
	1.5 ltr TSI EVO <sup>‡</sup>	Yes	Petrol	4-door	7-spd auto DSG	150	141	24,229.17	4,845.83	29,075.00	910.00	29,985.00	29,710.00	32	21E
	2.0 ltr TDI EVO SCR <sup>‡</sup>	Yes	Diesel	4-door	7-spd auto DSG	122	124	25,137.50	5,027.50	30,165.00	870.00	31,035.00	30,800.00	28	16E
	2.0 ltr TDI EVO SCR <sup>‡</sup>	Yes	Diesel	4-door	6-spd manual	150	124	24,887.50	4,977.50	29,865.00	870.00	30,735.00	30,500.00	28	21E
	2.0 ltr TDI EVO SCR <sup>‡</sup>	Yes	Diesel	4-door	7-spd auto DSG	150	123	26,220.83	5,244.17	31,465.00	870.00	32,335.00	32,100.00	28	22E
R-LINE <sup>‡</sup>	1.5 ltr TSI EVO <sup>‡</sup>	Yes	Petrol	4-door	6-spd manual	150	142	25,287.50	5,057.50	30,345.00	910.00	31,255.00	30,980.00	32	21E
	1.5 ltr TSI EVO <sup>‡</sup>	Yes	Petrol	4-door	7-spd auto DSG	150	145	26,620.83	5,324.17	31,945.00	910.00	32,855.00	32,580.00	33	22E
	2.0 ltr TDI EVO SCR <sup>‡</sup>	Yes	Diesel	4-door	6-spd manual	150	126	27,279.17	5,455.83	32,735.00	870.00	33,605.00	33,370.00	29	22E
	2.0 ltr TDI EVO SCR <sup>‡</sup>	Yes	Diesel	4-door	7-spd auto DSG	150	126	28,612.50	5,722.50	34,335.00	870.00	35,205.00	34,970.00	29	22E
	2.0 ltr TDI SCR <sup>‡</sup>	Yes	Diesel	4-door	7-spd auto DSG	200	137	29,862.50	5,972.50	35,835.00	910.00	36,745.00	36,470.00	31	26E

1 Figures for the Volkswagen Passat range, including petrol, diesel and hybrid vehicles. Plug-in hybrid vehicles require mains electricity for charging. Figures for hybrid vehicles were obtained using a combination of battery power and fuel. Figures shown are for comparability purposes; only compare fuel consumption, CO<sub>2</sub> and electric range figures with other vehicles tested to the same technical procedures. These figures may not reflect real life driving results, which will depend upon a number of factors including the accessories fitted (post-registration), variations in weather, driving styles and vehicle load. Data correct at 1.7.2021. For more information, please see [www.volkswagen.co.uk/need-help/wltp](#) or consult your authorised Volkswagen retailer. 2 The recommended 'On the road' prices and any VED charges quoted reflect the VED charges which apply to vehicles registered after 1 April 2021. The price and charges you pay may differ from any prices or charges displayed or quoted before 1 April 2021. For full details of 'First year rate' VED (Vehicle Excise Duty), delivery to retailer, number plates and vehicle first registration fee included in the recommended 'On the road' retail price, [please click here](#) 3 P11D value = Total recommended retail price + delivery to retailer £509.17, + number plates £20, + VAT £105.83 (calculated by reference to total of delivery to retailer + number plates). P11D value is based on standard specification model with no factory-fitted options or other accessories. 4 The BIK charges quoted reflect the charges which apply to vehicles registered after 6 April 2021. These charges may differ from any charges displayed or quoted before 6 April 2021. The BIK % figure quoted includes the 4% diesel supplement, where applicable. Please consult your Volkswagen retailer for full details. 5 The ABI insurance group is the recommended insurance rating set by the Association of British Insurers. Please note that insurance group ratings are purely advisory. They are used by insurers (ABI members and Lloyd's syndicates) as one of the factors in calculating premiums. Insurers are not required to follow the advisory group ratings and they may depart from them if they so wish.

<sup>‡</sup> These vehicles are WLTP (Worldwide Harmonised Light-Duty Vehicles Test Procedure) type approved vehicles. More information is available at [www.volkswagen.co.uk/need-help/wltp](#).

SCR (Selective Catalytic Reduction) requires AdBlue®, [please click here](#) or visit [www.volkswagen.co.uk/technology/engines/adblue](#) for more details.

RDE2 refers to Real Driving Emissions Step 2.

*Prices, specifications, features, technical and other information (including fuel consumption, CO<sub>2</sub> emissions and range) are updated regularly and are subject to change without notice (this may include changes between order and delivery). There may be a delay in updates to our materials – always consult your authorised Volkswagen retailer for the latest information.*

*Volkswagen UK may change RRP's at any time (this includes where there are government changes in regulation and/or legislation).*

*There may be a delay to any RRP displaying correctly on our materials. Always obtain prices from your chosen authorised Volkswagen retailer.*

VAT IS CALCULATED AT 20%. EFFECTIVE FROM 1 JULY 2021.

The Passat and Passat Estate	Model prices • • • • •	Standard equipment	Driver's assistance systems	Infotainment and connectivity	Factory-fitted options	Accessories	Alloy wheels	Paint	Upholstery and decorative inserts	Combinations	Dimensions	AdBlue®	VED and additional 'On the road' costs	Environmental information	CO <sub>2</sub> , BIK % and VED Bands with optional wheels	Company car taxation chart and comparison	Volkswagen service and service plan
------------------------------	---------------------------	--------------------	-----------------------------	-------------------------------	------------------------	-------------	--------------	-------	-----------------------------------	--------------	------------	---------	--	---------------------------	--	---	-------------------------------------

[Configure now >](#)

## Model prices – Passat.

PETROL/ELECTRIC HYBRID 4-DOOR SALOON RANGE.		RDE2 Compliant	Fuel		Transmission	Combined output, PS	CO <sub>2</sub> emission, g/km <sup>1</sup> WLTP test cycle	Basic Recommended Retail £	VAT £	Total Recommended Retail £	Additional 'On the road' Costs £ <sup>2</sup>	Manufacturer's Recommended 'On the road' Retail £ <sup>2</sup>	P11D Value £ <sup>3</sup>	BIK % <sup>4</sup>	ABI Insurance Group <sup>5</sup>
GTE <sup>‡</sup>	1.4 ltr TSI PHEV <sup>‡</sup>	Yes	Hybrid	4-door	6-spd auto DSG	218	24	30,754.17	6,150.83	36,905.00	690.00	37,595.00	37,540.00	7	27E
GTE ADVANCE <sup>‡</sup>	1.4 ltr TSI PHEV <sup>‡</sup>	Yes	Hybrid	4-door	6-spd auto DSG	218	26	32,995.83	6,599.17	39,595.00	690.00	40,285.00	40,230.00	11	29E

<sup>1</sup> Figures for the Volkswagen Passat range, including petrol, diesel and hybrid vehicles. Plug-in hybrid vehicles require mains electricity for charging. Figures for hybrid vehicles were obtained using a combination of battery power and fuel. Figures shown are for comparability purposes; only compare fuel consumption, CO<sub>2</sub> and electric range figures with other vehicles tested to the same technical procedures. These figures may not reflect real life driving results, which will depend upon a number of factors including the accessories fitted (post-registration), variations in weather, driving styles and vehicle load. Data correct at 1.7.2021. For more information, please see [www.volkswagen.co.uk/need-help/wltp](http://www.volkswagen.co.uk/need-help/wltp) or consult your authorised Volkswagen retailer. <sup>2</sup> The recommended 'On the road' prices and any VED charges quoted reflect the VED charges which apply to vehicles registered after 1 April 2021. The price and charges you pay may differ from any prices or charges displayed or quoted before 1 April 2021. For full details of 'First year rate' VED (Vehicle Excise Duty), delivery to retailer, number plates and vehicle first registration fee included in the recommended 'On the road' retail price, [please click here](#) <sup>3</sup> P11D value = Total recommended retail price + delivery to retailer £509.17, + number plates £20, + VAT £105.83 (calculated by reference to total of delivery to retailer + number plates). P11D value is based on standard specification model with no factory-fitted options or other accessories. <sup>4</sup> The BIK charges quoted reflect the charges which apply to vehicles registered after 6 April 2021. These charges may differ from any charges displayed or quoted before 6 April 2021. The BIK % figure quoted includes the 4% diesel supplement, where applicable. Please consult your Volkswagen retailer for full details. <sup>5</sup> The ABI insurance group is the recommended insurance rating set by the Association of British Insurers. Please note that insurance group ratings are purely advisory. They are used by insurers (ABI members and Lloyd's syndicates) as one of the factors in calculating premiums. Insurers are not required to follow the advisory group ratings and they may depart from them if they so wish.

<sup>‡</sup> These vehicles are WLTP (Worldwide Harmonised Light-Duty Vehicles Test Procedure) type approved vehicles. More information is available at [www.volkswagen.co.uk/need-help/wltp](http://www.volkswagen.co.uk/need-help/wltp). SCR (Selective Catalytic Reduction) requires AdBlue®, [please click here](#) or visit [www.volkswagen.co.uk/technology/engines/adblue](http://www.volkswagen.co.uk/technology/engines/adblue) for more details. RDE2 refers to Real Driving Emissions Step 2.

## Volkswagen Service Plan – Retail sales only.

For vehicles under 1 year old set to the Fixed Service regime that has not had its first service, comprising first two manufacturer's scheduled services:

- 'Oil service' including oil filter change
- 'Oil service' including oil filter change and 'Inspection service' plus a pollen filter replacement (if required)

Excludes electric vehicles. Service plan covers first two consecutive services, limited to 1x 'Oil service' and 1x 'Oil and Inspection service'. T&Cs apply: All vehicles must be set to the Fixed Service regime by the retailer. Maximum age of car is 12 months (Service plan must be taken out before first service is due). Additional work, including wear and tear is excluded. Servicing must be carried out in line with the requirement of the Service Schedule. All work must be carried out by an Authorised Volkswagen Repairer. Offers may be varied or withdrawn at any time. Plan validity is dependent on required payments received. Administered by Volkswagen Financial Services. Retail sales only. For pricing and further details, please consult your authorised Volkswagen retailer or visit [www.volkswagen.co.uk](http://www.volkswagen.co.uk)

*Prices, specifications, features, technical and other information (including fuel consumption, CO<sub>2</sub> emissions and range) are updated regularly and are subject to change without notice (this may include changes between order and delivery). There may be a delay in updates to our materials – always consult your authorised Volkswagen retailer for the latest information.*

*Volkswagen UK may change RRP's at any time (this includes where there are government changes in regulation and/or legislation).*

*There may be a delay to any RRP displaying correctly on our materials. Always obtain prices from your chosen authorised Volkswagen retailer.*

VAT IS CALCULATED AT 20%. EFFECTIVE FROM 1 JULY 2021.

The Passat and Passat Estate	Model prices ● ● ● ● ●	Standard equipment	Driver's assistance systems	Infotainment and connectivity	Factory-fitted options	Accessories	Alloy wheels	Paint	Upholstery and decorative inserts	Combinations	Dimensions	AdBlue®	VED and additional 'On the road' costs	Environmental information	CO <sub>2</sub> , BIK % and VED Bands with optional wheels	Company car taxation chart and comparison	Volkswagen service and service plan
------------------------------	---------------------------	--------------------	-----------------------------	-------------------------------	------------------------	-------------	--------------	-------	-----------------------------------	--------------	------------	---------	--	---------------------------	--	---	-------------------------------------



# Model prices – Passat Estate.

5-DOOR ESTATE RANGE.		RDE2 Compliant	Fuel		Transmission	Output, PS	CO <sub>2</sub> emission, g/km <sup>1</sup> WLTP test cycle	Basic Recommended Retail £	VAT £	Total Recommended Retail £	Additional 'On the road' Costs £ <sup>2</sup>	Manufacturer's Recommended 'On the road' Retail £ <sup>2</sup>		P11D Value £ <sup>3</sup>	BIK % <sup>4</sup>	ABI Insurance Group <sup>5</sup>
SE NAV <sup>‡</sup>	1.5 ltr TSI EVO <sup>‡</sup>	Yes	Petrol	5-door	6-spd manual	150	143	24,266.67	4,853.33	29,120.00	910.00	30,030.00		29,755.00	32	20E
	1.5 ltr TSI EVO <sup>‡</sup>	Yes	Petrol	5-door	7-spd auto DSG	150	146	25,600.00	5,120.00	30,720.00	910.00	31,630.00		31,355.00	33	20E
	2.0 ltr TDI EVO SCR <sup>‡</sup>	Yes	Diesel	5-door	7-spd auto DSG	122	127	26,508.33	5,301.67	31,810.00	870.00	32,680.00		32,445.00	29	16E
	2.0 ltr TDI EVO SCR <sup>‡</sup>	Yes	Diesel	5-door	6-spd manual	150	127	26,258.33	5,251.67	31,510.00	870.00	32,380.00		32,145.00	29	20E
	2.0 ltr TDI EVO SCR <sup>‡</sup>	Yes	Diesel	5-door	7-spd auto DSG	150	127	27,591.67	5,518.33	33,110.00	870.00	33,980.00		33,745.00	29	22E

1 Figures for the Volkswagen Passat range, including petrol, diesel and hybrid vehicles. Plug-in hybrid vehicles require mains electricity for charging. Figures for hybrid vehicles were obtained using a combination of battery power and fuel. Figures shown are for comparability purposes; only compare fuel consumption, CO<sub>2</sub> and electric range figures with other vehicles tested to the same technical procedures. These figures may not reflect real life driving results, which will depend upon a number of factors including the accessories fitted (post-registration), variations in weather, driving styles and vehicle load. Data correct at 1.7.2021. For more information, please see [www.volkswagen.co.uk/need-help/wltp](#) or consult your authorised Volkswagen retailer. 2 The recommended 'On the road' prices and any VED charges quoted reflect the VED charges which apply to vehicles registered after 1 April 2021. The price and charges you pay may differ from any prices or charges displayed or quoted before 1 April 2021. For full details of 'First year rate' VED (Vehicle Excise Duty), delivery to retailer, number plates and vehicle first registration fee included in the recommended 'On the road' retail price, [please click here](#) 3 P11D value = Total recommended retail price + delivery to retailer £509.17, + number plates £20, + VAT £105.83 (calculated by reference to total of delivery to retailer + number plates). P11D value is based on standard specification model with no factory-fitted options or other accessories. 4 The BIK charges quoted reflect the charges which apply to vehicles registered after 6 April 2021. These charges may differ from any charges displayed or quoted before 6 April 2021. The BIK % figure quoted includes the 4% diesel supplement, where applicable. Please consult your Volkswagen retailer for full details. 5 The ABI insurance group is the recommended insurance rating set by the Association of British Insurers. Please note that insurance group ratings are purely advisory. They are used by insurers (ABI members and Lloyd's syndicates) as one of the factors in calculating premiums. Insurers are not required to follow the advisory group ratings and they may depart from them if they so wish. <sup>‡</sup> These vehicles are WLTP (Worldwide Harmonised Light-Duty Vehicles Test Procedure) type approved vehicles. More information is available at [www.volkswagen.co.uk/need-help/wltp](#). <sup>†</sup> Please note these models may no longer be available to order, or only be available from stock and not available to factory order. SCR (Selective Catalytic Reduction) requires AdBlue®, [please click here](#) or visit [www.volkswagen.co.uk/technology/engines/adblue](#) for more details. RDE2 refers to Real Driving Emissions Step 2.

# Volkswagen Service Plan – Retail sales only.

For vehicles under 1 year old set to the Fixed Service regime that has not had its first service, comprising first two manufacturer’s scheduled services:

– ‘Oil service’ including oil filter change

– ‘Oil service’ including oil filter change and 'Inspection service' plus a pollen filter replacement (if required)

Excludes electric vehicles. Service plan covers first two consecutive services, limited to 1x ‘Oil service’ and 1x ‘Oil and Inspection service’. T&Cs apply: All vehicles must be set to the Fixed Service regime by the retailer. Maximum age of car is 12 months (Service plan must be taken out before first service is due). Additional work, including wear and tear is excluded. Servicing must be carried out in line with the requirement of the Service Schedule. All work must be carried out by an Authorised Volkswagen Repairer. Offers may be varied or withdrawn at any time. Plan validity is dependent on required payments received. Administered by Volkswagen Financial Services. Retail sales only. For pricing and further details, please consult your authorised Volkswagen retailer or visit [www.volkswagen.co.uk](#)

*Prices, specifications, features, technical and other information (including fuel consumption, CO<sub>2</sub> emissions and range) are updated regularly and are subject to change without notice (this may include changes between order and delivery). There may be a delay in updates to our materials – always consult your authorised Volkswagen retailer for the latest information.*

*Volkswagen UK may change RRP's at any time (this includes where there are government changes in regulation and/or legislation). There may be a delay to any RRP displaying correctly on our materials. Always obtain prices from your chosen authorised Volkswagen retailer.*

VAT IS CALCULATED AT 20%. EFFECTIVE FROM 1 JULY 2021.



# Model prices – Passat Estate.

5-DOOR ESTATE RANGE.		RDE2 Compliant	Fuel		Transmission	Output, PS	CO <sub>2</sub> emission, g/km <sup>1</sup> WLTP test cycle	Basic Recommended Retail £	VAT £	Total Recommended Retail £	Additional 'On the road' Costs £ <sup>2</sup>	Manufacturer's Recommended 'On the road' Retail £ <sup>2</sup>	P11D Value £ <sup>3</sup>	BIK % <sup>4</sup>	ABI Insurance Group <sup>5</sup>
SEL <sup>‡</sup>	1.5 ltr TSI EVO <sup>‡</sup>	Yes	Petrol	5-door	6-spd manual	150	143	24,795.83	4,959.17	29,755.00	910.00	30,665.00	30,390.00	32	20E
	1.5 ltr TSI EVO <sup>‡</sup>	Yes	Petrol	5-door	7-spd auto DSG	150	146	26,129.17	5,225.83	31,355.00	910.00	32,265.00	31,990.00	33	20E
	2.0 ltr TDI EVO SCR <sup>‡</sup>	Yes	Diesel	5-door	7-spd auto DSG	122	128	27,037.50	5,407.50	32,445.00	870.00	33,315.00	33,080.00	29	16E
	2.0 ltr TDI EVO SCR <sup>‡</sup>	Yes	Diesel	5-door	6-spd manual	150	128	26,787.50	5,357.50	32,145.00	870.00	33,015.00	32,780.00	29	21E
	2.0 ltr TDI EVO SCR <sup>‡</sup>	Yes	Diesel	5-door	7-spd auto DSG	150	127	28,120.83	5,624.17	33,745.00	870.00	34,615.00	34,380.00	29	22E
R-LINE <sup>‡</sup>	1.5 ltr TSI EVO <sup>‡</sup>	Yes	Petrol	5-door	6-spd manual	150	146	27,187.50	5,437.50	32,625.00	910.00	33,535.00	33,260.00	33	21E
	1.5 ltr TSI EVO <sup>‡</sup>	Yes	Petrol	5-door	7-spd auto DSG	150	150	28,520.83	5,704.17	34,225.00	910.00	35,135.00	34,860.00	34	21E
	2.0 ltr TDI EVO SCR <sup>‡</sup>	Yes	Diesel	5-door	6-spd manual	150	131	29,179.17	5,835.83	35,015.00	910.00	35,925.00	35,650.00	30	21E
	2.0 ltr TDI EVO SCR <sup>‡</sup>	Yes	Diesel	5-door	7-spd auto DSG	150	131	30,512.50	6,102.50	36,615.00	910.00	37,525.00	37,250.00	30	22E
	2.0 ltr TDI SCR <sup>‡</sup>	Yes	Diesel	5-door	7-spd auto DSG	200	142	31,762.50	6,352.50	38,115.00	910.00	39,025.00	38,750.00	32	26E

1 Figures for the Volkswagen Passat range, including petrol, diesel and hybrid vehicles. Plug-in hybrid vehicles require mains electricity for charging. Figures for hybrid vehicles were obtained using a combination of battery power and fuel. Figures shown are for comparability purposes; only compare fuel consumption, CO<sub>2</sub> and electric range figures with other vehicles tested to the same technical procedures. These figures may not reflect real life driving results, which will depend upon a number of factors including the accessories fitted (post-registration), variations in weather, driving styles and vehicle load. Data correct at 1.7.2021. For more information, please see [www.volkswagen.co.uk/need-help/wltp](#) or consult your authorised Volkswagen retailer. 2 The recommended 'On the road' prices and any VED charges quoted reflect the VED charges which apply to vehicles registered after 1 April 2021. The price and charges you pay may differ from any prices or charges displayed or quoted before 1 April 2021. For full details of 'First year rate' VED (Vehicle Excise Duty), delivery to retailer, number plates and vehicle first registration fee included in the recommended 'On the road' retail price, [please click here](#) 3 P11D value = Total recommended retail price + delivery to retailer £509.17, + number plates £20, + VAT £105.83 (calculated by reference to total of delivery to retailer + number plates). P11D value is based on standard specification model with no factory-fitted options or other accessories. 4 The BIK charges quoted reflect the charges which apply to vehicles registered after 6 April 2021. These charges may differ from any charges displayed or quoted before 6 April 2021. The BIK % figure quoted includes the 4% diesel supplement, where applicable. Please consult your Volkswagen retailer for full details. 5 The ABI insurance group is the recommended insurance rating set by the Association of British Insurers. Please note that insurance group ratings are purely advisory. They are used by insurers (ABI members and Lloyd's syndicates) as one of the factors in calculating premiums. Insurers are not required to follow the advisory group ratings and they may depart from them if they so wish.

<sup>‡</sup> These vehicles are WLTP (Worldwide Harmonised Light-Duty Vehicles Test Procedure) type approved vehicles. More information is available at [www.volkswagen.co.uk/need-help/wltp](#). SCR (Selective Catalytic Reduction) requires AdBlue®, [please click here](#) or visit [www.volkswagen.co.uk/technology/engines/adblue](#) for more details.

RDE2 refers to Real Driving Emissions Step 2

Prices, specifications, features, technical and other information (including fuel consumption, CO<sub>2</sub> emissions and range) are updated regularly and are subject to change without notice (this may include changes between order and delivery). There may be a delay in updates to our materials – always consult your authorised Volkswagen retailer for the latest information.

Volkswagen UK may change RRP's at any time (this includes where there are government changes in regulation and/or legislation).

There may be a delay to any RRP displaying correctly on our materials. Always obtain prices from your chosen authorised Volkswagen retailer.

VAT IS CALCULATED AT 20%. EFFECTIVE FROM 1 JULY 2021.



# Model prices – Passat Estate.

PETROL/ELECTRIC HYBRID 5-DOOR ESTATE RANGE.		RDE2 Compliant	Fuel		Transmission	Combined output, PS	CO <sub>2</sub> emission, g/km <sup>1</sup> WLTP test cycle	Basic Recommended Retail £	VAT £	Total Recommended Retail £	Additional 'On the road' Costs £ <sup>2</sup>	Manufacturer's Recommended 'On the road' Retail £ <sup>2</sup>		P11D Value £ <sup>3</sup>	BIK % <sup>4</sup>	ABI Insurance Group <sup>5</sup>
GTE ‡	1.4 ltr TSI PHEV ‡	Yes	Hybrid	5-door	6-spd auto DSG	218	26	32,416.67	6,483.33	38,900.00	690.00	39,590.00		39,535.00	11	27E
GTE ADVANCE ‡	1.4 ltr TSI PHEV ‡	Yes	Hybrid	5-door	6-spd auto DSG	218	28	34,658.33	6,931.67	41,590.00	690.00	42,280.00		42,225.00	11	29E

1 Figures for the Volkswagen Passat range, including petrol, diesel and hybrid vehicles. Plug-in hybrid vehicles require mains electricity for charging. Figures for hybrid vehicles were obtained using a combination of battery power and fuel. Figures shown are for comparability purposes; only compare fuel consumption, CO<sub>2</sub> and electric range figures with other vehicles tested to the same technical procedures. These figures may not reflect real life driving results, which will depend upon a number of factors including the accessories fitted (post-registration), variations in weather, driving styles and vehicle load. Data correct at 1.7.2021. For more information, please see [www.volkswagen.co.uk/need-help/wltp](#) or consult your authorised Volkswagen retailer. 2 The recommended 'On the road' prices and any VED charges quoted reflect the VED charges which apply to vehicles registered after 1 April 2021. The price and charges you pay may differ from any prices or charges displayed or quoted before 1 April 2021. For full details of 'First year rate' VED (Vehicle Excise Duty), delivery to retailer, number plates and vehicle first registration fee included in the recommended 'On the road' retail price, [please click here](#) 3 P11D value = Total recommended retail price + delivery to retailer £509.17, + number plates £20, + VAT £105.83 (calculated by reference to total of delivery to retailer + number plates). P11D value is based on standard specification model with no factory-fitted options or other accessories. 4 The BIK charges quoted reflect the charges which apply to vehicles registered after 6 April 2021. These charges may differ from any charges displayed or quoted before 6 April 2021. The BIK % figure quoted includes the 4% diesel supplement, where applicable. Please consult your Volkswagen retailer for full details. 5 The ABI insurance group is the recommended insurance rating set by the Association of British Insurers. Please note that insurance group ratings are purely advisory. They are used by insurers (ABI members and Lloyd's syndicates) as one of the factors in calculating premiums. Insurers are not required to follow the advisory group ratings and they may depart from them if they so wish. ‡ These vehicles are WLTP (Worldwide Harmonised Light-Duty Vehicles Test Procedure) type approved vehicles. More information is available at [www.volkswagen.co.uk/need-help/wltp](#). SCR (Selective Catalytic Reduction) requires AdBlue®, [please click here](#) or visit [www.volkswagen.co.uk/technology/engines/adblue](#) for more details. RDE2 refers to Real Driving Emissions Step 2.

# Volkswagen Service Plan – Retail sales only.

For vehicles under 1 year old set to the Fixed Service regime that has not had its first service, comprising first two manufacturer’s scheduled services:

– ‘Oil service’ including oil filter change

– ‘Oil service’ including oil filter change and 'Inspection service' plus a pollen filter replacement (if required)

Excludes electric vehicles. Service plan covers first two consecutive services, limited to 1x ‘Oil service’ and 1x ‘Oil and Inspection service’. T&Cs apply: All vehicles must be set to the Fixed Service regime by the retailer. Maximum age of car is 12 months (Service plan must be taken out before first service is due). Additional work, including wear and tear is excluded. Servicing must be carried out in line with the requirement of the Service Schedule. All work must be carried out by an Authorised Volkswagen Repairer. Offers may be varied or withdrawn at any time. Plan validity is dependent on required payments received. Administered by Volkswagen Financial Services. Retail sales only. For pricing and further details, please consult your authorised Volkswagen retailer or visit [www.volkswagen.co.uk](#)

*Prices, specifications, features, technical and other information (including fuel consumption, CO<sub>2</sub> emissions and range) are updated regularly and are subject to change without notice (this may include changes between order and delivery). There may be a delay in updates to our materials – always consult your authorised Volkswagen retailer for the latest information.*

*Volkswagen UK may change RRP's at any time (this includes where there are government changes in regulation and/or legislation). There may be a delay to any RRP displaying correctly on our materials. Always obtain prices from your chosen authorised Volkswagen retailer.*

VAT IS CALCULATED AT 20%. EFFECTIVE FROM 1 JULY 2021.



# Standard items of equipment: SE Nav.

VOLKSWAGEN SERVICE	INTERIOR	INTERIOR (CONTINUED)	IN-CAR ENTERTAINMENT AND COMMUNICATIONS (CONTINUED)
3-year/60,000 miles warranty (whichever is soonest)	Carpet mats, front and rear	Storage compartment in roof console with cover	– 1 x USB-C connection, USB charging socket (compatible products only)
3-year paintwork warranty	‘Cross Hatch’ decorative inserts in dash, centre console and door panels	Storage compartments in front passenger’s door for 1.5 litre bottle	– 4 x 20 watt output
12-year body protection warranty	Chrome-plated instrument and air vent surrounds	Storage compartment in rear doors	– 6 speakers, front and rear
Volkswagen Roadside Assistance	Cup holders with covers, front x 2	Vanity mirrors, illuminated	– 2D/3D map view
Exclusions and terms apply, <a href="#">please click here</a> for more details	Extending luggage compartment cover, stowable (Estate only)	Variable boot floor, height adjustable and removable (Estate only)	Premium USB-C cable (choice of either Apple or Android smartphone compatibility)
WHEELS AND SUSPENSION	Front centre armrest with storage compartment and two rear air vents	White instrument lighting	‘App-Connect’ <sup>3</sup>
Alloy wheels, four 7J x 17" ‘Istanbul’ with 215/55 R17 low rolling resistance tyres and anti-theft wheel bolts	Glovebox, cooled, illuminated and lockable	12V socket in front centre console	– Combines the functionality of Apple ‘CarPlay’, Google ‘Android Auto’ and ‘MirrorLink’™ allowing ‘mirroring’ of smartphone display on the infotainment touch-screen
Tyre mobility kit and compressor	Height and reach adjustable steering wheel	12V socket in luggage compartment	– Wireless connection for Apple ‘CarPlay’
EXTERIOR	Interior lighting: front and rear with interior delay and dimming function	IN-CAR ENTERTAINMENT AND COMMUNICATIONS	– USB-C connection for Google ‘Android Auto’ and ‘MirrorLink’™
All LED headlights range adjustable with reflector technology. Including 12 separate LED daytime running lights which also perform the indicator function	Leather trimmed three-spoke multifunction steering wheel and gear knob	Aerial integrated into rear windscreen	
Black radiator grille with chrome louvres	LED entrance/warning lights in front doors	Discover Media Navigation infotainment system	
Body-coloured bumpers	Load lashing points x 4, in luggage compartment	– 8" colour touch-screen with natural, intuitive, touch-sensitive functionality	<b>WE CONNECT PLUS®</b>
Body-coloured door handles	Load sill protection – plastic (Estate only)	– Bluetooth telephone and audio connection for compatible devices <sup>1</sup>	We Connect Plus preparation <sup>4, 5</sup>
Body-coloured door mirrors with integrated indicators	Load-through provision	– Branded points of interest	– Driver and vehicle integration via We Connect Portal or We Connect app
Chrome-plated side window surrounds	Luggage compartment light	– Car information display	– Driver and vehicle integration with Volkswagen call centre or server for: ‘eCall’– Emergency call service for SOS calls to emergency response
Exterior temperature gauge and frost warning function	Reading lights, front and rear x 2 incorporating LED technology	– Dynamic guidance via We Connect Plus online traffic information	– Provides continuous interaction between the driver, vehicle and Volkswagen, via integrated SIM-card connectivity
Front fog lights with static cornering function and chrome trimmed surround	Seating	– In-Car shop: Purchase additional services i.e. We Connect contract extensions or upgrade to navigation services after vehicle purchase	– Navigation based services for: Online voice control, Online traffic information, Online route calculations and Online destination import. Petrol station, Charging point and Parking locations. Online map updates
Galvanised body	– Upholstery – ‘Django’ cloth	– Integrated SIM-card	– Streaming and internet based services <sup>6</sup> for: Internet radio, Wi-Fi hotspot and Media streaming <sup>4</sup>
‘Gloss Black’ B-pillar trim	– Driver’s and front passenger’s seat height adjustment	– MDI (Multi Device Interface), via USB-C connection – compatible products only	– Vehicle based services for: Car breakdown call, Vehicle status, Doors and lights, Automatic accident notification, Vehicle health report, Driving data, Parking position, Service schedule, Area alert, Speed alert, Horn and indicators, Online anti-theft alarm, Lock & unlock <sup>7</sup>
Rear lights incorporating LED technology	– Front seats with lumbar adjustment	– Preloaded European navigation data	
Rear number plate lights incorporating LED technology	– ergoComfort driver’s seat with seat cushion tilt adjustment, thigh support and electric backrest adjustment	– Simultaneous pairing of 2 compatible mobile devices	
Rear windscreen wash/wipe (Estate only)	Rear seat centre armrest with storage compartment	– SMS functionality – read, compose and send SMS messages using touch-screen display (when stationary, compatible Android smartphones only)	
Roof rails, black (Estate only)	Split folding rear seat backrests 60:40 (Saloon)	– Speed Limit Display <sup>2</sup>	
Windscreen wipers with intermittent operation	Split folding rear seat backrest 40:20:40 (Estate)	– Three route options (Fast, Short, Eco)	
	Storage compartment in driver’s door for 1.0 litre bottle	– Title and cover art display	



- 1 Devices must be Bluetooth HFP (Hands Free Profile) compatible, please contact your authorised Volkswagen retailer for specific phone compatibility.
- 2 Speed Limit Display only reflects national speed limits and does not show temporary speed limit restrictions, or where permanent changes to speed limits are made in-between map updates.
- 3 Only operable in conjunction with compatible tablets and smartphones including iPhone 5 and above. Please see [www.volkswagen.co.uk](#) to check compatibility.
- 4 To use the free We Connect app you will need a smartphone with iOS or Android operating system and a SIM-card with a data option. Depending on your mobile tariff, sending and receiving data online may incur additional charges (e.g. roaming charges), particularly if you are using We Connect abroad. For more information on We Connect services, go to [www.myvolkswagen.net](#) or contact your Volkswagen retailer.
- 5 We Connect Plus services are accessed via a compatible mobile device. Please see [www.myvolkswagen.net](#) for more information. The use of We Connect Plus entails exchanging large volumes of data. As such, we strongly recommend that you sign-up for a flat rate data plan with your mobile network provider. Information on the duration of We Connect Plus services can be obtained once a user account has been registered on the myVolkswagen web portal.
- 6 For the use of the Streaming and Internet based services and for the Wi-Fi hotspot, data packages can be purchased from Cubic Telecom, our mobile communications partner and used in the network coverage area within many European countries. You can find information on prices and supported countries at [www.vw.cubictelecom.com](#)
- 7 Lock & unlock service is a secure service and requires that your identity be verified via the Volkswagen Ident process. Your identity will be verified by a Volkswagen retailer or via video chat.

**For detailed information regarding tyre efficiency labelling and technical specifications on all potential tyre fitments, visit the Volkswagen online car configurator at [www.volkswagen.co.uk](#) or consult your authorised Volkswagen retailer.**

The specifications listed are for information purposes only as our products are continually updated and changes may be made to the specifications at any time. If you require any specific feature, please consult your authorised Volkswagen retailer who is regularly updated with any change in specification. Specifications are subject to change without notice.



# Standard items of equipment: SE Nav (continued).

SAFETY AND SECURITY
ABS (Anti-lock Braking System) – includes BAS (Brake Assist System) and EBD (Electronic Brake-pressure Distribution)
Airbags
– Curtain airbag system, for front and rear passengers, including front side impact airbag
– Driver's and front passenger's airbags with front passenger's airbag deactivation switch
– Driver's knee airbag
– Rear seat side impact airbags, outer
Alarm with interior protection, with deactivation via infotainment system
Automatic leaving home and manual coming home lighting functions
Automatic Post-Collision Braking System
Disc brakes, front and rear
Driver's and front passenger's safety-optimised head restraints, longitudinal and height adjustable
Electronic engine immobiliser
ESC (Electronic Stability Control) – includes EDL (Electronic Differential Lock) and ASR (Traction Control), EDTC (Engine Drag Torque Control) and trailer stabilisation function
First aid kit
Front head restraints with longitudinal and height adjustment
Height-adjustable front three-point seat belts with tensioners
High level 3rd brake light
Isofix child seat preparation, outer rear seats
Misfuel prevention device
PreCrash preventive occupant protection
Proactive occupant protection – using sensors from the Front Assist monitoring system to detect critical situations with elevated accident potential from the front
Remote central locking with 2 remote keys
Rigid safety cell with front and rear crumple zones
Tyre pressure loss indicator

SAFETY AND SECURITY (CONTINUED)
Warning buzzer and light for front seat belts if unfastened
Warning light for rear seat belts if unfastened
Warning lights for open boot lid or tailgate and doors
Warning reflector in all doors
3 rear head restraints, height adjustable
3 rear three-point seat belts

COMFORT AND CONVENIENCE
Air conditioning, manual
Automatic dimming interior rear-view mirror
Automatic headlights on
Electric windows, front and rear
Electrically heated and adjustable door mirrors
Heated rear window
One-touch indicator turn signal
Rain sensor

DRIVER'S ASSISTANCE
Adaptive Cruise Control (ACC), including Front Assist, radar sensor controlled distance monitoring system, City emergency braking system, cruise control and speed limiter
Battery regeneration (recuperation – energy recovery during braking)
Driver Alert system
Driver profile selection, personalisation:
– Wing mirrors
– Map and route settings
– Radio stations
– Air conditioning
– Central locking and windows
– Interior lighting
Dusk sensor, automatic driving lights
Hill hold function
Electronic parking brake – with auto hold function

DRIVER'S ASSISTANCE (CONTINUED)
Multifunction computer with colour display, includes visual gear change recommendation for improved fuel consumption (not GTE Advance)
Lane Assist
Parking sensors, front and rear – ultrasonic, audible with audio volume reduction when activated and optical parking display via vehicle's infotainment system
Power-assisted steering, speed-sensitive
Remote boot or tailgate unlocking
Speedo and rev counter, electronic odometer, trip, service interval display and fuel gauge
Start/Stop function
Traffic Jam Assist
Warning light for low washer fluid









## WHEELS AND SUSPENSION

Sports suspension, lowered

## EXTERIOR

## INTERIOR

'Dark Diamond Flag' decorative inserts in dash and door panels

## Seating

- Upholstery – 'Nappa' leather<sup>2</sup> and 'Carbon Optic' side bolsters
- Front seats with embroidered 'R-Line' logo on backrest

Unique 'R-Line' carpet mats, front and rear

Unique 'R-Line' door sill protectors

## COMFORT AND CONVENIENCE

'Easy open' full electric tailgate opening and closing function, operated via foot movement under rear or from driver's door

Keyless entry, including Start/Stop button



**Model shown is Passat R-Line with optional 'IQ. Light' LED matrix headlights, 19" 'Pretoria' Dark Graphite alloy wheels and metallic signature paint.**

2 Some parts of leather interior will contain artificial leather.

The specifications listed are for information purposes only as our products are continually updated and changes may be made to the specifications at any time.

The specifications listed are for information purposes only as our products are continually updated and changes may be made to the specifications at any time. If you require any specific feature, please consult your authorised Volkswagen retailer who is regularly updated with any change in specification. Specifications are subject to change without notice.



## Additional items of standard equipment: GTE (over SEL).

### EXTERIOR

'Blue' brake callipers

Charging point inlet on radiator grille

Trapezoid exhaust tailpipes,  
left and right

Unique 'C' signature GTE front LED  
daytime running lights in bumper  
(in lieu of front fog lights)

Unique 'GTE' badging

Unique 'GTE' radiator grille with  
blue strip



### INTERIOR

Blue ambient lighting

Leather trimmed gear knob gaiter  
with blue contrast stitching

Unique 'GTE' instrument cluster

### COMFORT AND CONVENIENCE

Climate control – 3Zone electronic  
air conditioning with automatic air  
recirculation

### ELECTRIC

Two 6 metre charging cables – 16amp AC  
cable for wallbox/chargepoints (mode 3)  
and 10amp mains charge cable (mode 2)

Socket AC type 2

### DRIVER'S ASSISTANCE

Driver profile selection

– e-mode

– Hybrid mode

– Battery charge mode

– Battery hold mode

– 'GTE' mode

'e-sound', exterior sound generator  
without deactivation



Model shown is Passat Estate GTE with optional 'IQ. Light' LED matrix headlights.

For detailed information regarding tyre efficiency labelling and technical specifications on all potential tyre fitments, visit the Volkswagen online car configurator at [www.volkswagen.co.uk](http://www.volkswagen.co.uk) or consult your authorised Volkswagen retailer.

The specifications listed are for information purposes only as our products are continually updated and changes may be made to the specifications at any time. If you require any specific feature, please consult your authorised Volkswagen retailer who is regularly updated with any change in specification. Specifications are subject to change without notice.





- 'Gesture control'
- Voice activated control system for telephone and navigation functions
- 3D map view

Keyless entry, including Start/Stop button

- 10.25" high resolution TFT dash display screen with customisable menus and information (in lieu of multifunction colour computer)

Alloy wheels, four 8J x 18" 'Monterrey'  
Grey Metallic with 235/45 R18 low  
rolling resistance tyres and anti-theft  
wheel bolts

- 'IQ. Light' LED matrix headlights
  - All LED interactive matrix dipped and main beam headlights, daytime running lights, Including dual 'U-shaped' LED daytime running lights
  - 12 separate LED lights which perform the indicator function and Dynamic curve lighting
  - Information from the front camera, navigation's digital map data, GPS information, steering wheel angle and current driving speed activates specific LEDs individually for optimal lighting
  - Includes specific lighting functions for: city lighting, motorway lighting, motorway dipped beam, poor weather light and sign glare reduction



The specifications listed are for information purposes only as our products are continually updated and changes may be made to the specifications at any time. If you require any specific feature, please consult your authorised Volkswagen retailer who is regularly updated with any change in specification. Specifications are subject to change without notice.



# Driver's assistance systems.

Good assistants are usually hard to find. It's different in the Passat. Here you will find numerous intelligent driver assistance systems which are grouped at Volkswagen under the name IQ.Drive. IQ.Drive stands for all assistance systems that already exist today and that we are developing for tomorrow and the future. In the Passat you can benefit from innovative features such as 'Traffic Jam Assist', 'Emergency Assist' and many more.



**01** Whether on business or leisure travel, if you travel frequently, the Traffic Jam Assist system offers you assistance from motorways to city congestion traffic. **Traffic Jam Assist** can take into account the distance to the traffic ahead and adjust the speed accordingly. In conjunction with the DSG dual clutch transmission, you can even drive relaxed through traffic jams and stop-and-go traffic. It detects if traffic is stopping and slows your vehicle to a standstill if necessary. Once the car in front pulls away, the system recognises this and sets the vehicle in motion. Standard on all models in conjunction with the DSG gearbox.



**02 Emergency Assist** can help even further should a driver medical emergency situation arise. In conjunction with the DSG gearbox, the system recognises an incapacity of the driver and slows the car down in its lane to a standstill if necessary. As soon as the system cannot detect any steering, braking or acceleration activity, it alerts the driver. If the driver remains inactive, it automatically activates the hazard warning lights to alert other road users. Standard on all models in conjunction with the DSG gearbox.



**03 Adaptive Cruise Control (ACC)** is a radar sensor controlled distance monitoring system that utilises a front mounted camera to set a distance to the vehicle in front and maintain it up to a predetermined set speed by automatically accelerating and braking as necessary. The system adds speed and cornering assistance by using information from the vehicle's navigation system if fitted. Standard on all models.

Models shown are Passat Estate R-Line with optional 19" 'Pretoria' Dark Graphite alloy wheels, panoramic sunroof and metallic signature paint. Image 02 is Passat Estate R-Line with optional 'IQ. Light' LED matrix headlights, 19" 'Pretoria' Dark Graphite alloy wheels, panoramic sunroof and metallic signature paint.

*Please note: The intelligent technology of Adaptive Cruise Control (ACC) with predictive cruise control cannot overcome the laws of physics and functions only within the limits of the system. It is the driver's responsibility to have full concentration and control of the vehicle, as well as ensuring appropriate speeds by observing the maximum speed limits and road positioning of the car at all times.*

The Passat and Passat Estate	Model prices	Standard equipment	<b>Driver's assistance systems</b>	Infotainment and connectivity	Factory-fitted options	Accessories	Alloy wheels	Paint	Upholstery and decorative inserts	Combinations	Dimensions	AdBlue®	VED and additional 'On the road' costs	Environmental information	CO <sub>2</sub> , BIK % and VED Bands with optional wheels	Company car taxation chart and comparison	Volkswagen service and service plan
------------------------------	--------------	--------------------	------------------------------------	-------------------------------	------------------------	-------------	--------------	-------	-----------------------------------	--------------	------------	---------	--	---------------------------	--	---	-------------------------------------





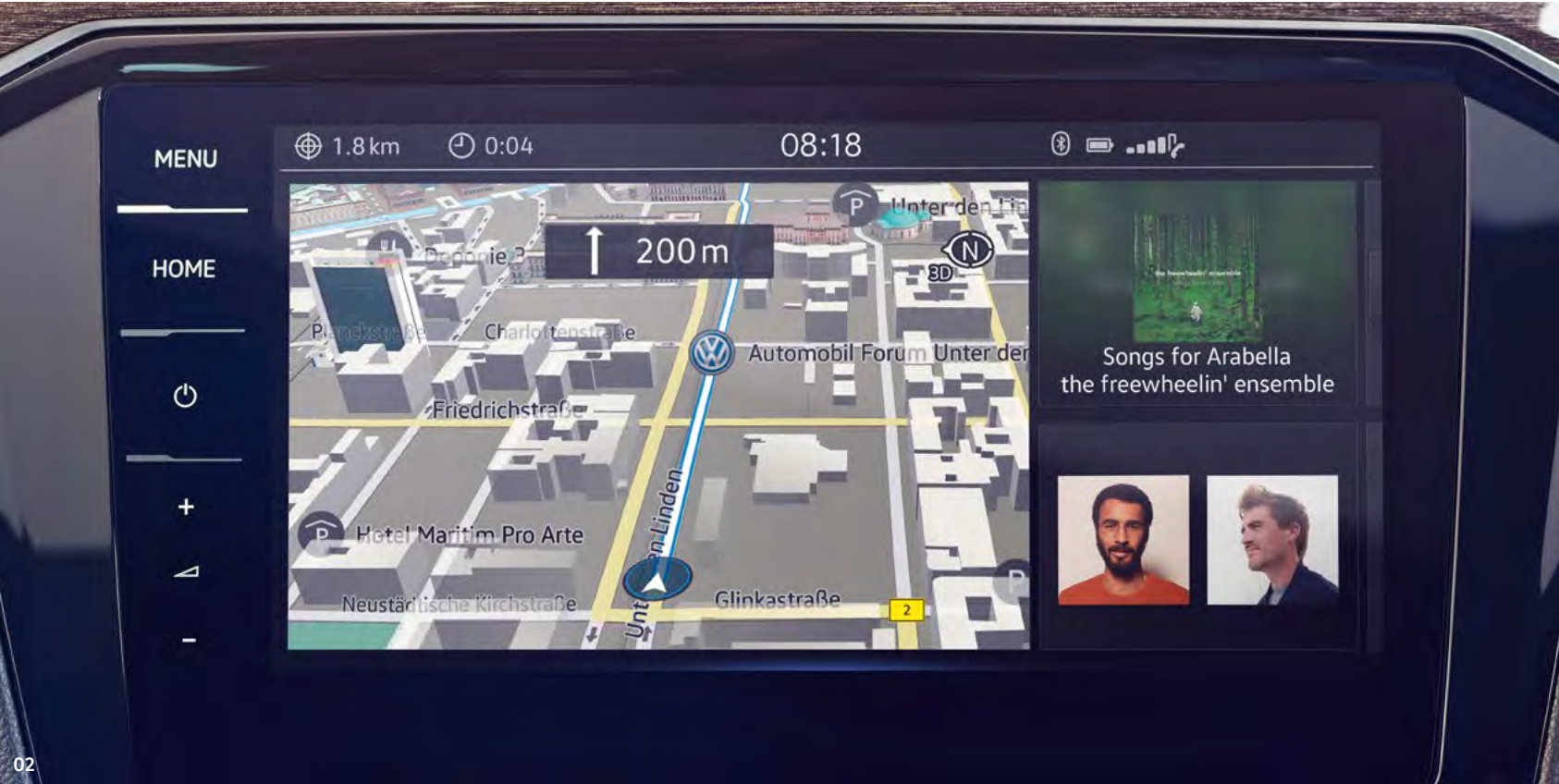


**01 The Discover Media Navigation infotainment system with We Connect Plus preparation**<sup>1,2</sup> has impressive features which enable you to easily manage not only your music, but also navigation data and a broad range of vehicle information. The system offers preloaded European navigation data, 2D/3D map view which can be easily followed on the 8.0 inch colour touch-screen, three calculated route choices (Fast, Short and Eco) and dynamic guidance via We Connect Plus online traffic information. The system also offers branded points of interest and Speed Limit Display<sup>3</sup>. We Connect Plus preparation provides streaming and internet based services<sup>4</sup> for Internet radio, Wi-Fi hotspot and Media streaming with navigation based services for Online voice control, Online traffic information, Online route calculations and Online destination import. It also includes vehicle based services for Area alert, Speed alert, Horn and indicators, Online anti-theft alarm and Lock & unlock<sup>5</sup>. The infotainment system also includes a DAB digital radio receiver, MDI (Multi Device Interface) via USB-C connection – compatible products only and title and cover art display. Connection for Bluetooth telephone and audio compatible devices<sup>6</sup> are available, along with simultaneous pairing of two compatible mobile devices and SMS functionality – allowing you to read, compose and send SMS messages using the touch-screen display when the vehicle is stationary (compatible Android smartphones only). Standard on SE Nav, SEL, R-Line and GTE models.

**02 The Discover Navigation Pro touch-screen navigation infotainment system with integrated voice activation, 'Gesture Control' and We Connect Plus preparation**<sup>1</sup> including Digital key and wireless smartphone charger and Active Info Display builds upon the impressive Discover Media Navigation infotainment system, but with additional features such as integrated voice activation, which responds to spoken voice commands for navigation and telephone functions, and 'Gesture Control' for use with various different menus, responds to a sideways swiping gesture and confirms a successful swipe with a sound effect, which can be deactivated if required. The **Active Info Display**<sup>7</sup> provides a system that can be tailored to suit your exact preferences. The fully configurable, interactive 10.25 inch TFT display replaces the standard analogue instrument cluster, displaying vehicle data and information on your dashboard. Five different modes allow you to customise the screen, with large or small dials as you prefer and a number of items displayed behind. When used in navigation mode you can move the speedometer and rev counter to the edge of the display, creating more space for the navigational map. If you wish, you are able to include driving, navigation and assistance functions within the graphics of the speedometer. As the Active Info Display is linked to all other assistance systems in the vehicle, any data shown in the centre console of the infotainment system, such as phone numbers or your music's compatible cover art, can also be displayed on the dash conveniently placed directly within the driver's optimum field of vision. Finally, a digital key<sup>8</sup> allows you to securely lock and unlock your car using a compatible smartphone, while the inductive charger<sup>8</sup> ensures your smartphone is always charged. Optional on SEL, R-Line and GTE models. The Discover Navigation Pro is standard on GTE Advance models, but does not include digital key or inductive smartphone charging.



- 1 To use the free We Connect app you will need a smartphone with iOS or Android operating system and a SIM-card with a data option. Depending on your mobile tariff, sending and receiving data online may incur additional charges (e.g. roaming charges), particularly if you are using We Connect abroad. For more information on We Connect services, go to [www.myvolkswagen.net](http://www.myvolkswagen.net) or contact your Volkswagen retailer.
- 2 We Connect Plus services are accessed via a compatible mobile device. Please see [www.myvolkswagen.net](http://www.myvolkswagen.net) for more information. The use of We Connect Plus entails exchanging large volumes of data. As such, we strongly recommend that you sign-up for a flat rate data plan with your mobile network provider. Information on the duration of We Connect Plus services can be obtained once a user account has been registered on the We Connect web portal.
- 3 Speed Limit Display only reflects national speed limits and does not show temporary speed limit restrictions, or where permanent changes to speed limits are made in-between map updates.
- 4 For the use of the Streaming and Internet based services and for the Wi-Fi hotspot, data packages can be purchased from Cubic Telecom, our mobile communications partner and used in the network coverage area within many European countries. You can find information on prices and supported countries at [www.vw.cubictelcom.com](http://www.vw.cubictelcom.com)
- 5 Lock & unlock service is a secure service and requires that your identity be verified via the Volkswagen Ident process. Your identity will be verified by a Volkswagen retailer or via video chat.
- 6 Devices must be Bluetooth HFP (Hands Free Profile) compatible, please contact your authorised Volkswagen retailer for specific phone compatibility.
- 7 In lieu of multifunction colour computer.
- 8 Contact your authorised Volkswagen retailer for specific phone compatibility.





## WHEELS AND SUSPENSION

1 Not in conjunction with steel space saver spare wheel.

*For detailed information regarding tyre efficiency labelling and technical specifications on all potential tyre fitments, visit the Volkswagen online car configurator at [www.volkswagen.co.uk](http://www.volkswagen.co.uk) or consult your authorised Volkswagen retailer.*

Please refer to [Paint and Combinations section](#), or visit [www.volkswagen.co.uk](http://www.volkswagen.co.uk) for full availability of paint colours.

VAT IS CALCULATED AT 20%. EFFECTIVE FROM 1 JULY 2021.



# Factory-fitted options.

## EXTERIOR

		SE Nav	SEL	R-Line	GTE	GTE Advance	Basic RRP £ Excluding VAT	Total RRP £ Including VAT
'IQ. Light' LED matrix headlights	All LED interactive matrix dipped and main beam headlights, daytime running lights, Including dual 'U-shaped' LED daytime running lights. 12 separate LED lights which perform the indicator function and Dynamic curve lighting. Information from the front camera, navigation's digital map data, GPS information, steering wheel angle and current driving speed activates specific LEDs individually for optimal lighting. Includes specific lighting functions for: city lighting, motorway lighting, motorway dipped beam, poor weather light and sign glare reduction	○	○	○	○	●	1,441.67	1,730.00
Rear tinted glass	Rear tinted glass from B-pillar backwards, approx. 65% tinted	○	●	●	●	●	204.17	245.00
Towbar – swivelling	Swivelling towbar with electric release. 13-pin connection and 12 electrified poles for vehicle lighting plus additional power supply for caravan auxiliary battery charger, internal trailer lighting and fridge	○	○	○	○	○	804.17	965.00

## INTERIOR

Black rooflining	Only in conjunction with Titan Black cloth	○	○	●	○	○	208.33	250.00
Luggage net		○	○	○	○	○	58.33	70.00
Steering wheel – heated, multifunction, leather trimmed	Heated multifunction steering wheel. Only in conjunction with manual gearbox	–	–	○	–	–	191.67	230.00
	Including paddle shift for DSG gearbox. Only in conjunction with DSG gearbox	–	–	○	–	–	191.67	230.00
ergoComfort driver's seat with 14-way electric adjustment with driver's seat massage and memory function	Drivers' seat with electric adjustment for the seat backrest angle, seat height, seat length, seat cushion angle and lumbar adjustment. Including seat cushion depth adjustment and massage, memory and comfort entry/exit functions	○	○	○	–	–	850.00	1,020.00

● Standard equipment   ○ Optional equipment   – Not available.   Factory-fitted options are subject to availability and extended delivery.

Volkswagen UK may change RRP's at any time (this includes where there are government changes in regulation and/or legislation).  
There may be a delay to any RRP displaying correctly on our materials. Always obtain prices from your chosen authorised Volkswagen retailer.

VAT IS CALCULATED AT 20%.   EFFECTIVE FROM 1 JULY 2021.



## IN-CAR ENTERTAINMENT AND COMMUNICATIONS

Active Info Display – 10.25" high resolution TFT dash display screen with customisable menus and information. *Not in conjunction with multifunction computer with colour display*

Digital key – please contact your authorised Volkswagen retailer for specific phone compatibility. *Not GTE Advance models*

Inductive smartphone charging – storage compartment in front centre console for wireless smartphone charging. *Not GTE*

1 We Connect Plus services are accessed via a compatible mobile device. Please see [www.volkswagen.co.uk](http://www.volkswagen.co.uk) for more information. The use of We Connect Plus services entails exchanging large volumes of data. As such, we strongly recommend that you sign-up for a flat rate data plan with your mobile network provider. Information on the duration of We Connect Plus services can be obtained once a user account has been registered on the myVolkswagen web portal. 2 Speed Limit Display only reflects national speed limits and does not show temporary speed limit restrictions, or where permanent changes to speed limits are made in-between map updates. 3 Lock & unlock service is a secure service and requires that your identity be verified via the Volkswagen Ident process. Your identity will be verified by a Volkswagen retailer or via video chat. 4 For the use of the Streaming and Internet based services and for the Wi-Fi hotspot, data packages can be purchased from Cubic Telecom, our mobile communications partner and used in the network coverage area within many European countries. You can find information on prices and supported countries at [vw.cubictelecom.com](http://vw.cubictelecom.com) 5 The Discover Navigation Pro is standard on GTE Advance models, but does not include digital key or inductive smartphone charging. 6 Not in conjunction with steel space saver spare wheel. 7 Must be ordered in conjunction with Climate control 3Zone electronic air conditioning. 8 Only operable in conjunction with compatible inductive charge enabled services smartphones. 9 Not in conjunction with Discover Navigation Pro touch-screen navigation infotainment system.

*Volkswagen UK may change RRP's at any time (this includes where there are government changes in regulation and/or legislation). There may be a delay to any RRP displaying correctly on our materials. Always obtain prices from your chosen authorised Volkswagen retailer.*

VAT IS CALCULATED AT 20%. EFFECTIVE FROM 1 JULY 2021.



[Configure now >](#)

# Factory-fitted options.

## COMFORT AND CONVENIENCE

		SE Nav	SEL	R-Line	GTE	GTE Advance	Basic RRP £ Excluding VAT	Total RRP £ Including VAT
Ambient lighting	Warning LED lights in front and rear doors	○	○	●	●	●	175.00	210.00
Ambient lighting Plus	LED strips in the front and rear doors, LED footwell and dashboard lighting with a choice of colour options, including two front reading lights and two rear reading lights	○	○	-	-	-	400.00	480.00
	LED strips in the front and rear doors, LED footwell and dashboard lighting with a choice of colour options, including two front reading lights and two rear reading lights	-	-	○	○	○	225.00	270.00
Climate control	3Zone electronic air conditioning with automatic air recirculation	○	○	●	●	●	558.33	670.00
Keyless entry and start/stop system	Allows the car to be locked, unlocked and started with a button if the sensor detects the key. Includes Start/Stop button on centre console	○	○	●	○	●	366.67	440.00
Panoramic sunroof	Electric, glass sliding/tilting including integrated roller blind	○	○	○	○	○	850.00	1,020.00

1 Not in conjunction with Keyless entry and start/stop system.

## DRIVER'S ASSISTANCE

Area view	Front, rear and side cameras to provide 360° exterior view of vehicle displayed via vehicle's infotainment system. <i>Not in conjunction with rear-view camera</i>	○	○	○	○	○	708.33	850.00
Head-up Display <sup>1</sup>	Driving information including current speed is projected onto a retractable screen within the driver's field of vision helping to reduce the time that the driver's eyes are averted from the road	-	○ <sup>2</sup>	○	○	○	458.33	550.00
Park Assist	Sensor controlled steering aid to assist parallel or bay parking. Features manoeuvre braking function and optical parking display via vehicle's infotainment system	○	○	○	○	○	183.33	220.00
Rear-view camera	Displayed via the vehicle's infotainment system display. <i>Not in conjunction with Area View</i>	○	○	○	○	○	291.67	350.00
XDS electronic differential lock	Electronic system to improve traction and handling	○	○	○	○	○	175.00	210.00

1 Please note, use of polarised lenses may impair the visibility of the Head-up Display. 2 Must be ordered in conjunction with Climate control 3Zone electronic air conditioning.

● Standard equipment ○ Optional equipment - Not available. Factory-fitted options are subject to availability and extended delivery.

Volkswagen UK may change RRP's at any time (this includes where there are government changes in regulation and/or legislation).  
There may be a delay to any RRP displaying correctly on our materials. Always obtain prices from your chosen authorised Volkswagen retailer.

VAT IS CALCULATED AT 20%. EFFECTIVE FROM 1 JULY 2021.



Make a statement and further enhance your Passat or Passat Estate by choosing from our wealth of stylish, innovative and sporty Volkswagen accessories. Choose from the high-quality carrier systems to the practical protection solutions and select the accessories to perfectly match your lifestyle.



Have a lot more fun when you arrive by throwing a lot more up top before you depart. These city crash-tested roof bars are essential when you want to fit a ski and snowboard holder, a bicycle holder, a useful roof box and more besides.

Two-piece set.

Part number: 3G0 071 126



Two-piece set.  
Part number: 3G0 061 512 82V





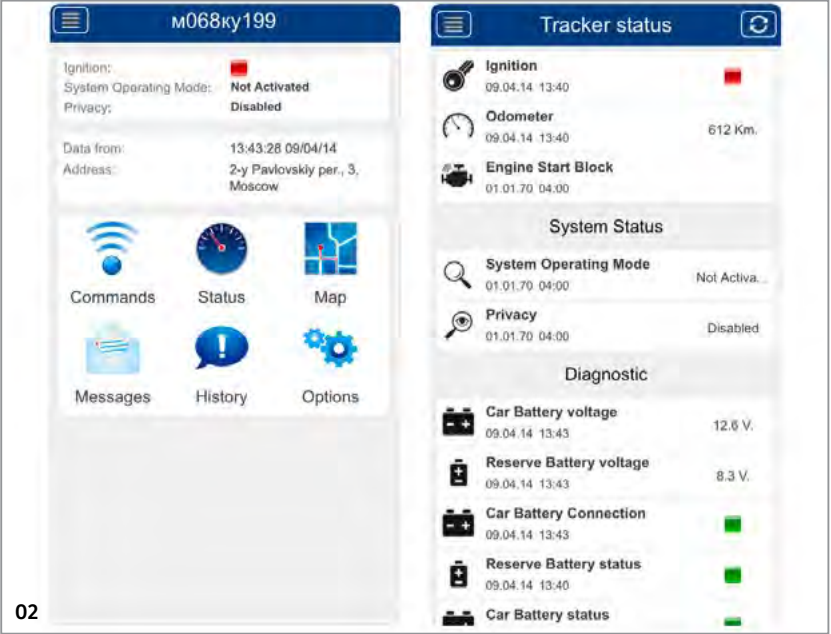
01

**01 Compact III Bicycle Carrier**

This clever carrier uses a super-simple quick release system to fit to your towing hitch, enabling you to transport three bicycles with a max weight of 54kg. It is the smallest, lightest and most compact in its class for the towing hitch and even with bicycles attached, accessing the boot is easy with the newly developed foot switch. Its anti-theft locking device makes life difficult for thieves and when you don't need it, it folds up into its carry bag – locking automatically – to neatly fit in your spare wheel well. Max. bicycle wheelbase 125cm. Part number: 3C2 071 105 A

**02 Meta Trak S5-VTS – GPS Tracker including 1 year subscription**

Take control of exactly what's happening with your vehicle, wherever you are, with our easy-to-use app and relax knowing our Secure Operating Centre is monitoring your vehicle 24/7. System includes live tracking, 24/7 control room monitoring, driver recognition ID tags, instant alerts to your phone, low battery alert, track multiple vehicles with one login, journey history and score, geo-fencing, UK & Europe coverage, service and transport modes. Part number: ZGB 000 054 003



03

**03 Detachable towbar including electrics**

If you prefer to keep your options open, our detachable towbar has all the practicalities. It's got full integration into the vehicle's CAN-bus network and all electrical components including trailer stabilisation system support, switching to stand-by current and the adjustment of all the vehicle's assistance systems, whilst being removable and super-easy to re-fit when you need it. Part number: 3G0 092 150 D

**Fixed towbar**

Part number: 3G0 092 103 D

**Swivelling towbar**

Part number: 3G5 092 160 A (Passat Saloon)  
Part number: 3G9 092 160 A (Passat Estate)



# Accessories. Your Volkswagen your way.

## Passat Saloon.

	Part number	Total RRP £ Including VAT	Total fitted RRP £ Including VAT		Part number	Total RRP £ Including VAT	Total fitted RRP £ Including VAT
PROTECTION AND CAR CARE							
Mudflaps – front	3G0 075 111	–	77.00	Luggage compartment liner	3G5 061 160	76.00	–
Mudflaps – rear	3G0 075 101 C	–	77.00	Semi-rigid loadliner	3G5 061 161	120.50	–
Rubber floor mats – front – black	3G2 061 502 A82 V	63.00	–	Rear bumper protection film – transparent	3G5 061 197	–	115.00
Rubber floor mats – rear – black	3G0 061 512 A82 V	45.50	–	Door sill trims – black/silver	3G0 071 310 BXF	–	151.00
TRAVEL AND TRANSPORT							
Volkswagen roof box – 340 litres – matt black	000 071 200	270.50	–	Towbar – fixed, including electrical installation kit	3G0 092 103 D	–	833.50
Roof bars	3G0 071 126	282.50	–	Towbar – detachable, including electrical installation kit	3G0 092 150 D	–	932.00
Bicycle holder	000 071 128 F	117.50	–	Towbar – swivelling, including electrical kit	3G5 092 160 A	–	1,282.50
Luggage net	3C5 065 110	64.00	–	Compact III towbar mounted bicycle carrier	3C2 071 105 A	610.00	–
Safety kit	000 093 059	26.00	–	Basic II bicycle carrier – holds up to 2 bikes, no boot access while mounted	000 071 105 L	458.00	–
				Clothes hanger	00V 061 127	34.00	–
STYLING AND TECHNOLOGY							
Door sill trims – aluminium (2 pieces)	3G0 071 303	–	134.50	Meta Trak S5-VTS – GPS Tracker including 1 year subscription	ZGB 000 054 003	–	499.00
Dynamic centre caps (self-levelling)	000 071 213 D	–	109.50	UTR (Universal Traffic Recorder) – front	000 063 511 B	–	419.00
				UTR (Universal Traffic Recorder) – front and rear	000 063 511 C	–	626.50

Accessory prices are the manufacturer's Recommended Retail Prices (RRP), shown exclusive and inclusive of fitting where applicable, inclusive of appropriate VAT, and are charged in addition to recommended 'On the road' retail price paid for the vehicle. For full details, please contact your authorised Volkswagen retailer.

Volkswagen UK may change RRP's at any time (this includes where there are government changes in regulation and/or legislation).  
There may be a delay to any RRP displaying correctly on our materials. Always obtain prices from your chosen authorised Volkswagen retailer.

VAT IS CALCULATED AT 20%,  
EXCEPT RETAILER SUPPLIED CHILD SAFETY SEATS WHERE IT IS CALCULATED AT 5%.  
EFFECTIVE FROM 1 JULY 2021.

# Accessories. Your Volkswagen your way.

## Passat Estate.

	Part number	Total RRP £ Including VAT	Total fitted RRP £ Including VAT			Part number	Total RRP £ Including VAT	Total fitted RRP £ Including VAT
PROTECTION AND CAR CARE								
Mudflaps – front	3G0 075 111	–	77.00	Luggage compartment liner		3G9 061 160	76.00	–
Mudflaps – rear	3G0 075 101 C	–	77.00	Reversible boot mat		3G9 061 210	179.00	–
Rubber floor mats – front – black	3G2 061 502 A82 V	63.00	–	Bumper protector – stainless steel look		3G9 061 195	–	135.50
Rubber floor mats – rear – black	3G0 061 512 A82 V	45.50	–	Door sill trims – black/silver		3G0 071 310 BXF	–	151.00
Rear bumper protection film – transparent	3G9 061 197 B	–	98.00					
TRAVEL AND TRANSPORT								
Volkswagen roof box – 340 litres – matt black	000 071 200	270.50	–	Towbar – fixed, including electrical installation kit		3G0 092 103 D	–	833.50
Load bars	3G9 071 151	250.50	–	Towbar – detachable, including electrical installation kit		3G0 092 150 D	–	932.00
Bicycle holder	000 071 128 F	117.50	–	Towbar – swivelling, including electrical kit		3G9 092 160 A	–	TBA
Luggage net	3C5 065 110	64.00	–	Compact III towbar mounted bicycle carrier		3C2 071 105 A	610.00	–
Safety kit	000 093 059	26.00	–	Basic II bicycle carrier – holds up to 2 bikes, no boot access while mounted		000 071 105 L	458.00	–
Clothes hanger	00V 061 127	34.00	–	Partition grille (dog guard)		3G9 017 221	–	399.00
STYLING AND TECHNOLOGY								
Dynamic centre caps (self-levelling)	000 071 213 D	–	109.50	Meta Trak S5-VTS – GPS Tracker including 1 year subscription		ZGB 000 054 003	–	499.00
Door sill trims – steel	3G0 071 303	–	134.50	UTR (Universal Traffic Recorder) – front		000 063 511 B	–	419.00
Rear chrome strip	3G9 071 360 A	–	95.50	UTR (Universal Traffic Recorder) – front and rear		000 063 511 C	–	626.50

Accessory prices are the manufacturer's Recommended Retail Prices (RRP), shown exclusive and inclusive of fitting where applicable, inclusive of appropriate VAT, and are charged in addition to recommended 'On the road' retail price paid for the vehicle. For full details, please contact your authorised Volkswagen retailer.

Volkswagen UK may change RRP's at any time (this includes where there are government changes in regulation and/or legislation).  
There may be a delay to any RRP displaying correctly on our materials. Always obtain prices from your chosen authorised Volkswagen retailer.

VAT IS CALCULATED AT 20%,  
EXCEPT RETAILER SUPPLIED CHILD SAFETY SEATS WHERE IT IS CALCULATED AT 5%.  
EFFECTIVE FROM 1 JULY 2021.



[Configure now >](#)



# Alloy wheels.



**SE N**



**SEL GTE**



**RL GTE A**



**SE N SEL**



**SE N SEL**



**SE N SEL GTE GTE A**

- 01 'Istanbul'** 7J x 17" alloy wheels with 215/55 R17 low rolling resistance tyres and anti-theft wheel bolts.
- 02 'Nevilles' Black** 7J x 17" alloy wheels with 215/55 R17 low rolling resistance tyres and anti-theft wheel bolts.
- 03 'Monterrey' Grey Metallic** 8J x 18" alloy wheels with 235/45 R18 self-sealing tyres and anti-theft wheel bolts.
- 04 'London'** 7J x 17" alloy wheels with 215/55 R17 low rolling resistance tyres and anti-theft wheel bolts.
- 05 'Soho' Anthracite** 7J x 17" alloy wheels with 215/55 R17 low rolling resistance tyres and anti-theft wheel bolts.
- 06 'Oxford'** 8J x 18" alloy wheels with 235/45 R18 low rolling resistance tyres and anti-theft wheel bolts.
- 07 'Wolverton' Black diamond-turned** 8J x 18" alloy wheels with 235/45 R18 tyres and anti-theft wheel bolts.
- 08 'Pretoria' Dark Graphite** 8J x 19" alloy wheels with 235/40 R19 tyres and anti-theft wheel bolts.



**RL GTE A**



**RL GTE A**

☒ Standard ☐ Optional  
**SE N** | SE Nav **SEL** | SEL **RL** | R-Line **GTE** | GTE **GTE A** | GTE Advance

Images shown feature optional metallic paint.

Please note, choosing larger alloy wheels than standard, as an option, may result in increased fuel consumption. This is due to the fact that larger wheels have both more aerodynamic drag and more mechanical drag, resulting in increased rolling resistance and increased wind resistance.

For detailed information regarding tyre efficiency labelling and technical specifications on all potential tyre fitments, visit the Volkswagen online car configurator at [www.volkswagen.co.uk](http://www.volkswagen.co.uk) or consult your authorised Volkswagen retailer.

The Passat and Passat Estate	Model prices	Standard equipment	Driver's assistance systems	Infotainment and connectivity	Factory-fitted options	Accessories	Alloy wheels	Paint	Upholstery and decorative inserts	Combinations	Dimensions	AdBlue®	VED and additional 'On the road' costs	Environmental information	CO <sub>2</sub> , BIK % and VED Bands with optional wheels	Company car taxation chart and comparison	Volkswagen service and service plan
------------------------------	--------------	--------------------	-----------------------------	-------------------------------	------------------------	-------------	--------------	-------	-----------------------------------	--------------	------------	---------	--	---------------------------	--	---	-------------------------------------

# Paint.



01

SE N SEL RL GTE



02

SE N SEL RL GTE



03

SE N SEL RL GTE



04

SE N SEL RL GTE



05

SE N SEL RL GTE



06

RL



07

SE N SEL RL



08

SE N SEL RL GTE

- 01 Pure White Non-Metallic 0Q
- 02 Moonstone Grey Non-Metallic C2
- 03 Tornado Red Non-Metallic G2
- 04 Scale Silver Metallic 1T
- 05 Manganese Grey Metallic 5V
- 06 Lapiz Blue Metallic Signature L9
- 07 Aquamarine Blue Ultra Metallic 8H
- 08 Deep Black Pearl Effect 2T

Standard

Optional

SE N | SE NavSEL | SELRL | R-LineGTE | GTE/GTE Advance

Models 01-04 and 06-07 are Passat Estate SEL with optional Park Assist and 'IQ. Light' LED matrix headlights.  
Please note: Colour range is reproduced for illustration purposes only. Actual on-car colours may vary from those shown, as screen technology does allow exact reproduction of the paint colours.



# Upholstery and decorative inserts.



SE N



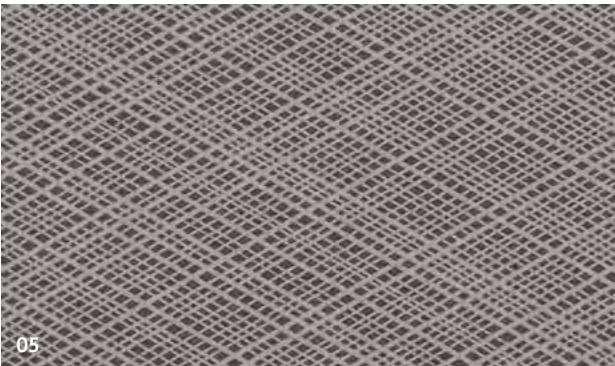
SEL GTE



RL



RL



SEL GTE



RL

- Upholstery**  
Standard on SE Nav  
01 'Django' cloth Titan Black (TO)  
  
Standard on SEL, GTE and GTE Advance  
02 'Vienna' leather† Titan Black (TO)  
  
Standard on R-Line  
03 'Nappa' leather† and 'Carbon Optic' Titan Black/Titan Black (OH)  
04 'Nappa' leather† and 'Carbon Optic' Black/Flint Grey (OK)
- Decorative inserts**  
Standard on SE Nav, SEL, GTE and GTE Advance  
05 'Cross Hatch'  
  
Standard on R-Line  
06 'Dark Diamond Flag'

☒ Standard ☐ Optional  
SE N | SE Nav SEL | SEL RL | R-Line GTE | GTE/GTE Advance

† Some parts of leather interior will contain artificial leather.  
Please note: Swatches and decorative inserts reproduced for illustration purposes only. Actual colours may vary from those shown, as screen technology does not allow exact reproduction of the upholstery and decorative insert colours.

# Combinations.

	Carpet	Dashboard Upper/lower	Rooflining	Pure White 0Q Non-Metallic*	Moonstone Grey C2 Non-Metallic	Tornado Red G2 Non-Metallic*	Scale Silver 1T Metallic*	Manganese Grey 5V Metallic*	Lapiz Blue L9 Metallic Signature*	Aquamarine Blue 8H Ultra Metallic*	Deep Black 2T Pearl Effect*
<b>‘Django’ cloth</b> Standard on SE Nav											
Titan Black (TO)	Titan Black	Titan Black/Titan Black	Mistral Grey	●	●	●	●	●	-	●	●
<b>‘Vienna’ leather †</b> Standard on SEL											
Titan Black (TO)	Titan Black	Titan Black/Titan Black	Mistral Grey	●	●	●	●	●	-	●	●
<b>‘Nappa’ leather † and ‘Carbon Optic’</b> Standard on R-Line											
Titan Black/Titan Black (OH)	Titan Black	Titan Black	Titan Black	●	●	●	●	●	●	●	●
Flint Grey/Black (OK)	Titan Black	Titan Black	Titan Black	●	●	●	●	●	●	●	●
<b>‘Vienna’ leather †</b> Standard on GTE and GTE Advance											
Titan Black (TO)	Titan Black	Titan Black/Titan Black	Mistral Grey	●	●	●	●	●	-	-	●

\* Optional at extra cost. † Some parts of leather interior will contain artificial leather. ‡ Must be ordered in conjunction with Climate control 3Zone electronic air conditioning. ● Standard. ○ Optional. - Not available.



# Dimensions – Passat Saloon.

## Exterior dimensions

Length – min./max., mm	4775/4873
Width – inc. door mirrors, mm	2083
Height – max., mm	1483
Height – opened tailgate/floor, mm	1747
Wheelbase, mm	2786
Turning circle, m	11.7

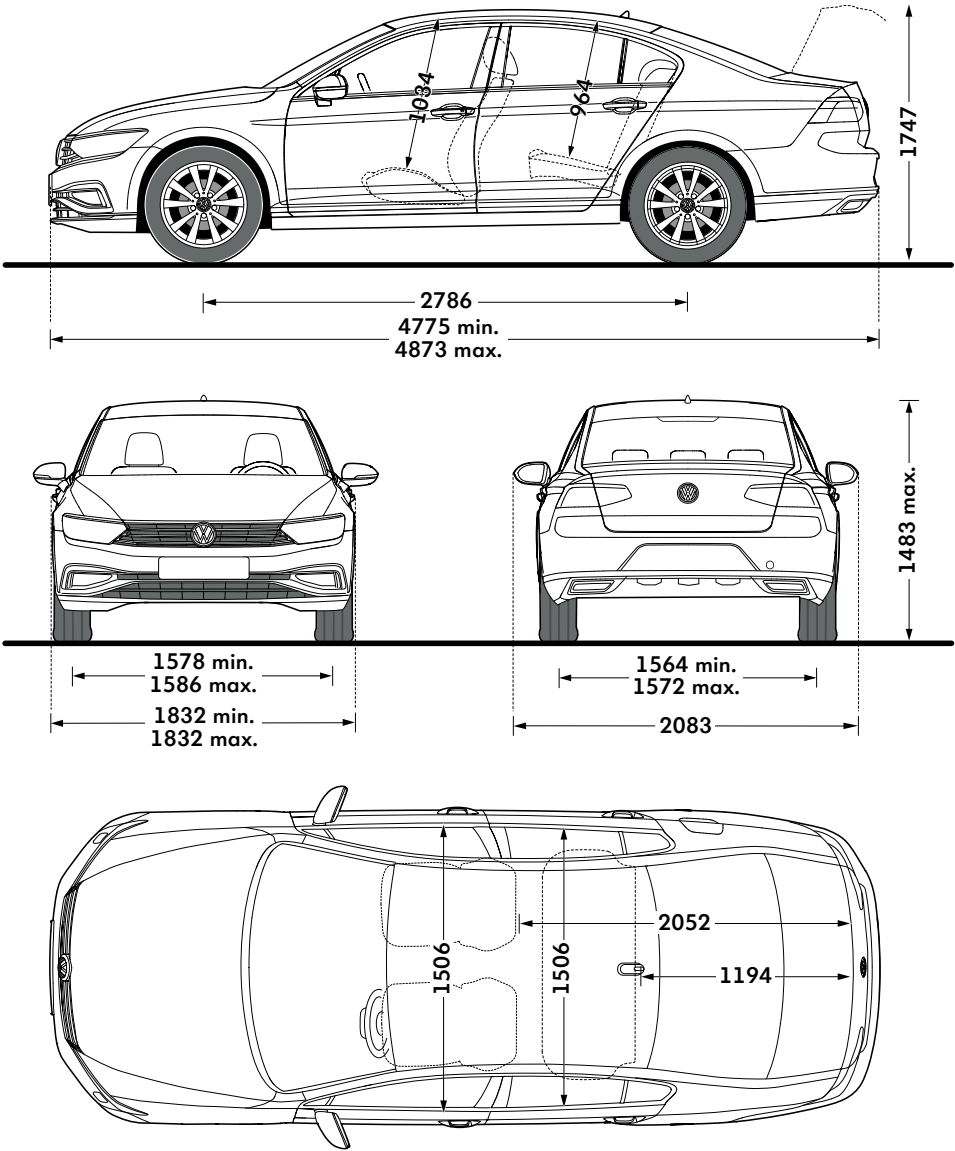
## Interior dimensions

Effective headroom – front, mm	1034
Effective headroom – rear, mm	964
Interior width – front, mm	1506
Interior width – rear, mm	1506

## Maximum luggage capacity, litres VDA measuring method using 200 x 100 x 50mm blocks

With rear seats upright and rear bench forward	586
With rear seats folded and rear bench forward	1152

Figures shown are for standard specification models. The addition of certain factory-fitted options and/or accessories may affect some of the dimensions shown.



On illustrations, where arrows and figures are shown inside of the vehicle, the measurements are for interior dimensions. Where arrows and figures are shown outside of the vehicle, the measurements are for exterior dimensions.

Please note: illustrations shown may not necessarily reflect UK specification.

# Dimensions – Passat Estate.

## Exterior dimensions

Length – min./max., mm	4773/4889
Width – inc. door mirrors, mm	2083
Height – max., mm	1516
Height – opened tailgate/floor, mm	2048
Wheelbase, mm	2786
Turning circle, m	11.7

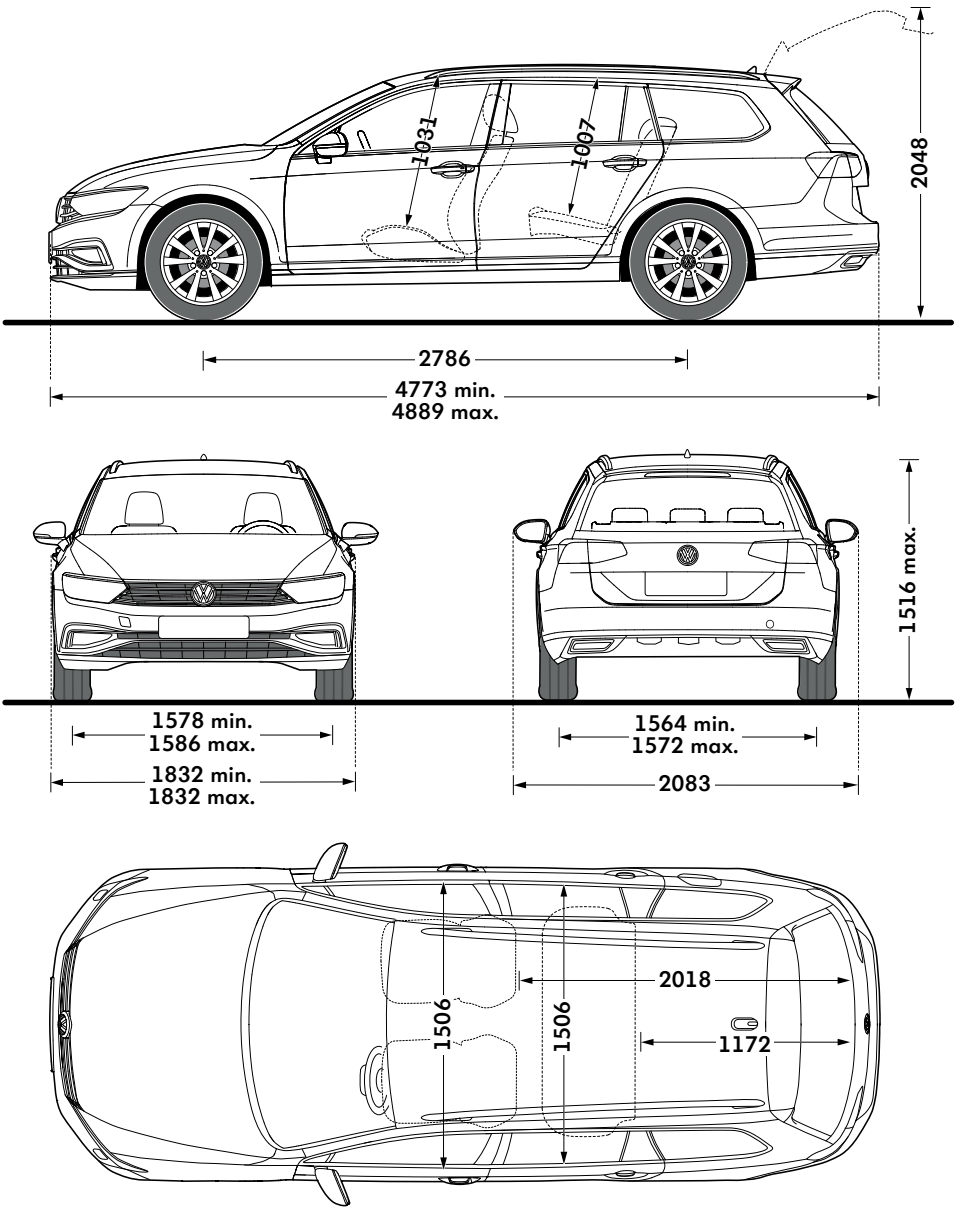
## Interior dimensions

Effective headroom – front, mm	1031
Effective headroom – rear, mm	1007
Interior width – front, mm	1506
Interior width – rear, mm	1506

## Maximum luggage capacity, litres VDA measuring method using 200 x 100 x 50mm blocks

With rear seats upright and rear bench forward	650
With rear seats folded and rear bench forward	1780

Figures shown are for standard specification models. The addition of certain factory-fitted options and/or accessories may affect some of the dimensions shown.



On illustrations, where arrows and figures are shown inside of the vehicle, the measurements are for interior dimensions. Where arrows and figures are shown outside of the vehicle, the measurements are for exterior dimensions.

Please note: illustrations shown may not necessarily reflect UK specification.



# AdBlue®.

Your Volkswagen car is fitted with an advanced emissions control system, which helps your vehicle meet EURO 6 exhaust gas regulations.

### How does the system work?

AdBlue®, a water/urea based additive, is stored in a tank (like diesel fuel), however, unlike fuel it is not injected into the engine, but directly into a specially modified part of the vehicle’s exhaust. This begins a chemical reaction which removes the polluting oxides of nitrogen (NOx), converting them into harmless oxygen and nitrogen in a process known as Selective Catalytic Reduction, or SCR for short. SCR is only applicable to diesel engines and the more economically you drive, typically, the less AdBlue® you will use.

The size of the AdBlue® tank fitted to your car will vary depending on which Volkswagen model you have, therefore the interval between top-ups will vary. In addition, many factors such as mileage, journey type, driving style and environmental conditions can influence how much AdBlue® is consumed. A passenger car can consume approximately 1.5 litres of AdBlue® every 620 miles (1.0–1.5 litres for the Passat and Passat Estate). The chart below details the AdBlue® tank size and location.

Model (SCR derivatives only)	Tank size (Approximately)	AdBlue® tank filler location	Initial warning of low AdBlue® (2,400km/1,500 miles to go) can be expected to occur at:
Passat and Passat Estate	13 litres	Next to fuel filler nozzle	4,000 to 6,500 miles or sooner*

\* Distances are approximate and the warning light may come on sooner depending on driving style, journey type, engine and vehicle load and environmental conditions.

### How will I know if the system needs topping-up?

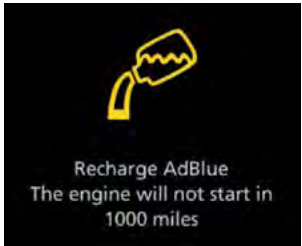
A series of warnings will be given via the driver information system, accompanied by advice/messages.

The first message is displayed when the remaining range is approximately 1,500 miles, and is repeated every 62 miles until the range reaches 1,000 miles, at which point the warning turns amber. This warning is repeated every 31 miles and is accompanied by an audible tone. If these warnings are not acted upon, the warning turns red; once this happens the car will not restart once the ignition is turned off. This is not a fault, but a required feature of the system. If this stage is reached the system will need a full top-up before the car can be restarted. Further information is available in the vehicle handbook.

### Why should I use a Volkswagen Authorised repairer for top-ups?

- AdBlue® top-ups at authorised repairers are extremely competitive and charged by the litre, so you only pay for what you need
- Authorised repairer staff are trained to handle AdBlue®
- AdBlue® tanks need special adaptors on fillers to ensure there are no spillages
- Volkswagen do not recommend keeping top-up bottles in cars

The top-up bottles supplied by Volkswagen have a capacity of 1.89 litres, and come complete with the adaptor nozzles that fit the Volkswagen AdBlue® tank. These are available from all Volkswagen Authorised repairers.



AdBlue® warning lights.

Important information

- AdBlue® is not a fuel additive. This is why there is a separate AdBlue® tank
- If you put AdBlue® in your fuel tank by mistake, please do not start the engine, but contact a retailer for help
- Put only AdBlue® in the AdBlue® tank; do not fill the AdBlue® tank with any other liquids
- Prevent anything from contaminating AdBlue®
- If small quantities of AdBlue® come into contact with the vehicle’s paintwork, for example, wipe them off and if necessary rinse the area with water

EFFECTIVE FROM 1 JULY 2021.

# VED and additional ‘On the road’ costs.

Diesel vehicles that do not meet the RDE2 standard will be charged a supplement on their ‘First year rate’ to the effect of moving up by one VED (Vehicle Excise Duty) band. The following tables give the rates of vehicle tax on cars registered on or after 1 April 2021. Please refer to the Model Prices pages to confirm which models are RDE2 compliant.

## ‘FIRST YEAR RATE’ VED – CARS REGISTERED ON OR AFTER 1.4.2021 BASED ON CO<sub>2</sub> EMISSIONS AND FUEL TYPE

Petrol/Diesel<sup>†</sup> – ‘First year rate’ VED

CO <sub>2</sub> emissions (g/km)	Petrol/Diesel <sup>†</sup> VED £	Petrol total ‘On the road’ costs £
0	0.00	690.00
1-50	10.00	700.00
51-75	25.00	715.00
76-90	115.00	805.00
91-100	140.00	830.00
101-110	160.00	850.00
111-130	180.00	870.00
131-150	220.00	910.00
151-170	555.00	1,245.00
171-190	895.00	1,585.00
191-225	1,345.00	2,035.00
226-255	1,910.00	2,600.00
Over 255	2,245.00	2,935.00

Diesel<sup>‡</sup> – ‘First year rate’ VED

CO <sub>2</sub> emissions (g/km)	Diesel <sup>‡</sup> VED £	Diesel total ‘On the road’ costs £
0	0.00	690.00
1-50	25.00	715.00
51-75	115.00	805.00
76-90	140.00	830.00
91-100	160.00	850.00
101-110	180.00	870.00
111-130	220.00	910.00
131-150	555.00	1,245.00
151-170	895.00	1,585.00
171-190	1,345.00	2,035.00
191-225	1,910.00	2,600.00
226-255	2,245.00	2,935.00
Over 255	2,245.00	2,935.00

Alternative fuel – ‘First year rate’ VED

CO <sub>2</sub> emissions (g/km)	Alternative fuel VED £	Alternative fuel total ‘On the road’ costs £
0	0.00	690.00
1-50	0.00	690.00
51-75	15.00	705.00
76-90	105.00	795.00
91-100	130.00	820.00
101-110	150.00	840.00
111-130	170.00	860.00
131-150	210.00	900.00
151-170	545.00	1,235.00
171-190	885.00	1,575.00
191-225	1,335.00	2,025.00
226-255	1,900.00	2,590.00
Over 255	2,235.00	2,925.00

The way VED (Vehicle Excise Duty) vehicle tax is calculated will change for vehicles that are first registered with the DVLA on, or after, 1 April 2018. All new diesel vehicles registered after 1 April 2018 that do not meet the RDE2 standard will be charged a supplement on their ‘First year rate’ to the effect of moving up by one VED (Vehicle Excise Duty) band.

If a new vehicle is registered on or after 1 April 2018, after the ‘First year rate’ VED the majority of vehicles move to the ‘Standard rate’ of vehicle tax which is £155 a year.

The ‘First year rate’ will be based on the CO<sub>2</sub> emissions, fuel type and the list price of the vehicle supplied by the Manufacturer or Retailer as applicable on the day before the vehicle is first registered and taxed.

After the ‘First year rate’, all vehicles with zero emissions will be exempt from the ‘Standard rate’ of vehicle tax. All petrol and diesel vehicles will pay a standard rate of £155 a year, and alternative fuel vehicles will pay a standard rate of £145 a year.

Petrol or diesel vehicles with a list price over £40,000 at first registration will pay £490 a year, after the first ‘First year rate’ vehicle tax, for a period of five years. This comprises the £155 ‘Standard rate’ and £335 additional rate. After five years the vehicle tax will revert to the ‘Standard rate’ of £155 per year.

Alternative fuel vehicles – hybrids, bi-ethanol or LPG, with a list price over £40,000 at first registration will pay £480 a year after the ‘First year rate’ vehicle tax for a period of five years. This comprises the £145 ‘Standard rate’ and £335 additional rate which reverts to £145 ‘Standard rate’ after five years.

Vehicles with a list price exceeding £40,000 (excluding vehicles with zero emissions) will pay the additional rate of £335 a year for a further five year period, after the ‘First year rate’ tax. After the five year period these vehicles will pay zero VED tax.

## ‘STANDARD RATE’ VED

‘Standard rate’ VED based on fuel type

Fuel type	CO <sub>2</sub> emissions (g/km)	‘Standard rate’ 12 months VED £
Electric/Other	0	0.00
Petrol/Diesel	1 - Over 255	155.00
Alternative	1 - Over 255	145.00

After the ‘First year rate’, all vehicles with zero emissions will be exempt from the ‘Standard rate’ of vehicle tax. All petrol and diesel vehicles will pay a standard rate of £155 a year, and alternative fuel vehicles will pay a standard rate of £145 a year.

## ‘STANDARD RATE’ – OVER £40,000 RRP

‘Standard rate’ VED for vehicles over £40,000 list price – five year annual rate

Fuel type	‘Standard rate’ 12 months VED £	Additional rate £	Total annual payment £
Electric	0.00	0.00	0.00
Petrol/Diesel	155.00	335.00	490.00
Alternative	145.00	335.00	480.00

Petrol or diesel vehicles with a list price over £40,000 at first registration pay £490 a year after the ‘First year rate’ for a period of five years. Alternative fuel vehicles over £40,000 at first registration – hybrids, bi-ethanol or LPG, pay £480 a year after the ‘First year rate’ for a period of five years. After five years, vehicles will revert to their ‘Standard rate’ tax depending on fuel type. Electric or vehicles producing zero emissions over £40,000 at first registration are exempt from any charge after the ‘First year rate’.

## ADDITIONAL ‘OTR’ COSTS

Additional ‘On the road’ costs

Delivery to retailer	509.17
Number plates	20.00
VAT	105.83
Vehicle first registration fee	55.00
Total	690.00

The total ‘On the road’ costs above for petrol, diesel, electric and alternative fuel vehicles include the applicable ‘First year rate’ VED charge plus the ‘On the road’ costs as detailed above.

VAT IS CALCULATED AT 20%. EFFECTIVE FROM 1 JULY 2021.



Environmental information – Passat.

		RDE2 Compliant	Fuel	Transmission	Output, PS	CO <sub>2</sub> emission, g/km <sup>1</sup> , Min. WLTP test cycle			CO <sub>2</sub> emission, g/km <sup>1</sup> , Max. WLTP test cycle			Combined <sup>1</sup> fuel consumption mpg, Min.			Combined <sup>1</sup> fuel consumption ltr/100km, Min.		
4-DOOR SALOON RANGE.																	
SE NAV <sup>‡</sup>	1.5 ltr TSI EVO <sup>‡</sup>	Yes	Petrol	6-spd manual	150	138	–	149	42.8	–	46.3	6.6	–	6.1			
	1.5 ltr TSI EVO <sup>‡</sup>	Yes	Petrol	7-spd auto DSG	150	141	–	153	41.5	–	45.6	6.8	–	6.2			
	2.0 ltr TDI EVO SCR <sup>‡</sup>	Yes	Diesel	7-spd auto DSG	122	124	–	135	54.3	–	60.1	5.2	–	4.7			
	2.0 ltr TDI EVO SCR <sup>‡</sup>	Yes	Diesel	6-spd manual	150	123	–	134	55.4	–	60.1	5.1	–	4.7			
	2.0 ltr TDI EVO SCR <sup>‡</sup>	Yes	Diesel	7-spd auto DSG	150	123	–	133	55.4	–	60.1	5.1	–	4.7			
SEL <sup>‡</sup>	1.5 ltr TSI EVO <sup>‡</sup>	Yes	Petrol	6-spd manual	150	139	–	149	42.8	–	46.3	6.6	–	6.1			
	1.5 ltr TSI EVO <sup>‡</sup>	Yes	Petrol	7-spd auto DSG	150	141	–	153	41.5	–	45.6	6.8	–	6.2			
	2.0 ltr TDI EVO SCR <sup>‡</sup>	Yes	Diesel	7-spd auto DSG	122	124	–	135	54.3	–	60.1	5.2	–	4.7			
	2.0 ltr TDI EVO SCR <sup>‡</sup>	Yes	Diesel	6-spd manual	150	124	–	134	55.4	–	60.1	5.1	–	4.7			
	2.0 ltr TDI EVO SCR <sup>‡</sup>	Yes	Diesel	7-spd auto DSG	150	123	–	133	55.4	–	60.1	5.1	–	4.7			

1 Figures for the Volkswagen Passat range, including petrol, diesel and hybrid vehicles. Plug-in hybrid vehicles require mains electricity for charging. Figures for hybrid vehicles were obtained using a combination of battery power and fuel. Figures shown are for comparability purposes; only compare fuel consumption, CO<sub>2</sub> and electric range figures with other vehicles tested to the same technical procedures. These figures may not reflect real life driving results, which will depend upon a number of factors including the accessories fitted (post-registration), variations in weather, driving styles and vehicle load. Data correct at 1.7.2021. Figures quoted are for a range of configurations (including non-UK) and are subject to change due to ongoing approvals/changes. For more information, please see [www.volkswagen.co.uk/need-help/wltp](http://www.volkswagen.co.uk/need-help/wltp) or consult your authorised Volkswagen retailer.

‡ These vehicles are WLTP (Worldwide Harmonised Light-Duty Vehicles Test Procedure) type approved vehicles. More information is available at [www.volkswagen.co.uk/need-help/wltp](http://www.volkswagen.co.uk/need-help/wltp).

† Please note these models may no longer be available to order, or only be available from stock and not available to factory order.

SCR (Selective Catalytic Reduction) requires AdBlue®, [please click here](#) or visit [www.volkswagen.co.uk/technology/engines/adblue](http://www.volkswagen.co.uk/technology/engines/adblue) for more details.

RDE2 refers to Real Driving Emissions Step 2.

EFFECTIVE FROM 1 JULY 2021.

# Environmental information – Passat.

4-DOOR SALOON RANGE.		RDE2 Compliant	Fuel	Transmission	Output, PS	CO <sub>2</sub> emission, g/km <sup>1</sup> , Min. WLTP test cycle			CO <sub>2</sub> emission, g/km <sup>1</sup> , Max. WLTP test cycle			Combined <sup>1</sup> fuel consumption mpg, Min.			Combined <sup>1</sup> fuel consumption ltr/100km, Min.		
R-LINE ‡	1.5 ltr TSI EVO ‡	Yes	Petrol	6-spd manual	150	142	–	150	42.8	–	45.6	6.6	–	6.2			
	1.5 ltr TSI EVO ‡	Yes	Petrol	7-spd auto DSG	150	145	–	154	41.5	–	44.1	6.8	–	6.4			
	2.0 ltr TDI EVO SCR ‡	Yes	Diesel	6-spd manual	150	126	–	134	55.4	–	58.9	5.1	–	4.8			
	2.0 ltr TDI EVO SCR ‡	Yes	Diesel	7-spd auto DSG	150	126	–	134	55.4	–	58.9	5.1	–	4.8			
	2.0 ltr TDI SCR ‡	Yes	Diesel	7-spd auto DSG	200	137	–	145	51.4	–	54.3	5.5	–	5.2			

1 Figures for the Volkswagen Passat range, including petrol, diesel and hybrid vehicles. Plug-in hybrid vehicles require mains electricity for charging. Figures for hybrid vehicles were obtained using a combination of battery power and fuel. Figures shown are for comparability purposes; only compare fuel consumption, CO<sub>2</sub> and electric range figures with other vehicles tested to the same technical procedures. These figures may not reflect real life driving results, which will depend upon a number of factors including the accessories fitted (post-registration), variations in weather, driving styles and vehicle load. Data correct at 1.7.2021. Figures quoted are for a range of configurations (including non-UK) and are subject to change due to ongoing approvals/changes.

For more information, please see [www.volkswagen.co.uk/need-help/wltp](http://www.volkswagen.co.uk/need-help/wltp) or consult your authorised Volkswagen retailer.

‡ These vehicles are WLTP (Worldwide Harmonised Light-Duty Vehicles Test Procedure) type approved vehicles. More information is available at [www.volkswagen.co.uk/need-help/wltp](http://www.volkswagen.co.uk/need-help/wltp).

SCR (Selective Catalytic Reduction) requires AdBlue®, [please click here](#) or visit [www.volkswagen.co.uk/technology/engines/adblue](http://www.volkswagen.co.uk/technology/engines/adblue) for more details.

RDE2 refers to Real Driving Emissions Step 2.

EFFECTIVE FROM 1 JULY 2021.



# Environmental information – Passat.

PETROL/ELECTRIC HYBRID 4-DOOR SALOON RANGE.		RDE2 Compliant	Fuel	Transmission	Combined output, PS	Combined CO <sub>2</sub> emission, g/km <sup>1</sup> Min. WLTP test cycle	Combined CO <sub>2</sub> emission, g/km <sup>1</sup> Max. WLTP test cycle	Combined Fuel Consumption <sup>1</sup> mpg/ltr per 100km	Combined Energy Consumption <sup>1</sup> miles/kWh	Combined Electric Range, miles/km (WLTP) <sup>1</sup>	City Electric Range, miles/km (WLTP) <sup>1</sup>
GTE ‡	1.4 ltr TSI PHEV ‡	Yes	Plug-in Hybrid	6-spd auto DSG	218	24	27	282.5/1.0	4.20	40/64	43/70
GTE ADVANCE ‡	1.4 ltr TSI PHEV ‡	Yes	Plug-in Hybrid	6-spd auto DSG	218	26	27	256.8/1.1	4.12	38/62	43/69

1 Figures for the Volkswagen Passat range, including petrol, diesel and hybrid vehicles. Plug-in hybrid vehicles require mains electricity for charging. Figures for hybrid vehicles were obtained using a combination of battery power and fuel. Figures shown are for comparability purposes; only compare fuel consumption, CO<sub>2</sub> and electric range figures with other vehicles tested to the same technical procedures. These figures may not reflect real life driving results, which will depend upon a number of factors including the accessories fitted (post-registration), variations in weather, driving styles and vehicle load. Data correct at 1.7.2021. Figures quoted are for a range of configurations (including non-UK) and are subject to change due to ongoing approvals/changes. For more information, please see [www.volkswagen.co.uk/need-help/wltp](http://www.volkswagen.co.uk/need-help/wltp) or consult your authorised Volkswagen retailer.

‡ These vehicles are WLTP (Worldwide Harmonised Light-Duty Vehicles Test Procedure) type approved vehicles. More information is available at [www.volkswagen.co.uk/need-help/wltp](http://www.volkswagen.co.uk/need-help/wltp). RDE2 refers to Real Driving Emissions Step 2.

EFFECTIVE FROM 1 JULY 2021.



# Environmental information – Passat Estate.

5-DOOR ESTATE RANGE.		RDE2 Compliant	Fuel	Transmission	Output, PS	CO <sub>2</sub> emission, g/km <sup>1</sup> , Min. WLTP test cycle		CO <sub>2</sub> emission, g/km <sup>1</sup> , Max. WLTP test cycle	Combined <sup>1</sup> fuel consumption mpg, Min.		Combined <sup>1</sup> fuel consumption mpg, Max.	Combined <sup>1</sup> fuel consumption ltr/100km, Min.		Combined <sup>1</sup> fuel consumption ltr/100km, Max.
SE NAV <sup>‡</sup>	1.5 ltr TSI EVO <sup>‡</sup>	Yes	Petrol	6-spd manual	150	143	–	154	41.5	–	44.8	6.8	–	6.3
	1.5 ltr TSI EVO <sup>‡</sup>	Yes	Petrol	7-spd auto DSG	150	146	–	160	39.8	–	44.1	7.1	–	6.4
	2.0 ltr TDI EVO SCR <sup>‡</sup>	Yes	Diesel	7-spd auto DSG	122	127	–	140	53.3	–	57.6	5.3	–	4.9
	2.0 ltr TDI EVO SCR <sup>‡</sup>	Yes	Diesel	6-spd manual	150	127	–	139	53.3	–	57.6	5.3	–	4.9
	2.0 ltr TDI EVO SCR <sup>‡</sup>	Yes	Diesel	7-spd auto DSG	150	127	–	139	53.3	–	57.6	5.3	–	4.9
SEL <sup>‡</sup>	1.5 ltr TSI EVO <sup>‡</sup>	Yes	Petrol	6-spd manual	150	143	–	154	41.5	–	44.8	6.8	–	6.3
	1.5 ltr TSI EVO <sup>‡</sup>	Yes	Petrol	7-spd auto DSG	150	146	–	160	39.8	–	43.5	7.1	–	6.5
	2.0 ltr TDI EVO SCR <sup>‡</sup>	Yes	Diesel	7-spd auto DSG	122	128	–	140	53.3	–	57.6	5.3	–	4.9
	2.0 ltr TDI EVO SCR <sup>‡</sup>	Yes	Diesel	6-spd manual	150	128	–	139	53.3	–	57.6	5.3	–	4.9
	2.0 ltr TDI EVO SCR <sup>‡</sup>	Yes	Diesel	7-spd auto DSG	150	127	–	139	53.3	–	57.6	5.3	–	4.9

<sup>1</sup> Figures for the Volkswagen Passat range, including petrol, diesel and hybrid vehicles. Plug-in hybrid vehicles require mains electricity for charging. Figures for hybrid vehicles were obtained using a combination of battery power and fuel. Figures shown are for comparability purposes; only compare fuel consumption, CO<sub>2</sub> and electric range figures with other vehicles tested to the same technical procedures. These figures may not reflect real life driving results, which will depend upon a number of factors including the accessories fitted (post-registration), variations in weather, driving styles and vehicle load. Data correct at 1.7.2021. Figures quoted are for a range of configurations (including non-UK) and are subject to change due to ongoing approvals/changes.

For more information, please see [www.volkswagen.co.uk/need-help/wltp](http://www.volkswagen.co.uk/need-help/wltp) or consult your authorised Volkswagen retailer.

<sup>‡</sup> These vehicles are WLTP (Worldwide Harmonised Light-Duty Vehicles Test Procedure) type approved vehicles. More information is available at [www.volkswagen.co.uk/need-help/wltp](http://www.volkswagen.co.uk/need-help/wltp).

<sup>†</sup> Please note these models may no longer be available to order, or only be available from stock and not available to factory order.

SCR (Selective Catalytic Reduction) requires AdBlue<sup>®</sup>, [please click here](#) or visit [www.volkswagen.co.uk/technology/engines/adblue](http://www.volkswagen.co.uk/technology/engines/adblue) for more details.

RDE2 refers to Real Driving Emissions Step 2.

EFFECTIVE FROM 1 JULY 2021.



# Environmental information – Passat Estate.

5-DOOR ESTATE RANGE.		RDE2 Compliant	Fuel	Transmission	Output, PS	CO <sub>2</sub> emission, g/km <sup>1</sup> , Min. WLTP test cycle			CO <sub>2</sub> emission, g/km <sup>1</sup> , Max. WLTP test cycle			Combined <sup>1</sup> fuel consumption mpg, Min.		Combined <sup>1</sup> fuel consumption mpg, Max.		Combined <sup>1</sup> fuel consumption ltr/100km, Min.		Combined <sup>1</sup> fuel consumption ltr/100km, Max.	
R-LINE ‡	1.5 ltr TSI EVO ‡	Yes	Petrol	6-spd manual	150	146	–	155	41.5	–	44.1	6.8	–	6.4					
	1.5 ltr TSI EVO ‡	Yes	Petrol	7-spd auto DSG	150	150	–	161	39.8	–	42.8	7.1	–	6.6					
	2.0 ltr TDI EVO SCR ‡	Yes	Diesel	6-spd manual	150	131	–	140	53.3	–	56.5	5.3	–	5.0					
	2.0 ltr TDI EVO SCR ‡	Yes	Diesel	7-spd auto DSG	150	131	–	139	53.3	–	56.5	5.3	–	5.0					
	2.0 ltr TDI SCR ‡	Yes	Diesel	7-spd auto DSG	200	142	–	151	48.7	–	52.3	5.8	–	5.4					

1 Figures for the Volkswagen Passat range, including petrol, diesel and hybrid vehicles. Plug-in hybrid vehicles require mains electricity for charging. Figures for hybrid vehicles were obtained using a combination of battery power and fuel. Figures shown are for comparability purposes; only compare fuel consumption, CO<sub>2</sub> and electric range figures with other vehicles tested to the same technical procedures. These figures may not reflect real life driving results, which will depend upon a number of factors including the accessories fitted (post-registration), variations in weather, driving styles and vehicle load. Data correct at 1.7.2021. Figures quoted are for a range of configurations (including non-UK) and are subject to change due to ongoing approvals/changes. For more information, please see [www.volkswagen.co.uk/need-help/wltp](http://www.volkswagen.co.uk/need-help/wltp) or consult your authorised Volkswagen retailer.

‡ These vehicles are WLTP (Worldwide Harmonised Light-Duty Vehicles Test Procedure) type approved vehicles. More information is available at [www.volkswagen.co.uk/need-help/wltp](http://www.volkswagen.co.uk/need-help/wltp).

SCR (Selective Catalytic Reduction) requires AdBlue<sup>®</sup>, [please click here](#) or visit [www.volkswagen.co.uk/technology/engines/adblue](http://www.volkswagen.co.uk/technology/engines/adblue) for more details.

RDE2 refers to Real Driving Emissions Step 2.

EFFECTIVE FROM 1 JULY 2021.

[Configure now >](#)

# Environmental information – Passat Estate.

PETROL/ELECTRIC HYBRID 5-DOOR ESTATE RANGE.		RDE2 Compliant	Fuel	Transmission	Combined output, PS	Combined CO <sub>2</sub> emission, g/km <sup>1</sup> Min. WLTP test cycle	Combined CO <sub>2</sub> emission, g/km <sup>1</sup> Max. WLTP test cycle	Combined Fuel Consumption <sup>1</sup> mpg/ltr per 100km	Combined Energy Consumption <sup>1</sup> miles/kWh	Combined Electric Range, miles/km (WLTP) <sup>1</sup>	City Electric Range, miles/km (WLTP) <sup>1</sup>
GTE ‡	1.4 ltr TSI PHEV ‡	Yes	Plug-in Hybrid	6-spd auto DSG	218	26	30	256.8/1.1	4.09	38/61	43/69
GTE ADVANCE ‡	1.4 ltr TSI PHEV ‡	Yes	Plug-in Hybrid	6-spd auto DSG	218	28	30	235.4/1.2	4.01	37/59	42/68

<sup>1</sup> Figures for the Volkswagen Passat range, including petrol, diesel and hybrid vehicles. Plug-in hybrid vehicles require mains electricity for charging. Figures for hybrid vehicles were obtained using a combination of battery power and fuel. Figures shown are for comparability purposes; only compare fuel consumption, CO<sub>2</sub> and electric range figures with other vehicles tested to the same technical procedures. These figures may not reflect real life driving results, which will depend upon a number of factors including the accessories fitted (post-registration), variations in weather, driving styles and vehicle load. Data correct at 1.7.2021. Figures quoted are for a range of configurations (including non-UK) and are subject to change due to ongoing approvals/changes. For more information, please see [www.volkswagen.co.uk/need-help/wltp](http://www.volkswagen.co.uk/need-help/wltp) or consult your authorised Volkswagen retailer.

‡ These vehicles are WLTP (Worldwide Harmonised Light-Duty Vehicles Test Procedure) type approved vehicles. More information is available at [www.volkswagen.co.uk/need-help/wltp](http://www.volkswagen.co.uk/need-help/wltp).  
RDE2 refers to Real Driving Emissions Step 2.

EFFECTIVE FROM 1 JULY 2021.



# CO<sub>2</sub> emissions, BIK % and VED Bands with optional wheels – Passat.

## Effect of wheel size on CO<sub>2</sub> emissions, BIK % and VED Bands.

Choosing alternative alloy wheels than standard, as an option, may result in different fuel consumption as well as different CO<sub>2</sub> emissions and subsequently an alternative Vehicle Excise Duty (VED) Band, while BIK rates paid by company car drivers may differ. This is due to the fact that different wheels have both alternative aerodynamic drag and mechanical drag, resulting in different rolling resistance and wind resistance. As a result, the VED Band that the vehicle falls into may differ from its original VED Band when fitted with standard size wheels. In some instances, the recommended ‘On the road’ retail price paid for the vehicle may change as a result of the change in VED rate. The chart below shows CO<sub>2</sub> emissions and the related VED Bands for vehicles with both standard-fit wheels and larger optional alloy wheels, as well as the different cost payable due to a change in VED Band if applicable.

4-DOOR SALOON RANGE.			RDE2 Compliant	Output, PS	Standard wheel size	CO <sub>2</sub> emission, g/km <sup>1</sup> , WLTP test cycle, standard wheels	First year VED £, standard wheels	BIK % with standard wheel size <sup>2</sup>	Optional alloy wheel and size	CO <sub>2</sub> emission, g/km <sup>1</sup> , WLTP test cycle, optional wheel	First year VED £, optional wheels	BIK % with optional wheel size <sup>2</sup>
SE NAV <sup>‡</sup>	1.5 ltr TSI EVO <sup>†</sup>	6-spd manual	Yes	150	17"	138	220.00	31	17" Soho Anthracite	138	220.00	31
				150	17"	138	220.00	31	17" London	139	220.00	31
				150	17"	138	220.00	31	18" Oxford	141	220.00	32
	1.5 ltr TSI EVO <sup>†</sup>	7-spd auto DSG	Yes	150	17"	141	220.00	32	17" Soho Anthracite, 17" London	141	220.00	32
				150	17"	141	220.00	32	18" Oxford	144	220.00	32
	2.0 ltr TDI EVO SCR <sup>‡</sup>	7-spd auto DSG	Yes	122	17"	124	180.00	28	17" London, 17" Soho Anthracite	124	180.00	28
				122	17"	124	180.00	28	18" Oxford	127	180.00	29
	2.0 ltr TDI EVO SCR <sup>‡</sup>	6-spd manual	Yes	150	17"	123	180.00	28	17" London, 17" Soho Anthracite	124	180.00	28
				150	17"	123	180.00	28	18" Oxford	126	180.00	29
	2.0 ltr TDI EVO SCR <sup>‡</sup>	7-spd auto DSG	Yes	150	17"	123	180.00	28	17" London, 17" Soho Anthracite	123	180.00	28
				150	17"	123	180.00	28	18" Oxford	126	180.00	29

1 Figures for the Volkswagen Passat range, including petrol, diesel and hybrid vehicles. Plug-in hybrid vehicles require mains electricity for charging. Figures for hybrid vehicles were obtained using a combination of battery power and fuel. Figures shown are for comparability purposes; only compare fuel consumption, CO<sub>2</sub> and electric range figures with other vehicles tested to the same technical procedures. These figures may not reflect real life driving results, which will depend upon a number of factors including the accessories fitted (post-registration), variations in weather, driving styles and vehicle load. Data correct at 1.7.2021. Figures quoted are for a range of configurations (including non-UK) and are subject to change due to ongoing approvals/changes. For more information, please see [www.volkswagen.co.uk/need-help/wltp](http://www.volkswagen.co.uk/need-help/wltp) or consult your authorised Volkswagen retailer.

2 The BIK charges quoted reflect the charges which apply to vehicles registered after 6 April 2021. These charges may differ from any charges displayed or quoted before 6 April 2021. The BIK % figure quoted includes the 4% diesel supplement, where applicable. Please note: the increase in VED and BIK rate that is payable is in addition to the cost of the optional alloy wheels. Please consult your Volkswagen retailer for full details.

‡ These vehicles are WLTP (Worldwide Harmonised Light-Duty Vehicles Test Procedure) type approved vehicles. More information is available at [www.volkswagen.co.uk/need-help/wltp](http://www.volkswagen.co.uk/need-help/wltp).

† Please note these models may no longer be available to order, or only be available from stock and not available to factory order.

SCR (Selective Catalytic Reduction) requires AdBlue®, [please click here](#) or visit [www.volkswagen.co.uk/technology/engines/adblue](http://www.volkswagen.co.uk/technology/engines/adblue) for more details.

RDE2 refers to Real Driving Emissions Step 2.

VAT IS CALCULATED AT 20%. EFFECTIVE FROM 1 JULY 2021.





# CO<sub>2</sub> emissions, BIK % and VED Bands with optional wheels – Passat.

## Effect of wheel size on CO<sub>2</sub> emissions, BIK % and VED Bands.

Choosing alternative alloy wheels than standard, as an option, may result in different fuel consumption as well as different CO<sub>2</sub> emissions and subsequently an alternative Vehicle Excise Duty (VED) Band, while BIK rates paid by company car drivers may differ. This is due to the fact that different wheels have both alternative aerodynamic drag and mechanical drag, resulting in different rolling resistance and wind resistance. As a result, the VED Band that the vehicle falls into may differ from its original VED Band when fitted with standard size wheels. In some instances, the recommended ‘On the road’ retail price paid for the vehicle may change as a result of the change in VED rate. The chart below shows CO<sub>2</sub> emissions and the related VED Bands for vehicles with both standard-fit wheels and larger optional alloy wheels, as well as the different cost payable due to a change in VED Band if applicable.

4-DOOR SALOON RANGE.			RDE2 Compliant	Output, PS	Standard wheel size	CO <sub>2</sub> emission, g/km <sup>1</sup> , WLTP test cycle, standard wheels	First year VED £, standard wheels	BIK % with standard wheel size <sup>2</sup>	Optional alloy wheel and size	CO <sub>2</sub> emission, g/km <sup>1</sup> , WLTP test cycle, optional wheel	First year VED £, optional wheels	BIK % with optional wheel size <sup>2</sup>
R-LINE	1.5 ltr TSI EVO ‡	6-spd manual	Yes	150	18"	142	220.00	32	18" Wolverton Black diamond-turned	141	220.00	32
				150	18"	142	220.00	32	19" Pretoria Dark Graphite	146	220.00	33
	1.5 ltr TSI EVO ‡	7-spd auto DSG	Yes	150	18"	145	220.00	33	18" Wolverton Black diamond-turned	145	220.00	33
				150	18"	145	220.00	33	19" Pretoria Dark Graphite	149	220.00	33
	2.0 ltr TDI EVO SCR ‡	6-spd manual	Yes	150	18"	126	180.00	29	18" Wolverton Black diamond-turned	127	180.00	29
				150	18"	126	180.00	29	19" Pretoria Dark Graphite	130	180.00	30
	2.0 ltr TDI EVO SCR ‡	7-spd auto DSG	Yes	150	18"	126	180.00	29	18" Wolverton Black diamond-turned	126	180.00	29
				150	18"	126	180.00	29	19" Pretoria Dark Graphite	130	180.00	30
	2.0 ltr TDI SCR ‡	7-spd auto DSG	Yes	200	18"	137	220.00	31	18" Wolverton Black diamond-turned	137	220.00	31
				200	18"	137	220.00	31	19" Pretoria Dark Graphite	141	220.00	32

1 Figures for the Volkswagen Passat range, including petrol, diesel and hybrid vehicles. Plug-in hybrid vehicles require mains electricity for charging. Figures for hybrid vehicles were obtained using a combination of battery power and fuel. Figures shown are for comparability purposes; only compare fuel consumption, CO<sub>2</sub> and electric range figures with other vehicles tested to the same technical procedures. These figures may not reflect real life driving results, which will depend upon a number of factors including the accessories fitted (post-registration), variations in weather, driving styles and vehicle load. Data correct at 1.7.2021. Figures quoted are for a range of configurations (including non-UK) and are subject to change due to ongoing approvals/changes. For more information, please see [www.volkswagen.co.uk/need-help/wltp](http://www.volkswagen.co.uk/need-help/wltp) or consult your authorised Volkswagen retailer.

2 The BIK charges quoted reflect the charges which apply to vehicles registered after 6 April 2021. These charges may differ from any charges displayed or quoted before 6 April 2021. The BIK % figure quoted includes the 4% diesel supplement, where applicable. Please note: the increase in VED and BIK rate that is payable is in addition to the cost of the optional alloy wheels. Please consult your Volkswagen retailer for full details.

‡ These vehicles are WLTP (Worldwide Harmonised Light-Duty Vehicles Test Procedure) type approved vehicles. More information is available at [www.volkswagen.co.uk/need-help/wltp](http://www.volkswagen.co.uk/need-help/wltp). SCR (Selective Catalytic Reduction) requires AdBlue®, [please click here](#) or visit [www.volkswagen.co.uk/technology/engines/adblue](http://www.volkswagen.co.uk/technology/engines/adblue) for more details.

RDE2 refers to Real Driving Emissions Step 2.

For detailed information regarding tyre efficiency labelling and technical specifications on all potential tyre fitments, visit the Volkswagen online car configurator at [www.volkswagen.co.uk](http://www.volkswagen.co.uk) or consult your authorised Volkswagen retailer.

VAT IS CALCULATED AT 20%. EFFECTIVE FROM 1 JULY 2021.

# CO<sub>2</sub> emissions, BIK % and VED Bands with optional wheels – Passat.

## Effect of wheel size on CO<sub>2</sub> emissions, BIK % and VED Bands.

Choosing alternative alloy wheels than standard, as an option, may result in different fuel consumption as well as different CO<sub>2</sub> emissions and subsequently an alternative Vehicle Excise Duty (VED) Band, while BIK rates paid by company car drivers may differ. This is due to the fact that different wheels have both alternative aerodynamic drag and mechanical drag, resulting in different rolling resistance and wind resistance. As a result, the VED Band that the vehicle falls into may differ from its original VED Band when fitted with standard size wheels. In some instances, the recommended ‘On the road’ retail price paid for the vehicle may change as a result of the change in VED rate. The chart below shows CO<sub>2</sub> emissions and the related VED Bands for vehicles with both standard-fit wheels and larger optional alloy wheels, as well as the different cost payable due to a change in VED Band if applicable.

PETROL/ELECTRIC HYBRID 4-DOOR SALOON RANGE.			RDE Compliant	Combined output, PS	Standard wheel size	CO <sub>2</sub> emission, g/km <sup>1</sup> , WLTP test cycle, standard wheels	First year VED £, standard wheels	BIK % with standard wheel size <sup>2</sup>	Optional alloy wheel and size	CO <sub>2</sub> emission, g/km <sup>1</sup> , WLTP test cycle, optional wheel	First year VED £, optional wheels	BIK % with optional wheel size <sup>2</sup>
GTE <sup>‡</sup>	1.4 ltr TSI PHEV <sup>‡</sup>	6-spd auto DSG	Yes	218	17"	24	0.00	7	18" Oxford	26	0.00	7
GTE ADVANCE <sup>‡</sup>	1.4 ltr TSI PHEV <sup>‡</sup>	6-spd auto DSG	Yes	218	18"	26	0.00	11	18" Oxford, 18" Wolverton Black diamond-turned	26	0.00	11

1 Figures for the Volkswagen Passat range, including petrol, diesel and hybrid vehicles. Plug-in hybrid vehicles require mains electricity for charging. Figures for hybrid vehicles were obtained using a combination of battery power and fuel. Figures shown are for comparability purposes; only compare fuel consumption, CO<sub>2</sub> and electric range figures with other vehicles tested to the same technical procedures. These figures may not reflect real life driving results, which will depend upon a number of factors including the accessories fitted (post-registration), variations in weather, driving styles and vehicle load. Data correct at 1.7.2021. Figures quoted are for a range of configurations (including non-UK) and are subject to change due to ongoing approvals/changes. For more information, please see [www.volkswagen.co.uk/need-help/wltp](http://www.volkswagen.co.uk/need-help/wltp) or consult your authorised Volkswagen retailer.

2 The BIK charges quoted reflect the charges which apply to vehicles registered after 6 April 2021. These charges may differ from any charges displayed or quoted before 6 April 2021. The BIK % figure quoted includes the 4% diesel supplement, where applicable. Please note: the increase in VED and BIK rate that is payable is in addition to the cost of the optional alloy wheels. Please consult your Volkswagen retailer for full details.

‡ These vehicles are WLTP (Worldwide Harmonised Light-Duty Vehicles Test Procedure) type approved vehicles. More information is available at [www.volkswagen.co.uk/need-help/wltp](http://www.volkswagen.co.uk/need-help/wltp).

RDE2 refers to Real Driving Emissions Step 2.

For detailed information regarding tyre efficiency labelling and technical specifications on all potential tyre fitments, visit the Volkswagen online car configurator at [www.volkswagen.co.uk](http://www.volkswagen.co.uk) or consult your authorised Volkswagen retailer.

VAT IS CALCULATED AT 20%. EFFECTIVE FROM 1 JULY 2021.



# CO<sub>2</sub> emissions, BIK % and VED Bands with optional wheels – Passat Estate.

## Effect of wheel size on CO<sub>2</sub> emissions, BIK % and VED Bands.

Choosing alternative alloy wheels than standard, as an option, may result in different fuel consumption as well as different CO<sub>2</sub> emissions and subsequently an alternative Vehicle Excise Duty (VED) Band, while BIK rates paid by company car drivers may differ. This is due to the fact that different wheels have both alternative aerodynamic drag and mechanical drag, resulting in different rolling resistance and wind resistance. As a result, the VED Band that the vehicle falls into may differ from its original VED Band when fitted with standard size wheels. In some instances, the recommended ‘On the road’ retail price paid for the vehicle may change as a result of the change in VED rate. The chart below shows CO<sub>2</sub> emissions and the related VED Bands for vehicles with both standard-fit wheels and larger optional alloy wheels, as well as the different cost payable due to a change in VED Band if applicable.

5-DOOR ESTATE RANGE.			RDE2 Compliant	Output, PS	Standard wheel size	CO <sub>2</sub> emission, g/km <sup>1</sup> , WLTP test cycle, standard wheels	First year VED £, standard wheels	BIK % with standard wheel size <sup>2</sup>	Optional alloy wheel and size	CO <sub>2</sub> emission, g/km <sup>1</sup> , WLTP test cycle, optional wheel	First year VED £, optional wheels	BIK % with optional wheel size <sup>2</sup>
SE NAV <sup>‡</sup>	1.5 ltr TSI EVO <sup>‡</sup>	6-spd manual	Yes	150	17"	143	220.00	32	17" London, 17" Soho Anthracite	143	220.00	32
				150	17"	143	220.00	32	18" Oxford	146	220.00	33
	1.5 ltr TSI EVO <sup>‡</sup>	7-spd auto DSG	Yes	150	17"	146	220.00	33	17" London, 17" Soho Anthracite	146	220.00	33
				150	17"	146	220.00	33	18" Oxford	149	220.00	33
	2.0 ltr TDI EVO SCR <sup>‡</sup>	7-spd auto DSG	Yes	122	17"	127	180.00	29	17" London, 17" Soho Anthracite	128	180.00	29
				122	17"	127	180.00	29	18" Oxford	130	180.00	30
	2.0 ltr TDI EVO SCR <sup>‡</sup>	6-spd manual	Yes	150	17"	127	180.00	29	17" London, 17" Soho Anthracite	128	180.00	29
				150	17"	127	180.00	29	18" Oxford	130	180.00	30
	2.0 ltr TDI EVO SCR <sup>‡</sup>	7-spd auto DSG	Yes	150	17"	127	180.00	29	17" London, 17" Soho Anthracite	127	180.00	29
				150	17"	127	180.00	29	18" Oxford	130	180.00	30

1 Figures for the Volkswagen Passat range, including petrol, diesel and hybrid vehicles. Plug-in hybrid vehicles require mains electricity for charging. Figures for hybrid vehicles were obtained using a combination of battery power and fuel. Figures shown are for comparability purposes; only compare fuel consumption, CO<sub>2</sub> and electric range figures with other vehicles tested to the same technical procedures. These figures may not reflect real life driving results, which will depend upon a number of factors including the accessories fitted (post-registration), variations in weather, driving styles and vehicle load. Data correct at 1.7.2021. Figures quoted are for a range of configurations (including non-UK) and are subject to change due to ongoing approvals/changes. For more information, please see [www.volkswagen.co.uk/need-help/wltp](http://www.volkswagen.co.uk/need-help/wltp) or consult your authorised Volkswagen retailer.

2 The BIK charges quoted reflect the charges which apply to vehicles registered after 6 April 2021. These charges may differ from any charges displayed or quoted before 6 April 2021. The BIK % figure quoted includes the 4% diesel supplement, where applicable. Please note: the increase in VED and BIK rate that is payable is in addition to the cost of the optional alloy wheels. Please consult your Volkswagen retailer for full details.

‡ These vehicles are WLTP (Worldwide Harmonised Light-Duty Vehicles Test Procedure) type approved vehicles. More information is available at [www.volkswagen.co.uk/need-help/wltp](http://www.volkswagen.co.uk/need-help/wltp).

† Please note these models may no longer be available to order, or only be available from stock and not available to factory order.

SCR (Selective Catalytic Reduction) requires AdBlue®, [please click here](#) or visit [www.volkswagen.co.uk/technology/engines/adblue](http://www.volkswagen.co.uk/technology/engines/adblue) for more details.

RDE2 refers to Real Driving Emissions Step 2.

For detailed information regarding tyre efficiency labelling and technical specifications on all potential tyre fitments, visit the Volkswagen online car configurator at [www.volkswagen.co.uk](http://www.volkswagen.co.uk) or consult your authorised Volkswagen retailer.

VAT IS CALCULATED AT 20%. EFFECTIVE FROM 1 JULY 2021.

# CO<sub>2</sub> emissions, BIK % and VED Bands with optional wheels – Passat Estate.

## Effect of wheel size on CO<sub>2</sub> emissions, BIK % and VED Bands.

Choosing alternative alloy wheels than standard, as an option, may result in different fuel consumption as well as different CO<sub>2</sub> emissions and subsequently an alternative Vehicle Excise Duty (VED) Band, while BIK rates paid by company car drivers may differ. This is due to the fact that different wheels have both alternative aerodynamic drag and mechanical drag, resulting in different rolling resistance and wind resistance. As a result, the VED Band that the vehicle falls into may differ from its original VED Band when fitted with standard size wheels. In some instances, the recommended ‘On the road’ retail price paid for the vehicle may change as a result of the change in VED rate. The chart below shows CO<sub>2</sub> emissions and the related VED Bands for vehicles with both standard-fit wheels and larger optional alloy wheels, as well as the different cost payable due to a change in VED Band if applicable.

5-DOOR ESTATE RANGE.			RDE2 Compliant	Output, PS	Standard wheel size	CO <sub>2</sub> emission, g/km <sup>1</sup> , WLTP test cycle, standard wheels	First year VED £, standard wheels	BIK % with standard wheel size <sup>2</sup>	Optional alloy wheel and size	CO <sub>2</sub> emission, g/km <sup>1</sup> , WLTP test cycle, optional wheel	First year VED £, optional wheels	BIK % with optional wheel size <sup>2</sup>
SEL ‡	1.5 ltr TSI EVO ‡	6-spd manual	Yes	150	17"	143	220.00	32	17" London, 17" Soho Anthracite	143	220.00	32
				150	17"	143	220.00	32	18" Oxford	146	220.00	33
	1.5 ltr TSI EVO ‡	7-spd auto DSG	Yes	150	17"	146	220.00	33	17" London, 17" Soho Anthracite	147	220.00	33
				150	17"	146	220.00	33	18" Oxford	149	220.00	33
	2.0 ltr TDI EVO SCR ‡	7-spd auto DSG	Yes	122	17"	128	180.00	29	17" London, 17" Soho Anthracite	128	180.00	29
				122	17"	128	180.00	29	18" Oxford	130	180.00	30
	2.0 ltr TDI EVO SCR ‡	6-spd manual	Yes	150	17"	128	180.00	29	17" London, 17" Soho Anthracite	128	180.00	29
				150	17"	128	180.00	29	18" Oxford	130	180.00	30
	2.0 ltr TDI EVO SCR ‡	7-spd auto DSG	Yes	150	17"	127	180.00	29	17" Soho Anthracite	127	180.00	29
				150	17"	127	180.00	29	17" London	128	180.00	29
				150	17"	127	180.00	29	18" Oxford	130	180.00	30

1 Figures for the Volkswagen Passat range, including petrol, diesel and hybrid vehicles. Plug-in hybrid vehicles require mains electricity for charging. Figures for hybrid vehicles were obtained using a combination of battery power and fuel. Figures shown are for comparability purposes; only compare fuel consumption, CO<sub>2</sub> and electric range figures with other vehicles tested to the same technical procedures. These figures may not reflect real life driving results, which will depend upon a number of factors including the accessories fitted (post-registration), variations in weather, driving styles and vehicle load. Data correct at 1.7.2021. Figures quoted are for a range of configurations (including non-UK) and are subject to change due to ongoing approvals/changes. For more information, please see [www.volkswagen.co.uk/need-help/wltp](http://www.volkswagen.co.uk/need-help/wltp) or consult your authorised Volkswagen retailer.

2 The BIK charges quoted reflect the charges which apply to vehicles registered after 6 April 2021. These charges may differ from any charges displayed or quoted before 6 April 2021. The BIK % figure quoted includes the 4% diesel supplement, where applicable. Please note: the increase in VED and BIK rate that is payable is in addition to the cost of the optional alloy wheels. Please consult your Volkswagen retailer for full details.

‡ These vehicles are WLTP (Worldwide Harmonised Light-Duty Vehicles Test Procedure) type approved vehicles. More information is available at [www.volkswagen.co.uk/need-help/wltp](http://www.volkswagen.co.uk/need-help/wltp). SCR (Selective Catalytic Reduction) requires AdBlue®, [please click here](#) or visit [www.volkswagen.co.uk/technology/engines/adblue](http://www.volkswagen.co.uk/technology/engines/adblue) for more details. RDE2 refers to Real Driving Emissions Step 2.

For detailed information regarding tyre efficiency labelling and technical specifications on all potential tyre fitments, visit the Volkswagen online car configurator at [www.volkswagen.co.uk](http://www.volkswagen.co.uk) or consult your authorised Volkswagen retailer.

VAT IS CALCULATED AT 20%. EFFECTIVE FROM 1 JULY 2021.





# CO<sub>2</sub> emissions, BIK % and VED Bands with optional wheels – Passat Estate.

## Effect of wheel size on CO<sub>2</sub> emissions, BIK % and VED Bands.

Choosing alternative alloy wheels than standard, as an option, may result in different fuel consumption as well as different CO<sub>2</sub> emissions and subsequently an alternative Vehicle Excise Duty (VED) Band, while BIK rates paid by company car drivers may differ. This is due to the fact that different wheels have both alternative aerodynamic drag and mechanical drag, resulting in different rolling resistance and wind resistance. As a result, the VED Band that the vehicle falls into may differ from its original VED Band when fitted with standard size wheels. In some instances, the recommended ‘On the road’ retail price paid for the vehicle may change as a result of the change in VED rate. The chart below shows CO<sub>2</sub> emissions and the related VED Bands for vehicles with both standard-fit wheels and larger optional alloy wheels, as well as the different cost payable due to a change in VED Band if applicable.

PETROL/ELECTRIC HYBRID 5-DOOR ESTATE RANGE.			RDE Compliant	Combined output, PS	Standard wheel size	CO <sub>2</sub> emission, g/km <sup>1</sup> , WLTP test cycle, standard wheels	First year VED £, standard wheels	BIK % with standard wheel size <sup>2</sup>	Optional alloy wheel and size	CO <sub>2</sub> emission, g/km <sup>1</sup> , WLTP test cycle, optional wheel	First year VED £, optional wheels	BIK % with optional wheel size <sup>2</sup>
GTE ‡	1.4 ltr TSI PHEV ‡	6-spd auto DSG	Yes	218	17"	26	0.00	11	18" Oxford	28	TBA	TBA
GTE ADVANCE ‡	1.4 ltr TSI PHEV ‡	6-spd auto DSG	Yes	218	18"	28	0.00	11	18" Oxford	28	0.00	11
	1.4 ltr TSI PHEV ‡	6-spd auto DSG	Yes	218	18"	28	0.00	11	18" Wolverton Black diamond-turned	28	0.00	11

1 Figures for the Volkswagen Passat range, including petrol, diesel and hybrid vehicles. Plug-in hybrid vehicles require mains electricity for charging. Figures for hybrid vehicles were obtained using a combination of battery power and fuel. Figures shown are for comparability purposes; only compare fuel consumption, CO<sub>2</sub> and electric range figures with other vehicles tested to the same technical procedures. These figures may not reflect real life driving results, which will depend upon a number of factors including the accessories fitted (post-registration), variations in weather, driving styles and vehicle load. Data correct at 1.7.2021. Figures quoted are for a range of configurations (including non-UK) and are subject to change due to ongoing approvals/changes. For more information, please see [www.volkswagen.co.uk/need-help/wltp](http://www.volkswagen.co.uk/need-help/wltp) or consult your authorised Volkswagen retailer.

2 The BIK charges quoted reflect the charges which apply to vehicles registered after 6 April 2021. These charges may differ from any charges displayed or quoted before 6 April 2021. The BIK % figure quoted includes the 4% diesel supplement, where applicable. Please note: the increase in VED and BIK rate that is payable is in addition to the cost of the optional alloy wheels. Please consult your Volkswagen retailer for full details.

‡ These vehicles are WLTP (Worldwide Harmonised Light-Duty Vehicles Test Procedure) type approved vehicles. More information is available at [www.volkswagen.co.uk/need-help/wltp](http://www.volkswagen.co.uk/need-help/wltp).

† Please note these models may no longer be available to order, or only be available from stock and not available to factory order.

RDE2 refers to Real Driving Emissions Step 2.

For detailed information regarding tyre efficiency labelling and technical specifications on all potential tyre fitments, visit the Volkswagen online car configurator at [www.volkswagen.co.uk](http://www.volkswagen.co.uk) or consult your authorised Volkswagen retailer.

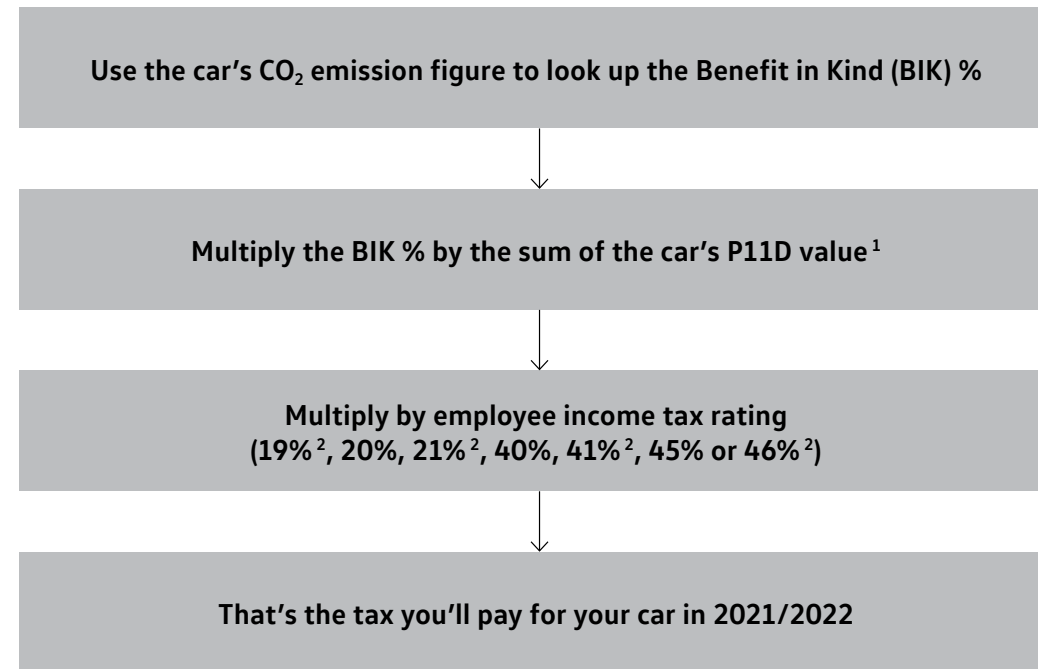
VAT IS CALCULATED AT 20%. EFFECTIVE FROM 1 JULY 2021.



# Company car taxation chart – tax year 2021/22.

[Configure now >](#)


## How to calculate your company car income tax liability – effective 6.4.2021



The government is retaining the diesel supplement in company car tax until 2021, when EU-wide testing procedures will ensure new diesel cars meet air quality standards even under strict 'real world' driving conditions. In the 2017 Autumn Budget the Chancellor announced that there will be a new VED supplement on new diesel cars first registered from 1 April 2018 adding 4% to their appropriate percentage if the car is propelled solely by diesel (up to a maximum of 37%), so that their First-Year Rate will be calculated as if they were in the VED band above. However, this will not apply on those diesel cars which meet Real Driving Emissions Step 2 (RDE2) standards.

For further details of company car tax, please consult your authorised Volkswagen retailer, or visit [www.volkswagen.co.uk/offers-and-finance/fleet/calculators/company-car-tax-calculator](http://www.volkswagen.co.uk/offers-and-finance/fleet/calculators/company-car-tax-calculator). Full details can be found at [www.assets.publishing.service.gov.uk/government/uploads/system/uploads/attachment\\_data/file/815268/190617\\_-\\_WLTP\\_-\\_summary\\_of\\_responses\\_v2.2.pdf](http://www.assets.publishing.service.gov.uk/government/uploads/system/uploads/attachment_data/file/815268/190617_-_WLTP_-_summary_of_responses_v2.2.pdf)

<sup>1</sup> P11D values given in this price list are based on standard specification models with no factory-fitted options or other accessories. If your car includes factory-fitted options or other accessories, you may need to adjust the P11D value to take this into account.

<sup>2</sup> From 6 April 2018, new income tax rates have been introduced for Scottish Taxpayers, these figures reflect the new Scottish rates. For full details of Scottish BIK tax liability, please refer to the [Benefit In Kind for Scottish Residents section](#)

Emissions CO <sub>2</sub> (g/km)	2021/22 Benefit in Kind % (BIK)				2022/23 and 2023/24 Benefit in Kind % (BIK)			
	Petrol and Diesel RDE2	Diesel RDE	Electric range, miles	Alternative fuel	Petrol and Diesel RDE2	Diesel RDE	Electric range miles	Alternative fuel
0 (BEV)								
1-50	13%	17%	130 or above	1%	14%	18%	130 or above	2%
1-50	13%	17%	70-129	4%	14%	18%	70-129	5%
1-50	13%	17%	40-69	7%	14%	18%	40-69	8%
1-50	13%	17%	30-39	11%	14%	18%	30-39	12%
1-50	13%	17%	1-29	13%	14%	18%	1-29	14%
51-54	14%	18%		14%	15%	19%		15%
55-59	15%	19%		15%	16%	20%		16%
60-64	16%	20%		16%	17%	21%		17%
65-69	17%	21%		17%	18%	22%		18%
70-74	18%	22%		18%	19%	23%		19%
75-79	19%	23%		19%	20%	24%		20%
80-84	20%	24%		20%	21%	25%		21%
85-89	21%	25%		21%	22%	26%		22%
90-94	22%	26%		22%	23%	27%		23%
95-99	23%	27%		23%	24%	28%		24%
100-104	24%	28%		24%	25%	29%		25%
105-109	25%	29%		25%	26%	30%		26%
110-114	26%	30%		26%	27%	31%		27%
115-119	27%	31%		27%	28%	32%		28%
120-124	28%	32%		28%	29%	33%		29%
125-129	29%	33%		29%	30%	34%		30%
130-134	30%	34%		30%	31%	35%		31%
135-139	31%	35%		31%	32%	36%		32%
140-144	32%	36%		32%	33%	37%		33%
145-149	33%	37%		33%	34%	37%		34%
150-154	34%	37%		34%	35%	37%		35%
155-159	35%	37%		35%	36%	37%		36%
160-164	36%	37%		36%	37%	37%		37%
165-169	37%	37%		37%	37%	37%		37%
170+	37%	37%		37%	37%	37%		37%

Taxable percentage of P11D value (Diesel RDE figures include the 4% diesel supplement)

The Passat and Passat Estate	Model prices	Standard equipment	Driver's assistance systems	Infotainment and connectivity	Factory-fitted options	Accessories	Alloy wheels	Paint	Upholstery and decorative inserts	Combinations	Dimensions	AdBlue®	VED and additional 'On the road' costs	Environmental information	CO <sub>2</sub> , BIK % and VED Bands with optional wheels	<a href="#">Company car taxation chart and comparison</a>	Volkswagen service and service plan
------------------------------	--------------	--------------------	-----------------------------	-------------------------------	------------------------	-------------	--------------	-------	-----------------------------------	--------------	------------	---------	--	---------------------------	--	---	-------------------------------------



# Company car taxation comparison.

## 3-year taxation comparison guide.

PASSAT SALOON.			RDE2 Compliant	Output, PS	CO <sub>2</sub> emission, g/km <sup>1</sup> WLTP test cycle	Basic Recommended Retail £	VAT £	Total Recommended Retail £	Tax year commencing	P11D Value £ <sup>2</sup>	BIK <sup>3</sup>	Annual cost at 20 <sup>4</sup> tax rate £	Annual cost at 40 <sup>4</sup> tax rate £
SE NAV <sup>‡</sup>	1.5 ltr TSI EVO <sup>‡</sup>	6-spd manual	Yes	150	138	22,366.67	4,473.33	26,840.00	2021/22	27,475.00	31	1,703.45	3,406.90
									2022/23	27,475.00	32	1,758.40	3,516.80
									2023/24	27,475.00	32	1,758.40	3,516.80
R-LINE <sup>‡</sup>	2.0 ltr TDI EVO SCR <sup>‡</sup>	7-spd auto DSG	Yes	150	126	28,612.50	5,722.50	34,335.00	2021/22	34,970.00	29	2,028.26	4,056.52
									2022/23	34,970.00	30	2,098.20	4,196.40
									2023/24	34,970.00	30	2,098.20	4,196.40
PASSAT ESTATE.													
SE NAV <sup>‡</sup>	1.5 ltr TSI EVO <sup>‡</sup>	6-spd manual	Yes	150	143	24,266.67	4,853.33	29,120.00	2021/22	29,755.00	32	1,904.32	3,808.64
									2022/23	29,755.00	33	1,963.83	3,927.66
									2023/24	29,755.00	33	1,963.83	3,927.66
R-LINE <sup>‡</sup>	2.0 ltr TDI EVO SCR <sup>‡</sup>	7-spd auto DSG	Yes	150	131	30,512.50	6,102.50	36,615.00	2021/22	37,250.00	30	2,235.00	4,470.00
									2022/23	37,250.00	31	2,309.50	4,619.00
									2023/24	37,250.00	31	2,309.50	4,619.00

1 Figures for the Volkswagen Passat range, including petrol, diesel and hybrid vehicles. Plug-in hybrid vehicles require mains electricity for charging. Figures for hybrid vehicles were obtained using a combination of battery power and fuel. Figures shown are for comparability purposes; only compare fuel consumption, CO<sub>2</sub> and electric range figures with other vehicles tested to the same technical procedures. These figures may not reflect real life driving results, which will depend upon a number of factors including the accessories fitted (post-registration), variations in weather, driving styles and vehicle load. Data correct at 1.7.2021. Figures quoted are for a range of configurations (including non-UK) and are subject to change due to ongoing approvals/changes. For more information, please see [www.volkswagen.co.uk/need-help/wltp](http://www.volkswagen.co.uk/need-help/wltp) or consult your authorised Volkswagen retailer.

2 P11D value = Total recommended retail price + delivery to retailer £509.17, + number plates £20, + VAT £105.83 (calculated by reference to total of delivery to retailer + number plates). P11D value is based on standard specification model with no factory-fitted options or other accessories.

3 The BIK charges quoted reflect the charges which apply to vehicles registered after 6 April 2021. These charges may differ from any charges displayed or quoted before 6 April 2021. The BIK figure quoted includes the 4 diesel supplement, where applicable. Please consult your Volkswagen retailer for full details.

4 From 6 April 2018, new income tax rates have been introduced for Scottish Taxpayers. For full details of Scottish BIK tax liability, please refer to the [Benefit In Kind for Scottish Residents section](#)

‡ These vehicles are WLTP (Worldwide Harmonised Light-Duty Vehicles Test Procedure) type approved vehicles. More information is available at [www.volkswagen.co.uk/need-help/wltp](http://www.volkswagen.co.uk/need-help/wltp).

All examples are for manual derivatives unless otherwise stated. RDE2 refers to Real Driving Emissions Step 2.

**Volkswagen UK may change RRP's at any time (this includes where there are government changes in regulation and/or legislation).**

**There may be a delay to any RRP displaying correctly on our materials. Always obtain prices from your chosen authorised Volkswagen retailer.**

VAT IS CALCULATED AT 20%. EFFECTIVE FROM 1 JULY 2021.



# Volkswagen service.

Configure now >



## VOLKSWAGEN FINANCE<sup>1</sup>

Volkswagen Finance specialises in providing funding solutions for Volkswagen drivers. Whether your Volkswagen is for private or business use, you can choose from a range of funding options.

### Solutions – a Personal Contract Plan

Flexible finance plan designed to allow you to drive a new vehicle sooner than you think. At the end of your agreement you can choose to trade in your Volkswagen for a new one, keep it, or hand it back.

### Hire Purchase

A simple and straightforward way to finance your Volkswagen. Have the option to break down your monthly payments over a period that suits you, making financing your car much more manageable than you think.

### Contract Hire

Available for both personal and business customers. Ideal for customers simply wanting to pay a monthly rental for the vehicle, change it on a regular fixed period and have no disposal risk.

- Lease Purchase
- Finance Lease

With all Volkswagen Finance products you can choose a fixed-cost maintenance plan to help you budget for your servicing and maintenance costs. Buy your service plan online or visit your local Volkswagen retailer for more information.



## VOLKSWAGEN INSURANCE<sup>2</sup>

We want you to start enjoying your new car from day one, and thanks to our complimentary five day Volkswagen Drive Away Insurance you can. Please visit [www.insurewithvolkswagen.co.uk/driveaway](http://www.insurewithvolkswagen.co.uk/driveaway) to activate your cover. If eligible, we will also give you a quotation for our annual insurance, designed specifically for Volkswagen drivers.

## ANNUAL CAR INSURANCE

Volkswagen car insurance helps give you peace of mind with the following benefits at no extra cost:

- Repairs carried out by Volkswagen trained technicians using Volkswagen Genuine Parts and paints when repaired by a Volkswagen approved repairer
- Guaranteed courtesy car
- Child seat replacement
- Uninsured driver promise
- Vandalism promise
- 24 hour accident recovery

For more information or to get a quote, visit [www.insurewithvolkswagen.co.uk](http://www.insurewithvolkswagen.co.uk)

## SERVICING AND MAINTENANCE

Volkswagen is pleased to offer you a choice on how your Volkswagen is serviced. The appropriate selection is entirely dependent on how the car is likely to be driven and its general use. To help you identify which type of service would be most suitable, please refer to the following guide.

### Fixed Service

The Fixed Service is recommended for vehicles that will cover less than 9,300 miles in 12 months and if the vehicle is likely to be used in the following way:

- Predominantly urban driving, short journeys with frequent cold starts.
- Activities regularly producing high engine loading, e.g. frequent hill climbs, driving with vehicle fully loaded and towing.
- Uneconomical driving style using high rpms with heavy acceleration and heavy braking.

The service intervals for the Fixed Service schedule on 2021 MY onwards are as follows:

- Oil change service – After 1 year or 9,300 miles (15,000 km), whichever is soonest.
- Inspection service<sup>3</sup> – First after 2 years or 18,600 miles (30,000 km), then every 2 years or 18,600 miles (30,000 km), whichever is soonest.

The Passat Saloon and Passat Estate GTE and GTE Advance PHEV models are only available with the Fixed Service schedule. Please consult your authorised Volkswagen retailer or repairer for advice and full details.

### Electric vehicles

Vehicles powered only by an electric motor require a Fixed Service schedule as follows:

## SERVICING AND MAINTENANCE (CONTINUED)

### Electric vehicles (continued)

- Inspection service – First after 2 years or 20,000 miles (30,000km), whichever is soonest.
- Subsequent services every 1 year or 20,000 miles (30,000km), whichever is soonest.

### Flexible Service

The Flexible Service is recommended for vehicles with daily mileage of more than 25 miles where the vehicle is driven regularly mainly on longer distance journeys. The vehicle is driven mainly at a constant speed with minimum vehicle and engine loading, minimal towing and driven in an economical manner. With the Flexible Service the vehicle can drive up to 18,600 miles<sup>4</sup> (30,000 km) or 2 years, whichever is soonest, between oil changes.

The service intervals for the Flexible Service schedule on 2021 MY onwards are as follows:

- Oil change service – According to flexible service interval display, 2 years or 18,600 miles (30,000 km), whichever is soonest.
- Inspection service<sup>3</sup> – First after 2 years or 18,600 miles (30,000 km), then every 2 years or 18,600 miles (30,000 km), whichever is soonest.

The up! model is only available with the Fixed Service schedule. Flexible Servicing is not available on BEV, PHEV or GTE models. Please consult your authorised Volkswagen retailer or repairer for advice and full details.

Please note: If you purchase a Volkswagen Fixed Price Service Plan your vehicle will follow the Fixed Service schedule.

## VOLKSWAGEN ENSURANCE<sup>5</sup>

Get three years' Volkswagen Ensurance cover for free.

Another great benefit of being a Volkswagen driver. If your Volkswagen was damaged in an accident, wouldn't you want it fixed by a Volkswagen trained technician using only Genuine Volkswagen Parts? Ensurance is Volkswagen's accident and repair cover which does exactly that. It works alongside your main comprehensive motor insurance policy no matter who you are insured with, to make sure you get the quality repair and service you would want. If you're involved in an accident or your car is stolen, just one call to us and we'll look after your claim from start to finish, ensuring your Volkswagen is restored to the highest standard.

Activate your cover and benefit from:

- A guarantee that your Volkswagen will be repaired by a Volkswagen approved repairer and Volkswagen trained technicians, using only Genuine Volkswagen Parts and paints.
- A dedicated Claims Manager who will manage your claim from start to finish, liaising with your insurer and the repairer so you don't have to.
- Help to recover any uninsured losses using our Legal Expenses Cover.
- Online claims tracking so you can keep up to date with the status of any claim.

Volkswagen Ensurance is free to all Volkswagen customers for three years and it only takes a minute to get cover.

To find out more and to activate your cover, visit [www.insurewithvolkswagen.co.uk/ensurance](http://www.insurewithvolkswagen.co.uk/ensurance)

- 1 Finance is available to 18s and over, subject to status. Terms and conditions apply. Volkswagen Finance.
- 2 Volkswagen Car Insurance is underwritten by U K Insurance Limited. Registered Office: The Wharf, Neville Street, Leeds LS1 4AZ. Registered in England and Wales number: 1179980. U K Insurance Limited is authorised by the Prudential Regulation Authority and regulated by the Financial Conduct Authority (FCA) and the Prudential Regulation Authority. Calls may be recorded. Volkswagen Financial Services is a trading name of Volkswagen Financial Services (UK) Limited ('VWFS UK'), registered in England and Wales number: 2835230 (Registered Office: Brunswick Court, Yeomans Drive, Blakelands, Milton Keynes MK14 5LR). Volkswagen Insurance Service (Great Britain) Ltd. is an appointed representative of VWFS UK. VWFS UK is authorised and regulated by the FCA, registration number: 311988. Authorisation details for both organisations can be checked on the Financial Services Register by visiting [www.fca.org.uk](http://www.fca.org.uk). VWFS UK and U K Insurance Limited are not part of the same corporate group.
- 3 The inspection service first at 2 years (or 40,000 miles) and then every second year (or 40,000 miles) has additional workscope.
- 4 The quoted mileage is based on a conversion from kilometres and is therefore unlikely to exceed circa 18,000 miles between oil changes.
- 5 Ensurance from Volkswagen Financial Services is sold and administered by Lawshield UK Limited, registered in England number: 3360532. Registered office: Lawshield House, 850 Ibis Court, Lakeside Drive, Centre Park, Warrington, Cheshire, WA1 1RL and underwritten by UK General Insurance Limited on behalf of Great Lakes Insurance SE. Great Lakes Insurance SE is a German insurance company with its headquarters at Königinstrasse 107, 80802 Munich. UK Branch office: Plantation Place, 30 Fenchurch Street, London, EC3M 3AJ. Lawshield UK Limited is authorised and regulated by the Financial Conduct Authority (FCA). Authorisation details can be checked on the FCA's register at [www.fca.org.uk](http://www.fca.org.uk). Great Lakes Insurance SE, UK Branch, is authorised by Bundesanstalt für Finanzdienstleistungsaufsicht and subject to limited regulation by the Financial Conduct Authority and Prudential Regulation Authority. Details about the extent of their regulation by the Financial Conduct Authority and Prudential Regulation Authority are available on request.



The Passat and Passat Estate

Model prices

Standard equipment

Driver's assistance systems

Infotainment and connectivity

Factory-fitted options

Accessories

Alloy wheels

Paint

Upholstery and decorative inserts

Combinations

Dimensions

AdBlue®

VED and additional 'On the road' costs

Environmental information

CO<sub>2</sub>, BIK % and VED Bands with optional wheels

Company car taxation chart and comparison

Volkswagen service and service plan



# Volkswagen service (continued).

**WARRANTY**

Exclusions and terms and conditions apply to all warranties, plans and insurance listed. For pricing and further details of Volkswagen Warranties, Service Plans and Insurance, please consult your authorised Volkswagen retailer or repairer, or visit [www.volkswagen.co.uk](http://www.volkswagen.co.uk)

**THE VOLKSWAGEN WARRANTY THREE-YEAR WARRANTY**

All Volkswagen passenger cars come with a three-year/60,000 miles warranty, which protects your car against the failure of most technical and electrical components due to manufacturing defects. This comprises a two-year manufacturer's warranty with unlimited mileage plus a further one-year/60,000 miles (whichever is soonest) Retailer Warranty<sup>1</sup>. Should the mileage exceed 60,000 miles within the first two years, the manufacturer's two-year warranty will still be valid. Full details of the three-year warranty are available from your authorised Volkswagen retailer or repairer.

**BODY PROTECTION WARRANTY**

The internal body sections and panels are covered against rusting through from the inside for 12 years. Naturally, the vehicle must be cared for in compliance with the manufacturer's operating instructions. Please consult your authorised Volkswagen retailer or repairer for full warranty details.

**THREE-YEAR PAINTWORK WARRANTY**

This latest paintwork warranty, pioneered by Volkswagen, provides you with cover on a new car. Naturally, during the warranty period the car must be cared for in compliance with the manufacturer's operating instructions. Any paintwork defects, as a result of the manufacturing process, will be rectified without charge.

**APPROVED ACCESSORIES**

A comprehensive range of accessories from alloy wheels to carpet mats is available to complement the factory-fitted option list. Volkswagen approved accessories purchased from and fitted by your authorised Volkswagen retailer at the point of vehicle sale will also benefit from the three-year vehicle warranty.

**VOLKSWAGEN BEV EIGHT-YEAR BATTERY WARRANTY**

1. A guarantee for eight years or 99,360 miles/ 160,000km (whichever is soonest), on all material or manufacturing defects.
2. Gradual reduction in battery capacity over times is integral to the nature of the component, and does not represent a defect under the terms of this guarantee, as long as the reduction in capacity is not in excess of the value specified for this vehicle in the owner's manual.
3. With the exception of the warranty term, all warranty conditions stipulated by the Volkswagen retailer selling the vehicle (prerequisites, criteria for freedom from defects, exclusions, settlement of claims, entry into force and start of extended warranty term, scope of application etc.) also apply to the high voltage battery.

**BEV AND PHEV VEHICLE HOME CHARGING**

Home charging using a domestic socket will depend on the condition and suitability of the wiring in your home. Always consult a qualified electrician before charging when using a domestic socket for the first time, or, if the socket is to be used as the primary source of charging. Domestic sockets on the same circuit as other appliances, particularly those in frequent use, will draw additional amperage which may result in a breaker switch being 'tripped'. Establishing a separate circuit for home charging will help ensure your electric vehicle is supplied with a consistent, uninterrupted current. For optimum charging, we recommend installing an electric vehicle charging point at home.

**VOLKSWAGEN BEV AND PHEV SPECIALIST RETAILER NETWORK**

GTE models are only available for sale through an authorised specialist Volkswagen retailer. These retailers have the ability to provide the highest levels of service when purchasing your GTE model. For details of your nearest authorised specialist Volkswagen retailer, please visit [www.volkswagen.co.uk](http://www.volkswagen.co.uk) for more details.

**PRICES AND SPECIFICATIONS**

The prices and specifications contained in this price list are for information purposes only as our products are continually updated and changes may be made to the prices and specifications at any time. If you require any specific feature, please consult your authorised Volkswagen retailer who is regularly updated with any change in specification. Prices and specifications are subject to change without notice.

Following the announcement of a price increase, any vehicle order which can be accepted into the factory production system before the effective date of the price increase will be supplied at the current price, even if built and delivered after the date on which the increase became effective.

*Note: We would like to advise you that telephone calls to Volkswagen Customer Care may be monitored and recorded as part of our training and quality assurance processes. All our monitoring and recording processes meet Ofcom regulations.*

**BENEFIT IN KIND (BIK) FOR SCOTTISH RESIDENTS**

Effective as of 6 April 2018, the Scottish Government introduced their own BIK taxation structure. This is only applicable to Company Car Drivers that are resident Scottish taxpayers. HMRC will continue to be responsible for the collection and management of taxes and will determine whether or not an individual is a Scottish taxpayer based on where their primary place of residence is.

**Scottish Income Tax rates and Bands 2018/19**

- Starter rate 19% over £11,850 - £13,850
- Basic rate of 20% over £13,850 - £24,000
- Intermediate rate 21% over £24,000 - £44,273
- Higher rate 41% over £44,273 - £150,000
- Top rate 46% above £150,000

**FUEL CONSUMPTION AND CO<sub>2</sub> EMISSIONS**

Fuel consumption and CO<sub>2</sub> figures are obtained under standardised EU test conditions (Directive 93/116/EEC). This allows a direct comparison between different manufacturer models but may not represent the actual fuel consumption achieved in 'real world' driving conditions. More information is available on the Volkswagen website at [www.volkswagen.co.uk](http://www.volkswagen.co.uk) and at [www.dft.gov.uk/vca](http://www.dft.gov.uk/vca). The weight of a vehicle will influence the level of CO<sub>2</sub> emissions it produces; as a result, vehicles with higher levels of specification and factory-fitted options may emit higher levels of CO<sub>2</sub>. Choosing larger alloy wheels than those fitted as standard may result in increased fuel consumption as well as higher CO<sub>2</sub> emissions and subsequently an increased Vehicle Excise Duty (VED) band. BIK rates paid by company car drivers may also increase. In some instances, the recommended 'On the road' retail price paid for a vehicle may increase as a result of the increased VED rate. CO<sub>2</sub> is the main greenhouse gas responsible for global warming. The specifications contained in this brochure are for information purposes only and are subject to change.

**VOLKSWAGEN ROADSIDE ASSISTANCE**

Every new car is registered for Volkswagen Roadside Assistance for one year except the Touareg which is registered for three years. This provides vehicle roadside and home recovery in the unlikely event of a breakdown in the UK and Europe (subject to conditions). Volkswagen Roadside Assistance can also be purchased for subsequent years.

Exclusions and terms and conditions apply. For pricing and further details of Volkswagen Roadside Assistance, please consult your authorised Volkswagen retailer, or visit [www.volkswagen.co.uk](http://www.volkswagen.co.uk)

**ADBLUE®**

Diesel engines with SCR (Selective Catalytic Reduction) technology require AdBlue® which must be kept topped up. Please see [www.volkswagen.co.uk/technology/engines/adblue](http://www.volkswagen.co.uk/technology/engines/adblue) for more details.



1 All warranty work must be completed by an authorised Volkswagen retailer or repairer.



# Volkswagen service plan.

An additional way to keep your perfect car, perfect for longer.

Exclusions and terms apply, [please click here](#) for more details. For pricing and further details of the Volkswagen Service Plan, please consult your authorised Volkswagen retailer or visit [www.volkswagen.co.uk](#)

## Volkswagen Service Plan – retail sales only

We offer Volkswagen Service Plans to cover all new models for their first two consecutive services in line with the Fixed Service schedule required on the vehicle. Your car will be in the hands of Volkswagen trained technicians who use specialist Volkswagen tools, technology and Volkswagen original parts, and all parts and labour are guaranteed for two years. What’s more, the Volkswagen Service Plan will remain with the vehicle should you decide to sell your car.

## Volkswagen Service Plan – retail sales only

For vehicles under 1 year old set to the Fixed Service regime that has not had its first service, comprising first two manufacturer’s scheduled services:

- ‘Oil service’ including oil filter change
- ‘Oil service’ including oil filter change and ‘Inspection service’ plus a pollen filter replacement (if required)

Excludes electric vehicles. Service plan covers first two consecutive services, limited to 1x ‘Oil service’ and 1x ‘Oil and Inspection service’. T&Cs apply: All vehicles must be set to the Fixed Service regime by the retailer. Maximum age of car is 12 months (Service plan must be taken out before first service is due). Additional work, including wear and tear is excluded. Servicing must be carried out in line with the requirement of the Service Schedule. All work must be carried out by an Authorised Volkswagen Repairer. Offers may be varied or withdrawn at any time. Plan validity is dependent on required payments received. Administered by Volkswagen Financial Services. Retail sales only. For pricing and further details, please consult your authorised Volkswagen retailer or visit [www.volkswagen.co.uk](#)





# The Passat and Passat Estate

Issued by Volkswagen Marketing, Volkswagen (UK)  
© Volkswagen Group United Kingdom Limited 2021  
Issue: 1 July 2021

Volkswagen Information Service  
Telephone: 0800 333 666  
Internet: [www.volkswagen.co.uk](http://www.volkswagen.co.uk)

Volkswagen Fleet Business Centre  
Telephone: 0800 0093 397  
Internet: [www.volkswagen.co.uk/offers-and-finance/fleet](http://www.volkswagen.co.uk/offers-and-finance/fleet)

This brochure can be viewed or downloaded in pdf format at:  
[www.volkswagen.co.uk](http://www.volkswagen.co.uk)

*Prices, specifications, features, technical and other information (including fuel consumption, CO<sub>2</sub> emissions and range) are updated regularly and are subject to change without notice (this may include changes between order and delivery). There may be a delay in updates to our materials – always consult your authorised Volkswagen retailer for the latest information.*



[facebook.com/VolkswagenUK](https://facebook.com/VolkswagenUK)



[@UKVolkswagen](https://twitter.com/UKVolkswagen)



[youtube.com/user/ukvolkswagen](https://youtube.com/user/ukvolkswagen)



[volkswagen\\_uk](https://volkswagen_uk)