



# The Touareg

## Price and specification guide

Effective from 1.4.2021



# Built to break new ground: the Touareg.

The Touareg breathes fresh air into the premium SUV class with impressive proportions, pioneering technology and the widest range of assistance, handling and comfort systems ever integrated within a Volkswagen. LED lights to the front and rear, underlined by striking 19 to 22 inch alloys depending on your chosen model, create an athletic look. Add to that an impressive specification, quality craftsmanship and technologically advanced infotainment systems that offer incredible levels of functionality and customisation – not to mention the ground-breaking optional 'Off-road' pack and you can see why the Touareg is raising the bar once again.



Model shown is Touareg SEL with optional 21" 'Suzuka' Dark Graphite diamond-turned alloy wheels, panoramic sunroof, air suspension, 'IQ. Light' LED matrix headlights with headlight washers and metallic paint. Front cover model shown is new Touareg R with optional 22" 'Estoril' Gloss Black alloy wheels and metallic signature paint.

# Designed to turn heads, from every angle.

There's no mistaking the Touareg's clean contours, dynamic proportions and assertive confidence. Incisive bodylines and a longer bonnet by chrome trapezoid tailpipes left and right set in the sporty elegant diffuser on SEL models and above. Wider and longer than its predecessor, the Touareg offers significantly more luggage capacity and interior space, yet despite its new dimensions, has a lighter body thanks to its construction of aluminium and high-tech steels. Perfect aesthetics combine with an athletic body to create an SUV with real road presence.



Model shown is Touareg SEL with optional 21" 'Suzuka' Dark Graphite diamond-turned alloy wheels, air suspension, 'IQ. Light' LED matrix headlights with headlight washers, rear tinted glass and ultra metallic paint.

# Technologically advanced comfort for a more relaxed drive.

The exterior may be sporty and dynamic, but inside all is calm and relaxed, thanks to a combination of spacious design, exacting craftsmanship and technologically advanced comfort. Take for example the 14-way ergoComfort front seats, which are standard on the R-Line Tech and Black Edition, with electric adjustment for the seat height, seat length, seat cushion angle, backrest angle and 4-way electrically adjustable lumbar support – seen here in luxurious optional ‘Savona’ leather upholstery. Standard on R and optional on all other models, Active front climate seats offer a choice of three separate ventilation settings, or Active front climate seats with massage function which offers the addition of eight individual pneumatic massage settings for the driver and front seat passenger. The ‘Matt Black’ centre console features ‘Silver’ decorative inlay, while the leather trimmed multifunction steering wheel and gear knob are finished with ‘Gloss Black’ inlay and aluminium trim, giving the cabin a sporty elegance.



# Model prices.

5-DOOR 4X4 RANGE.		RDE2 Compliant	Fuel	Transmission	Output, PS	CO <sub>2</sub> emission, g/km <sup>1</sup> WLTP test cycle	Basic Recommended Retail £	VAT £	Total Recommended Retail £	Additional 'On the road' Costs £ <sup>2</sup>	Manufacturer's Recommended 'On the road' Retail £ <sup>2</sup>	P11D Value £ <sup>3</sup>	BIK % <sup>4</sup>	ABI Insurance Group <sup>5</sup>
SE ‡	3.0 ltr V6 TDI SCR 4MOTION ‡	Yes	Diesel	8-spd auto tiptronic	231	214	37,287.50	7,457.50	<b>44,745.00</b>	<b>2,035.00</b>	<b>46,780.00</b>	<b>45,380.00</b>	<b>37</b>	<b>37E</b>
	3.0 ltr V6 TDI SCR 4MOTION ‡	Yes	Diesel	8-spd auto tiptronic	286	213	39,487.50	7,897.50	<b>47,385.00</b>	<b>2,035.00</b>	<b>49,420.00</b>	<b>48,020.00</b>	<b>37</b>	<b>40E</b>
SEL ‡	3.0 ltr V6 TSI 4MOTION ‡	Yes	Petrol	8-spd auto tiptronic	340	249	43,912.50	8,782.50	<b>52,695.00</b>	<b>2,600.00</b>	<b>55,295.00</b>	<b>53,330.00</b>	<b>37</b>	<b>41E</b>
	3.0 ltr V6 TDI SCR 4MOTION ‡	Yes	Diesel	8-spd auto tiptronic	231	214	40,812.50	8,162.50	<b>48,975.00</b>	<b>2,035.00</b>	<b>51,010.00</b>	<b>49,610.00</b>	<b>37</b>	<b>37E</b>
	3.0 ltr V6 TDI SCR 4MOTION ‡	Yes	Diesel	8-spd auto tiptronic	286	214	43,012.50	8,602.50	<b>51,615.00</b>	<b>2,035.00</b>	<b>53,650.00</b>	<b>52,250.00</b>	<b>37</b>	<b>40E</b>

<sup>1</sup> Figures for the Volkswagen Touareg range, including petrol, diesel and hybrid vehicles. Plug-in hybrid vehicles require mains electricity for charging. Figures for hybrid vehicles were obtained using a combination of battery power and fuel. Figures shown are for comparability purposes; only compare fuel consumption, CO<sub>2</sub> and electric range figures with other vehicles tested to the same technical procedures. These figures may not reflect real life driving results, which will depend upon a number of factors including the accessories fitted (post-registration), variations in weather, driving styles and vehicle load. Data correct at 11.3.2021. Figures quoted are for a range of configurations (including non-UK) and are subject to change due to ongoing approvals/changes. For more information, please see [www.volkswagen.co.uk/need-help/wltp](http://www.volkswagen.co.uk/need-help/wltp) or consult your authorised Volkswagen retailer. <sup>2</sup> The recommended 'On the road' prices and any VED charges quoted reflect the VED charges which apply to vehicles registered after 1 April 2021. The price and charges you pay may differ from any prices or charges displayed or quoted before 1 April 2021. For full details of 'First year rate' VED (Vehicle Excise Duty), delivery to retailer, number plates and vehicle first registration fee included in the recommended 'On the road' retail price, [please click here](#). <sup>3</sup> P11D value = Total recommended retail price + delivery to retailer £509.17, + number plates £20, + VAT £105.83 (calculated by reference to total of delivery to retailer + number plates). P11D value is based on standard specification model with no factory-fitted options or other accessories. <sup>4</sup> The BIK charges quoted reflect the charges which apply to vehicles registered after 6 April 2021. These charges may differ from any charges displayed or quoted before 6 April 2021. The BIK % figure quoted includes the 4% diesel supplement, where applicable. Please consult your Volkswagen retailer for full details. <sup>5</sup> The ABI insurance group is the recommended insurance rating set by the Association of British Insurers. Please note that insurance group ratings are purely advisory. They are used by insurers (ABI members and Lloyd's syndicates) as one of the factors in calculating premiums. Insurers are not required to follow the advisory group ratings and they may depart from them if they so wish. ‡ These vehicles are WLTP (Worldwide Harmonised Light-Duty Vehicles Test Procedure) type approved vehicles. More information is available at [www.volkswagen.co.uk/need-help/wltp](http://www.volkswagen.co.uk/need-help/wltp). SCR (Selective Catalytic Reduction) requires AdBlue®, [please click here](#) or visit [www.volkswagen.co.uk/technology/adblue](http://www.volkswagen.co.uk/technology/adblue) for more details. RDE2 refers to Real Driving Emissions Step 2.

## Volkswagen Service Plan – Retail sales only.

For vehicles under 1 year old set to the Fixed Service regime that has not had its first service, comprising first two manufacturer's scheduled services:

- 'Oil service' including oil filter change
- 'Oil service' including oil filter change and 'Inspection service' plus a pollen filter replacement (if required)

Excludes electric vehicles. Service plan covers first two consecutive services, limited to 1x 'Oil service' and 1x 'Oil and Inspection service'. T&Cs apply: All vehicles must be set to the Fixed Service regime by the retailer. Maximum age of car is 12 months (Service plan must be taken out before first service is due). Additional work, including wear and tear is excluded. Servicing must be carried out in line with the requirement of the Service Schedule. All work must be carried out by an Authorised Volkswagen Repairer. Offers may be varied or withdrawn at any time. Plan validity is dependent on required payments received. Administered by Volkswagen Financial Services. Retail sales only. For pricing and further details, please consult your authorised Volkswagen retailer or visit [www.volkswagen.co.uk](http://www.volkswagen.co.uk)

*Prices, specifications, features, technical and other information (including fuel consumption, CO<sub>2</sub> emissions and range) are updated regularly and are subject to change without notice (this may include changes between order and delivery). There may be a delay in updates to our materials – always consult your authorised Volkswagen retailer for the latest information.*

*Volkswagen UK may change RRP's at any time (this includes where there are government changes in regulation and/or legislation).*

*There may be a delay to any RRP displaying correctly on our materials. Always obtain prices from your chosen authorised Volkswagen retailer.*

VAT IS CALCULATED AT 20%. EFFECTIVE FROM 1 APRIL 2021.

# Model prices.

5-DOOR 4X4 RANGE.		RDE2 Compliant	Fuel	Transmission	Output, PS	CO <sub>2</sub> emission, g/km <sup>1</sup> WLTP test cycle	Basic Recommended Retail £	VAT £	Total Recommended Retail £	Additional 'On the road' Costs £ <sup>2</sup>	Manufacturer's Recommended 'On the road' Retail £ <sup>2</sup>	P11D Value £ <sup>3</sup>	BIK % <sup>4</sup>	ABI Insurance Group <sup>5</sup>
R-LINE †	3.0 ltr V6 TSI 4MOTION †	Yes	Petrol	8-spd auto tiptronic	340	251	46,904.17	9,380.83	56,285.00	2,600.00	58,885.00	56,920.00	37	41E
	3.0 ltr V6 TDI SCR 4MOTION †	Yes	Diesel	8-spd auto tiptronic	231	216	43,812.50	8,762.50	52,575.00	2,035.00	54,610.00	53,210.00	37	38E
	3.0 ltr V6 TDI SCR 4MOTION †	Yes	Diesel	8-spd auto tiptronic	286	216	46,004.17	9,200.83	55,205.00	2,035.00	57,240.00	55,840.00	37	41E
R-LINE TECH †	3.0 ltr V6 TSI 4MOTION †	Yes	Petrol	8-spd auto tiptronic	340	252	49,537.50	9,907.50	59,445.00	2,600.00	62,045.00	60,080.00	37	41E
	3.0 ltr V6 TDI SCR 4MOTION †	Yes	Diesel	8-spd auto tiptronic	231	217	46,445.83	9,289.17	55,735.00	2,035.00	57,770.00	56,370.00	37	39E
	3.0 ltr V6 TDI SCR 44MOTION †	Yes	Diesel	8-spd auto tiptronic	286	217	48,637.50	9,727.50	58,365.00	2,035.00	60,400.00	59,000.00	37	41E
BLACK EDITION †	3.0 ltr V6 TSI 4MOTION †	Yes	Petrol	8-spd auto tiptronic	340	254	51,654.17	10,330.83	61,985.00	2,600.00	64,585.00	62,620.00	37	44E
	3.0 ltr V6 TDI SCR 4MOTION †	Yes	Diesel	8-spd auto tiptronic	231	219	48,562.50	9,712.50	58,275.00	2,035.00	60,310.00	58,910.00	37	41E
	3.0 ltr V6 TDI SCR 4MOTION †	Yes	Diesel	8-spd auto tiptronic	286	219	50,754.17	10,150.83	60,905.00	2,035.00	62,940.00	61,540.00	37	43E
R †	3.0 ltr V6 TSI eHybrid 4MOTION †	Yes	Petrol/Electric PHEV	8-spd auto tiptronic	462	67	59,408.33	11,881.67	71,290.00	705.00	71,995.00	71,925.00	17	48E

1 Figures for the Volkswagen Touareg range, including petrol, diesel and hybrid vehicles. Plug-in hybrid vehicles require mains electricity for charging. Figures for hybrid vehicles were obtained using a combination of battery power and fuel. Figures shown are for comparability purposes; only compare fuel consumption, CO<sub>2</sub> and electric range figures with other vehicles tested to the same technical procedures. These figures may not reflect real life driving results, which will depend upon a number of factors including the accessories fitted (post-registration), variations in weather, driving styles and vehicle load. Data correct at 11.3.2021. Figures quoted are for a range of configurations (including non-UK) and are subject to change due to ongoing approvals/changes. For more information, please see [www.volkswagen.co.uk/need-help/wltp](http://www.volkswagen.co.uk/need-help/wltp) or consult your authorised Volkswagen retailer. 2 The recommended 'On the road' prices and any VED charges quoted reflect the VED charges which apply to vehicles registered after 1 April 2021. The price and charges you pay may differ from any prices or charges displayed or quoted before 1 April 2021. For full details of 'First year rate' VED (Vehicle Excise Duty), delivery to retailer, number plates and vehicle first registration fee included in the recommended 'On the road' retail price, [please click here](#) 3 P11D value = Total recommended retail price + delivery to retailer £509.17, + number plates £20, + VAT £105.83 (calculated by reference to total of delivery to retailer + number plates). P11D value is based on standard specification model with no factory-fitted options or other accessories. 4 The BIK charges quoted reflect the charges which apply to vehicles registered after 6 April 2021. These charges may differ from any charges displayed or quoted before 6 April 2021. The BIK % figure quoted includes the 4% diesel supplement, where applicable. Please consult your Volkswagen retailer for full details. 5 The ABI insurance group is the recommended insurance rating set by the Association of British Insurers. Please note that insurance group ratings are purely advisory. They are used by insurers (ABI members and Lloyd's syndicates) as one of the factors in calculating premiums. Insurers are not required to follow the advisory group ratings and they may depart from them if they so wish. † These vehicles are WLTP (Worldwide Harmonised Light-Duty Vehicles Test Procedure) type approved vehicles. More information is available at [www.volkswagen.co.uk/need-help/wltp](http://www.volkswagen.co.uk/need-help/wltp). SCR (Selective Catalytic Reduction) requires AdBlue®, [please click here](#) or visit [www.volkswagen.co.uk/technology/adblue](http://www.volkswagen.co.uk/technology/adblue) for more details. RDE2 refers to Real Driving Emissions Step 2.

Prices, specifications, features, technical and other information (including fuel consumption, CO<sub>2</sub> emissions and range) are updated regularly and are subject to change without notice (this may include changes between order and delivery). There may be a delay in updates to our materials – always consult your authorised Volkswagen retailer for the latest information.

Volkswagen UK may change RRP's at any time (this includes where there are government changes in regulation and/or legislation).

There may be a delay to any RRP displaying correctly on our materials. Always obtain prices from your chosen authorised Volkswagen retailer.

VAT IS CALCULATED AT 20%. EFFECTIVE FROM 1 APRIL 2021.

# Standard items of equipment: SE.



**VOLKSWAGEN SERVICE**  
 3-year/60,000 miles warranty (whichever is soonest)  
 3-year paintwork warranty  
 12-year body protection warranty  
 Volkswagen Roadside Assistance  
 Exclusions and terms apply, [please click here](#) for more detail

**4MOTION – 4 WHEEL DRIVE MODELS**  
 4MOTION permanent four wheel drive with limited slip Torsen differential and electronic differential lock on all four wheels  
 4MOTION Active Control. Four driving modes: On road, Off-road, Off-road Individual and Snow

**WHEELS AND SUSPENSION**  
 Alloy wheels, four 8J x 19" 'Osorno' with 255/55 R19 tyres and anti-theft wheel bolts  
 Tyre mobility kit, 12V compressor and tyre sealant

**EXTERIOR**  
 Black side window surrounds  
 Body-coloured door handles  
 Body-coloured door mirrors with integrated indicators  
 Body-coloured front and rear bumpers with black lower section  
 Door sill protectors, plastic  
 Dynamic headlight range adjustment  
 Galvanised body  
 'Gloss Black' B-pillar  
 Black side window surrounds  
 Body-coloured door handles  
 Body-coloured door mirrors with integrated indicators  
 Body-coloured front and rear bumpers with black lower section  
 LED rear tail lights  
 Door sill protectors, plastic  
 Dynamic headlight range adjustment  
 Galvanised body  
 'Gloss Black' B-pillar  
 Heat insulating glass, in side and rear windows  
 LED rear fog lights  
 LED rear number plate lights  
 Full LED headlights, including LED static cornering lights, adaptive low beam for urban and motorway use, LED daytime running lights and indicators using optical LED light guide technology  
 Load sill protector, plastic  
 Poor weather light  
 Roof rails, black anodised finish

**INTERIOR**  
 Air vents in B-pillar  
 'Cortina Silver' matt decorative inlays in dash and doors  
 Carpet mats, front and rear  
 Coat hook on B-pillar x 2  
 Cup holders, front x 2 in centre console, illuminated  
 Driver's and front passenger's double sun visor with LED illuminated vanity mirrors  
 Front centre armrest, with storage compartment and LED lights  
 Glovebox, cooled and illuminated  
 Height and reach adjustable steering column  
 Leather trimmed gear knob with gloss black inlay and aluminium trim  
 LED luggage compartment lights x 2, left and right  
 LED white interior lighting: front and rear footwell lighting and touch-activated lighting in the front and rear rooflining  
 Load lashing points x 4 in luggage compartment  
 Load-through provision  
 Luggage compartment cover with retractable convenience opening  
 'Matt Black' centre console with 'Silver' decorative inlay  
 Multifunction steering wheel with 'Gloss Black' inserts and aluminium trim, paddle shift with touch control, leather trimmed with controls for vehicle set up and infotainment system  
 One-touch indicators with repeat function  
 Remote rear seat release

**INTERIOR (CONTINUED)**  
**Seating**  
 – Front seats with manual 6-way adjustment  
 – Heated front seats with 3 preset temperature settings  
 – Modular rear seat system, with sliding and reclining function 40:20:40, split folding  
 – Upholstery – 'Graphite' cloth  
 Shopping bag hooks in luggage compartment x 2  
 Storage compartment in dashboard centre with cover and USB-C connectivity  
 Storage compartment in driver's door for 1.5 litre bottle  
 Storage compartments in passengers' doors for 1.0 litre bottle  
 12V sockets x 3 – located in centre console, rear centre console and luggage compartment  
**EFFICIENCY**  
 Battery regeneration (recuperation – energy recovery during braking)  
 Start/Stop function



The specifications listed are for information purposes only as our products are continually updated and changes may be made to the specifications at any time. If you require any specific feature, please consult your authorised Volkswagen retailer who is regularly updated with any change in specification. Specifications are subject to change without notice.

# Standard items of equipment: SE (continued).

## IN-CAR ENTERTAINMENT AND COMMUNICATIONS

- Discover Navigation Pro infotainment system
- 9.2" colour touch-screen
- Bluetooth telephone and audio connection for compatible devices<sup>1</sup>
- Branded points of interest
- Car information display
- DAB digital radio receiver
- Dynamic navigation based on TMC+, three route options (Fast, Short, Eco)
- Dynamic traffic sign recognition<sup>2</sup>
- 'Gesture Control'
- MDI (Multi Device Interface), via USB-C connection - compatible products only
- Music playback from MP3, WMA and AAC files
- Preloaded European navigation data
- SD card reader
- Simultaneous pairing of 2 compatible mobile devices
- SMS functionality - read, compose and send SMS messages using touch-screen display (when stationary, compatible Android smartphones only)
- Title and cover art display
- 'Think Blue. Trainer.' Driver tips and journey analysis
- Voice activated control system for telephone and navigation functions
- Volkswagen Media Control<sup>3</sup> - allows remote control of the infotainment system via smartphone or tablet
- 3D map view
- 2D/3D map view
- 8 speakers front/rear 4 x 20 watt output
- Premium USB-C cable (choice of either Apple or Android smartphone compatibility)

## CAR-NET

- Car-Net 'Guide and Inform Premium'<sup>4</sup>
  - Providing online access to a range of useful information such as traffic, fuel pricing, weather, news feeds, internet and hybrid radio, online route calculation and satellite and 3D city maps - 3-year subscription
- Car-Net 'Security and Service'<sup>5</sup>
  - Provides continuous interaction between the driver, vehicle and Volkswagen, via integrated SIM-card connectivity
  - Driver and vehicle integration with Volkswagen call centre or server for: 'eCall'
  - Emergency call service for SOS calls to emergency response incl. Automatic accident notification, Car breakdown, Vehicle health report and Service schedule
  - Driver and vehicle integration via Car-Net Portal or Car-Net app for: Driving data, Doors and lights, Area alert, speed alert, Horn and hazard lights, Parking position and Online anti-theft alarm - 3-year subscription
  - Lock & Unlock - use the app to display the lock status and change this after entering the S-PIN. For reasons of security, a one-time identity check using the Volkswagen Ident procedure is a prerequisite
- Car-Net 'App-Connect'<sup>6</sup>
  - Combines the functionality of Apple 'CarPlay', Google 'Android Auto' and 'MirrorLink'<sup>TM</sup> allowing 'mirroring' of smartphone display on the infotainment touch-screen via USB-C connection

## SAFETY AND SECURITY

- Active bonnet - sensor controlled pedestrian protection system to raise bonnet away from engine compartment in the event of an impact
- ABSPlus (Anti-lock Braking System) with EBD (Electronic Brake-pressure Distribution) and HBA (Hydraulic Brake Assist)
- Airbags
  - Curtain airbag system for front and rear seats with side impact airbags for front seats
  - Driver's and front passenger's airbags with passenger's airbag deactivation switch
- Alarm with interior protection, back-up horn and towing protection
- Automatic Post-Collision Braking System
- Central locking with remote control
- Child security locks for front and rear doors, activated from driver's and front passenger's door
- Driver Alert system, audible and visual
- Driver's and front passenger's safety-optimised head restraints - 2-way adjustable
- Electronic engine immobiliser
- ESC (Electronic Stability Control) including EDL (Electronic Differential Lock), ASR (Traction Control) and trailer stabilisation function
- First aid box and warning triangle
- Front three-point seat belts with height adjustment and seat belt tensioners
- Isofix child seat preparation, outer rear seats (also fitting i-Size child seats), including 2 top tethers on the outer rear seats and 1 top tether in the centre seat
- Three rear head restraints
- Three rear three-point seat belts
- Two-tone horn
- Tyre pressure loss indicator
- Warning buzzer and light for front seat belts if unfastened, initiated when driver's door is opened with ignition on or off

## COMFORT AND CONVENIENCE

- Ambient lighting, white in front footwell, door sill protectors, light strips below trim in front and rear doors and dashboard
- Automatic coming/manual leaving home lighting function
- Automatic dimming interior rear-view mirror
- Climate control - 2Zone electronic air conditioning with automatic air recirculation
- Electric windows, front and rear
- Electrically heated, adjustable and foldable door mirrors, auto dimming and puddle lighting with reverse activated kerb-view adjustment on passenger's door mirror
- Heated windscreen washer jets
- Keyless start
- Rain sensor

## DRIVER'S ASSISTANCE

- Adaptive Cruise Control (ACC), including Front Assist, radar sensor controlled distance monitoring system, City emergency braking system, cruise control and speed limiter
- Dusk sensor
- Traffic Sign Recognition, camera controlled system with visual warning for traffic and road signs
- Electronic parking brake - with auto hold function
- Hill descent assist
- Hill start assist
- Lane Assist, camera controlled warning system should the vehicle drift out of its lane
- Multifunction camera
- Multifunction computer with 7" colour screen in instrument cluster
- Parking sensors, ultrasonic front and rear, optical and audible
- Power-assisted steering, speed-sensitive
- Remote unlocking for tailgate on driver's side



Interior shown is Touareg SE with optional coloured ambient lighting pack.

- 1 Phones must be Bluetooth HFP (Hands Free Profile) compatible, please contact your authorised Volkswagen retailer for specific phone compatibility.
- 2 Dynamic traffic sign recognition reflects national speed limits as well as temporary speed limit restrictions.
- 3 Only operable in conjunction with compatible tablets and smartphones including iPhone 5 and above. Please see [www.volkswagen.co.uk](http://www.volkswagen.co.uk) to check compatibility.
- 4 Car-Net 'Guide and Inform Premium' services are accessed via a compatible mobile device. Please see [www.volkswagen.co.uk](http://www.volkswagen.co.uk) for more information. The use of 'Guide and Inform Premium' services entails exchanging large volumes of data. As such, we strongly recommend that you sign-up for a flat rate data plan with your mobile network provider. After the initial 3-year Car-Net contract, an annual subscription is chargeable for the continuation of 'Guide and Inform Premium' services.
- 5 Use of Car-Net 'Security & Service' is governed in a separate Contract concluded online with Volkswagen. To use the free Car-Net app you will need a smartphone with iOS or Android operating system and a SIM-card with a data option. Depending on your mobile tariff, sending and receiving data online may incur additional charges (e.g. roaming charges), particularly if you are using Car-Net abroad. For more information on Car-Net 'Security & Service', go to [www.volkswagen.co.uk/technology/car-net/security-and-service](http://www.volkswagen.co.uk/technology/car-net/security-and-service) or contact your Volkswagen retailer.
- 6 Only operable in conjunction with compatible smartphones including iPhone 5 and above. Display and operation of certified apps including audio and voice control (if supported by the app). Usage of certified apps only while driving. Please see [www.volkswagen.co.uk](http://www.volkswagen.co.uk) to check smartphone compatibility.

The specifications listed are for information purposes only as our products are continually updated and changes may be made to the specifications at any time. If you require any specific feature, please consult your authorised Volkswagen retailer who is regularly updated with any change in specification. Specifications are subject to change without notice.



# The Touareg SEL. Unmistakable style.

There's no mistaking the Touareg SEL's clean contours, dynamic proportions and assertive confidence. Incisive bodylines and a long bonnet create a strong silhouette, dominated by the front grille that blends harmoniously into the full LED headlights including LED static cornering lights, with chrome strips extending out from the central Volkswagen roundel over the headlights. 19 inch 'Osorno' alloy wheels, stainless steel load sill and door sill protectors and black anodised roof rails complete the exterior look. The rear design is powerful, with sculpted shoulders with broad rear LED tail light clusters and black grained rear diffuser with chrome trapezoid exhaust tailpipes, left and right underlining its progressive look. Perfect aesthetics combine with an athletic body to create an SUV with real personality.



Model shown is Touareg SEL with optional 21" 'Suzuka' Dark Graphite diamond-turned alloy wheels, air suspension, 'IQ. Light' LED matrix headlights with headlight washers and ultra metallic paint.

## Additional items of standard equipment: SEL (over SE).

### EXTERIOR

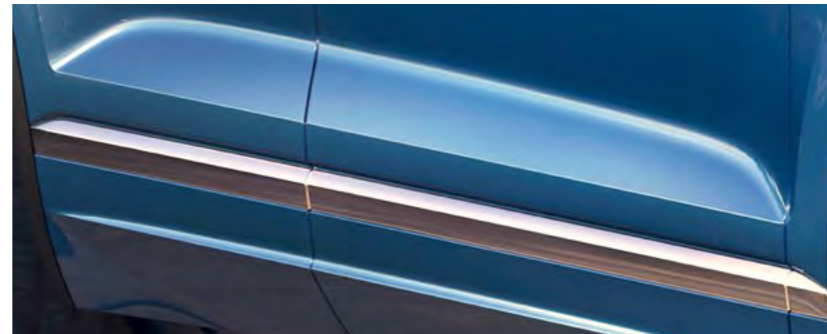
- Body-coloured front and rear bumpers with black wheel arch protection and bumper mouldings
- Chrome side window surrounds
- Chrome trimmed lower edge of door, extending onto sills (not R-Line)
- Chrome trimmed upper and lower radiator grille louvres, extending into headlights
- Door sill protectors, stainless steel
- Load sill protector, stainless steel
- Rear diffuser, black grained with chrome trapezoid exhaust tailpipes, left and right

### INTERIOR

- Rear centre armrest, folding with cup holders x 2
- Seating
  - Upholstery – ‘Vienna Black’ leather<sup>1</sup>. Leather upholstery consists of upper surface of seat base and backrest, and top part of front and rear armrests. Interior door panel trim in leatherette
  - Front seats with manual 6-way adjustment
  - Lumbar support for front seats, 2-way manual



Model shown is Touareg SEL with optional 21" 'Suzuka' Dark Graphite diamond-turned alloy wheels, air suspension, 'IQ. Light' LED matrix headlights with headlight washers, rear tinted glass and ultra metallic paint.



<sup>1</sup> Some parts of leather interior will contain artificial leather.

The specifications listed are for information purposes only as our products are continually updated and changes may be made to the specifications at any time. If you require any specific feature, please consult your authorised Volkswagen retailer who is regularly updated with any change in specification. Specifications are subject to change without notice.

# Exclusive R-Line design and styling. Inside and out.

By design, the Touareg R-Line and R-Line Tech could not be better equipped, both inside and out, to handle whatever lies ahead. Numerous exterior features emphasise its dynamic character, from the distinctive 20 inch 'Braga' Dark Graphite diamond-turned alloy wheels on R-Line and 20 inch 'Nevada' Black diamond-turned alloy wheels on R-Line Tech models, 'C' signature 'Gloss Black' front air intake and 'R-Line' exterior styling pack with specially designed front and rear bumpers, side skirts, body-coloured wheel arch protection and 'R-Line' badging on the front panels and front grille. The exterior styling is completed with 80% rear tinted heat insulating glass from B-pillar backwards, silver anodised roof rails and the sporty 'Gloss Black' rear diffuser. The 'R-Line' styling ensures a dynamic exterior that delivers the highest levels of style and individuality.



Model shown is Touareg R-Line with optional 'IQ. Light' LED matrix headlights with headlight washers and premium signature paint.



01

01 The stunning 20 inch 'Nevada' Black diamond-turned alloy wheels add a unique finishing touch to the Touareg R-Line Tech. Image shown features optional headlight washers and premium signature paint.



02

02 Creating an impressive welcome and hinting at the 'R-Line' interior styling to come are the door sills in stainless steel with 'R-Line' logo for driver and front passenger doors. Image shown features optional premium signature paint.

# R-Line styling. Strong, powerful and self-assured.

As soon as you sit inside the Touareg R-Line, you'll appreciate the attention to detail and quality materials and finishes. Exclusive 'R-Line' styling includes a leather trimmed multifunction heated sports steering wheel with 'R-Line' logo, stainless steel pedals and uniquely designed 'Silver Wave' aluminium decorative inlays. Front ergoComfort seats with 14-way adjustment in 'Vienna' leather<sup>1</sup>, which are standard on R-Line Tech models, feature the distinctive 'R-Line' logo on the seat backrests and decorative stitching, while 'Soul' black rooflining and 'R-Line' stainless steel front door sill protectors provide the finishing touches. Interior features include four USB-C connectors, a storage compartment in the front centre console for wireless smartphone charging<sup>2</sup>, climate control – 4Zone electronic air conditioning and automatic electric opening rear tailgate. Standard on R-Line Tech models and above is the Innovision Cockpit, a glass digital instrument and infotainment display comprising the Digital Cockpit and Discover Premium touch-screen infotainment system that creates a seamless, uncluttered and visually stunning dashboard that offers new levels of functionality and customisation.



Interior shown is Touareg R-Line with optional 'Savona' R-Line leather front ergoComfort seats with 14-way adjustment, memory pack, Active front climate seats, air suspension and panoramic sunroof.

<sup>1</sup> Some parts of leather interior will contain artificial leather.  
<sup>2</sup> Only operable in conjunction with compatible inductive charge enabled services smartphones. Please see [www.qi-wirelesscharging.net](http://www.qi-wirelesscharging.net) to check smartphone compatibility.

## Additional items of standard equipment: R-Line (over SEL).



**WHEELS AND SUSPENSION**  
Alloy wheels, four 9J x 20" 'Braga' Dark Graphite diamond-turned with 285/45 R20 tyres and anti-theft wheel bolts  
Sports suspension

**EXTERIOR**  
Body-coloured wheel arch protection  
'C' signature 'Gloss Black' front air intake  
Rear diffuser, 'Gloss Black'  
Rear tinted glass from B-pillar backwards, approx. 80% tinted  
'R-Line' body styling kit – unique front and rear bumpers, side skirts and side sills  
Roof rails, silver anodised  
Unique 'R-Line' badging

**INTERIOR**  
'Gloss Black' decorative inserts in dash, centre console and doors  
Luggage compartment cover, electrically-operated  
Multifunction heated 'R-Line' sports steering wheel, paddle shift with touch control, leather trimmed with controls for vehicle set up and infotainment system  
'Silver Wave' design aluminium decorative inlays  
'Soul' black rooflining  
Stainless steel pedals  
Unique 'R-Line' stainless steel door sill protectors, front

**DRIVER'S ASSISTANCE**  
Park Assist, sensor controlled steering aid to assist parallel or bay parking, optical and audible  
Rear-view camera

**IN-CAR ENTERTAINMENT AND COMMUNICATIONS**  
4 x USB-C connection, USB charging socket (compatible products only) in front centre storage compartment, front seat centre armrest and rear centre console x2  
Storage compartment in front centre console for wireless smartphone charging<sup>1</sup>

**COMFORT AND CONVENIENCE**  
Automatic electric opening rear tailgate, press and hold closing of rear tailgate with power latching  
Climate control – 4Zone electronic air conditioning with automatic air recirculation. Independent temperature control, air intensity and settings for driver, front passenger and rear seat passengers operated via infotainment system. Independent control on rear of front centre armrest for rear seat passengers



## Additional items of standard equipment: R-Line Tech (over R-Line).



**WHEELS AND SUSPENSION**  
Alloy wheels, four 9J x 20" 'Nevada' Black diamond-turned with 285/45 R20 tyres and anti-theft wheel bolts

**INNOVISION COCKPIT**  
One-screen digital instrument and infotainment display comprising: Digital Cockpit, 12.3" customisable digital instrument display and Discover Premium, 15" touch-screen infotainment system

**INTERIOR**  
Seating  
– Upholstery – 'Vienna' leather<sup>2</sup>  
– Front ergoComfort seats with electric 14-way adjustment for seat height, seat length, seat cushion angle, backrest angle and 4-way electrically adjustable lumbar support. Front seats with seat position memory settings for driver's seat and door mirror, including comfort entry/exit function<sup>3</sup> – seats move backwards then return to original position for easy vehicle entry/exit  
– Front seats with 'R-Line' logo on seat backrest



**COMFORT AND CONVENIENCE**  
Keyless entry and keyless start  
Memory function for driver's seat and driver's door mirror

**IN-CAR ENTERTAINMENT AND COMMUNICATIONS**  
Discover Premium infotainment system  
– 15" TFT colour touch-screen  
– Connected Navigation – extended 3D city model display  
– Nav-Gen4-Routing – alternative online route calculation taking into account route, location and traffic conditions  
– Self-learning navigation – route anticipation and recognition for alternative route if required  
– Hybrid radio – terrestrial and Internet radio combine for the best possible reception regardless of location  
– Mobile online services – eSIM ensures continuous online functions even without smartphone, including news, weather and Gracenote online

**DRIVER'S ASSISTANCE**  
High Beam Assist  
Volkswagen digital display, 12.3" high resolution TFT dash display screen with customisable menus and information

**SAFETY AND SECURITY**  
Driver's and front passenger's safety-optimised head restraints – 4-way adjustable

1 Only operable in conjunction with compatible inductive charge enabled services smartphones. Please see qiwireless.com to check smartphone compatibility.  
2 Some parts of leather interior will contain artificial leather.  
3 The driver's seat moves backwards if the driving position is stored in the memory function after seat has been adjusted.

The specifications listed are for information purposes only as our products are continually updated and changes may be made to the specifications at any time. If you require any specific feature, please consult your authorised Volkswagen retailer who is regularly updated with any change in specification. Specifications are subject to change without notice.

## Standard items of equipment: Black Edition (over R-Line Tech).

### WHEELS AND SUSPENSION

Alloy wheels, four 9½J x 21" 'Suzuka' Gloss Black diamond-turned with 285/45 R21 tyres and anti-theft wheel bolts

Air suspension, lowered by approx 25mm. Including Driving Profile selection for: improved aerodynamics, off-road/rough terrain driving performance, automatic self-levelling suspension, height adjustment and electronic shock absorption control. Includes Normal, Comfort, Off-road and Special Off-road driving modes

Driving Profile selection

### EXTERIOR

Black door mirrors and side window surrounds

Black lower edge of door, extending onto sills

Black upper and lower grille louvres, extending into headlights and radiator grille

Darkened LED rear light clusters with dynamic sequential indicators

'IQ. Light' LED matrix headlights with headlight washers

'R-Line' body styling kit – unique front and rear bumpers, side skirts and side sills

Roof rails, black anodised

### COMFORT AND CONVENIENCE

Keyless entry/keyless start and full electric tailgate operation

Panoramic sunroof with electrically operated sunblind

### DRIVER'S ASSISTANCE

Area view



Model shown is Touareg Black Edition with optional Silicon Grey metallic paint.

[Configure now >](#)



# The new Touareg R.

Unprecedented performance, unparalleled design, unbelievable fun; the new Touareg R offers you the ultimate driving experience. No corner too exciting, no trip too daunting and no task too intimidating. Combining the sustainability of a hybrid vehicle with the versatility of a SUV. Are you ready for the challenge?

Model shown is new Touareg R with optional metallic signature paint.

Image shown is a left-hand drive European model and may not necessarily reflect UK specification – always consult your authorised Volkswagen retailer for full details.

# Additional items of standard equipment: R (over Black Edition)



Interior shown is new Touareg R with optional metallic signature paint. Image shown is a left-hand drive European model and may not necessarily reflect UK specification – always consult your authorised Volkswagen retailer for full details.

### WHEELS AND SUSPENSION

Alloy wheels, four 9½J x 22" 'Estoril' Black diamond-turned with 285/35 R22 tyres and anti-theft wheel bolts

### INTERIOR

Carpet mats, front and rear with blue contrast stitching and 'R' logo

Multifunction heated 'R' sports steering wheel, paddle shift with touch control, leather trimmed with controls for vehicle set up and infotainment system

- Seating
- Upholstery – 'Puglia' perforated leather<sup>1</sup>
  - Active front climate seats – front seats with climate control function for centre section, backrest and side bolsters with three ventilation settings
  - Front seats with 'R' logo on seat backrest

### EXTERIOR

- Illuminated door sills, front with 'R' logo
- 'R' body styling kit – unique front and rear bumpers, side skirts and side sills
- Rear diffuser in 'Black' with twin chrome exhaust tailpipes, left and right
- Unique 'R' badging
- 18" performance brake system, including perforated discs, front

### COMFORT AND CONVENIENCE

Ambient lighting in front footwell, light strips below trim in front and rear doors and dashboard. Choice of 30 colour options

Fuel tank, 76 litres

### DRIVER'S ASSISTANCE

Digital Cockpit Pro, 12.3" high resolution TFT dash display screen with customisable menus and information, with 'R' specific welcome

Exterior sports e-sound

### ELECTRIC

Electric range 28 miles

Socket AC type 2

Two 6 metre charging cables – 32amp AC cable for wallbox/chargepoints (mode 3) and 10amp mains charge cable (mode 2)



<sup>1</sup> Some parts of leather interior will contain artificial leather.

The specifications listed are for information purposes only as our products are continually updated and changes may be made to the specifications at any time. If you require any specific feature, please consult your authorised Volkswagen retailer who is regularly updated with any change in specification. Specifications are subject to change without notice. Images shown feature optional metallic signature paint.



# Driver's assistance systems.

Volkswagen is constantly developing innovative technology to help keep you safe and enhance your driving experience. Providing more assistance systems than ever before, the Touareg is well equipped to handle unexpected traffic situations confidently and capably, and now even in the dark, thanks to the Night vision system.



**01** The innovative **Night vision system**<sup>1</sup> uses infrared beams to scan an area up to 130 metres ahead, detecting thermal radiation and projecting an image onto your Digital Cockpit or optional Head-up Display. If the situation is critical, the system will warn you and precondition the brake assistance systems, helping to keep you safe when driving at night. This is especially effective if your visibility is impaired by fog or rain, enabling you to see a person or animal ahead. Optional on all models.

**02** **Travel Assist** is a camera and radar sensor controlled warning system that helps you keep your distance in congested traffic and avoid a typical congestion type collision. Should your vehicle drift out of its lane, the system accelerates, brakes and steers as appropriate, as long as it detects the driver's hands on the wheel. Travel Assist is part of the Driver's Assistance Pack Plus, which is optional on all models.



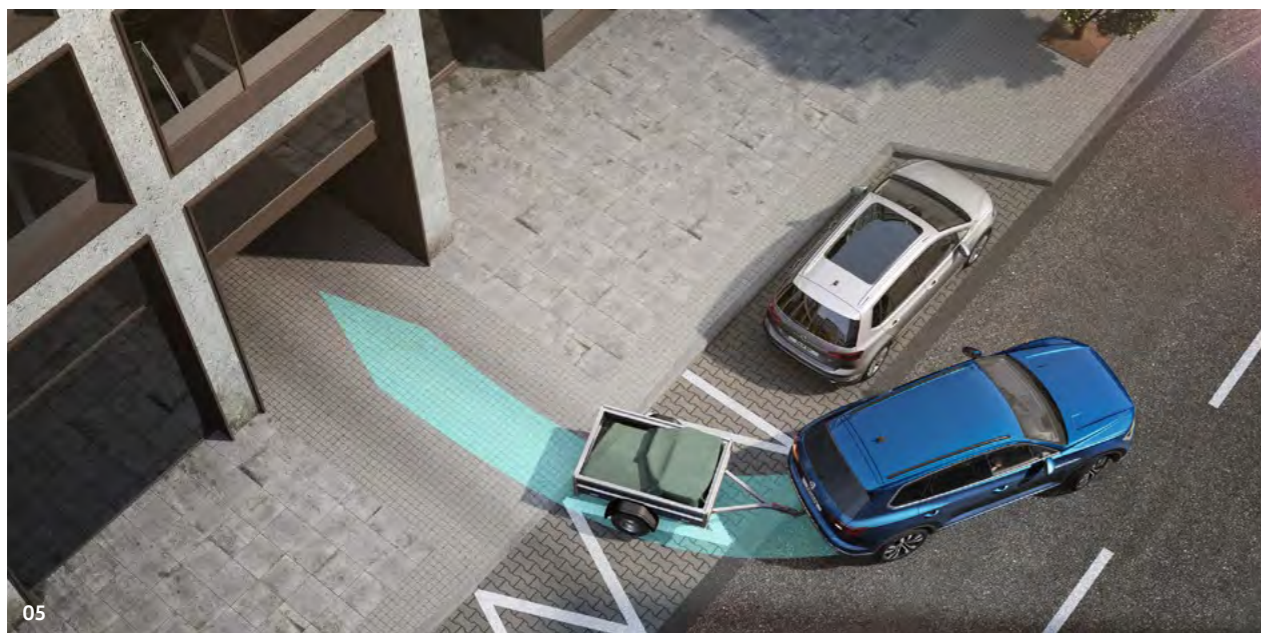
**03** **Front Cross Traffic Assist** uses radar technology to detect vehicles or pedestrians approaching from the side, providing invaluable assistance in the case of blind exits and junctions, where you have to 'nose out' slowly to see what's coming. Sensors monitor the area in front of your car, issuing optical and acoustic warnings of any cross traffic detected at speeds of up to 18mph. If a car outside your field of vision approaches and your Touareg moves forward at a speed of up to 6mph, the system will implement an emergency stop to avoid a collision. Front Cross Traffic Assist is part of the Driver's Assistance Pack Plus, which is optional on all models.



**04** **Predictive Pedestrian Protection** is a camera and radar sensor controlled warning system to detect pedestrians in or on the edge of the road. Predictive Pedestrian Protection is part of the Driver's Assistance Pack Plus, which is optional on all models.

**05** **Emergency Assist** can help save lives in critical instances by recognising the incapacity of the driver. As soon as the system cannot detect any steering, braking or acceleration activity, it alerts the driver. If the driver remains inactive, it keeps the vehicle in its lane and initiates an emergency stop, whilst automatically activating the hazard warning lights. Adaptive Cruise Control (ACC) prevents the vehicle from colliding with the traffic ahead. Emergency Assist is part of the Driver's Assistance Pack Plus, which is optional on all models.

<sup>1</sup> Must be ordered in conjunction with optional headlight washers on SE, SEL, SEL Tech, R-Line and R-Line Tech. Images shown are for illustration purposes only and may not necessarily reflect UK specification.



**01 Area view** provides a 360-degree display of your Touareg in the infotainment display, transmitting information via four cameras to the front, the sides and the rear, enabling you to view areas that are difficult to see from the driver's seat – very useful when there is limited space to manoeuvre. Also included with Area view is **Park Assist** which helps you parallel and bay park using ultrasonic and audible parking sensors. All the driver has to do is operate the pedals whilst keeping a good look-out and Park Assist will do the rest. Standard on Black Edition and R, and optional on R-Line Tech models.

**02 Adaptive Cruise Control (ACC)** automatically adjusts your speed to that of the vehicle in front, ensuring you keep a specified distance. It will warn if you're approaching too fast and, in an emergency situation, generate enough braking force to reduce the severity of or prevent a collision. Includes Front Assist radar sensor controlled distance monitoring system, City emergency braking system, cruise control and speed limiter. Standard on all models.

**03 Park Assist and rear-view camera<sup>1</sup>** not only makes parallel parking easier, but also helps you reverse park into a space at 90 degrees to the kerb. Using ultrasonic sensors, Park Assist will detect a parking space large enough for either bay or parallel parking. Once the vehicle is in reverse, all the driver has to do is operate the accelerator and brake, and keep a lookout, while the Touareg steers itself into its chosen space. The rear-view camera displays the area behind your vehicle on the screen of the vehicle's infotainment system, helping you to manoeuvre into tight spaces quickly and easily. Auxiliary lines help you navigate safely into parking spaces, and thanks to the high resolution display, even small obstacles such as kerbs are visible. Standard on R-Line and R-Line Tech, and optional on SE and SEL models.

**04 The Lane Assist** function helps to prevent accidents by using a camera controlled warning system to monitor the vehicle's position in relation to road markings. At 40mph or above, should Lane Assist detect your vehicle drift out of its lane, the system will take corrective action. If the maximum corrective action is not enough to keep your vehicle in its lane, or the speed drops below 40mph, the system vibrates the steering wheel to alert the driver to correct the vehicle, helping to make driving safer and more comfortable especially on motorways. Standard on all models.

**05 Towbar, power folding with Trailer Assist** helps you reverse more easily and accurately with a trailer or caravan hitched. The optical display visualises actual and possible steering angles in the instrument cluster. Reverse steering is automatic, with direction controlled via the mirror adjustment switch which acts as a joystick, while the driver controls the pedals and keeps a good look out. When not in use, the towbar can be handily retracted into the vehicle floor out of sight. Optional on all models.

**06 The Proactive occupant protection system** uses the sensors from the Electronic Stability Control (ESC) and the Front Assist traffic monitoring system to detect critical situations with elevated accident potential. If there is the possibility of a collision, it reacts by activating the hazard warning lights and at the same time all windows and sunroof are closed to just a small gap for optimal side airbag deployment. Simultaneously, the seat belt tensioners tighten the front seat belts and electrically adjustable front seats, if fitted, are aligned to enable the seat belts, head restraints and airbags to provide maximum protection. Optional on all models as part of the Driver's Assistance Pack Plus.

<sup>1</sup> Not available in conjunction with Area view and Park Assist. Images shown are for illustration purposes only and may not necessarily reflect UK specification.

# Visionary, innovative, creative.

## The futuristic Innovision Cockpit.

A pioneering first for Volkswagen, the Touareg R-Line Tech, Black Edition and R are the only SUVs in their class to be equipped with the Discover Premium, 15 inch touch-screen infotainment system. Merging seamlessly into the 12.3 inch Digital Cockpit, it removes almost all protruding buttons, knobs and dials, enabling you to control the functions and systems of your car simply and easily by touch, gesture or voice. You can customise the home screen with your favourite apps and photos just like a smartphone and manage all operating systems from the central interface, making travel safer, more convenient and more intuitive than ever before. Equipped with the connectivity of a new era, the Touareg provides the blueprint for tomorrow's digital interior – today. The Innovision Cockpit is a glass digital instrument and infotainment display comprising the Digital Cockpit and Discover Premium touch-screen infotainment system that creates a seamless, uncluttered and visually stunning dashboard. Standard on R-Line Tech, Black Edition and R and optional on all other models.



# Multimedia.

Welcome to the driver's seat of the future. The Touareg is the most technically advanced Volkswagen of its era, equipped with pioneering multimedia technology. The Innovision Cockpit and ground-breaking Discover Premium infotainment system make their debut in this technologically advanced interior, providing the very latest in digital communication, with a permanently installed eSIM card ensuring up-to-the-minute connectivity for all your multimedia needs.



Interior shown is Touareg SEL Tech with optional coloured ambient lighting pack, 'Vienna' leather front ergoComfort seats with 14-way adjustment, memory pack, 'Dynaudio Confidence' premium soundpack, keyless entry/keyless start and metallic paint.



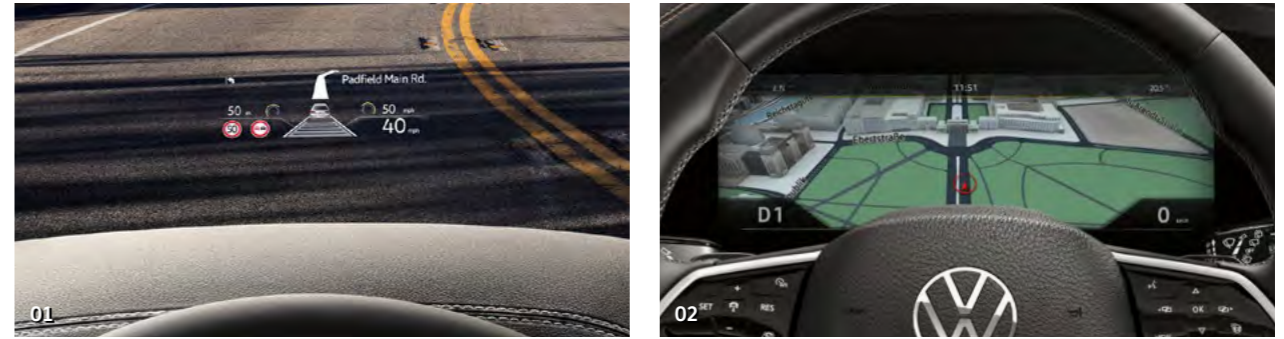
**01-02** You can **customise your home screen** with your favourite apps and photos, use Car-Net to see your compatible smartphone apps and even let passengers select the infotainment while you drive. The versatile and customisable Discover Premium infotainment system allows you to control and view multiple functions on the same 15 inch touch-screen display. Add your favourite apps and photos, display your smartphone apps or make use of Car-Net services while following route guidance from the navigation function. Your passengers are even capable of controlling certain functions from their smartphone or tablet should they wish. Your individual settings can be saved in 'personal profiles' and recalled at any time. The Innovision Cockpit is standard on R-Line Tech, Black Edition and R and optional on all other models.

**01 The Head-up Display<sup>1</sup>** is projected directly onto the front windscreen in the driver's primary field of vision at the press of a button. Driving information, including current speed, navigation details and traffic data, is projected onto the windscreen and clearly displayed, helping to reduce the amount of time that the driver's eyes are averted from the road. Optional on all models.

**02 The Innovision Cockpit** features a screen comparable to that of a laptop, with an interface you can customise just like your smartphone. It sits next to your **12.3 inch digital display** and is angled towards the driver, providing an ergonomically optimised display that puts everything you need within easy reach. Fully customisable, you can arrange information as you wish, zoom into the navigation maps or select 3D display, giving a clearer overview of the vehicle settings, assistance and comfort systems. The digital display forms part of the Innovision Cockpit which is standard on R-Line Tech, Black Edition and R and optional on all other models.

**03 The Discover Navigation Pro touch-screen infotainment system** features a glass-covered 9.2 inch colour touch-screen for navigation and radio functions. It responds to spoken voice commands for navigation and telephone functions, and also features gesture control for use with various different menus, responding to swiping gestures and confirming a successful swipe with a sound effect which can be deactivated if required. The system offers Volkswagen Media Control<sup>2</sup>, allowing remote control of the infotainment system via a smartphone or tablet, preloaded European navigation data, 3D map view, three calculated routes (Fast, Short and Eco), dynamic navigation based on TMC+, branded points of interest, Dynamic traffic sign recognition<sup>3</sup>, photo display from JPEG and PNG files and SD card reader. It comes with Car-Net 'App-Connect'<sup>4</sup>, 3-years' Car Net 'Guide and Inform Premium'<sup>5</sup>, providing online access to such information as traffic, fuel pricing, weather and news feeds; and includes online navigation software updates, enabling you to download the latest map data, and Car-Net 'Security & Service'<sup>6</sup>. Standard on SE, SEL and R-Line models.

**04 The Discover Premium infotainment system** enters a new dimension to in-car entertainment with the 12.3 inch digital instrument display and impressive 15 inch glass-covered touch-screen display merging to form the Innovision Cockpit, a unique digital operating, information, communication and entertainment unit, providing intuitive control via touch, gesture or voice, along with maximum personalisation. Building on the already impressive Discover Navigation Pro, it also features many new additions such as the 'Business' phone interface, Connected Navigation featuring extended 3D city model display, Nav-Gen4-Routing, self-learning navigation, hybrid radio – terrestrial and internet radio, and improved mobile online services, ensuring continuous online functions even without your smartphone present. Standard on R-Line Tech, Black Edition and R and optional on all other models as part of the Innovision Cockpit.



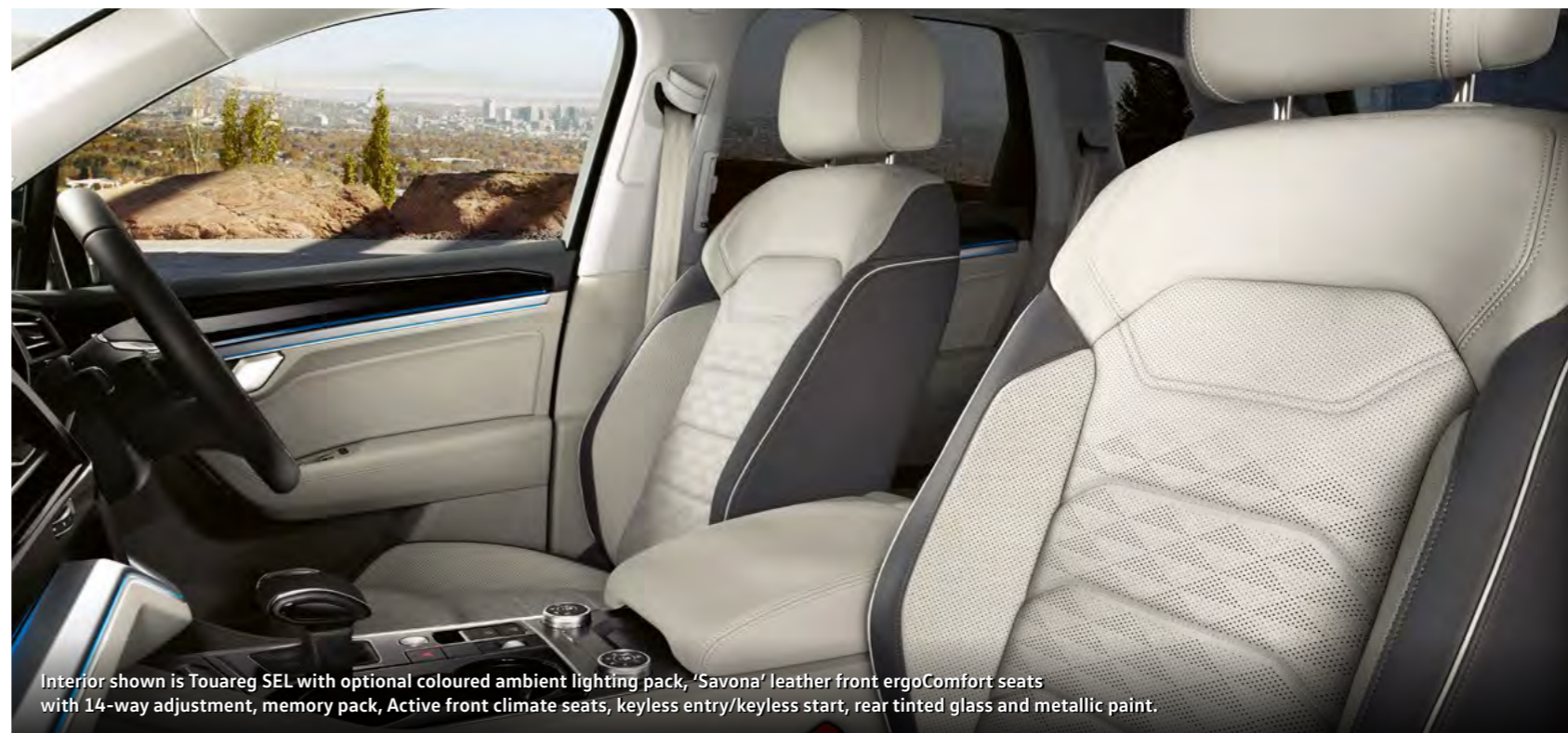
1 Please note, use of polarised lenses may impair the visibility of the Head-up Display.  
 2 Only operable in conjunction with compatible tablets and smartphones including iPhone 5 and above. Please see [www.volkswagen.co.uk](http://www.volkswagen.co.uk) to check compatibility.  
 3 Dynamic traffic sign recognition reflects national speed limits as well as temporary speed limit restrictions.  
 4 Only operable in conjunction with compatible smartphones including iPhone 5 and above. Display and operation of certified apps including audio and voice control (if supported by the app). Usage of certified apps only while driving. Please see [www.volkswagen.co.uk](http://www.volkswagen.co.uk) to check smartphone compatibility.  
 5 Car-Net 'Guide and Inform Premium' services are accessed via a compatible mobile device. Please see [www.volkswagen.co.uk](http://www.volkswagen.co.uk) for more information. The use of 'Guide and Inform Premium' services entails exchanging large volumes of data. As such, we strongly recommend that you sign-up for a flat rate data plan with your mobile network provider. After the initial 3-year Car-Net contract, an annual subscription is chargeable for the continuation of 'Guide and Inform Premium' services.  
 6 Use of Car-Net 'Security & Service' is governed in a separate Contract concluded online with Volkswagen. To use the free Car-Net app you will need a smartphone with iOS or Android operating system and a SIM-card with a data option. Depending on your mobile tariff, sending and receiving data online may incur additional charges (e.g. roaming charges), particularly if you are using Car-Net abroad. For more information on Car-Net 'Security & Service', go to [www.volkswagen.co.uk/technology/car-net/security-and-service](http://www.volkswagen.co.uk/technology/car-net/security-and-service) or contact your Volkswagen retailer.

# Comfort and convenience.

With a prime elevated driving position, a cockpit ergonomically designed around the driver and an impressive range of driver assistance systems, practical innovations and advanced technology at your fingertips, you can expect exemplary levels of comfort and convenience inside the Touareg. And of course, everything within clear sight and exactly where you need it to be.



01



Interior shown is Touareg SEL with optional coloured ambient lighting pack, 'Savona' leather front ergoComfort seats with 14-way adjustment, memory pack, Active front climate seats, keyless entry/keyless start, rear tinted glass and metallic paint.



02

**01 Front ergoComfort seats** ensure the optimum seating position for both driver and front passenger, with electric 14-way adjustment for seat height, seat length, seat cushion angle, backrest angle and 4-way electrically adjustable lumbar support. Further support and comfort is provided by 4-way adjustable safety-optimised front head restraints. Also included is a memory function for the driver's seat and driver's door mirror with reverse activated kerb-view adjustment on the passenger's door mirror. Memory settings for three individual profiles can be stored, then selected as required. Standard on R-Line Tech, Black Edition and R and optional on SE, SEL and R-Line models.

**Active front climate seats** are also available as an option, which offer climate control function for centre section, backrest and side bolsters, complete with three individual ventilation settings. Standard on R and optional on all other models.

For the ultimate in luxury and comfort, you can also specify **Active front climate seats with massage function**. The front seats offer the choice of eight independently pneumatically controlled settings via air cushions, that will help to relax and sooth you on any journey. Optional on all models.

**02 Climate control – 4Zone electronic air conditioning with automatic air recirculation** gives independent control of the temperature and air intensity to the driver, front passenger and rear seat passengers. The system is operated intuitively via the infotainment system, with additional independent controls for rear seat passengers, located on the rear of the front centre armrest. Standard on R-Line and above and optional on all other models.

[Configure now >](#)



01

**01-02** The Touareg's generous proportions give you the flexibility to carry many combinations of both passengers and luggage with plenty of room for seating as well as stowage. The **generous boot space**, along with the modular **sliding and reclining rear seats** that split and fold in a 40:20:40 ratio, allow huge flexibility, combining comfort with functionality, whatever your activities.

**03** The effortless **power latching function** automatically closes all the Touareg's doors completely shut when ajar. The automated closing function is particularly useful if you're in a tight parking space with limited room to the side, and ensures no force or slamming is required to completely shut the doors. Optional on all models.

**04** **Keyless entry/keyless start and full electric tailgate operation** allows you to open and start your Touareg without taking the key out of your pocket. The automatic electric opening rear tailgate can also be closed by pressing and holding the button which features a time delay and convenient power latching function. For further convenience, providing you have the key on you, it simply takes a flick of your foot to activate the sensors under the rear of the vehicle and open the electric tailgate. Standard on Black Edition and R and optional on all other models.



02



04



03

# Suspension and running gear.

The Touareg is designed to provide exceptional ride comfort and, when fitted with the optional 'Off-road' pack, is at home on nearly every type of terrain. A choice of driving modes includes Sand and Gravel, giving you exceptional mobility even on unstable surfaces, while features such as the front underbody protection and larger fuel tank give you the capability to tackle even the toughest conditions wherever your travels may take you.



**01 Air suspension<sup>1</sup>** ensures you enjoy ultimate driving comfort on every trip, adapting the height of the car to the terrain, with a choice of Normal, Comfort, Off-road and Special Off-road driving profiles. Your Touareg can also be raised to give you 70mm more ground clearance or lowered to make loading and unloading easier. Optional on all models. With the optional 'Off-road' pack, additional off-road driving modes include Off-road Auto, Sand, Gravel and Off-road expert. Standard on Black Edition and R and optional on all other models.

**02-03** Thanks to **rear axle steering**, cornering on country lanes and parking on city streets is a whole lot easier in the Touareg. The rear wheels steer along with the front wheels, not only giving you a smaller turning circle, but also increasing driving stability, so you can drive more dynamically with increased agility.

**Active eAWS anti-roll bars** reacts more quickly and at lower speeds than conventional stabilisers, reducing side roll and understeering. This ensures greater stability and comfort, enabling you to drive with precision and agility to enjoy sporty cornering, even on tough terrain. Forms part of the 'Professional' Chassis pack<sup>1</sup> which is optional on all models.

<sup>1</sup> Air suspension, Air suspension with rear axle steering and 'Professional' Chassis pack cannot be ordered in conjunction with each other.

Images shown are for illustration purposes only and may not necessarily reflect UK specification.



# Factory-fitted options.

## WHEELS AND SUSPENSION

	SE	SEL	R-Line	R-Line Tech	Black Edition	R	Basic RRP £ Excluding VAT	Total RRP £ Including VAT						
<b>19" 'Tirano' Black diamond-turned</b>	Four 8½J x 19" 'Tirano' Black diamond-turned with 255/55 R19 tyres and anti-theft wheel bolts						O	O	-	-	-	-	216.67	260.00
<b>20" 'Montero' Silver</b>	Four 9J x 20" 'Montero' Silver with 285/45 R20 tyres and anti-theft wheel bolts						O	O	-	-	-	-	858.33	1,030.00
<b>20" 'Braga' Dark Graphite diamond-turned</b>	Four 9J x 20" 'Braga' Dark Graphite diamond-turned with 285/45 R20 tyres and anti-theft wheel bolts						-	-	●	O	-	-	No cost option	
<b>21" 'Suzuka' Dark Graphite diamond-turned<sup>1</sup></b>	Four 9½J x 21" 'Suzuka' Dark Graphite diamond-turned with 285/40 R21 tyres and anti-theft wheel bolts						-	O	-	-	-	-	1,587.50	1,905.00
	Four 9½J x 21" 'Suzuka' Dark Graphite diamond-turned with 285/40 R21 tyres and anti-theft wheel bolts						-	-	O	O	-	-	645.83	775.00
	Four 9½J x 21" 'Suzuka' Dark Graphite diamond-turned with 285/40 R21 tyres and anti-theft wheel bolts						-	-	-	-	O	-	No cost option	
<b>22" 'Estoril' Gloss Black</b>	Four 9½J x 22" Estoril' Gloss Black with 285/35 R22 tyres and anti-theft wheel bolts						-	-	-	-	-	O	212.50	255.00
<b>Steel space saver spare wheel</b>	Steel space saver spare wheel, including tool kit and jack. <i>In lieu of tyre mobility kit, 12V compressor and tyre sealant</i>						O	O	O	O	O	-	54.17	65.00
<b>Air suspension<sup>2</sup></b>	Air suspension system lowered by approximately 25mm. Including Driving Profile selection for: improved aerodynamics, off-road/rough terrain driving performance, automatic self-levelling suspension, height adjustment and electronic shock absorption control. Includes Normal, Comfort, Off-road and Special Off-road driving modes						O	O	O	O	●	●	1,445.83	1,735.00
<b>Air suspension with rear axle steering<sup>2</sup></b>	Air suspension system lowered by approximately 25mm. Including Driving Profile selection for: improved aerodynamics, off-road/rough terrain driving performance, automatic self-levelling suspension, height adjustment and electronic shock absorption control. Includes Normal, Comfort, Off-road and Special Off-road driving modes						O	O	O	O	-	-	2,029.17	2,435.00
	Rear axle steering. Below 22mph rear wheels turn in the opposite direction to front for improved manoeuvring. Above 22mph rear wheels turn in the same direction to front for improved stability						-	-	-	-	O	-	583.33	700.00
<b>'Professional' Chassis pack<sup>2</sup></b>	'Professional' Chassis pack with eAWS electromechanical anti-roll bars for front and rear axles. Depending on driving situation and terrain, either side of the anti-roll bar can be stiffened or decoupled by an electronically controlled 48V actuator motor that joins them						O	O	O	O	-	-	4,195.83	5,035.00
	Active eAWS anti-roll bars significantly reduce vehicle roll when cornering, while improving directional stability on roads that are uneven on one side. Driving off-road, electromechanical decoupling of the anti-roll bars enables improved articulation of the axles which improves traction						-	-	-	-	O	-	2,750.00	3,300.00
	Air suspension system lowered by approximately 25mm. Including Driving Profile selection for: improved aerodynamics, off-road/rough terrain driving performance, automatic self-levelling suspension, height adjustment and electronic shock absorption control. Includes Normal, Comfort, Off-road and Special Off-road driving modes						O	O	O	O	-	-	4,195.83	5,035.00
Rear axle steering. Below 22mph rear wheels turn in the opposite direction to front for improved manoeuvring. Above 22mph rear wheels turn in the same direction to front for improved stability						-	-	-	-	O	-	2,750.00	3,300.00	

1 Must be ordered in conjunction with Air suspension, Air suspension with rear axle steering or 'Professional' Chassis pack.  
2 Air suspension, Air suspension with rear axle steering and 'Professional' Chassis pack cannot be ordered in conjunction with each other.

Choosing larger alloy wheels than standard, as an option, may result in increased fuel consumption as well as higher CO<sub>2</sub> emissions and subsequently increased Vehicle Excise Duty (VED) band, and BIK rates paid by company car drivers may increase. This is due to the fact that larger wheels have both more aerodynamic drag and more mechanical drag, resulting in increased rolling resistance and increased wind resistance. As a result, the VED band that the vehicle falls into may increase from its original VED band when fitted with standard size wheels. In some instances, the recommended 'On the road' retail price paid for the vehicle may increase as a result of the increased VED rate. Please refer to [CO<sub>2</sub> emissions, BIK % and VED Bands with optional wheels section](#).

● Standard equipment ○ Optional equipment - Not available. Factory-fitted options are subject to availability and extended delivery.

Volkswagen UK may change RRP's at any time (this includes where there are government changes in regulation and/or legislation).  
There may be a delay to any RRP displaying correctly on our materials. Always obtain prices from your chosen authorised Volkswagen retailer.

VAT IS CALCULATED AT 20%. EFFECTIVE FROM 1 APRIL 2021.

# Factory-fitted options.

## PAINT

		SE	SEL	R-Line	R-Line Tech	Black Edition	R	Basic RRP £ Excluding VAT	Total RRP £ Including VAT
<b>Non-Metallic</b>	Pure White	○	○	○	○	○	○	No cost option	
<b>Metallic and Pearl Effect</b>	Silicon Grey, Tamarind Brown, Antimonial Silver, Deep Black, Moonlight Blue, Sechura Beige	○	○	-	-	-	○	750.00	900.00
	Silicon Grey, Tamarind Brown, Antimonial Silver, Deep Black, Moonlight Blue	-	-	○	○	○	-	750.00	900.00
<b>Ultra Metallic</b>	Malbec Red, Aquamarine Blue	○	○	○	○	○	-	1,029.17	1,235.00
<b>Metallic Signature</b>	Lapiz Blue	-	-	-	-	-	○	1,029.17	1,235.00
<b>Premium Signature</b>	Oryx White	○	○	○	○	○	○	1,537.50	1,845.00

Please refer to [Paint and Combinations section](#), or visit [www.volkswagen.co.uk](http://www.volkswagen.co.uk) for full availability of paint colours.

## EXTERIOR

<b>Headlight washers<sup>1</sup></b>		○	○	○	○	-	-	158.33	190.00
<b>'IQ. Light' LED matrix headlights with headlight washers<sup>2</sup></b>	All LED interactive matrix dipped and main beam headlights, daytime running lights, headlight washers, indicators and cornering lights including Dynamic Light Assist. Information from the front camera, navigation's digital map data, GPS information, steering wheel angle and current driving speed activates specific LEDs individually for optimal lighting. Includes specific lighting functions for: city lighting, motorway lighting, motorway dipped beam, poor weather light, sign glare reduction, off-road light and marker light (in conjunction with optional Night Vision)	○	○	○	-	-	-	1,487.50	1,785.00
		-	-	-	○	●	●	1,379.17	1,655.00
<b>Laminated safety privacy glass</b>	Front, side and rear windows. Rear tinted glass from B-pillar backwards, approx. 90% tinted. <i>Not in conjunction with rear tinted glass</i>	○	○	-	-	-	-	687.50	825.00
		-	-	○	○	○	○	441.67	530.00
<b>'Off-road' pack</b>	Off-road pack – Including front underbody guard, increased fuel tank to 90 litres and includes additional off-road driving modes: Off-road Auto, Sand, Gravel and Off-road expert modes	○	○	○	○	○	-	466.67	560.00
<b>Rear tinted glass</b>	Heat insulating rear tinted glass from B-pillar backwards, approx. 80% tinted	○	○	●	●	●	●	250.00	300.00
<b>Roof rails, silver anodised</b>		○	○	●	●	-	-	79.17	95.00
<b>Towbar – power folding with Trailer Assist</b>	Towbar, retractable into vehicle floor. Trailer Assist – controls reverse guidance of trailer. Optical display visualises actual and possible steering angles in the instrument cluster with reverse steering direction controlled via joystick (mirror adjustment switch)	○	○	○	○	○	○	958.33	1,150.00

1 Not available in conjunction with 'IQ. Light' LED matrix headlights with headlight washers. 2 Not available in conjunction with High Beam Assist.

● Standard equipment ○ Optional equipment - Not available. Factory-fitted options are subject to availability and extended delivery.

Volkswagen UK may change RRP's at any time (this includes where there are government changes in regulation and/or legislation). There may be a delay to any RRP displaying correctly on our materials. Always obtain prices from your chosen authorised Volkswagen retailer.

VAT IS CALCULATED AT 20%. EFFECTIVE FROM 1 APRIL 2021.

# Factory-fitted options.

## INTERIOR

		SE	SEL	R-Line	R-Line Tech	Black Edition	R	Basic RRP £ Excluding VAT	Total RRP £ Including VAT
<b>Cargo management system</b>	Cargo management system for rear luggage compartment, including movable bar and restraining belt	<input type="radio"/>	<input type="radio"/>	<input type="radio"/>	<input type="radio"/>	<input type="radio"/>	<input type="radio"/>	216.67	260.00
<b>Net partition and luggage compartment mat</b>	Net partition for rear luggage compartment and reversible mat for boot space <sup>1</sup>	<input type="radio"/>	<input type="radio"/>	<input type="radio"/>	<input type="radio"/>	<input type="radio"/>	<input type="radio"/>	216.67	260.00
	Net partition for rear luggage compartment and reversible mat for boot space with mechanical release of the rear seats	<input type="radio"/>	<input type="radio"/>	<input type="radio"/>	<input type="radio"/>	<input type="radio"/>	<input type="radio"/>	291.67	350.00
<b>Reversible boot floor mat with cargo management system</b>	Reversible boot floor mat with luggage management system including movable bar and restraining belt	<input type="radio"/>	<input type="radio"/>	<input type="radio"/>	<input type="radio"/>	<input type="radio"/>	<input type="radio"/>	291.67	350.00
<b>'Soul' black rooflining</b>		<input type="radio"/>	<input type="radio"/>	<input checked="" type="radio"/>	<input checked="" type="radio"/>	<input checked="" type="radio"/>	<input checked="" type="radio"/>	241.67	290.00
<b>Sports steering wheel – heated multifunction leather trimmed</b>	Heated three-spoke multifunction sports steering wheel including leather trimmed gear knob. Including paddle shift with touch control	<input type="radio"/>	<input type="radio"/>	<input checked="" type="radio"/>	<input checked="" type="radio"/>	<input checked="" type="radio"/>	<input checked="" type="radio"/>	200.00	240.00
<b>'Vienna' leather</b>	'Vienna' leather upholstery with heated front seats and lumbar support, 2-way manual	<input type="radio"/>	<input checked="" type="radio"/>	<input checked="" type="radio"/>	<input type="radio"/>	<input type="radio"/>	<input type="radio"/>	1,766.67	2,120.00
<b>'Vienna' leather front ergoComfort seats with 14-way adjustment<sup>3</sup></b>	'Vienna' leather upholstery front ergoComfort seats with electric 14-way adjustment for seat height, seat length, seat cushion angle, backrest angle and 4-way electrically adjustable lumbar support. Including comfort entry/exit function <sup>4</sup> – seats move backwards then return to original position for easy vehicle entry/exit. Front 4-way adjustable safety-optimised head restraints	<input type="radio"/>	<input type="radio"/>	<input type="radio"/>	<input type="radio"/>	<input type="radio"/>	<input type="radio"/>	1,000.00	1,200.00
		<input type="radio"/>	<input type="radio"/>	<input type="radio"/>	<input type="radio"/>	<input type="radio"/>	<input type="radio"/>	2,766.67	3,320.00
<b>'Savona' leather front ergoComfort seats with 14-way adjustment<sup>3</sup></b>	'Savona' leather upholstery front ergoComfort seats with electric 14-way adjustment for seat height, seat length, seat cushion angle, backrest angle and 4-way electrically adjustable lumbar support. Including comfort entry/exit function <sup>4</sup> – seats move backwards then return to original position for easy vehicle entry/exit. Front 4-way adjustable safety-optimised head restraints	<input type="radio"/>	<input type="radio"/>	<input type="radio"/>	<input type="radio"/>	<input type="radio"/>	<input type="radio"/>	1,533.33	1,840.00
<b>'Savona' R-Line leather front ergoComfort seats with 14-way adjustment<sup>3</sup></b>	'Savona' R-Line leather upholstery front ergoComfort seats with electric 14-way adjustment for seat height, seat length, seat cushion angle, backrest angle and 4-way electrically adjustable lumbar support. Including comfort entry/exit function <sup>4</sup> – seats move backwards then return to original position for easy vehicle entry/exit. Front 4-way adjustable safety-optimised head restraints	<input type="radio"/>	<input type="radio"/>	<input type="radio"/>	<input type="radio"/>	<input type="radio"/>	<input type="radio"/>	1,804.17	2,165.00
		<input type="radio"/>	<input type="radio"/>	<input type="radio"/>	<input type="radio"/>	<input type="radio"/>	<input type="radio"/>	704.17	845.00
<b>Active front climate seats<sup>1</sup></b>	Front seats with climate control function for centre section, backrest and side bolsters with three ventilation settings for front seats. <i>Not available in Mistral/Grigio 'Vienna' leather</i>	<input type="radio"/>	<input type="radio"/>	<input type="radio"/>	<input type="radio"/>	<input type="radio"/>	<input checked="" type="radio"/>	558.33	670.00
<b>Active front climate seats with massage function<sup>1</sup></b>	Front seats with climate control function for centre section, backrest and side bolsters with three ventilation settings for front seats. Eight individual pneumatic massage settings via individual air cushions, offering variable control of intensity. <i>Not available in Mistral/Grigio 'Vienna' leather</i>	<input type="radio"/>	<input type="radio"/>	<input type="radio"/>	<input type="radio"/>	<input type="radio"/>	<input type="radio"/>	900.00	1,080.00
		<input type="radio"/>	<input type="radio"/>	<input type="radio"/>	<input type="radio"/>	<input type="radio"/>	<input type="radio"/>	345.83	415.00
<b>Memory pack<sup>1,6</sup></b>	Memory function for driver's seat and driver's door mirror, including reverse activated kerb-view adjustment on passenger's door mirror. Memory settings for 3 individual profiles	<input type="radio"/>	<input type="radio"/>	<input type="radio"/>	<input checked="" type="radio"/>	<input checked="" type="radio"/>	<input checked="" type="radio"/>	95.83	115.00
<b>Memory pack plus<sup>1,6</sup></b>	Memory function for driver's and passenger's front seats, steering column and door mirrors, including reverse activated kerb-view adjustment on passenger's door mirror. Memory settings for 3 individual profiles	<input type="radio"/>	<input type="radio"/>	<input type="radio"/>	<input type="radio"/>	<input type="radio"/>	<input type="radio"/>	475.00	570.00
		<input type="radio"/>	<input type="radio"/>	<input type="radio"/>	<input type="radio"/>	<input type="radio"/>	<input type="radio"/>	379.17	455.00

1 Must be ordered in conjunction with 'Vienna' or 'Savona' leather ergoComfort seats. 2 Not available in conjunction with ambient lighting pack – coloured, front climate seats, memory pack or memory pack plus. 3 Must be ordered in conjunction with memory pack or memory pack plus. 4 The driver's seat moves backwards if the driving position is stored in the memory function after seat has been adjusted. 5 Front 4-way adjustable safety-optimised head restraints are standard on R-Line Tech and Black Edition models. 6 Not available in conjunction with net partition and luggage compartment mat with mechanical release of the rear seats.

● Standard equipment ○ Optional equipment – Not available. Factory-fitted options are subject to availability and extended delivery.

Volkswagen UK may change RRP's at any time (this includes where there are government changes in regulation and/or legislation). There may be a delay to any RRP displaying correctly on our materials. Always obtain prices from your chosen authorised Volkswagen retailer.

VAT IS CALCULATED AT 20%. EFFECTIVE FROM 1 APRIL 2021.

# Factory-fitted options.

## IN-CAR ENTERTAINMENT AND COMMUNICATIONS

	SE	SEL	R-Line	R-Line Tech	Black Edition	R	Basic RRP £ Excluding VAT	Total RRP £ Including VAT
'Dynaudio Confidence' premium soundpack	○	○	○	○	○	○	1,058.33	1,270.00
Innovision Cockpit	○	○	○	○	○	○	3,137.50	3,765.00
	-	-	○	●	●	●	3,054.17	3,665.00

## SAFETY AND SECURITY

Tyre pressure monitoring system		○	○	○	○	○	150.00	180.00
---------------------------------	--	---	---	---	---	---	--------	--------

## COMFORT AND CONVENIENCE

Ambient lighting pack – coloured <sup>1,2</sup>	-	○	○	○	○	●	300.00	360.00
Electric tailgate with power cover <sup>3</sup>	○	○	●	●	-	-	508.33	610.00
Heated front climate windscreen	○	○	○	○	○	○	291.67	350.00
Garage door opener	○	○	○	○	○	○	150.00	180.00
Heated front and rear seats	○	○	○	○	○	○	216.67	260.00
Increased fuel tank	○	○	○	○	○	-	87.50	105.00
Keyless entry/keyless start	○	○	○	●	-	-	600.00	720.00
Keyless entry/keyless start and full electric tailgate operation	○	○	-	-	-	-	1,045.83	1,255.00
	-	-	○	-	-	-	645.83	775.00
	-	-	-	○	●	●	91.67	110.00
Power latching for all doors	○	○	○	○	○	○	433.33	520.00
Panoramic sunroof	○	○	○	○	●	●	1,079.17	1,295.00

1 Must be ordered in conjunction with 'Vienna' or 'Savona' ergoComfort seats. 2 Not available in conjunction with net partition and luggage compartment mat with mechanical release of the rear seats. 3 Not available in conjunction with Keyless entry/keyless start and full electric tailgate operation.

● Standard equipment ○ Optional equipment - Not available. Factory-fitted options are subject to availability and extended delivery.

Volkswagen UK may change RRP's at any time (this includes where there are government changes in regulation and/or legislation). There may be a delay to any RRP displaying correctly on our materials. Always obtain prices from your chosen authorised Volkswagen retailer.

VAT IS CALCULATED AT 20%. EFFECTIVE FROM 1 APRIL 2021.

# Factory-fitted options.

## COMFORT AND CONVENIENCE (CONTINUED)

	SE	SEL	R-Line	R-Line Tech	Black Edition	R	Basic RRP £ Excluding VAT	Total RRP £ Including VAT
<b>Smoking pack</b>	○	○	○	○	○	○	45.83	55.00
<b>Sunblind</b>	○	○	○	○	○	○	158.33	190.00
<b>4Zone climate control</b>	○	○	●	●	●	●	754.17	905.00

1 Must be ordered in conjunction with 'Vienna' or 'Savona' ergoComfort seats. 2 Not available in conjunction with net partition and luggage compartment mat with mechanical release of the rear seats. 3 Not available in conjunction with Keyless entry/keyless start and full electric tailgate operation.

## DRIVER'S ASSISTANCE

### Driver's Assistance Pack Plus

Emergency Assist, driver intervention should sensors detect the driver is incapable of driving. Automatic hazard light activation while bringing the vehicle to a controlled stop within its lane

Front Cross Traffic Assist: Radar sensor controlled warning system for vehicles approaching from the sides at junctions, driveways and parking spaces. Two radar sensors integrated in the front bumper monitor traffic to intervene with emergency braking if the driver does not react

Predictive Pedestrian Protection: Camera and radar sensor controlled warning system to detect pedestrians on the edge of, or in the road

Proactive occupant protection – using sensors from the Front Assist monitoring system to detect critical situations with elevated accident potential from the front

Side scan: Radar sensor controlled warning system for lane changing and blind spots with visual warning via light in door mirror housing

Travel Assist: Camera and radar sensor controlled warning system to accelerate, brake and steer should the vehicle drift out of its lane, providing the driver's hands are on the wheel

### Head-up Display<sup>1</sup>

Driving information including current speed is laser projected directly onto the windscreen within the driver's field of vision helping to reduce the time that the driver's eyes are averted from the road

### High Beam Assist

Automatic sensing for switching between dipped and main beam

○	○	○	-	-	-	850.00	1,020.00
-	-	-	○	○	○	737.50	885.00
○	○	○	○	○	○	925.00	1,110.00
○	○	○	●	-	-	112.50	135.00

1 Please note, use of polarised lenses may impair the visibility of the Head-up Display. 2 Must be ordered in conjunction with headlight washers. 3 Park Assist and rear-view camera, Park Assist and Area view and 'Professional' Park Assist pack cannot be ordered in conjunction with each other. 4 Not available in conjunction with Driver's Assistance Pack Plus.

● Standard equipment ○ Optional equipment - Not available. Factory-fitted options are subject to availability and extended delivery.

Volkswagen UK may change RRP's at any time (this includes where there are government changes in regulation and/or legislation). There may be a delay to any RRP displaying correctly on our materials. Always obtain prices from your chosen authorised Volkswagen retailer.

VAT IS CALCULATED AT 20%. EFFECTIVE FROM 1 APRIL 2021.

# Factory-fitted options.

## DRIVER'S ASSISTANCE (CONTINUED)

	SE	SEL	R-Line	R-Line Tech	Black Edition	R	Basic RRP £ Excluding VAT	Total RRP £ Including VAT						
<b>Night vision</b>	Thermal imaging camera registers infrared radiation emitted by people or animals, displaying them in amber or red according to the level of risk, on a black and white image on the Digital Cockpit and optional Head-up Display. Visual warning and simultaneous pre-conditioning of brake assistance systems for optimum braking						O <sup>2</sup>	O <sup>2</sup>	O <sup>2</sup>	O <sup>2</sup>	O	O	1,300.00	1,560.00
<b>Park Assist and rear-view camera<sup>3</sup></b>	Sensor controlled steering aid to assist parallel or bay parking. Rear-view camera displayed via the vehicle's infotainment system display						O	O	●	●	-	-	475.00	570.00
<b>Park Assist and Area view<sup>3</sup></b>	Front, rear and side cameras to provide 360° exterior view of vehicle displayed via vehicle's infotainment system. Sensor controlled steering aid to assist parallel or bay parking						-	-	-	O	●	●	95.83	115.00
<b>'Professional' Park Assist pack<sup>3</sup></b>	Front, rear and side cameras to provide 360° exterior view of vehicle displayed via vehicle's infotainment system. Sensor controlled steering aid to assist parallel or bay parking. Remote control						-	-	-	O	-	-	612.50	735.00
<b>Side scan<sup>4</sup></b>	Radar sensor controlled warning system for lane changing and blind spots with visual warning via light in door mirror housing						O	O	O	O	O	-	420.83	505.00

1 Please note, use of polarised lenses may impair the visibility of the Head-up Display. 2 Must be ordered in conjunction with headlight washers. 3 Park Assist and rear-view camera, Park Assist and Area view and 'Professional' Park Assist pack cannot be ordered in conjunction with each other. 4 Not available in conjunction with Driver's Assistance Pack Plus.

● Standard equipment ○ Optional equipment - Not available. Factory-fitted options are subject to availability and extended delivery.

Volkswagen UK may change RRP's at any time (this includes where there are government changes in regulation and/or legislation). There may be a delay to any RRP displaying correctly on our materials. Always obtain prices from your chosen authorised Volkswagen retailer.

VAT IS CALCULATED AT 20%. EFFECTIVE FROM 1 APRIL 2021.

[Configure now >](#)



# Accessories.

Make a statement and further enhance your Touareg to suit your lifestyle and adventure by choosing from our wealth of stylish, innovative and sporty Volkswagen accessories. Choose from the high-quality carrier systems to the practical protection solutions and select the accessories to perfectly match your lifestyle.



**01 Roof box 340 litres**  
The stylish new range of Volkswagen roof boxes in matt black. Now not only are they superbly functional they look equally as good. Expand the carry capacity of your vehicle for when you are planning a holiday. Designed for customer fitting. 340 litres, maximum load capacity 50kg. Part number: 000 071 200

Image shown is for illustration purposes only and may not necessarily reflect UK specification. Models shown feature optional Sand Gold metallic paint which is no longer available.

# Protection.

## 01 Reversible luggage compartment mat

The luggage compartment reversible mat's finely woven upper velour surface protects the luggage compartment against dirt, while its plastic studs on the underside prevent cargo from sliding. In addition, the plastic loading sill protection protects the bumper against damage.

Part number: 760 061 210

## 02 Luggage compartment tray

The practical and extremely robust Volkswagen Genuine luggage compartment tray protects the luggage area against dirt and prevents items from sliding around. The plastic tray fits perfectly and is washable and acid-resistant. The surrounding raised rim of approx. 4 cm prevents liquids running out onto the vehicle floor.

Part number: 760 061 161

## 03 Front mudflaps – set of two

Long lasting and durable, the Volkswagen Genuine mudflaps effectively protect the underbody and bumpers against excessive dirt. They also significantly reduce the impact of dangerous road chippings and water spray.

Part number: 760 075 111

## 04 Rear mudflaps – set of two

Part number: 760 075 101

## 05 Front rubber floor mats – set of two

Protecting your vehicle interior against dirt and moisture, rubber mats are designed to fit perfectly, are easy to clean and have a non-slip underside.

Part number: 762 061 502 82 V

## Rear rubber floor mats – set of two (not shown)

Part number: 760 061 512 82 V





[Configure now >](#)



# Travel and transport.

### 01 Bicycle holder

Safely transport bicycles on the roof of your vehicle. The wheel rails are aerodynamically designed, and ensure the bicycle is correctly positioned. They enable you to use both hands to fix the wheels and frame. Thanks to the quick-fastening system, the bicycle holder is easy to fit onto the roof bars, without using any tools. The carrier also includes anti-theft protection. Suitable for maximum down tube widths of 80mm, bike weights of up to 20kg.

Part number: 000 071 128 F

### 02 Load bars

Have a lot more fun when you arrive by throwing a lot more up top before you depart. These city crash-tested roof bars are essential when you want to fit a ski and snowboard holder, a bicycle holder, a useful roof box and more besides.

Part number: 760 071 151



01



02

### 03 Compact III towbar mounted bicycle carrier

This clever carrier uses a super-simple quick release system to fit to your towing hitch, enabling you to transport three bicycles with a max weight of 54kg.

It is the smallest, lightest and most compact in its class for the towing hitch and even with bicycles attached, accessing the boot is easy with the newly developed foot switch. Its anti-theft locking device makes life difficult for thieves and when you don't need it, it folds up into its carry bag – locking automatically – to neatly fit in your spare wheel well. Maximum bicycle wheelbase 125cm.

Part number: 3C2 071 105 A



03

### 04 Electrically swivelling towbar including electrical kit

If you prefer to keep your options open, our electrically swivelling towbar has all the practicalities. It's got full integration into the vehicle's CAN-bus network and all electrical components including trailer stabilisation system support, switching to stand-by current and the adjustment of all the vehicle's assistance systems, it also swivels so it can be moved behind the bumper.

Part number: 760 092 160



04

### 05 Detachable towbar including 13-pin electrical installation kit (not shown)

Enhance your vehicle's transport capabilities with the Volkswagen Genuine detachable towing hitch and matching Volkswagen Genuine electrical installation kit. The towing hitch facilitates safe operation of trailers and carrier systems. The Volkswagen Genuine electrical installation kit (13-pin) guarantees the electrical supply and also safe trailer usage. The built-in group control unit is integrated into the vehicle's CAN bus and its features include support for car-trailer stabilisation.

Part number: 760 092 150

# Styling and technology.



01

### 01 Running boards

Integrated running boards enhance the Touareg's unique SUV character, and make roof loading easier. With anti-slip inserts they also offer a safe entry into the vehicle, especially for children. Manufactured from silver anodised aluminium, they have a 200kg per step carrying capacity and are compatible with mud flaps as well as unrestricted use of a car jack.

Part number: 761 071 691

### 02 Rear chrome strip

Protective strip for the lower edge of the rear tailgate. It not only enhances the appearance of the vehicle with its chrome look effect, it also acts as an edge protector.

Part number: 760 071 360



02

### 03 Meta Trak S5-VTS – GPS Tracker including 1 year subscription

Take control of exactly what's happening with your vehicle, wherever you are, with our easy-to-use app and relax knowing our Secure Operating Centre is monitoring your vehicle 24/7. System includes live tracking, 24/7 control room monitoring, driver recognition ID tags, instant alerts to your phone, low battery alert, track multiple vehicles with one login, journey history and score, geo-fencing, UK and Europe coverage, service and transport modes.

Part number: ZGB 000 054 003



03

# Accessories. Your Volkswagen your way.

	Part number	Total RRP £ Including VAT	Total fitted RRP £ Including VAT		Part number	Total RRP £ Including VAT	Total fitted RRP £ Including VAT
<b>PROTECTION AND CAR CARE</b>							
Rubber floor mats – front – black	762 061 502 82 V	59.00	-	Luggage compartment tray	760 061 161	90.00	-
Rubber floor mats – rear – black	760 061 512 82 V	45.50	-	Reversible luggage compartment mat with bumper protection	760 061 210	122.50	-
Mudflaps – front	760 075 111	-	141.00	Rear bumper protection film – transparent	760 061 197	-	95.50
Mudflaps – rear	760 075 101	-	141.00				
<b>TRAVEL AND TRANSPORT</b>							
Load bars	760 071 151	266.50	-	Towbar – detachable, including electrical kit	760 092 150	-	1,103.50
Bicycle holder	000 071 128 F	117.50	-	Towbar – swiveling, including electrical kit	760 092 160	-	2,017.00
Volkswagen roof box – 340 litres – black	000 071 200	270.50	-	Compact III towbar mounted bicycle carrier	3C2 071 105 A	610.00	-
Volkswagen roof box – 340 litres – titanium	000 071 200 AA	491.50	-	Basic II Bicycle Carrier - Holds up to 2 bikes, no boot access while mounted	000 071 105 L	458.00	-
Volkswagen roof box – 460 litres – black	000 071 200 AC	408.50	-	Safety kit	000 093 059	26.00	-
Luggage net	1T0 065 111	64.00	-	Partition grille (dog guard) – transverse	ZGB CR7 017 221	-	135.00
				Partition grille (dog guard) – longitudinal	ZGB CR7 017 222	-	115.00
<b>STYLING AND TECHNOLOGY</b>							
Running boards – silver-anodised aluminium and black anti-slip inserts	761 071 691	-	890.00	Meta Trak S5-VTS – GPS Tracker including 1 year subscription	ZGB 000 054 003	-	499.00
Rear chrome strip	760 071 360	-	125.00	UTR (Universal Traffic Recorder) – front	000 063 511 B	-	419.00
				UTR (Universal Traffic Recorder) – front and rear	000 063 511 C	-	626.50

Accessory prices are the manufacturer's Recommended Retail Prices (RRP), shown exclusive and inclusive of fitting where applicable, inclusive of appropriate VAT, and are charged in addition to recommended 'On the road' retail price paid for the vehicle. For full details, please contact your authorised Volkswagen retailer.

Volkswagen UK may change RRP's at any time (this includes where there are government changes in regulation and/or legislation). There may be a delay to any RRP displaying correctly on our materials. Always obtain prices from your chosen authorised Volkswagen retailer.

VAT IS CALCULATED AT 20%, EXCEPT RETAILER SUPPLIED CHILD SAFETY SEATS WHERE IT IS CALCULATED AT 5%. EFFECTIVE FROM 1 APRIL 2021.

# Alloy wheels.



01  
SE SEL



02  
RL RLT\*



03  
RLT



04  
BE



05  
R



06  
SE SEL



07  
SE SEL



08  
SEL RL RLT BE\*



09  
R

01 'Osorno' 8J x 19" alloy wheels with 255/55 R19 tyres and anti-theft wheel bolts.

02 'Braga' Dark Graphite diamond-turned 9J x 20" alloy wheels with 285/45 R20 tyres and anti-theft wheel bolts.

03 'Nevada' Black diamond-turned 9J x 20" alloy wheels with 285/45 R20 tyres and anti-theft wheel bolts.

04 'Suzuka' Dark Gloss Black diamond-turned 9½J x 21" alloy wheels with 285/45 R21 tyres and anti-theft wheel bolts.

05 'Estoril' Black diamond-turned 9½J x 22" alloy wheels with 285/35 R22 tyres and anti-theft wheel bolts.

06 'Tirano' Black diamond-turned 8½J x 19" alloy wheels with 255/55 R19 tyres and anti-theft wheel bolts.

07 'Montero' Silver 9J x 20" alloy wheels with 285/45 R20 tyres and anti-theft wheel bolts.

08 'Suzuka' Dark Graphite diamond-turned<sup>1</sup> 9½J x 21" alloy wheels with 285/40 R21 tyres and anti-theft wheel bolts.

09 'Estoril' Gloss Black 9½J x 22" alloy wheels with 285/35 R22 tyres and anti-theft wheel bolts.

Standard
  Optional

SE | SE SEL | SEL RL | R-Line RLT | R-Line Tech BE | Black Edition R | R

\* No cost option.

<sup>1</sup> Must be ordered in conjunction with optional Air suspension, Air suspension with rear axle steering or 'Professional' Chassis pack. Images shown feature optional metallic and metallic signature paint.

Please note, choosing larger alloy wheels than standard, as an option, may result in increased fuel consumption. This is due to the fact that larger wheels have both more aerodynamic drag and more mechanical drag, resulting in increased rolling resistance and increased wind resistance.

[Configure now >](#)



# Paint.



SE SEL RL RLT BE R



SE SEL RL RLT BE R



SE SEL RL RLT BE R



SE SEL R



SE SEL RL RLT BE R



SE SEL RL RLT BE



SE SEL RL RLT BE



R



SE SEL RL RLT BE R



SE SEL RL RLT BE R

01 Pure White Non-Metallic OQ

02 Silicon Grey Metallic 3M

03 Tamarind Brown Metallic 3V

04 Sechura Beige Metallic 5Q

05 Antimonial Silver Metallic L5

06 Malbec Red Ultra Metallic X4

07 Aquamarine Blue Ultra Metallic 8H

08 Lapiz Blue Metallic Signature L9

09 Deep Black Pearl Effect 2T

10 Moonlight Blue Pearl Effect C7

11 Oryx White Premium Signature OR



SE SEL RL RLT BE R

Standard Optional

SE | SE SEL | SEL RL | R-Line RLT | R-Line Tech BE | Black Edition R | R

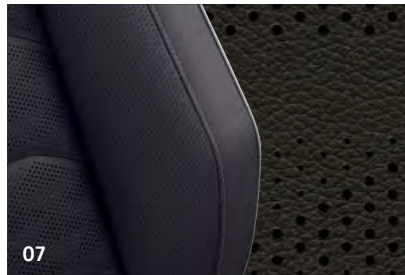
Please note: Colour range is reproduced for illustration purposes only. Actual on-car colours may vary from those shown, as screen technology does allow exact reproduction of the paint colours.

Models shown are for illustration purposes only and may not reflect UK specification.

# Upholstery.



01



SE SEL RL



SE SEL RL



SE SEL RL



RL RLT BE



SE SEL RL



SE SEL RL



RL RLT BE



R

- 01 'Graphite' cloth Soul VM
- 02 'Vienna Black' leather\* Soul VM
- 03 R-Line 'Vienna' leather\* ergoComfort seats 'R-Line' Soul ID
- 04 R 'Puglia' perforated leather\* active front climate seats 'R' Soul/Blue OF
- 05 'Vienna' leather\* ergoComfort seats Soul VM
- 06 'Vienna' leather\* ergoComfort seats Mistral/Grigio VD
- 07 'Savona' leather\* ergoComfort seats† Soul VM
- 08 'Savona' leather\* ergoComfort seats† Mistral/Grigio VD
- 09 R-Line 'Savona' leather\* ergoComfort seats with Burnt Grey and Carbon inserts† R-Line Soul ID

Standard  Optional  
 SE | SE SEL | SEL RL | R-Line RLT | R-Line Tech BE | Black Edition R | R

\* Some parts of leather interior will contain artificial leather.  
 † Swatches shown feature optional Active climate seats.

Please note: Swatches reproduced for illustration purposes only. Actual upholstery colours may vary from those shown, as screen technology does not allow exact reproduction of the upholstery colours

# Combinations.

	Contrast stitching	Seat piping	Memory pack*	Memory pack plus*	Front climate seats*†	Carpet	Dashboard Upper/lower	Rooflining	Pure White OQ Non-Metallic	Silicon Grey 3M Metallic*	Tamarind Brown 3V Metallic*	Sechura Beige 5Q Metallic*	Antimonial Silver L5 Metallic*	Malbec Red X4 Ultra Metallic*	Aquamarine Blue 8H Ultra Metallic*	Lapiz Blue L9 Metallic Signature*	Deep Black 2T Pearl Effect*	Moonlight Blue C7 Pearl Effect*	Oryx White OR Premium Signature*
<b>'Graphite' cloth</b>																			
<b>Standard on SE models</b>																			
Soul VM	-	-	-	-	-	Soul	Soul/Soul	Mistral	●	●	●	●	●	●	●	-	●	●	●
<b>'Vienna Black' leather†</b>																			
<b>Standard on SEL and R-Line models</b>																			
Soul VM	-	-	-	-	-	Soul	Soul/Soul	Mistral	●	●	●	●	●	●	●	-	●	●	●
Soul VM	-	-	-	-	-	Soul	Soul/Soul	Soul	●	●	●	-	●	●	●	-	●	●	●
<b>'Vienna' leather† ergoComfort seats</b>																			
<b>Standard on R-Line Tech and Black Edition models</b>																			
'R-Line' Soul ID	Crystal Grey	-	●	○	○	Soul	Soul/Soul	Soul black	●	●	●	-	●	●	●	-	●	●	●
<b>'Puglia' perforated leather† active front climate seats</b>																			
<b>Standard on R models</b>																			
'R' Soul/Blue OF	Blue	Blue	○	○	●	Soul	Soul/Soul	Soul black	●	●	●	●	●	-	-	●	●	●	●
<b>'Vienna Black' leather†</b>																			
<b>Optional on SE models</b>																			
Soul VM	-	-	-	-	-	Soul	Soul/Soul	Mistral	●	●	●	●	●	●	●	-	●	●	●
<b>'Vienna' leather† ergoComfort seats</b>																			
<b>Optional on SE, SEL and R-Line models</b>																			
Soul VM	Ceramique	-	○	○	○	Soul	Soul/Soul	Mistral	○	○	○	○	○	○	○	-	○	○	○
Soul VM	Ceramique	-	○	○	○	Soul	Soul/Soul	Soul	○	○	○	-	○	○	○	-	○	○	○
Mistral/Grigio VD	-	-	○	○	-	Grigio	Grigio/Mistral	Mistral	○	○	-	-	○	-	○	-	○	○	○
<b>'Vienna' leather† ergoComfort seats</b>																			
<b>Optional on R-Line models</b>																			
R-Line Soul ID	Crystal Grey	-	○	○	○	Soul	Soul/Soul	Soul black	○	○	○	-	○	○	○	-	○	○	○
<b>'Savona' leather† ergoComfort seats</b>																			
<b>Optional on SE, SEL and R-Line models</b>																			
Soul VM	Ceramique	Ceramique	○	○	○	Soul	Soul/Soul	Mistral	○	○	○	○	○	○	○	-	○	○	○
Soul VM	Ceramique	Ceramique	○	○	○	Soul	Soul/Soul	Soul	○	○	○	-	○	○	○	-	○	○	○
Mistral/Grigio VD	London Grey	Mistral Grey	○	○	○	Grigio	Grigio/Mistral	Mistral	○	○	-	-	○	-	○	-	○	○	○
<b>'Savona' leather† ergoComfort seats with Burnt Grey and Carbon inserts</b>																			
<b>Optional on R-Line, R-Line Tech and Black Edition models</b>																			
R-Line Soul ID	Crystal Grey	Crystal Grey	○	○	○	Soul	Soul/Soul	Soul black	○	○	○	-	○	○	○	-	○	○	○
R-Line Soul ID	Crystal Grey	Crystal Grey	●	○	○	Soul	Soul/Soul	Soul black	○	○	○	-	○	○	○	-	○	○	○

\* Metallic, ultra metallic, metallic signature, pearl effect and premium signature paints, and leather upholstery, memory packs and Active front climate seats are optional at extra cost.

† Some parts of leather interior will contain artificial leather. ‡ Standard on R models. ● Standard. - Not available.

# Dimensions.

## Exterior dimensions

Length - min./max., mm	4878/5008
Width - inc. door mirrors, mm	2193
Height - max., mm	1717
Height - opened tailgate/floor, mm	2131
Wheelbase, mm	2904
Front track width - min./max., mm	1653/1669
Rear track width - min./max., mm	1669/1685
Turning circle, m	12.19

## Interior dimensions

Effective headroom - front, mm (with sunroof)	1049 (1049)
Effective headroom - rear, mm	990
Interior width - front, mm	1584
Interior width - rear, mm	1547

## Maximum luggage capacity, litres VDA measuring method using 200 x 100 x 50mm blocks

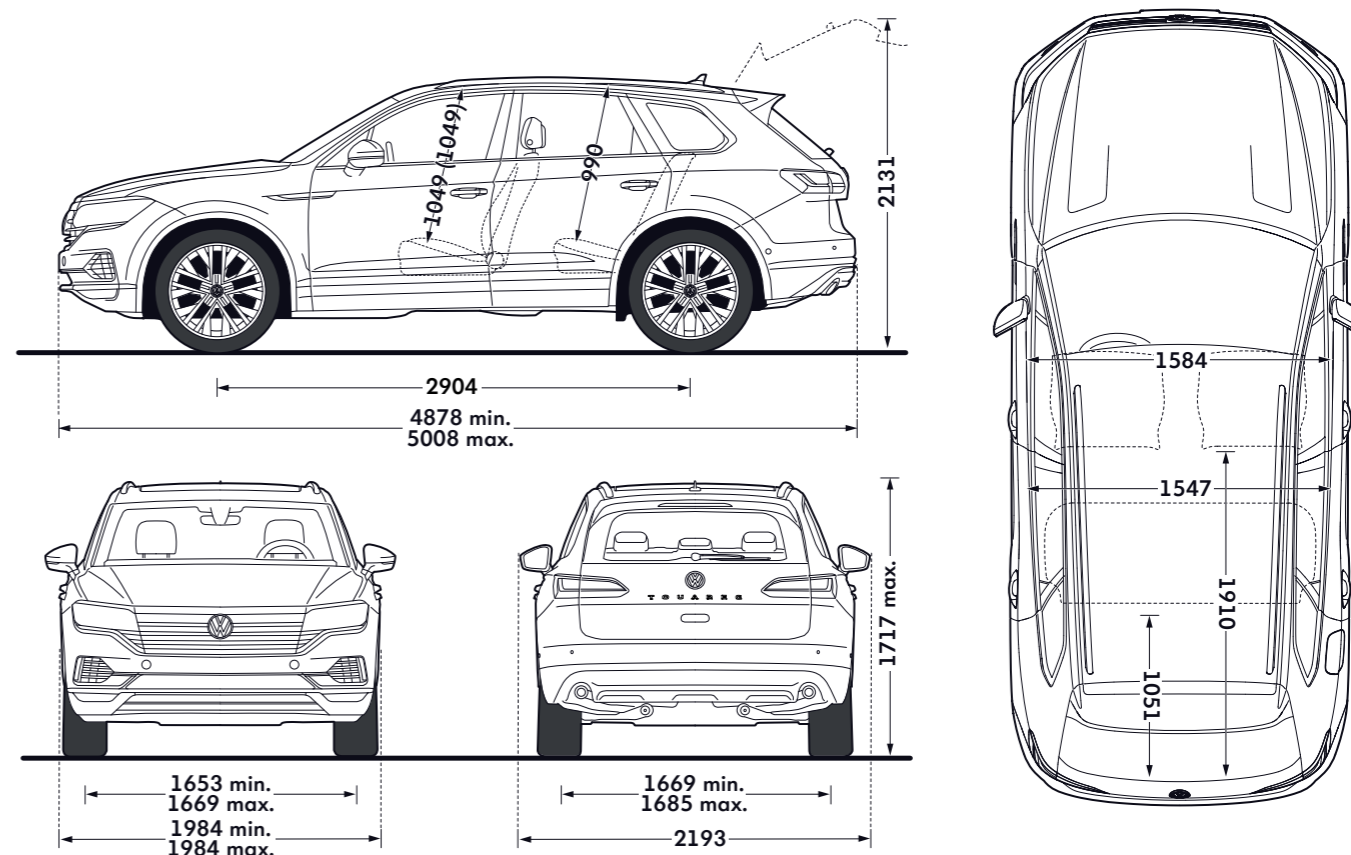
With rear seats upright	810
With rear seats folded	1800

## Off-road capabilities

Ground clearance - unladen, mm	215 (190)
Ground clearance - fully laden, mm	TBA
Ramp angle in degrees	13.5
Approach angle in degrees	23.3
Departure angle in degrees	17.2
Maximum gradient climbing angle in degrees	60
Traverse angle in degrees	35
Wading depth, mm	500 (580)

Figures shown are for standard specification models. The addition of certain factory-fitted options and/or accessories may affect some of the dimensions shown. Off-road capability figures may vary by model, load level and type of suspension, as well as equipment, tyres and terrain. Please consult your authorised Volkswagen retailer, or visit [www.volkswagen.co.uk](http://www.volkswagen.co.uk) for more details.

( ) Optional air suspension.



All figures in millimetres. On illustrations, where arrows and figures are shown inside of the vehicle, the measurements are for interior dimensions. Where arrows and figures are shown outside of the vehicle, the measurements are for exterior dimensions.



# VED and additional 'On the road' costs.

Diesel vehicles that do not meet the RDE2 standard will be charged a supplement on their 'First year rate' to the effect of moving up by one VED (Vehicle Excise Duty) band. The following tables give the rates of vehicle tax on cars registered on or after 1 April 2021. Please refer to the Model Prices pages to confirm which models are RDE2 compliant.

## 'FIRST YEAR RATE' VED – CARS REGISTERED ON OR AFTER 1.4.2021 BASED ON CO<sub>2</sub> EMISSIONS AND FUEL TYPE

Petrol/Diesel<sup>†</sup> – 'First year rate' VED

CO <sub>2</sub> emissions (g/km)	Petrol/Diesel <sup>†</sup> VED £	Petrol total 'On the road' costs £
0	0.00	690.00
1-50	10.00	700.00
51-75	25.00	715.00
76-90	115.00	805.00
91-100	140.00	830.00
101-110	160.00	850.00
111-130	180.00	870.00
131-150	220.00	910.00
151-170	555.00	1,245.00
171-190	895.00	1,585.00
191-225	1,345.00	2,035.00
226-255	1,910.00	2,600.00
Over 255	2,245.00	2,935.00

Diesel<sup>‡</sup> – 'First year rate' VED

CO <sub>2</sub> emissions (g/km)	Diesel <sup>‡</sup> VED £	Diesel total 'On the road' costs £
0	0.00	690.00
1-50	25.00	715.00
51-75	115.00	805.00
76-90	140.00	830.00
91-100	160.00	850.00
101-110	180.00	870.00
111-130	220.00	910.00
131-150	555.00	1,245.00
151-170	895.00	1,585.00
171-190	1,345.00	2,035.00
191-225	1,910.00	2,600.00
226-255	2,245.00	2,935.00
Over 255	2,245.00	2,935.00

Alternative fuel – 'First year rate' VED

CO <sub>2</sub> emissions (g/km)	Alternative fuel VED £	Alternative fuel total 'On the road' costs £
0	0.00	690.00
1-50	0.00	690.00
51-75	15.00	705.00
76-90	105.00	795.00
91-100	130.00	820.00
101-110	150.00	840.00
111-130	170.00	860.00
131-150	210.00	900.00
151-170	545.00	1,235.00
171-190	885.00	1,575.00
191-225	1,335.00	2,025.00
226-255	1,900.00	2,590.00
Over 255	2,235.00	2,925.00

The way VED (Vehicle Excise Duty) vehicle tax is calculated will change for vehicles that are first registered with the DVLA on, or after, 1 April 2018. All new diesel vehicles registered after 1 April 2018 that do not meet the RDE2 standard will be charged a supplement on their 'First year rate' to the effect of moving up by one VED (Vehicle Excise Duty) band.

If a new vehicle is registered on or after 1 April 2018, after the 'First year rate' VED the majority of vehicles move to the 'Standard rate' of vehicle tax which is £155 a year.

The 'First year rate' will be based on the CO<sub>2</sub> emissions, fuel type and the list price of the vehicle supplied by the Manufacturer or Retailer as applicable on the day before the vehicle is first registered and taxed.

After the 'First year rate', all vehicles with zero emissions will be exempt from the 'Standard rate' of vehicle tax. All petrol and diesel vehicles will pay a standard rate of £155 a year, and alternative fuel vehicles will pay a standard rate of £145 a year.

Petrol or diesel vehicles with a list price over £40,000 at first registration will pay £490 a year, after the first 'First year rate' vehicle tax, for a period of five years. This comprises the £155 'Standard rate' and £335 additional rate. After five years the vehicle tax will revert to the 'Standard rate' of £155 per year.

Alternative fuel vehicles – hybrids, bi-ethanol or LPG, with a list price over £40,000 at first registration will pay £480 a year after the 'First year rate' vehicle tax for a period of five years. This comprises the £145 'Standard rate' and £335 additional rate which reverts to £145 'Standard rate' after five years.

Vehicles with a list price exceeding £40,000 (excluding vehicles with zero emissions) will pay the additional rate of £335 a year for a further five year period, after the 'First year rate' tax. After the five year period these vehicles will pay zero VED tax.

<sup>†</sup> Diesel cars that are tested to RDE2 standards. <sup>‡</sup> Diesel cars, including those tested to RDE standards.

## 'STANDARD RATE' VED

'Standard rate' VED based on fuel type

Fuel type	CO <sub>2</sub> emissions (g/km)	'Standard rate' 12 months VED £
Electric/Other	0	0.00
Petrol/Diesel	1 - Over 255	155.00
Alternative	1 - Over 255	145.00

After the 'First year rate', all vehicles with zero emissions will be exempt from the 'Standard rate' of vehicle tax. All petrol and diesel vehicles will pay a standard rate of £155 a year, and alternative fuel vehicles will pay a standard rate of £145 a year.

## 'STANDARD RATE' – OVER £40,000 RRP

'Standard rate' VED for vehicles over £40,000 list price – five year annual rate

Fuel type	'Standard rate' 12 months VED £	Additional rate £	Total annual payment £
Electric	0.00	0.00	0.00
Petrol/Diesel	155.00	335.00	490.00
Alternative	145.00	335.00	480.00

Petrol or diesel vehicles with a list price over £40,000 at first registration pay £490 a year after the 'First year rate' for a period of five years. Alternative fuel vehicles over £40,000 at first registration – hybrids, bi-ethanol or LPG, pay £480 a year after the 'First year rate' for a period of five years. After five years, vehicles will revert to their 'Standard rate' tax depending on fuel type. Electric or vehicles producing zero emissions over £40,000 at first registration are exempt from any charge after the 'First year rate'.

## ADDITIONAL 'OTR' COSTS

Additional 'On the road' costs

Delivery to retailer	509.17
Number plates	20.00
VAT	105.83
Vehicle first registration fee	55.00
Total	690.00

The total 'On the road' costs above for petrol, diesel, electric and alternative fuel vehicles include the applicable 'First year rate' VED charge plus the 'On the road' costs as detailed above.

VAT IS CALCULATED AT 20%. EFFECTIVE FROM 1 APRIL 2021.

# Environmental information.

5-DOOR 4X4 RANGE.		RDE2 Compliant	Fuel	Transmission	Output, PS	CO <sub>2</sub> emission, g/km <sup>1</sup> , Min. WLTP test cycle	CO <sub>2</sub> emission, g/km <sup>1</sup> , Max. WLTP test cycle	Combined <sup>1</sup> fuel consumption mpg, Min.	Combined <sup>1</sup> fuel consumption mpg, Max.	Combined <sup>1</sup> fuel consumption ltr/100km, Min.	Combined <sup>1</sup> fuel consumption ltr/100km, Max.
SE ‡	3.0 ltr V6 TDI SCR 4MOTION ‡	Yes	Diesel	8-spd auto tiptronic	231	214	221	33.6	34.4	8.4	8.2
	3.0 ltr V6 TDI SCR 4MOTION ‡	Yes	Diesel	8-spd auto tiptronic	286	213	223	33.2	34.9	8.5	8.1
SEL ‡	3.0 ltr V6 TSI 4MOTION ‡	Yes	Petrol	8-spd auto tiptronic	340	249	263	24.4	25.7	11.6	11.0
	3.0 ltr V6 TDI SCR 4MOTION ‡	Yes	Diesel	8-spd auto tiptronic	231	214	227	32.5	34.4	8.7	8.2
	3.0 ltr V6 TDI SCR 4MOTION ‡	Yes	Diesel	8-spd auto tiptronic	286	214	226	32.8	34.4	8.6	8.2
R-LINE ‡	3.0 ltr V6 TSI 4MOTION ‡	Yes	Petrol	8-spd auto tiptronic	340	251	264	24.4	25.4	11.6	11.1
	3.0 ltr V6 TDI SCR 4MOTION ‡	Yes	Diesel	8-spd auto tiptronic	231	216	227	32.5	34.0	8.7	8.3
	3.0 ltr V6 TDI SCR 4MOTION ‡	Yes	Diesel	8-spd auto tiptronic	286	216	226	32.8	34.4	8.6	8.2
R-LINE TECH ‡	3.0 ltr V6 TSI 4MOTION ‡	Yes	Petrol	8-spd auto tiptronic	340	252	264	24.4	25.4	11.6	11.2
	3.0 ltr V6 TDI SCR 4MOTION ‡	Yes	Diesel	8-spd auto tiptronic	231	217	227	32.5	34.0	8.7	8.3
	3.0 ltr V6 TDI SCR 4MOTION ‡	Yes	Diesel	8-spd auto tiptronic	286	217	226	32.8	34.0	8.6	8.3
BLACK EDITION ‡	3.0 ltr V6 TSI 4MOTION ‡	Yes	Petrol	8-spd auto tiptronic	340	254	264	24.4	25.2	11.6	11.1
	3.0 ltr V6 TDI SCR 4MOTION ‡	Yes	Diesel	8-spd auto tiptronic	231	219	227	32.5	33.6	8.7	8.4
	3.0 ltr V6 TDI SCR 4MOTION ‡	Yes	Diesel	8-spd auto tiptronic	286	219	226	32.8	33.6	8.6	8.4

1 Figures for the Volkswagen Touareg, including petrol, diesel and hybrid vehicles. Plug-in hybrid vehicles require mains electricity for charging. Figures for hybrid vehicles were obtained using a combination of battery power and fuel. Figures shown are for comparability purposes; only compare fuel consumption, CO<sub>2</sub> and electric range figures with other vehicles tested to the same technical procedures. These figures may not reflect real life driving results, which will depend upon a number of factors including the accessories fitted (post-registration), variations in weather, driving styles and vehicle load. Data correct at 11.3.2021. Figures quoted are for a range of configurations (including non-UK) and are subject to change due to ongoing approvals/changes. For more information, please see [www.volkswagen.co.uk/need-help/wltp](http://www.volkswagen.co.uk/need-help/wltp) or consult your authorised Volkswagen retailer.

‡ These vehicles are WLTP (Worldwide Harmonised Light-Duty Vehicles Test Procedure) type approved vehicles. More information is available at [www.volkswagen.co.uk/need-help/wltp](http://www.volkswagen.co.uk/need-help/wltp). SCR (Selective Catalytic Reduction) requires AdBlue®, [please click here](#) or visit [www.volkswagen.co.uk/technology/adblue](http://www.volkswagen.co.uk/technology/adblue) for more details. RDE2 refers to Real Driving Emissions Step 2.

EFFECTIVE FROM 1 APRIL 2021.

# Environmental information – TSI eHybrid.

PETROL/ELECTRIC HYBRID 5-DOOR 4X4 RANGE.	RDE2 Compliant	Fuel	Transmission	Combined output, PS	Combined CO <sub>2</sub> emission, g/km <sup>1</sup> Min. WLTP test cycle	Combined CO <sub>2</sub> emission, g/km <sup>1</sup> Max. WLTP test cycle	Combined Fuel Consumption <sup>1</sup> mpg/ltr per 100km, Min	Combined Fuel Consumption <sup>1</sup> mpg/ltr per 100km, Max	Combined Energy Consumption <sup>1</sup> miles/kWh	Combined Electric Range, miles/km (WLTP) <sup>1</sup>	City Electric Range, miles/km (WLTP) <sup>1</sup>
R <sup>‡</sup> 3.0 ltr V6 TSI eHybrid 4MOTION <sup>‡</sup>	Yes	Petrol/Electric PHEV	8-spd auto tiptronic	462	67	69	94.2./3.0	91.1./3.1	3.0	28/45	29/47

<sup>1</sup> Figures for the Volkswagen Touareg, including petrol, diesel and hybrid vehicles. Plug-in hybrid vehicles require mains electricity for charging. Figures for hybrid vehicles were obtained using a combination of battery power and fuel. Figures shown are for comparability purposes; only compare fuel consumption, CO<sub>2</sub> and electric range figures with other vehicles tested to the same technical procedures. These figures may not reflect real life driving results, which will depend upon a number of factors including the accessories fitted (post-registration), variations in weather, driving styles and vehicle load. Data correct at 11.3.2021. Figures quoted are for a range of configurations (including non-UK) and are subject to change due to ongoing approvals/changes. For more information, please see [www.volkswagen.co.uk/need-help/wltp](http://www.volkswagen.co.uk/need-help/wltp) or consult your authorised Volkswagen retailer.

<sup>‡</sup> These vehicles are WLTP (Worldwide Harmonised Light-Duty Vehicles Test Procedure) type approved vehicles. More information is available at [www.volkswagen.co.uk/need-help/wltp](http://www.volkswagen.co.uk/need-help/wltp). RDE2 refers to Real Driving Emissions Step 2.

EFFECTIVE FROM 1 APRIL 2021.

# AdBlue®.

Your Volkswagen car is fitted with an advanced emissions control system, which helps your vehicle meet EURO 6 exhaust gas regulations.

## How does the system work?

AdBlue®, a water/urea based additive, is stored in a tank (like diesel fuel), however, unlike fuel it is not injected into the engine, but directly into a specially modified part of the vehicle's exhaust. This begins a chemical reaction which removes the polluting oxides of nitrogen (NOx), converting them into harmless oxygen and nitrogen in a process known as Selective Catalytic Reduction, or SCR for short. SCR is only applicable to diesel engines and the more economically you drive, typically, the less AdBlue® you will use.

The size of the AdBlue® tank fitted to your car will vary depending on which Volkswagen model you have, therefore the interval between top-ups will vary. In addition, many factors such as mileage, journey type, driving style and environmental conditions can influence how much AdBlue® is consumed. A passenger car can consume approximately 1.5 litres of AdBlue® every 620 miles (1.0–1.5 litres for the Passat and Passat Estate). The chart below details the AdBlue® tank size and location.

Model (SCR derivatives only)	Tank size (Approximately)	AdBlue® tank filler location	Initial warning of low AdBlue® (2,400km/1,500 miles to go) can be expected to occur at:
Touareg	12 litres	Behind the fuel filling flap	6,000 to 7,000 miles or sooner*

\* Distances are approximate and the warning light may come on sooner depending on driving style, journey type, engine and vehicle load and environmental conditions.

## How will I know if the system needs topping-up?

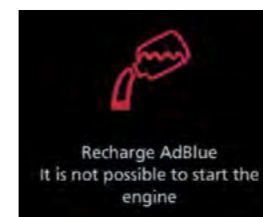
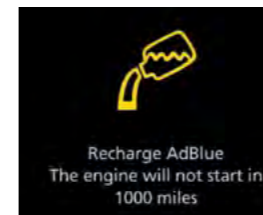
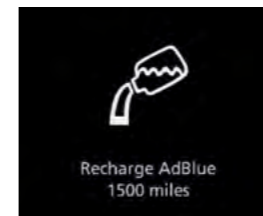
A series of warnings will be given via the driver information system, accompanied by advice/messages.

The first message is displayed when the remaining range is approximately 1,500 miles, and is repeated every 62 miles until the range reaches 1,000 miles, at which point the warning turns amber. This warning is repeated every 31 miles and is accompanied by an audible tone. If these warnings are not acted upon, the warning turns red; once this happens the car will not restart once the ignition is turned off. This is not a fault, but a required feature of the system. If this stage is reached the system will need a full top-up before the car can be restarted. Further information is available in the vehicle handbook.

## Why should I use a Volkswagen Authorised repairer for top-ups?

- AdBlue® top-ups at authorised repairers are extremely competitive and charged by the litre, so you only pay for what you need
- Authorised repairer staff are trained to handle AdBlue®
- AdBlue® tanks need special adaptors on fillers to ensure there are no spillages
- Volkswagen do not recommend keeping top-up bottles in cars

The top-up bottles supplied by Volkswagen have a capacity of 1.89 litres, and come complete with the adaptor nozzles that fit the Volkswagen AdBlue® tank. These are available from all Volkswagen Authorised repairers.



AdBlue® warning lights.

**Important information**

- AdBlue® is not a fuel additive. This is why there is a separate AdBlue® tank
- If you put AdBlue® in your fuel tank by mistake, please do not start the engine, but contact a retailer for help
- Put only AdBlue® in the AdBlue® tank; do not fill the AdBlue® tank with any other liquids
- Prevent anything from contaminating AdBlue®
- If small quantities of AdBlue® come into contact with the vehicle's paintwork, for example, wipe them off and if necessary rinse the area with water

# CO<sub>2</sub> emissions, BIK % and VED Bands with optional wheels.

## Effect of wheel size on CO<sub>2</sub> emissions, BIK % and VED Bands.

Choosing alternative alloy wheels than standard, as an option, may result in different fuel consumption as well as different CO<sub>2</sub> emissions and subsequently an alternative Vehicle Excise Duty (VED) Band, while BIK rates paid by company car drivers may differ. This is due to the fact that different wheels have both alternative aerodynamic drag and mechanical drag, resulting in different rolling resistance and wind resistance. As a result, the VED Band that the vehicle falls into may differ from its original VED Band when fitted with standard size wheels. In some instances, the recommended 'On the road' retail price paid for the vehicle may change as a result of the change in VED rate. The chart below shows CO<sub>2</sub> emissions and the related VED Bands for vehicles with both standard-fit wheels and larger optional alloy wheels, as well as the different cost payable due to a change in VED Band if applicable.

5-DOOR 4X4 RANGE.				RDE2 Compliant	Output, PS	Standard wheel size	CO <sub>2</sub> emission, g/km <sup>1</sup> , WLTP test cycle, standard wheels	First year VED £, standard wheels	BIK % with standard wheel size <sup>2</sup>	Optional alloy wheel and size	CO <sub>2</sub> emission, g/km <sup>1</sup> , WLTP test cycle, optional alloy wheels	First year VED £, optional wheels	BIK % with optional wheel size <sup>2</sup>
SE ‡	3.0 ltr V6 TDI SCR 4MOTION ‡	8-spd auto tiptronic	Yes	231	19"	214	1,345.00	37	19" Tirano Black diamond-turned	TBA	TBA	TBA	
				231	19"	214	1,345.00	37	20" Montero Silver	214	1,345.00	37	
	3.0 ltr V6 TDI SCR 4MOTION ‡	8-spd auto tiptronic	Yes	286	19"	213	1,345.00	37	19" Tirano Black diamond-turned	213	1,345.00	37	
				286	19"	213	1,345.00	37	20" Montero Silver	214	1,345.00	37	
SEL ‡	3.0 ltr V6 TSI 4MOTION ‡	8-spd auto tiptronic	Yes	340	19"	249	1,910.00	37	19" Tirano Black diamond-turned	248	1,910.00	37	
				340	19"	249	1,910.00	37	20" Montero Silver	249	1,910.00	37	
				340	19"	249	1,910.00	37	21" Suzuka Dark Graphite diamond-turned	250†	1,910.00	37	
	3.0 ltr V6 TDI SCR 4MOTION ‡	8-spd auto tiptronic	Yes	231	19"	214	1,345.00	37	19" Tirano Black diamond-turned	213	1,345.00	37	
				231	19"	214	1,345.00	37	20" Montero Silver	214	1,345.00	37	
				231	19"	214	1,345.00	37	21" Suzuka Dark Graphite diamond-turned	216†	1,345.00	37	
	3.0 ltr V6 TDI SCR 4MOTION ‡	8-spd auto tiptronic	Yes	286	19"	214	1,345.00	37	19" Tirano Black diamond-turned	213	1,345.00	37	
				286	19"	214	1,345.00	37	20" Montero Silver	214	1,345.00	37	
				286	19"	214	1,345.00	37	21" Suzuka Dark Graphite diamond-turned	216†	1,345.00	37	

1 Figures for the Volkswagen Touareg, including petrol, diesel and hybrid vehicles. Plug-in hybrid vehicles require mains electricity for charging. Figures for hybrid vehicles were obtained using a combination of battery power and fuel. Figures shown are for comparability purposes; only compare fuel consumption, CO<sub>2</sub> and electric range figures with other vehicles tested to the same technical procedures. These figures may not reflect real life driving results, which will depend upon a number of factors including the accessories fitted (post-registration), variations in weather, driving styles and vehicle load. Data correct at 11.3.2021. Figures quoted are for a range of configurations (including non-UK) and are subject to change due to ongoing approvals/changes. For more information, please see [www.volkswagen.co.uk/need-help/wltp](http://www.volkswagen.co.uk/need-help/wltp) or consult your authorised Volkswagen retailer.

2 The BIK charges quoted reflect the charges which apply to vehicles registered after 6 April 2021. These charges may differ from any charges displayed or quoted before 6 April 2021. The BIK % figure quoted includes the 4% diesel supplement, where applicable. Please note: the increase in VED and BIK rate that is payable is in addition to the cost of the optional alloy wheels. Please consult your Volkswagen retailer for full details.

‡ These vehicles are WLTP (Worldwide Harmonised Light-Duty Vehicles Test Procedure) type approved vehicles. More information is available at [www.volkswagen.co.uk/need-help/wltp](http://www.volkswagen.co.uk/need-help/wltp).

† Figures shown are Suzuka Dark Graphite diamond-turned alloy wheels in conjunction with Air suspension, Air suspension with rear axle steering or 'Professional' Chassis pack.

SCR (Selective Catalytic Reduction) requires AdBlue®, [please click here](#) or visit [www.volkswagen.co.uk/technology/adblue](http://www.volkswagen.co.uk/technology/adblue) for more details.

VAT IS CALCULATED AT 20%. EFFECTIVE FROM 1 APRIL 2021.

# CO<sub>2</sub> emissions, BIK % and VED Bands with optional wheels.

## Effect of wheel size on CO<sub>2</sub> emissions, BIK % and VED Bands.

Choosing alternative alloy wheels than standard, as an option, may result in different fuel consumption as well as different CO<sub>2</sub> emissions and subsequently an alternative Vehicle Excise Duty (VED) Band, while BIK rates paid by company car drivers may differ. This is due to the fact that different wheels have both alternative aerodynamic drag and mechanical drag, resulting in different rolling resistance and wind resistance. As a result, the VED Band that the vehicle falls into may differ from its original VED Band when fitted with standard size wheels. In some instances, the recommended 'On the road' retail price paid for the vehicle may change as a result of the change in VED rate. The chart below shows CO<sub>2</sub> emissions and the related VED Bands for vehicles with both standard-fit wheels and larger optional alloy wheels, as well as the different cost payable due to a change in VED Band if applicable.

5-DOOR 4X4 RANGE.		RDE2 Compliant	Output, PS	Standard wheel size	CO <sub>2</sub> emission, g/km <sup>1</sup> , WLTP test cycle, standard wheels	First year VED £, standard wheels	BIK % with standard wheel size <sup>2</sup>	Optional alloy wheel and size	CO <sub>2</sub> emission, g/km <sup>1</sup> , WLTP test cycle, optional alloy wheels	First year VED £, optional wheels	BIK % with optional wheel size <sup>2</sup>
<b>R-LINE</b> ‡	3.0 ltr V6 TSI 4MOTION ‡	Yes	340	19"	251	1,910.00	37	21" Suzuka Dark Graphite diamond-turned	251†	1,910.00	37
	3.0 ltr V6 TDI SCR 4MOTION ‡	Yes	231	20"	216	1,345.00	37	21" Suzuka Dark Graphite diamond-turned	217†	1,345.00	37
	3.0 ltr V6 TDI SCR 4MOTION ‡	Yes	286	20"	216	1,345.00	37	21" Suzuka Dark Graphite diamond-turned	217†	1,345.00	37
<b>R-LINE TECH</b> ‡	3.0 ltr V6 TSI 4MOTION ‡	Yes	340	19"	252	1,910.00	37	20" Braga Dark Graphite diamond-turned	252	1,910.00	37
				19"	252	1,910.00	37	21" Suzuka Dark Graphite diamond-turned	252†	1,910.00	37
	3.0 ltr V6 TDI SCR 4MOTION ‡	Yes	231	20"	217	1,345.00	37	20" Braga Dark Graphite diamond-turned	217	1,345.00	37
				20"	217	1,345.00	37	21" Suzuka Dark Graphite diamond-turned	218†	1,345.00	37
	3.0 ltr V6 TDI SCR 4MOTION ‡	Yes	286	20"	217	1,345.00	37	20" Braga Dark Graphite diamond-turned	217	1,345.00	37
				20"	217	1,345.00	37	21" Suzuka Dark Graphite diamond-turned	218†	1,345.00	37
<b>BLACK EDITION</b> ‡	3.0 ltr V6 TSI 4MOTION ‡	Yes	340	19"	254	1,910.00	37	21" Suzuka Dark Graphite diamond-turned	254	1,910.00	37
	3.0 ltr V6 TDI SCR 4MOTION ‡	Yes	231	20"	219	1,345.00	37	21" Suzuka Dark Graphite diamond-turned	219	1,345.00	37
	3.0 ltr V6 TDI SCR 4MOTION ‡	Yes	286	20"	219	1,345.00	37	21" Suzuka Dark Graphite diamond-turned	219	1,345.00	37
<b>R</b> ‡	3.0 ltr V6 TSI eHybrid 4MOTION ‡	Yes	462	22"	67	15.00	17	22" Estoril Gloss Black	67	15.00	17

1 Figures for the Volkswagen Touareg, including petrol, diesel and hybrid vehicles. Plug-in hybrid vehicles require mains electricity for charging. Figures for hybrid vehicles were obtained using a combination of battery power and fuel. Figures shown are for comparability purposes; only compare fuel consumption, CO<sub>2</sub> and electric range figures with other vehicles tested to the same technical procedures. These figures may not reflect real life driving results, which will depend upon a number of factors including the accessories fitted (post-registration), variations in weather, driving styles and vehicle load. Data correct at 11.3.2021. Figures quoted are for a range of configurations (including non-UK) and are subject to change due to ongoing approvals/changes. For more information, please see [www.volkswagen.co.uk/need-help/wltp](http://www.volkswagen.co.uk/need-help/wltp) or consult your authorised Volkswagen retailer.

2 The BIK charges quoted reflect the charges which apply to vehicles registered after 6 April 2021. These charges may differ from any charges displayed or quoted before 6 April 2021. The BIK % figure quoted includes the 4% diesel supplement, where applicable. Please note: the increase in VED and BIK rate that is payable is in addition to the cost of the optional alloy wheels. Please consult your Volkswagen retailer for full details.

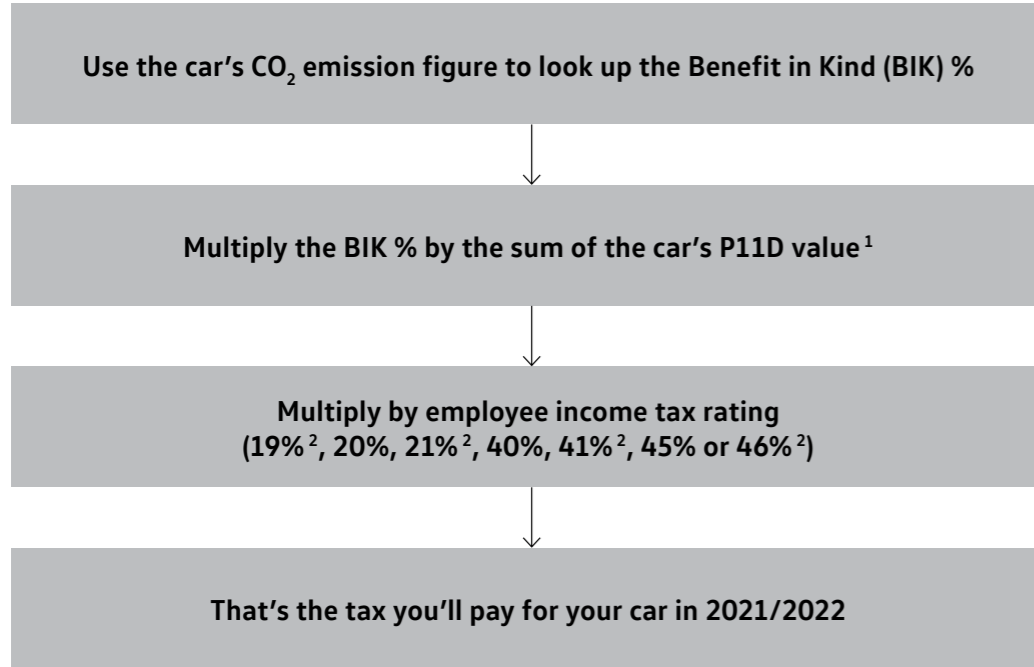
‡ These vehicles are WLTP (Worldwide Harmonised Light-Duty Vehicles Test Procedure) type approved vehicles. More information is available at [www.volkswagen.co.uk/need-help/wltp](http://www.volkswagen.co.uk/need-help/wltp).

† Figures shown are Suzuka Dark Graphite diamond-turned alloy wheels in conjunction with Air suspension, Air suspension with rear axle steering or 'Professional' Chassis pack. SCR (Selective Catalytic Reduction) requires AdBlue®, [please click here](#) or visit [www.volkswagen.co.uk/technology/adblue](http://www.volkswagen.co.uk/technology/adblue) for more details.

VAT IS CALCULATED AT 20%. EFFECTIVE FROM 1 APRIL 2021.

# Company car taxation chart – tax year 2021/22.

## How to calculate your company car income tax liability – effective 6.4.2021



The government is retaining the diesel supplement in company car tax until 2021, when EU-wide testing procedures will ensure new diesel cars meet air quality standards even under strict 'real world' driving conditions. In the 2017 Autumn Budget the Chancellor announced that there will be a new VED supplement on new diesel cars first registered from 1 April 2018 adding 4% to their appropriate percentage if the car is propelled solely by diesel (up to a maximum of 37%), so that their First-Year Rate will be calculated as if they were in the VED band above. However, this will not apply on those diesel cars which meet Real Driving Emissions Step 2 (RDE2) standards.

For further details of company car tax, please consult your authorised Volkswagen retailer, or visit [www.volkswagen.co.uk/offers-and-finance/fleet/calculators/company-car-tax-calculator](http://www.volkswagen.co.uk/offers-and-finance/fleet/calculators/company-car-tax-calculator). Full details can be found at [www.assets.publishing.service.gov.uk/government/uploads/system/uploads/attachment\\_data/file/815268/190617\\_-\\_WLTP\\_-\\_summary\\_of\\_responses\\_v2.2.pdf](http://www.assets.publishing.service.gov.uk/government/uploads/system/uploads/attachment_data/file/815268/190617_-_WLTP_-_summary_of_responses_v2.2.pdf)

<sup>1</sup> P11D values given in this price list are based on standard specification models with no factory-fitted options or other accessories. If your car includes factory-fitted options or other accessories, you may need to adjust the P11D value to take this into account.

<sup>2</sup> From 6 April 2018, new income tax rates have been introduced for Scottish Taxpayers, these figures reflect the new Scottish rates. For full details of Scottish BIK tax liability, please refer to the [Benefit In Kind for Scottish Residents section](#)

Emissions CO <sub>2</sub> (g/km)	2021/22 Benefit in Kind % (BIK)				2022/23 and 2023/24 Benefit in Kind % (BIK)			
	Petrol and Diesel RDE2	Diesel RDE	Electric range, miles	Alternative fuel	Petrol and Diesel RDE2	Diesel RDE	Electric range miles	Alternative fuel
0 (BEV)								
1-50	13%	17%	130 or above	1%	14%	18%	130 or above	2%
1-50	13%	17%	70-129	4%	14%	18%	70-129	5%
1-50	13%	17%	40-69	7%	14%	18%	40-69	8%
1-50	13%	17%	30-39	11%	14%	18%	30-39	12%
1-50	13%	17%	1-29	13%	14%	18%	1-29	14%
51-54	14%	18%		14%	15%	19%		15%
55-59	15%	19%		15%	16%	20%		16%
60-64	16%	20%		16%	17%	21%		17%
65-69	17%	21%		17%	18%	22%		18%
70-74	18%	22%		18%	19%	23%		19%
75-79	19%	23%		19%	20%	24%		20%
80-84	20%	24%		20%	21%	25%		21%
85-89	21%	25%		21%	22%	26%		22%
90-94	22%	26%		22%	23%	27%		23%
95-99	23%	27%		23%	24%	28%		24%
100-104	24%	28%		24%	25%	29%		25%
105-109	25%	29%		25%	26%	30%		26%
110-114	26%	30%		26%	27%	31%		27%
115-119	27%	31%		27%	28%	32%		28%
120-124	28%	32%		28%	29%	33%		29%
125-129	29%	33%		29%	30%	34%		30%
130-134	30%	34%		30%	31%	35%		31%
135-139	31%	35%		31%	32%	36%		32%
140-144	32%	36%		32%	33%	37%		33%
145-149	33%	37%		33%	34%	37%		34%
150-154	34%	37%		34%	35%	37%		35%
155-159	35%	37%		35%	36%	37%		36%
160-164	36%	37%		36%	37%	37%		37%
165-169	37%	37%		37%	37%	37%		37%
170+	37%	37%		37%	37%	37%		37%

Taxable percentage of P11D value (Diesel RDE figures include the 4% diesel supplement)

# Company car taxation comparison.

## 3-year taxation comparison guide.

TOUAREG		RDE2 Compliant	Output, PS	CO <sub>2</sub> emission, g/km <sup>1</sup> WLTP test cycle	Basic Recommended Retail £	VAT £	Total Recommended Retail £	Tax year commencing	P11D Value £ <sup>2</sup>	BIK % <sup>3</sup>	Annual cost at 40% <sup>4</sup> tax rate £	
SEL ‡	3.0 ltr V6 TSI 4MOTION ‡	8-spd auto tiptronic	Yes	340	249	43,912.50	8,782.50	52,695.00	2021/22	53,330.00	37	7,892.84
									2022/23	53,330.00	37	7,892.84
									2023/24	53,330.00	37	7,892.84
R-LINE TECH ‡	3.0 ltr V6 TDI SCR 4MOTION ‡	8-spd auto tiptronic	Yes	286	217	48,637.50	9,727.50	58,365.00	2021/22	59,000.00	37	8,732.00
									2022/23	59,000.00	37	8,732.00
									2023/24	59,000.00	37	8,732.00
R ‡	3.0 ltr V6 TDI SCR 4MOTION ‡	8-spd auto tiptronic	Yes	462	67	59,408.33	11,881.67	71,290.00	2021/22	71,925.00	17	4,890.90
									2022/23	71,925.00	18	5,178.60
									2023/24	71,925.00	18	5,178.60

1 Figures for the Volkswagen Touareg range, including petrol, diesel and hybrid vehicles. Plug-in hybrid vehicles require mains electricity for charging. Figures for hybrid vehicles were obtained using a combination of battery power and fuel. Figures shown are for comparability purposes; only compare fuel consumption, CO<sub>2</sub> and electric range figures with other vehicles tested to the same technical procedures. These figures may not reflect real life driving results, which will depend upon a number of factors including the accessories fitted (post-registration), variations in weather, driving styles and vehicle load. Data correct at 11.3.2021. Figures quoted are for a range of configurations (including non-UK) and are subject to change due to ongoing approvals/changes. For more information, please see [www.volkswagen.co.uk/need-help/wltp](http://www.volkswagen.co.uk/need-help/wltp) or consult your authorised Volkswagen retailer.

2 P11D value = Total recommended retail price + delivery to retailer £509.17, + number plates £20, + VAT £105.83 (calculated by reference to total of delivery to retailer + number plates). P11D value is based on standard specification model with no factory-fitted options or other accessories.

3 The BIK charges quoted reflect the charges which apply to vehicles registered after 6 April 2021. These charges may differ from any charges displayed or quoted before 6 April 2021. The BIK % figure quoted includes the 4% diesel supplement, where applicable. Please consult your Volkswagen retailer for full details.

4 From 6 April 2018, new income tax rates have been introduced for Scottish Taxpayers. For full details of Scottish BIK tax liability, please refer to the [Benefit In Kind for Scottish Residents section](#)

‡ These vehicles are WLTP (Worldwide Harmonised Light-Duty Vehicles Test Procedure) type approved vehicles. More information is available at [www.volkswagen.co.uk/need-help/wltp](http://www.volkswagen.co.uk/need-help/wltp).

All examples are for manual derivatives unless otherwise stated.

RDE2 refers to Real Driving Emissions Step 2.

Volkswagen UK may change RRP's at any time (this includes where there are government changes in regulation and/or legislation). There may be a delay to any RRP displaying correctly on our materials. Always obtain prices from your chosen authorised Volkswagen retailer.

VAT IS CALCULATED AT 20%. EFFECTIVE FROM 1 APRIL 2021.



# Volkswagen service.



Configure now >



## VOLKSWAGEN FINANCE<sup>1</sup>

Volkswagen Finance specialises in providing funding solutions for Volkswagen drivers. Whether your Volkswagen is for private or business use, you can choose from a range of funding options.

### Solutions – a Personal Contract Plan

Flexible finance plan designed to allow you to drive a new vehicle sooner than you think. At the end of your agreement you can choose to trade in your Volkswagen for a new one, keep it, or hand it back.

### Hire Purchase

A simple and straightforward way to finance your Volkswagen. Have the option to break down your monthly payments over a period that suits you, making financing your car much more manageable than you think.

### Contract Hire

Available for both personal and business customers. Ideal for customers simply wanting to pay a monthly rental for the vehicle, change it on a regular fixed period and have no disposal risk.

- Lease Purchase
- Finance Lease

With all Volkswagen Finance products you can choose a fixed-cost maintenance plan to help you budget for your servicing and maintenance costs. Buy your service plan online or visit your local Volkswagen retailer for more information.



## VOLKSWAGEN INSURANCE<sup>2</sup>

We want you to start enjoying your new car from day one, and thanks to our complimentary five day Volkswagen Drive Away Insurance you can. Please visit [www.insurewithvolkswagen.co.uk/driveaway](http://www.insurewithvolkswagen.co.uk/driveaway) to activate your cover. If eligible, we will also give you a quotation for our annual insurance, designed specifically for Volkswagen drivers.

## ANNUAL CAR INSURANCE

Volkswagen car insurance helps give you peace of mind with the following benefits at no extra cost:

- Repairs carried out by Volkswagen trained technicians using Volkswagen Genuine Parts and paints when repaired by a Volkswagen approved repairer
- Guaranteed courtesy car
- Child seat replacement
- Uninsured driver promise
- Vandalism promise
- 24 hour accident recovery

For more information or to get a quote, visit [www.insurewithvolkswagen.co.uk](http://www.insurewithvolkswagen.co.uk)

## SERVICING AND MAINTENANCE

Volkswagen is pleased to offer you a choice on how your Volkswagen is serviced. The appropriate selection is entirely dependent on how the car is likely to be driven and its general use. To help you identify which type of service would be most suitable, please refer to the following guide.

### Fixed Service

The Fixed Service is recommended for vehicles that will cover less than 9,300 miles in 12 months and if the vehicle is likely to be used in the following way:

- Predominantly urban driving, short journeys with frequent cold starts.
- Activities regularly producing high engine loading, e.g. frequent hill climbs, driving with vehicle fully loaded and towing.
- Uneconomical driving style using high rpms with heavy acceleration and heavy braking.

The service intervals for the Fixed Service schedule on 2021 MY onwards are as follows:

- Oil change service – After 1 year or 9,300 miles (15,000 km), whichever is soonest.
- Inspection service<sup>3</sup> – First after 2 years or 18,600 miles (30,000 km), then every 2 years or 18,600 miles (30,000 km), whichever is soonest.



## SERVICING AND MAINTENANCE (CONTINUED)

### Flexible Service

The Flexible Service is recommended for vehicles with daily mileage of more than 25 miles where the vehicle is driven regularly mainly on longer distance journeys. The vehicle is driven mainly at a constant speed with minimum vehicle and engine loading, minimal towing and driven in an economical manner. With the Flexible Service the vehicle can drive up to 18,600 miles<sup>4</sup> (30,000 km) or 2 years, whichever is soonest, between oil changes.

The service intervals for the Flexible Service schedule on 2021 MY onwards are as follows:

- Oil change service – According to flexible service interval display, 2 years or 18,600 miles (30,000 km), whichever is soonest.
- Inspection service<sup>3</sup> – First after 2 years or 18,600 miles (30,000 km), then every 2 years or 18,600 miles (30,000 km), whichever is soonest.

The up! model is only available with the Fixed Service schedule. Flexible Servicing is not available on BEV, PHEV or GTE models. Please consult your authorised Volkswagen retailer or repairer for advice and full details.

Please note: If you purchase a Volkswagen Fixed Price Service Plan your vehicle will follow the Fixed Service schedule.

## VOLKSWAGEN ENSURANCE<sup>5</sup>

Get three years' Volkswagen Insurance cover for free.

Another great benefit of being a Volkswagen driver. If your Volkswagen was damaged in an accident, wouldn't you want it fixed by a Volkswagen trained technician using only Genuine Volkswagen Parts? Insurance is Volkswagen's accident and repair cover which does exactly that. It works alongside your main comprehensive motor insurance policy no matter who you are insured with, to make sure you get the quality repair and service you would want. If you're involved in an accident or your car is stolen, just one call to us and we'll look after your claim from start to finish, ensuring your Volkswagen is restored to the highest standard.

Activate your cover and benefit from:

- A guarantee that your Volkswagen will be repaired by a Volkswagen approved repairer and Volkswagen trained technicians, using only Genuine Volkswagen Parts and paints.
- A dedicated Claims Manager who will manage your claim from start to finish, liaising with your insurer and the repairer so you don't have to.
- Help to recover any uninsured losses using our Legal Expenses Cover.
- Online claims tracking so you can keep up to date with the status of any claim.

Volkswagen Insurance is free to all Volkswagen customers for three years and it only takes a minute to get cover.

To find out more and to activate your cover, visit [www.insurewithvolkswagen.co.uk/insurance](http://www.insurewithvolkswagen.co.uk/insurance)

- 1 Finance is available to 18s and over, subject to status. Terms and conditions apply. Volkswagen Finance.
- 2 Volkswagen Car Insurance is underwritten by U K Insurance Limited. Registered Office: The Wharf, Neville Street, Leeds LS1 4AZ. Registered in England and Wales number: 1179980. U K Insurance Limited is authorised by the Prudential Regulation Authority and regulated by the Financial Conduct Authority (FCA) and the Prudential Regulation Authority. Calls may be recorded. Volkswagen Financial Services (UK) Limited ('VWFS UK'), registered in England and Wales number: 2835230 (Registered Office: Brunswick Court, Yeomans Drive, Blakelands, Milton Keynes MK14 5LR). Volkswagen Insurance Service (Great Britain) Ltd. is an appointed representative of VWFS UK. VWFS UK is authorised and regulated by the FCA, registration number: 311988. Authorisation details for both organisations can be checked on the Financial Services Register by visiting [www.fca.org.uk](http://www.fca.org.uk). VWFS UK and U K Insurance Limited are not part of the same corporate group.
- 3 The inspection service first at 2 years (or 18,600 miles) and then every second year (or 18,600 miles).
- 4 The quoted mileage is based on a conversion from kilometers and is therefore unlikely to exceed circa 18,600 miles between oil changes.
- 5 Insurance from Volkswagen Financial Services is sold and administered by Lawshield UK Limited, registered in England number: 3360532. Registered office: Lawshield House, 850 Ibis Court, Lakeside Drive, Centre Park, Warrington, Cheshire, WA1 1RL and underwritten by UK General Insurance Limited on behalf of Great Lakes Insurance SE. Great Lakes Insurance SE is a German insurance company with its headquarters at Königinstrasse 107, 80802 Munich. UK Branch office: Plantation Place, 30 Fenchurch Street, London, EC3M 3AJ. Lawshield UK Limited is authorised and regulated by the Financial Conduct Authority (FCA). Authorisation details can be checked on the FCA's register at [www.fca.org.uk](http://www.fca.org.uk). Great Lakes Insurance SE, UK Branch, is authorised by Bundesanstalt für Finanzdienstleistungsaufsicht and subject to limited regulation by the Financial Conduct Authority and Prudential Regulation Authority. Details about the extent of their regulation by the Financial Conduct Authority and Prudential Regulation Authority are available on request.

# Volkswagen service (continued).

## WARRANTY

Exclusions and terms and conditions apply to all warranties, plans and insurance listed. For pricing and further details of Volkswagen Warranties, Service Plans and Insurance, please consult your authorised Volkswagen retailer or repairer, or visit [www.volkswagen.co.uk](http://www.volkswagen.co.uk)

### THE VOLKSWAGEN WARRANTY THREE-YEAR WARRANTY

All Volkswagen passenger cars come with a three-year/60,000 miles warranty, which protects your car against the failure of most technical and electrical components due to manufacturing defects. This comprises a two-year manufacturer's warranty with unlimited mileage plus a further one-year/60,000 miles (whichever is soonest) Retailer Warranty<sup>1</sup>. Should the mileage exceed 60,000 miles within the first two years, the manufacturer's two-year warranty will still be valid. Full details of the three-year warranty are available from your authorised Volkswagen retailer or repairer.

### BODY PROTECTION WARRANTY

The internal body sections and panels are covered against rusting through from the inside for 12 years. Naturally, the vehicle must be cared for in compliance with the manufacturer's operating instructions. Please consult your authorised Volkswagen retailer or repairer for full warranty details.

### THREE-YEAR PAINTWORK WARRANTY

This latest paintwork warranty, pioneered by Volkswagen, provides you with cover on a new car. Naturally, during the warranty period the car must be cared for in compliance with the manufacturer's operating instructions. Any paintwork defects, as a result of the manufacturing process, will be rectified without charge.

### APPROVED ACCESSORIES

A comprehensive range of accessories from alloy wheels to carpet mats is available to complement the factory-fitted option list. Volkswagen approved accessories purchased from and fitted by your authorised Volkswagen retailer at the point of vehicle sale will also benefit from the three-year vehicle warranty.

## VOLKSWAGEN ROADSIDE ASSISTANCE

Every new car is registered for Volkswagen Roadside Assistance for one year except the Touareg which is registered for three years. This provides vehicle roadside and home recovery in the unlikely event of a breakdown in the UK and Europe (subject to conditions). Volkswagen Roadside Assistance can also be purchased for subsequent years.

Exclusions and terms and conditions apply. For pricing and further details of Volkswagen Roadside Assistance, please consult your authorised Volkswagen retailer, or visit [www.volkswagen.co.uk](http://www.volkswagen.co.uk)



## ADBLUE®

Diesel engines with SCR (Selective Catalytic Reduction) technology require AdBlue® which must be kept topped up. Please see [www.volkswagen.co.uk/technology/engines/adblue](http://www.volkswagen.co.uk/technology/engines/adblue) for more details.



## PRICES AND SPECIFICATIONS

The prices and specifications contained in this price list are for information purposes only as our products are continually updated and changes may be made to the prices and specifications at any time. If you require any specific feature, please consult your authorised Volkswagen retailer who is regularly updated with any change in specification. Prices and specifications are subject to change without notice.

Following the announcement of a price increase, any vehicle order which can be accepted into the factory production system before the effective date of the price increase will be supplied at the current price, even if built and delivered after the date on which the increase became effective.

*Note: We would like to advise you that telephone calls to Volkswagen Customer Care may be monitored and recorded as part of our training and quality assurance processes. All our monitoring and recording processes meet Ofcom regulations.*

## BENEFIT IN KIND (BIK) FOR SCOTTISH RESIDENTS

Effective as of 6 April 2018, the Scottish Government introduced their own BIK taxation structure. This is only applicable to Company Car Drivers that are resident Scottish taxpayers. HMRC will continue to be responsible for the collection and management of taxes and will determine whether or not an individual is a Scottish taxpayer based on where their primary place of residence is.

### Scottish Income Tax rates and Bands 2018/19

Starter rate 19% over £11,850 - £13,850

Basic rate of 20% over £13,850 - £24,000

Intermediate rate 21% over £24,000 - £44,273

Higher rate 41% over £44,273 - £150,000

Top rate 46% above £150,000

## FUEL CONSUMPTION AND CO<sub>2</sub> EMISSIONS

Fuel consumption and CO<sub>2</sub> figures are obtained under standardised EU test conditions (Directive 93/116/EEC). This allows a direct comparison between different manufacturer models but may not represent the actual fuel consumption achieved in 'real world' driving conditions. More information is available on the Volkswagen website at [www.volkswagen.co.uk](http://www.volkswagen.co.uk) and at [www.dft.gov.uk/vca](http://www.dft.gov.uk/vca). The weight of a vehicle will influence the level of CO<sub>2</sub> emissions it produces; as a result, vehicles with higher levels of specification and factory-fitted options may emit higher levels of CO<sub>2</sub>. Choosing larger alloy wheels than those fitted as standard may result in increased fuel consumption as well as higher CO<sub>2</sub> emissions and subsequently an increased Vehicle Excise Duty (VED) band. BIK rates paid by company car drivers may also increase. In some instances, the recommended 'On the road' retail price paid for a vehicle may increase as a result of the increased VED rate. CO<sub>2</sub> is the main greenhouse gas responsible for global warming. The specifications contained in this brochure are for information purposes only and are subject to change.



<sup>1</sup> All warranty work must be completed by an authorised Volkswagen retailer or repairer.

# Volkswagen service plan.

An additional way to keep your perfect car, perfect for longer.

Exclusions and terms apply, [please click here](#) for more details. For pricing and further details of the Volkswagen Service Plan, please consult your authorised Volkswagen retailer or visit [www.volkswagen.co.uk](http://www.volkswagen.co.uk)

## Volkswagen Service Plan – retail sales only

We offer Volkswagen Service Plans to cover all new models for their first two consecutive services in line with the Fixed Service schedule required on the vehicle. Your car will be in the hands of Volkswagen trained technicians who use specialist Volkswagen tools, technology and Volkswagen original parts, and all parts and labour are guaranteed for two years. What's more, the Volkswagen Service Plan will remain with the vehicle should you decide to sell your car.

## Volkswagen Service Plan – retail sales only For vehicles under 1 year old set to the Fixed Service regime that has not had its first service, comprising first two manufacturer's scheduled services:

- 'Oil service' including oil filter change
- 'Oil service' including oil filter change and 'Inspection service' plus a pollen filter replacement (if required)

Excludes electric vehicles. Service plan covers first two consecutive services, limited to 1x 'Oil service' and 1x 'Oil and Inspection service'. T&Cs apply: All vehicles must be set to the Fixed Service regime by the retailer. Maximum age of car is 12 months (Service plan must be taken out before first service is due). Additional work, including wear and tear is excluded. Servicing must be carried out in line with the requirement of the Service Schedule. All work must be carried out by an Authorised Volkswagen Repairer. Offers may be varied or withdrawn at any time. Plan validity is dependent on required payments received. Administered by Volkswagen Financial Services. Retail sales only. For pricing and further details, please consult your authorised Volkswagen retailer or visit [www.volkswagen.co.uk](http://www.volkswagen.co.uk)



Interior shown is Touareg SEL with optional coloured ambient lighting pack, 'Savona' leather front ergoComfort seats with 14-way adjustment, memory pack, Active front climate seats, Innovision Cockpit, 'Dynaudio Confidence' premium soundpack, keyless entry/keyless start and metallic paint.



Model shown is Touareg SEL with optional 21" 'Suzuka' Dark Graphite diamond-turned alloy wheels, panoramic sunroof, air suspension, 'IQ. Light' LED matrix headlights with headlight washers and metallic paint.

# The Touareg

Issued by Volkswagen Marketing, Volkswagen (UK)  
© Volkswagen Group United Kingdom Limited 2021  
Issue: 1 April 2021

Volkswagen Information Service  
Telephone: 0800 333 666  
Internet: [www.volkswagen.co.uk](http://www.volkswagen.co.uk)

Volkswagen Fleet Business Centre  
Telephone: 0800 0093 397  
Internet: [www.volkswagen.co.uk/fleet](http://www.volkswagen.co.uk/fleet)

This brochure can be viewed or downloaded in pdf format at:  
[www.volkswagen.co.uk](http://www.volkswagen.co.uk)

*Prices, specifications, features, technical and other information (including fuel consumption, CO<sub>2</sub> emissions and range) are updated regularly and are subject to change without notice (this may include changes between order and delivery). There may be a delay in updates to our materials – always consult your authorised Volkswagen retailer for the latest information.*



[facebook.com/VolkswagenUK](https://facebook.com/VolkswagenUK)



[@UKVolkswagen](https://twitter.com/@UKVolkswagen)



[youtube.com/user/ukvolkswagen](https://youtube.com/user/ukvolkswagen)



[volkswagen\\_uk](https://volkswagen_uk)