

The T-Cross

Price and specification guide

Effective from 15.4.2021



As flexible as your lifestyle.

Special in every way. That's the T-Cross, with an exterior that's funky and fun, and an interior that's spacious, clever and packed with features. Built for people who want more out of life, the T-Cross gives you the freedom to be as spontaneous as you wish. Adaptable, versatile and flexible, this is a car that cannot be labelled. Just like you.



Please note, the Volkswagen roundel depicted in the interior and exterior images featured in this publication does not represent the new Volkswagen brand identity so, therefore, will appear different.

Model shown is T-Cross SEL with optional Energetic Orange Design pack and metallic paint. Front cover model shown is T-Cross R-Line with optional metallic paint.

[Configure now >](#)



Choose to be different.

Who wants to follow routine? Jump inside the T-Cross and leave convention behind.

A host of design options, inside and out, allows you to create a car that's as individual as you are, opening up a world of possibilities. Life's all about being yourself. Choose to be different.

Follow your dream.



Model shown is T-Cross R-Line with optional metallic signature paint.

The T-Cross	Model prices	Standard equipment	Driver's assistance systems	Factory-fitted options	Design packs	Accessories	Alloy wheels	Paint	Upholstery and decorative inserts	Combinations	Dimensions	VED and additional 'On the road' costs	Environmental information	CO₂ emissions, BIK % and VED Bands with optional wheels	Company car taxation chart and comparison	Volkswagen service and service plan
-----------------------------	------------------------------	------------------------------------	---	--	------------------------------	-----------------------------	------------------------------	-----------------------	---	------------------------------	----------------------------	--	---	--	---	---

Model prices.

5-DOOR RANGE.		RDE2 Compliant	Fuel	Transmission	Output, PS	CO ₂ emission, g/km ¹ WLTP test cycle	Basic Recommended Retail £	VAT £	Total Recommended Retail £	Additional 'On the road' Costs £ ²	Manufacturer's Recommended 'On the road' Retail £ ²	P11D Value £ ³	BIK % ⁴	ABI Insurance Group ⁵
S [‡]	1.0 ltr TSI [‡]	Yes	Petrol	5-door	5-spd manual	95	14,787.50	2,957.50	17,745.00	910.00	18,655.00	18,380.00	30	8E
SE [‡]	1.0 ltr TSI [‡]	Yes	Petrol	5-door	5-spd manual	95	16,354.17	3,270.83	19,625.00	910.00	20,535.00	20,260.00	30	8E
	1.0 ltr TSI [‡]	Yes	Petrol	5-door	6-spd manual	110	16,991.67	3,398.33	20,390.00	910.00	21,300.00	21,025.00	30	11E
	1.0 ltr TSI [‡]	Yes	Petrol	5-door	7-spd auto DSG	110	18,241.67	3,648.33	21,890.00	910.00	22,800.00	22,525.00	33	10E
	1.0 ltr TSI ^{††}	No	Petrol	5-door	6-spd manual	115	16,712.50	3,342.50	20,055.00	910.00	20,965.00	20,690.00	31	10E
	1.0 ltr TSI ^{††}	No	Petrol	5-door	7-spd auto DSG	115	17,962.50	3,592.50	21,555.00	910.00	22,465.00	22,190.00	32	10E
	1.6 ltr TDI [‡]	No	Diesel	5-door	5-spd manual	95	18,200.00	3,640.00	21,840.00	1,245.00	23,085.00	22,475.00	35	8E
UNITED ^{††}	1.0 ltr TSI [‡]	Yes	Petrol	5-door	5-spd manual	95	16,254.17	3,250.83	19,505.00	910.00	20,415.00	20,140.00	30	8E
	1.0 ltr TSI [‡]	Yes	Petrol	5-door	6-spd manual	110	16,879.17	3,375.83	20,255.00	910.00	21,165.00	20,890.00	30	11E
	1.0 ltr TSI [‡]	Yes	Petrol	5-door	7-spd auto DSG	110	18,129.17	3,625.83	21,755.00	910.00	22,665.00	22,390.00	33	11E

1 Figures shown are for comparability purposes; only compare fuel consumption and CO₂ figures with other vehicles tested to the same technical procedures. These figures may not reflect real life driving results, which will depend upon a number of factors including the accessories fitted (post-registration), variations in weather, driving styles and vehicle load. Data correct at 15.4.2021. For more information, please see www.volkswagen.co.uk/need-help/wltp or consult your authorised Volkswagen retailer. 2 The recommended 'On the road' prices and any VED charges quoted reflect the VED charges which apply to vehicles registered after 1 April 2021. The price and charges you pay may differ from any prices or charges displayed or quoted before 1 April 2021. For full details of 'First year rate' VED (Vehicle Excise Duty), delivery to retailer, number plates and vehicle first registration fee included in the recommended 'On the road' retail price, [please click here](#) 3 P11D value = Total recommended retail price + delivery to retailer £509.17, + number plates £20, + VAT £105.83 (calculated by reference to total of delivery to retailer + number plates). P11D value is based on standard specification model with no factory-fitted options or other accessories. 4 The BIK charges quoted reflect the charges which apply to vehicles registered after 6 April 2021. These charges may differ from any charges displayed or quoted before 6 April 2021. The BIK % figure quoted includes the 4% diesel supplement, where applicable. Please consult your Volkswagen retailer for full details. 5 The ABI insurance group is the recommended insurance rating set by the Association of British Insurers. Please note that insurance group ratings are purely advisory. They are used by insurers (ABI members and Lloyd's syndicates) as one of the factors in calculating premiums. Insurers are not required to follow the advisory group ratings and they may depart from them if they so wish.

‡ These vehicles are WLTP (Worldwide Harmonised Light-Duty Vehicles Test Procedure) type approved vehicles. More information is available at www.volkswagen.co.uk/need-help/wltp.

† Please note these models are only available from stock and not available to factory order.

RDE2 refers to Real Driving Emissions Step 2.

Volkswagen Service Plan – Retail sales only.

For vehicles under 1 year old set to the Fixed Service regime that has not had its first service, comprising first two manufacturer's scheduled services:

- 'Oil service' including oil filter change
- 'Oil service' including oil filter change and 'Inspection service' plus a pollen filter replacement (if required)

Excludes electric vehicles. Service plan covers first two consecutive services, limited to 1x 'Oil service' and 1x 'Oil and Inspection service'. T&Cs apply: All vehicles must be set to the Fixed Service regime by the retailer. Maximum age of car is 12 months (Service plan must be taken out before first service is due). Additional work, including wear and tear is excluded. Servicing must be carried out in line with the requirement of the Service Schedule. All work must be carried out by an Authorised Volkswagen Repairer. Offers may be varied or withdrawn at any time. Plan validity is dependent on required payments received. Administered by Volkswagen Financial Services. Retail sales only. For pricing and further details, please consult your authorised Volkswagen retailer or visit www.volkswagen.co.uk

Prices, specifications, features, technical and other information (including fuel consumption, CO₂ emissions and range) are updated regularly and are subject to change without notice (this may include changes between order and delivery). There may be a delay in updates to our materials – always consult your authorised Volkswagen retailer for the latest information.

Volkswagen UK may change RRP's at any time (this includes where there are government changes in regulation and/or legislation).

There may be a delay to any RRP displaying correctly on our materials. Always obtain prices from your chosen authorised Volkswagen retailer.

VAT IS CALCULATED AT 20%. EFFECTIVE FROM 15 APRIL 2021.

Model prices.

5-DOOR RANGE.		RDE2 Compliant	Fuel	Transmission	Output, PS	CO ₂ emission, g/km ¹ WLTP test cycle	Basic Recommended Retail £	VAT £	Total Recommended Retail £	Additional 'On the road' Costs £ ²	Manufacturer's Recommended 'On the road' Retail £ ²	P11D Value £ ³	BIK % ⁴	ABI Insurance Group ⁵
ACTIVE [‡]	1.0 ltr TSI [‡]	Yes	Petrol	5-door	5-spd manual	95	16,770.83	3,354.17	20,125.00	910.00	21,035.00	20,760.00	30	8E
	1.0 ltr TSI [‡]	Yes	Petrol	5-door	6-spd manual	110	17,408.33	3,481.67	20,890.00	910.00	21,800.00	21,525.00	30	10E
	1.0 ltr TSI [‡]	Yes	Petrol	5-door	7-spd auto DSG	110	18,658.33	3,731.67	22,390.00	910.00	23,300.00	23,025.00	33	10E
BLACK EDITION [‡]	1.0 ltr TSI [‡]	Yes	Petrol	5-door	5-spd manual	95	16,770.83	3,354.17	20,125.00	910.00	21,035.00	20,760.00	30	9E
	1.0 ltr TSI [‡]	Yes	Petrol	5-door	6-spd manual	110	17,408.33	3,481.67	20,890.00	910.00	21,800.00	21,525.00	30	11E
	1.0 ltr TSI [‡]	Yes	Petrol	5-door	7-spd auto DSG	110	18,658.33	3,731.67	22,390.00	910.00	23,300.00	23,025.00	33	11E
SEL [‡]	1.0 ltr TSI [‡]	Yes	Petrol	5-door	6-spd manual	110	18,779.17	3,755.83	22,535.00	910.00	23,445.00	23,170.00	30	12E
	1.0 ltr TSI [‡]	Yes	Petrol	5-door	7-spd auto DSG	110	20,029.17	4,005.83	24,035.00	910.00	24,945.00	24,670.00	33	12E
	1.0 ltr TSI ^{††}	No	Petrol	5-door	6-spd manual	115	18,470.83	3,694.17	22,165.00	910.00	23,075.00	22,800.00	31	12E
	1.0 ltr TSI ^{††}	No	Petrol	5-door	7-spd auto DSG	115	19,720.83	3,944.17	23,665.00	910.00	24,575.00	24,300.00	32	12E
	1.5 ltr TSI EVO [‡]	Yes	Petrol	5-door	7-spd auto DSG	150	21,158.33	4,231.67	25,390.00	910.00	26,300.00	26,025.00	31	16E

1 Figures shown are for comparability purposes; only compare fuel consumption and CO₂ figures with other vehicles tested to the same technical procedures. These figures may not reflect real life driving results, which will depend upon a number of factors including the accessories fitted (post-registration), variations in weather, driving styles and vehicle load. Data correct at 15.4.2021. For more information, please see www.volkswagen.co.uk/need-help/wltp or consult your authorised Volkswagen retailer. 2 The recommended 'On the road' prices and any VED charges quoted reflect the VED charges which apply to vehicles registered after 1 April 2021. The price and charges you pay may differ from any prices or charges displayed or quoted before 1 April 2021. For full details of 'First year rate' VED (Vehicle Excise Duty), delivery to retailer, number plates and vehicle first registration fee included in the recommended 'On the road' retail price, [please click here](#). 3 P11D value = Total recommended retail price + delivery to retailer £509.17, + number plates £20, + VAT £105.83 (calculated by reference to total of delivery to retailer + number plates). P11D value is based on standard specification model with no factory-fitted options or other accessories. 4 The BIK charges quoted reflect the charges which apply to vehicles registered after 6 April 2021. These charges may differ from any charges displayed or quoted before 6 April 2021. The BIK % figure quoted includes the 4% diesel supplement, where applicable. Please consult your Volkswagen retailer for full details. 5 The ABI insurance group is the recommended insurance rating set by the Association of British Insurers. Please note that insurance group ratings are purely advisory. They are used by insurers (ABI members and Lloyd's syndicates) as one of the factors in calculating premiums. Insurers are not required to follow the advisory group ratings and they may depart from them if they so wish.

‡ These vehicles are WLTP (Worldwide Harmonised Light-Duty Vehicles Test Procedure) type approved vehicles. More information is available at www.volkswagen.co.uk/need-help/wltp.

† Please note these models are only available from stock and not available to factory order.

RDE2 refers to Real Driving Emissions Step 2.

Volkswagen Service Plan – Retail sales only.

For vehicles under 1 year old set to the Fixed Service regime that has not had its first service, comprising first two manufacturer's scheduled services:

- 'Oil service' including oil filter change
- 'Oil service' including oil filter change and 'Inspection service' plus a pollen filter replacement (if required)

Excludes electric vehicles. Service plan covers first two consecutive services, limited to 1x 'Oil service' and 1x 'Oil and Inspection service'. T&Cs apply: All vehicles must be set to the Fixed Service regime by the retailer. Maximum age of car is 12 months (Service plan must be taken out before first service is due). Additional work, including wear and tear is excluded. Servicing must be carried out in line with the requirement of the Service Schedule. All work must be carried out by an Authorised Volkswagen Repairer. Offers may be varied or withdrawn at any time. Plan validity is dependent on required payments received. Administered by Volkswagen Financial Services. Retail sales only. For pricing and further details, please consult your authorised Volkswagen retailer or visit www.volkswagen.co.uk

Prices, specifications, features, technical and other information (including fuel consumption, CO₂ emissions and range) are updated regularly and are subject to change without notice (this may include changes between order and delivery). There may be a delay in updates to our materials – always consult your authorised Volkswagen retailer for the latest information.

Volkswagen UK may change RRP's at any time (this includes where there are government changes in regulation and/or legislation).

There may be a delay to any RRP displaying correctly on our materials. Always obtain prices from your chosen authorised Volkswagen retailer.

VAT IS CALCULATED AT 20%. EFFECTIVE FROM 15 APRIL 2021.

Configure now >



Model prices.

5-DOOR RANGE.		RDE2 Compliant	Fuel	Transmission	Output, PS	CO ₂ emission, g/km ¹ WLTP test cycle	Basic Recommended Retail £	VAT £	Total Recommended Retail £	Additional 'On the road' Costs £ ²	Manufacturer's Recommended 'On the road' Retail £ ²	P11D Value £ ³	BIK % ⁴	ABI Insurance Group ⁵
R-LINE ‡	1.0 ltr TSI ‡	Yes	Petrol	5-door	6-spd manual	110	20,316.67	4,063.33	24,380.00	910.00	25,290.00	25,015.00	31	13E
	1.0 ltr TSI ‡	Yes	Petrol	5-door	7-spd auto DSG	110	21,566.67	4,313.33	25,880.00	910.00	26,790.00	26,515.00	33	12E
	1.0 ltr TSI ‡†	No	Petrol	5-door	6-spd manual	115	20,054.17	4,010.83	24,065.00	910.00	24,975.00	24,700.00	32	13E
	1.0 ltr TSI ‡†	No	Petrol	5-door	7-spd auto DSG	115	21,304.17	4,260.83	25,565.00	910.00	26,475.00	26,200.00	33	13E
	1.5 ltr TSI EVO ‡	Yes	Petrol	5-door	7-spd auto DSG	150	22,695.83	4,539.17	27,235.00	910.00	28,145.00	27,870.00	31	17E

¹ Figures shown are for comparability purposes; only compare fuel consumption and CO₂ figures with other vehicles tested to the same technical procedures. These figures may not reflect real life driving results, which will depend upon a number of factors including the accessories fitted (post-registration), variations in weather, driving styles and vehicle load. Data correct at 15.4.2021. For more information, please see www.volkswagen.co.uk/need-help/wltp or consult your authorised Volkswagen retailer. ² The recommended 'On the road' prices and any VED charges quoted reflect the VED charges which apply to vehicles registered after 1 April 2021. The price and charges you pay may differ from any prices or charges displayed or quoted before 1 April 2021. For full details of 'First year rate' VED (Vehicle Excise Duty), delivery to retailer, number plates and vehicle first registration fee included in the recommended 'On the road' retail price, [please click here](#). ³ P11D value = Total recommended retail price + delivery to retailer £509.17, + number plates £20, + VAT £105.83 (calculated by reference to total of delivery to retailer + number plates). P11D value is based on standard specification model with no factory-fitted options or other accessories. ⁴ The BIK charges quoted reflect the charges which apply to vehicles registered after 6 April 2021. These charges may differ from any charges displayed or quoted before 6 April 2021. The BIK % figure quoted includes the 4% diesel supplement, where applicable. Please consult your Volkswagen retailer for full details. ⁵ The ABI insurance group is the recommended insurance rating set by the Association of British Insurers. Please note that insurance group ratings are purely advisory. They are used by insurers (ABI members and Lloyd's syndicates) as one of the factors in calculating premiums. Insurers are not required to follow the advisory group ratings and they may depart from them if they so wish.

‡ These vehicles are WLTP (Worldwide Harmonised Light-Duty Vehicles Test Procedure) type approved vehicles. More information is available at www.volkswagen.co.uk/need-help/wltp.

† Please note these models are only available from stock and not available to factory order.

RDE2 refers to Real Driving Emissions Step 2.

Volkswagen Service Plan – Retail sales only.

For vehicles under 1 year old set to the Fixed Service regime that has not had its first service, comprising first two manufacturer's scheduled services:

– 'Oil service' including oil filter change

– 'Oil service' including oil filter change and 'Inspection service' plus a pollen filter replacement (if required)

Excludes electric vehicles. Service plan covers first two consecutive services, limited to 1x 'Oil service' and 1x 'Oil and Inspection service'. T&Cs apply: All vehicles must be set to the Fixed Service regime by the retailer. Maximum age of car is 12 months (Service plan must be taken out before first service is due). Additional work, including wear and tear is excluded. Servicing must be carried out in line with the requirement of the Service Schedule. All work must be carried out by an Authorised Volkswagen Repairer. Offers may be varied or withdrawn at any time. Plan validity is dependent on required payments received. Administered by Volkswagen Financial Services. Retail sales only. For pricing and further details, please consult your authorised Volkswagen retailer or visit www.volkswagen.co.uk

Prices, specifications, features, technical and other information (including fuel consumption, CO₂ emissions and range) are updated regularly and are subject to change without notice (this may include changes between order and delivery). There may be a delay in updates to our materials – always consult your authorised Volkswagen retailer for the latest information.

Volkswagen UK may change RRP's at any time (this includes where there are government changes in regulation and/or legislation).

There may be a delay to any RRP displaying correctly on our materials. Always obtain prices from your chosen authorised Volkswagen retailer.

VAT IS CALCULATED AT 20%. EFFECTIVE FROM 15 APRIL 2021.

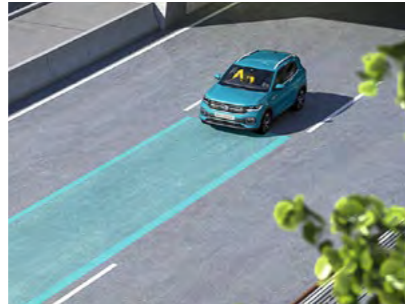
Standard items of equipment: S.



VOLKSWAGEN SERVICE
 3-year/60,000 miles warranty (whichever is soonest)
 3-year paintwork warranty
 12-year body protection warranty
 Volkswagen Roadside Assistance
 Exclusions and terms apply, [please click here](#) for more details

WHEELS AND SUSPENSION
 Alloy wheels, four 6J x 16" 'Rochester' Black with 205/60 R16 tyres and anti-theft wheel bolts
 Tyre mobility kit and compressor

EXTERIOR
 Body-coloured bumpers
 Body-coloured door handles
 Body-coloured door mirrors with integrated indicators (not Black Edition models)
 Front windscreen washers and wipers with 4 speed intermittent delay
 Galvanised body
 Halogen clear headlights, range adjustable via infotainment system, with separate LED daytime running lights
 Lower door sills and door pillars in black
 Radiator grille with high gloss surface and chrome strip
 Rear lights incorporating LED technology (except indicators)
 Rear screen wash/wipe with intermittent wipe
 Rear window aerial
 Tailgate with integrated rear roof spoiler



INTERIOR
 Glovebox
 Height and reach adjustable steering wheel
 Instrument lighting, white adjustable panel illumination
 Interior light delay
 Luggage compartment cover
 Luggage compartment light
 Reading lights, front and rear x 2
 Seating
 - Upholstery - 'Basket' cloth
 - Driver's and front passenger's seat height adjustment and manual lumbar adjustment
 - Driver's under seat drawer
 - Rear bench seat, movable and foldable
 - Split folding rear seat backrest 60:40
 'Softell' decorative inserts in dash and doors
 Storage compartments in front doors
 Three-spoke steering wheel
 12V socket in centre console

IN-CAR ENTERTAINMENT AND COMMUNICATIONS
 Ready 2 Discover infotainment system
 - 8" colour touch-screen with natural, intuitive, touch sensitive functionality
 - Bluetooth telephone and audio connection for compatible devices ¹
 - Car information display
 - DAB digital radio receiver
 - In-Car shop: Purchase additional services i.e. We Connect contract extensions or upgrade to navigation services after vehicle purchase
 - Integrated SIM-card
 - MDI (Multi Device Interface), via USB-C connection - compatible products only
 - Music playback from MP3, WMA and AAC files
 - Simultaneous pairing of 2 compatible mobile devices
 - Title and cover art display
 - 1 x USB-C connection, USB charging socket (compatible products only)
 - 6 speakers, front and rear
 Premium USB-C cable (choice of either Apple or Android smartphone compatibility)

WE CONNECT
 We Connect preparation ²
 - Driver and vehicle integration via We Connect Portal or We Connect app
 - Provides continuous interaction between the driver, vehicle and Volkswagen, via integrated SIM-card connectivity
 - Driver and vehicle integration with Volkswagen call centre or server for: 'eCall'- Emergency call service for SOS calls to emergency response
 - Vehicle based services for: Car breakdown call, Vehicle status, Doors and lights, Automatic accident notification, Vehicle health report, Driving data, Parking position, Service schedule

COMFORT AND CONVENIENCE
 Air conditioning, manual
 Dust and pollen filter
 Electric windows, front and rear
 Electrically heated and adjustable door mirrors
 Heated rear windscreen

DRIVER'S ASSISTANCE
 Blind spot detection, radar sensor controlled warning system for lane changing and blind spots
 Front Assist, radar sensor controlled distance monitoring system, City emergency braking system and Predictive Pedestrian Protection
 Lane Assist, camera controlled warning system that recognises road markings to correctively steer your vehicle should it drift out of its lane
 Power-assisted steering, speed-sensitive
 Remote tailgate unlocking, via key fob
 Speedo and rev counter, electronic odometer, trip, service interval display, exterior temperature gauge and fuel gauge
 Warning 'lights on' buzzer
 Warning sound and light for doors and tailgate if open

SAFETY AND SECURITY
 ABS (Anti-lock Braking System) with HBA (Hydraulic Brake Assist)
 Airbags
 - Curtain airbag system, for front and rear passengers
 - Driver's and front passenger's airbags with passenger's airbag deactivation switch
 - Front seat side impact airbags
 Automatic hazard lights activation under emergency braking
 Automatic Post-Collision Braking System
 Child security locks in the rear doors
 Disc brakes, front and drum brakes, rear (1.0 TSI 95 PS only)
 Driver's and front passenger's safety-optimised head restraints
 Electronic engine immobiliser
 ESC (Electronic Stability Control) including EDL (Electronic Differential Lock) and ASR (Traction Control), with deactivation via infotainment system
 Height-adjustable front three-point seat belts with tensioners
 Isofix child seat preparation compatible i-size (for 2 rear child seats)

Manual coming/automatic leaving home lighting function
 Misfuel prevention device
 Pan-European emergency call service
 PreCrash preventive occupant protection
 Reflectors in all doors
 Remote central locking with 2 remote folding keys
 Rigid safety cell with front and rear crumple zones
 Tyre pressure loss indicator
 Warning buzzer and light for front seat belts if unfastened
 3 rear head restraints
 3 rear three-point seat belts

EFFICIENCY
 Battery regeneration (recuperation - energy recovery during braking)
 Multifunction computer, includes visual gear change recommendation for improved fuel consumption
 Start/Stop function

¹ Devices must be Bluetooth HFP (Hands Free Profile) compatible, please contact your authorised Volkswagen retailer for specific phone compatibility.
² To use the free We Connect app you will need a smartphone with iOS or Android operating system and a SIM-card with a data option. Depending on your mobile tariff, sending and receiving data online may incur additional charges (e.g. roaming charges), particularly if you are using We Connect abroad. For more information on We Connect services, go to www.portal.volkswagen-we.com or contact your Volkswagen retailer.

The specifications listed are for information purposes only as our products are continually updated and changes may be made to the specifications at any time. If you require any specific feature, please consult your authorised Volkswagen retailer who is regularly updated with any change in specification. Specifications are subject to change without notice.

Additional items of standard equipment: SE (over S).



WHEELS AND SUSPENSION

Alloy wheels, four 6½J x 17" 'Clayton' with 205/55 R17 tyres and anti-theft wheel bolts

SAFETY AND SECURITY

Alarm with interior protection, with deactivation via infotainment system

EXTERIOR

Front fog lights, including static cornering function
Roof rails, black

INTERIOR

Driver's and front passenger's sun visors with vanity mirrors
Front centre armrest, with storage compartment
Leather trimmed three-spoke multifunction steering wheel and gear knob
'Pineapple' decorative inserts in dash and doors
Seating
– Upholstery – 'Triangle Ties/pearl' cloth
– Front seat back storage pockets
Variable boot floor

COMFORT AND CONVENIENCE

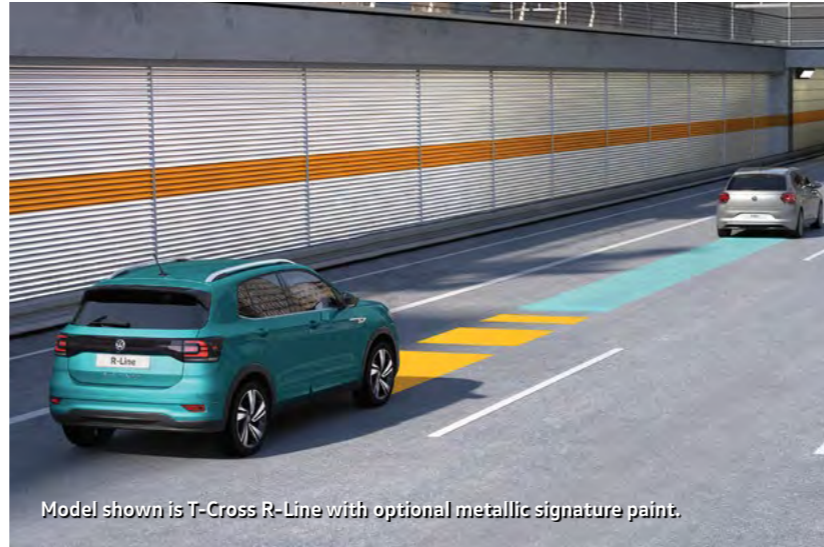
Automatic dimming interior rear-view mirror
Rain sensor

DRIVER'S ASSISTANCE

Adaptive Cruise Control (ACC), including Front Assist, radar sensor controlled distance monitoring system, City emergency braking system, cruise control and speed limiter
Driver Alert system
Dusk sensor, automatic driving lights

IN-CAR ENTERTAINMENT AND COMMUNICATIONS

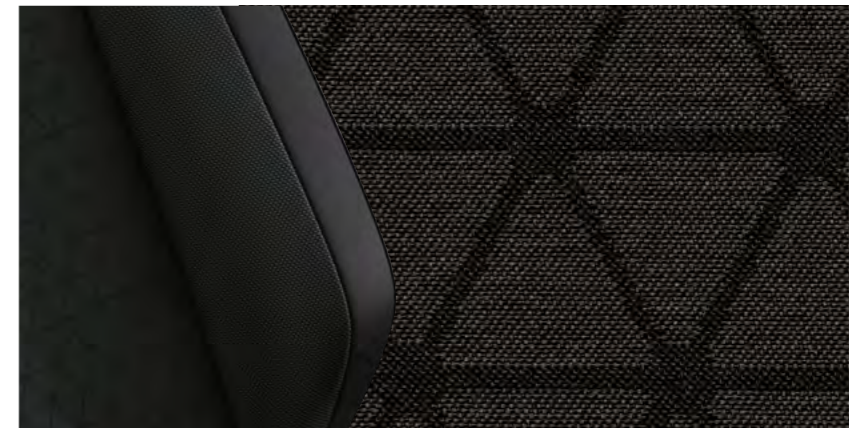
2 x USB-C connection, USB charging sockets, rear of centre console (compatible products only)
'App-Connect'¹
– Combines the functionality of Apple 'CarPlay', Google 'Android Auto' and 'MirrorLink'[™] allowing 'mirroring' of smartphone display on the infotainment touch-screen
– Wireless connection for Apple 'CarPlay'
– USB connection for Google 'Android Auto' and 'MirrorLink'[™]



Model shown is T-Cross R-Line with optional metallic signature paint.



Image shown features optional metallic signature paint.



¹ Only operable in conjunction with compatible tablets and smartphones including iPhone 5 and above. Please see www.volkswagen.co.uk to check compatibility.

The specifications listed are for information purposes only as our products are continually updated and changes may be made to the specifications at any time. If you require any specific feature, please consult your authorised Volkswagen retailer who is regularly updated with any change in specification. Specifications are subject to change without notice.

[Configure now >](#)



Additional items of standard equipment: UNITED[†] (over SE).



Model shown is T-Cross UNITED with optional metallic paint.

WHEELS AND SUSPENSION

Alloy wheels, four 6J x 16" 'Dublin' Black diamond-turned with 205/60 R16 tyres and anti-theft wheel bolts

EXTERIOR

Rear tinted glass from B-pillar backwards, approx. 65% tinted
Unique 'UNITED' badging on B-pillar

INTERIOR

Atlantic Blue decorative inserts in dash and doors
Brushed stainless steel pedals
Carpet mats, front and rear
Reading lights, front and rear x 2 incorporating LED technology
Seating
- Upholstery - 'Waveform' cloth
- Heated front seats
Unique 'UNITED' door sill protectors

COMFORT AND CONVENIENCE

Ambient lighting in front footwell
Heated windscreen washer jets

DRIVER'S ASSISTANCE

Low washer fluid warning light
Parking sensors, front and rear - ultrasonic, audible with audio volume reduction when activated and optical parking display via vehicle's infotainment system

IN-CAR ENTERTAINMENT AND COMMUNICATIONS

Voice activation

[†] Please note these models are only available from stock and not available to factory order.

The specifications listed are for information purposes only as our products are continually updated and changes may be made to the specifications at any time. If you require any specific feature, please consult your authorised Volkswagen retailer who is regularly updated with any change in specification. Specifications are subject to change without notice.

Additional items of standard equipment: ACTIVE (over SE).

EXTERIOR

Rear tinted glass from B-pillar backwards, approx. 65% tinted
 Unique 'ACTIVE' badging on B-pillar

INTERIOR

Brushed stainless steel pedals
 Carpet mats, front and rear
 'Matt Silver' decorative inserts in dash and doors
 Seating
 – Upholstery – 'Trapeze' cloth
 – Heated front seats
 Unique 'ACTIVE' door sill protectors

COMFORT AND CONVENIENCE

Ambient lighting in front footwell
 Electrically heated and foldable door mirrors, door mirror puddle lights and reverse activated kerb-view adjustment on passenger's door mirror
 Heated windscreen washer jets

DRIVER'S ASSISTANCE

Low washer fluid warning light
 Parking sensors, front and rear – ultrasonic, audible with audio volume reduction when activated and optical parking display via vehicle's infotainment system

IN-CAR ENTERTAINMENT AND COMMUNICATIONS

Discover Media Navigation infotainment system (in addition to Ready 2 Discover infotainment system)
 – Branded points of interest
 – Dynamic guidance via We Connect Plus online traffic information
 – Preloaded European navigation data
 – SMS functionality – read, compose and send SMS messages using touch-screen display (when stationary, compatible Android smartphones only)
 – Speed Limit Display¹
 – Three route options (Fast, Short, Eco)
 – 2D/3D map view

WE CONNECT PLUS®

We Connect Plus preparation^{2,3}
 – Vehicle based services for: Area alert, Speed alert, Horn and indicators, Online anti-theft alarm, Lock & unlock⁴
 – Navigation based services for: Online voice control, Online traffic information, Online route calculations and Online destination import. Petrol station, Charging point and Parking locations. Online map updates
 – Streaming and internet based services⁵ for: Internet radio, Wi-Fi hotspot and Media streaming²



Model shown is new T-Cross ACTIVE with optional non-metallic paint.



- 1 Speed Limit Display only reflects national speed limits and does not show temporary speed limit restrictions, or where permanent changes to speed limits are made in-between map updates.
- 2 To use the free We Connect app you will need a smartphone with iOS or Android operating system and a SIM-card with a data option. Depending on your mobile tariff, sending and receiving data online may incur additional charges (e.g. roaming charges), particularly if you are using We Connect abroad. For more information on We Connect services, go to www.portal.volkswagen-we.com or contact your Volkswagen retailer.
- 3 We Connect Plus services are accessed via a compatible mobile device. Please see www.portal.volkswagen-we.com for more information. The use of We Connect Plus entails exchanging large volumes of data. As such, we strongly recommend that you sign-up for a flat rate data plan with your mobile network provider. Information on the duration of We Connect Plus services can be obtained once a user account has been registered on the We Connect web portal.
- 4 Lock & unlock service is a secure service and requires that your identity be verified via the Volkswagen Ident process. Your identity will be verified by a Volkswagen retailer or via video chat.
- 5 For the use of the Streaming and Internet based services and for the Wi-Fi hotspot, data packages can be purchased from Cubic Telecom, our mobile communications partner and used in the network coverage area within many European countries. You can find information on prices and supported countries at www.vw.cubictelecom.com

The specifications listed are for information purposes only as our products are continually updated and changes may be made to the specifications at any time. If you require any specific feature, please consult your authorised Volkswagen retailer who is regularly updated with any change in specification. Specifications are subject to change without notice.

[Configure now >](#)



Additional items of standard equipment: Black Edition (over SE).



Model shown is new T-Cross Black Edition with optional pearl effect paint.

WHEELS AND SUSPENSION

Alloy wheels, four 6½J x 17" 'Manila' Black diamond-turned with 205/55 R17 tyres and anti-theft wheel bolts

EXTERIOR

- Black door mirrors
- Dynamic headlight range adjustment
- LED dipped and main beam headlights with automatic range adjustment including separate unique signature
- LED daytime running lights
- Rear tinted glass from B-pillar backwards, approx. 65% tinted

INTERIOR

- Carpet mats, front and rear
- 'Transition' decorative inserts in dash and doors
- Seating
 - Upholstery – 'Diag' cloth
 - Front sport seats with height and lumbar adjustment

DRIVER'S ASSISTANCE

- Parking sensors, front and rear
 - ultrasonic, audible with audio volume reduction when activated and optical parking display via vehicle's infotainment system

The specifications listed are for information purposes only as our products are continually updated and changes may be made to the specifications at any time. If you require any specific feature, please consult your authorised Volkswagen retailer who is regularly updated with any change in specification. Specifications are subject to change without notice.

Additional items of standard equipment: SEL (over SE).



WHEELS AND SUSPENSION

Alloy wheels, four 6½J x 17" 'Chesterfield' with 205/55 R17 tyres and anti-theft wheel bolts

EXTERIOR

LED dipped and main beam headlights with automatic range adjustment including separate unique signature LED daytime running lights
Rear tinted glass from B-pillar backwards, approx. 65% tinted
Roof rails, silver anodised

INTERIOR

Carpet mats, front and rear
'Lizard' decorative inserts in dash and doors
Reading lights, front and rear x 2 incorporating LED technology
Seating
- Upholstery - 'Hexalink/pearl' cloth
- Front sport seats with height and lumbar adjustment

COMFORT AND CONVENIENCE

Climate control - 2Zone electronic air conditioning with automatic air recirculation

DRIVER'S ASSISTANCE

Parking sensors, front and rear - ultrasonic, audible with audio volume reduction when activated and optical parking display via vehicle's infotainment system

IN-CAR ENTERTAINMENT AND COMMUNICATIONS

Discover Media Navigation infotainment system (in addition to Ready 2 Discover infotainment system)
- Branded points of interest
- Dynamic guidance via We Connect Plus online traffic information
- Preloaded European navigation data
- SMS functionality - read, compose and send SMS messages using touch-screen display (when stationary, compatible Android smartphones only)
- Speed Limit Display¹
- Three route options (Fast, Short, Eco)
- 2D/3D map view



WE CONNECT PLUS®

We Connect Plus preparation^{2,3}
- Vehicle based services for: Area alert, Speed alert, Horn and indicators, Online anti-theft alarm, Lock & unlock⁴
- Navigation based services for: Online voice control, Online traffic information, Online route calculations and Online destination import. Petrol station, Charging point and Parking locations. Online map updates
- Streaming and internet based services⁵ for: Internet radio, Wi-Fi hotspot and Media streaming²



1 Speed Limit Display only reflects national speed limits and does not show temporary speed limit restrictions, or where permanent changes to speed limits are made in-between map updates.
2 To use the free We Connect app you will need a smartphone with iOS or Android operating system and a SIM-card with a data option. Depending on your mobile tariff, sending and receiving data online may incur additional charges (e.g. roaming charges), particularly if you are using We Connect abroad. For more information on We Connect services, go to www.portal.volkswagen-we.com or contact your Volkswagen retailer.
3 We Connect Plus services are accessed via a compatible mobile device. Please see www.portal.volkswagen-we.com for more information. The use of We Connect Plus entails exchanging large volumes of data. As such, we strongly recommend that you sign-up for a flat rate data plan with your mobile network provider. Information on the duration of We Connect Plus services can be obtained once a user account has been registered on the We Connect web portal.
4 Lock & unlock service is a secure service and requires that your identity be verified via the Volkswagen Ident process. Your identity will be verified by a Volkswagen retailer or via video chat.
5 For the use of the Streaming and Internet based services and for the Wi-Fi hotspot, data packages can be purchased from Cubic Telecom, our mobile communications partner and used in the network coverage area within many European countries. You can find information on prices and supported countries at www.vw.cubictelecom.com

The specifications listed are for information purposes only as our products are continually updated and changes may be made to the specifications at any time. If you require any specific feature, please consult your authorised Volkswagen retailer who is regularly updated with any change in specification. Specifications are subject to change without notice.

Additional items of standard equipment: R-Line (over SEL).

WHEELS AND SUSPENSION

Alloy wheels, four 7J x 18" 'Nevada' Black with 215/45 R18 tyres and anti-theft wheel bolts

EXTERIOR

Body-coloured rear roof spoiler
 'R-Line' styling pack - 'R-Line' design front and rear bumpers, black wheel arch extensions, body-coloured side skirts
 Unique 'R-Line' badging

INTERIOR

Aluminium-look pedals
 Black rooflining and sun visors
 Carpet mats, front and rear
 Door sill protectors, stainless steel
 Leather trimmed three-spoke multifunction steering wheel with contrast stitching and aluminium inserts with 'R-Line' logo
 Paddle shift on steering wheel (auto DSG only)
 'Race' decorative inserts in dash and doors
 Seating
 - Upholstery - 'Carbon Flag' cloth
 - Front sports seats with embossed 'R-Line' logo on rear seat backrest

DRIVER'S ASSISTANCE

Digital Cockpit Pro, 10.3" high resolution TFT dash display screen with customisable menus and information



Image shown features optional metallic signature paint.



Image shown features optional metallic signature paint.



Interior shown is T-Cross R-Line with optional Park Assist and metallic paint.

The specifications listed are for information purposes only as our products are continually updated and changes may be made to the specifications at any time. If you require any specific feature, please consult your authorised Volkswagen retailer who is regularly updated with any change in specification. Specifications are subject to change without notice.

Take it easy. With a little help.

Like to go your own way? No problem. The T-Cross helps you to tread your own path easily and safely. Driver assistance systems, such as Lane Assist, Parking sensors and Park Assist help you to overcome difficult situations or avoid them altogether. Life is easy in the T-Cross.



01 Lane Assist is a camera controlled warning system that alerts you if your vehicle drifts out of its lane, helping to reduce the chance of an accident and making long motorway journeys safer. Using a camera located in the rear-view mirror unit, it monitors the road markings and prevents unintentional lane deviations. The system only intervenes if the indicators are not used, so if you decide to change lanes and indicate, the intelligent system recognises this and switches off. Standard on all models.

02 The rear-view camera displays the area behind your vehicle on the screen of the vehicle's infotainment system, helping you to manoeuvre into tight spaces quickly and easily. Auxiliary lines help you navigate safely into parking spaces, and thanks to the high resolution display, even small obstacles such as kerbs are visible. Optional on SE, Black Edition, SEL and R-Line models.

03 The Park Assist system not only makes parallel parking easier, but also helps you reverse park into a space at 90 degrees to the kerb. Using ultrasonic sensors, Park Assist will detect a parking space large enough for either bay or parallel parking. Once the vehicle is in reverse, all the driver has to do is operate the accelerator and brake and keep a lookout, while the T-Cross steers itself into its chosen space. Optional on SE, Black Edition, SEL and R-Line models.

04 Adaptive Cruise Control (ACC) helps you maintain a pre-selected, maximum speed, ensuring you maintain a set distance between your vehicle and the one in front. Standard on SE models and above and optional on S models.

05 Front and rear parking sensors assist parking manoeuvres by emitting both audible and visual signals, alerting the driver to any obstacles in the way. The closer you are to an obstacle the faster the sound frequency, while an optical parking display indicates your position in relation to obstacles on the screen of the vehicle's infotainment system. Standard on UNITED, ACTIVE, Black Edition, SEL and R-Line and optional on S and SE models.

Models shown are T-Cross R-Line with optional metallic signature paint.

Factory-fitted options.

WHEELS AND SUSPENSION

	S	SE	UNITED	ACTIVE	Black Edition	SEL	R-Line	Basic RRP £ Excluding VAT	Total RRP £ Including VAT
17" 'Clayton' Four 6½J x 17" 'Clayton' with 205/55 R17 tyres and anti-theft wheel bolts	-	●	-	●	-	○	-	112.50	135.00
18" 'Koln' Black Four 7J x 18" 'Koln' Black diamond-turned with 215/45 R18 tyres and anti-theft wheel bolts	-	-	-	-	-	○	-	379.17	455.00
18" 'Nevada' Black Four 7J x 18" 'Nevada' Black diamond-turned with 215/45 R18 tyres and anti-theft wheel bolts	-	-	-	-	-	○	●	458.33	550.00
Steel space saver spare wheel Steel space saver spare wheel, including tool kit and jack. <i>In lieu of tyre mobility kit and compressor</i>	○	○	-	○	○	○	○	95.83	115.00

Choosing larger alloy wheels than standard, as an option, may result in increased fuel consumption as well as higher CO₂ emissions and subsequently increased Vehicle Excise Duty (VED) band, and BIK rates paid by company car drivers may increase. This is due to the fact that larger wheels have both more aerodynamic drag and more mechanical drag, resulting in increased rolling resistance and increased wind resistance. As a result, the VED band that the vehicle falls into may increase from its original VED band when fitted with standard size wheels. In some instances, the recommended 'On the road' retail price paid for the vehicle may increase as a result of the increased VED rate. Please refer to [CO₂ emissions, BIK % and VED Bands with optional wheels section](#).

PAINT

Non-Metallic	Urano Grey ¹	○	○	○	○	○ ³	○	-	No cost option
	Pure White, Flash Red	○	○	○	○	○ ³	○	-	295.83 355.00
	Pure White	-	-	-	-	-	○	-	No cost option
Metallic and Pearl Effect	Reef Blue, Energetic Orange, Reflex Silver, Limestone Grey, Deep Black ¹	○	○	-	○	○ ³	○	○	487.50 585.00
	Reef Blue, Energetic Orange, Reflex Silver, Atlantic Blue ² , Limestone Grey, Deep Black ¹	-	-	○	-	-	-	-	487.50 585.00
Metallic Signature	Makena Turquoise	○	○	○	○	○ ³	○	○	620.23 745.00

Please refer to [Paint and Combinations section](#), or visit www.volkswagen.co.uk for full availability of paint colours.

1 Includes door mirror housings in Black non-metallic finish. 2 Atlantic Blue is only available on UNITED models. 3 Door mirror housings in Black are standard on Black Edition models.

● Standard equipment ○ Optional equipment - Not available. Factory-fitted options are subject to availability and extended delivery.

Volkswagen UK may change RRP's at any time (this includes where there are government changes in regulation and/or legislation).

There may be a delay to any RRP displaying correctly on our materials. Always obtain prices from your chosen authorised Volkswagen retailer.

VAT IS CALCULATED AT 20%. EFFECTIVE FROM 15 APRIL 2021.

Factory-fitted options.

DESIGN PACKS

	S	SE	UNITED	ACTIVE	Black Edition	SEL	R-Line	Basic RRP £ Excluding VAT	Total RRP £ Including VAT
Energetic Orange 17" alloy design pack Four 6½J x 17" 'Manila' Energetic Orange diamond-turned alloy wheels, 205/55 R17 tyres and anti-theft wheel bolts and Energetic Orange door mirror housings Front sports seats including lumbar support with 'Diag' upholstery in Titan Black/Orange/Ceramique, 'Transition' dashpad in Energetic Orange/Grey and centre console in Energetic Orange Rear tinted glass from B-pillar backwards, approx. 65% tinted	-	O	-	-	-	-	-	450.00	540.00
Bamboo Garden Green 17" alloy design pack Four 6½J x 17" 'Manila' Bamboo Garden Green diamond-turned alloy wheels, 205/55 R17 tyres and anti-theft wheel bolts and Bamboo Garden Green door mirror housings Front sports seats including lumbar support with 'Diag' upholstery Makena Turquoise/Orange/Platinum Grey, 'Transition' dashpad in high-gloss Black/Platinum Grey and centre console in high-gloss black and grey Rear tinted glass from B-pillar backwards, approx. 65% tinted	-	O	-	-	-	-	-	450.00	540.00
Black 18" alloy design pack¹ Four 7J x 18" 'Koln' Black diamond-turned alloy wheels, 215/45 R18 tyres and anti-theft wheel bolts and Black non-metallic door mirror housings Front sports seats including lumbar support with 'Diag' upholstery in Neutral/Titan Black, 'Transition' dashpad in high-gloss Black/Platinum Grey and centre console in high-gloss black and grey Rear tinted glass from B-pillar backwards, approx. 65% tinted	-	-	-	-	-	O	-	541.67	650.00
Energetic Orange 18" alloy design pack Four 7J x 18" 'Koln' Energetic Orange diamond-turned alloy wheels, 215/45 R18 tyres and anti-theft wheel bolts and Energetic Orange door mirror housings Front sports seats including lumbar support with 'Diag' upholstery in Titan Black/Orange/Ceramique, 'Transition' dashpad in Energetic Orange/Grey and centre console in Energetic Orange Rear tinted glass from B-pillar backwards, approx. 65% tinted	-	-	-	-	-	O	-	541.67	650.00
Bamboo Garden Green 18" alloy design pack Four 7J x 18" 'Koln' Bamboo Garden Green diamond-turned alloy wheels, 215/45 R18 tyres and anti-theft wheel bolts and Bamboo Garden Green door mirror housings Front sports seats including lumbar support with 'Diag' upholstery Makena Turquoise/Orange/Platinum Grey, 'Transition' dashpad in high-gloss Black/Platinum Grey and centre console in high-gloss black and grey Rear tinted glass from B-pillar backwards, approx. 65% tinted	-	-	-	-	-	O	-	541.67	650.00

Please refer to [Paint and Combinations section](#), or visit www.volkswagen.co.uk for full availability of paint colours.

¹ Includes door mirror housings in Black non-metallic finish.

● Standard equipment ○ Optional equipment – Not available. Factory-fitted options are subject to availability and extended delivery.

Volkswagen UK may change RRP's at any time (this includes where there are government changes in regulation and/or legislation).
 There may be a delay to any RRP displaying correctly on our materials. Always obtain prices from your chosen authorised Volkswagen retailer.

VAT IS CALCULATED AT 20%. EFFECTIVE FROM 15 APRIL 2021.

Configure now >



Factory-fitted options.

EXTERIOR

	S	SE	UNITED	ACTIVE	Black Edition	SEL	R-Line	Basic RRP £ Excluding VAT	Total RRP £ Including VAT
Front fog lights	With static cornering function	<input type="radio"/>	<input type="radio"/>	<input checked="" type="radio"/>	<input type="radio"/>	<input type="radio"/>	<input type="radio"/>	216.67	260.00
LED headlights	LED dipped and main beam headlights with automatic range adjustment including separate unique signature LED daytime running lights	-	<input type="radio"/>	<input type="radio"/>	<input type="radio"/>	<input type="radio"/>	<input type="radio"/>	916.67	1,100.00
Rear tinted glass	Rear tinted glass from B-pillar backwards, approx. 65% tinted	<input type="radio"/>	<input type="radio"/>	<input checked="" type="radio"/>	<input type="radio"/>	<input type="radio"/>	<input type="radio"/>	175.00	210.00

INTERIOR

Carpet mats	Front and rear	<input type="radio"/>	<input type="radio"/>	<input checked="" type="radio"/>	<input type="radio"/>	<input type="radio"/>	<input type="radio"/>	79.17	95.00
Steering wheel – multifunction	Multifunction steering wheel	<input type="radio"/>	<input type="radio"/>	<input checked="" type="radio"/>	<input type="radio"/>	<input type="radio"/>	<input type="radio"/>	104.17	125.00

SAFETY AND SECURITY

Alarm	With remote central locking. Including interior protection with deactivation via infotainment system	<input type="radio"/>	<input type="radio"/>	<input checked="" type="radio"/>	<input type="radio"/>	<input type="radio"/>	<input type="radio"/>	216.67	260.00
-------	--	-----------------------	-----------------------	----------------------------------	-----------------------	-----------------------	-----------------------	--------	--------

● Standard equipment ○ Optional equipment – Not available. Factory-fitted options are subject to availability and extended delivery.

Volkswagen UK may change RRP's at any time (this includes where there are government changes in regulation and/or legislation). There may be a delay to any RRP displaying correctly on our materials. Always obtain prices from your chosen authorised Volkswagen retailer.

VAT IS CALCULATED AT 20%. EFFECTIVE FROM 15 APRIL 2021..

Factory-fitted options.

IN-CAR ENTERTAINMENT AND COMMUNICATIONS

	S	SE	UNITED	ACTIVE	Black Edition	SEL	R-Line	Basic RRP £ Excluding VAT	Total RRP £ Including VAT
beats soundpack	-	O	-	O	O	O	O	370.83	445.00
Discover Media Navigation infotainment system with We Connect Plus preparation ¹	8" colour touch-screen with natural, intuitive, touch sensitive functionality for navigation, infotainment and radio functions. Preloaded European navigation data, 2D/3D map view, three calculated routes (Fast, Short, Eco), dynamic guidance via We Connect Plus online traffic information, SMS functionality (when stationary, compatible Android smartphones only), branded points of interest and Speed Limit Display ² . We Connect Plus preparation providing online access to: Vehicle based services for Area alert, Speed alert, Horn and indicators, Online anti-theft alarm, Lock & unlock ³ . Navigation based services for: Online voice control, Online traffic information, Online route calculations and Online destination import. Petrol station, Charging point and Parking locations. Online map updates. Streaming and internet based services for Internet radio ⁴ , Wi-Fi hotspot ⁴ , Media streaming ⁴ . <i>Includes online navigation software updates, enabling you to download the latest map data. Please contact your authorised Volkswagen retailer for full details</i>							716.67	860.00
Discover Navigation Pro touch-screen navigation infotainment system including streaming and internet with integrated voice activation, 'Gesture Control' and We Connect Plus preparation ¹	Voice activated control system – responds to spoken voice commands for navigation and telephone functions. 9.2" colour touch-screen control system for navigation and audio functions. Preloaded European navigation data, 3D map view, three calculated routes (Fast, Short, Eco), dynamic guidance via We Connect Plus online traffic information, branded points of interest and Speed Limit Display ² . We Connect Plus services access providing online access to a range of useful information such as traffic reports and petrol station and parking locations. Includes online navigation software updates, enabling you to download the latest map data. <i>Please contact your authorised Volkswagen retailer for full details</i>							1,029.17	1,255.00
Inductive smartphone charging ⁵	-	O	-	O	O	O	O	87.50	105.00
Voice activation	O ⁶	O	●	O	O	O	O	179.17	215.00
'App-Connect'	Combined functionality of Apple 'CarPlay', Google 'Android Auto' and 'MirrorLink'™ allowing 'mirroring' of smartphone display on the infotainment touch-screen via wireless connection for Apple 'CarPlay' and USB connection for Google 'Android Auto' and 'MirrorLink'™. Display and operation of certified apps including audio and voice control (if supported by the app). Usage of certified apps only while driving. Includes 2 x USB-C connection, USB charging sockets in front centre console (compatible products only). <i>Only operable in conjunction with compatible smartphones including iPhone 5 and above. Please see www.volkswagen.co.uk to check smartphone compatibility</i>							166.67	200.00

1 We Connect Plus services are accessed via a compatible mobile device. Please see www.volkswagen.co.uk for more information. The use of We Connect Plus services entails exchanging large volumes of data. As such, we strongly recommend that you sign-up for a flat rate data plan with your mobile network provider. Information on the duration of We Connect Plus services can be obtained once a user account has been registered on the We Connect web portal. 2 Speed Limit Display only reflects national speed limits and does not show temporary speed limit restrictions, or where permanent changes to speed limits are made in-between map updates. 3 Lock & unlock service is a secure service and requires that your identity be verified via the Volkswagen Ident process. Your identity will be verified by a Volkswagen retailer or via video chat. 4 For the use of the Streaming and Internet based services and for the Wi-Fi hotspot, data packages can be purchased from Cubic Telecom, our mobile communications partner and used in the network coverage area within many European countries. You can find information on prices and supported countries at vw.cubictelcom.com 5 Only operable in conjunction with compatible inductive charge enabled services smartphones. Please see www.qiwireless.com to check smartphone compatibility. 6 Must be ordered in conjunction with multifunction leather trimmed steering wheel.

● Standard equipment ○ Optional equipment - Not available. Factory-fitted options are subject to availability and extended delivery.

Volkswagen UK may change RRP's at any time (this includes where there are government changes in regulation and/or legislation). There may be a delay to any RRP displaying correctly on our materials. Always obtain prices from your chosen authorised Volkswagen retailer.

VAT IS CALCULATED AT 20%. EFFECTIVE FROM 15 APRIL 2021.

Factory-fitted options.

COMFORT AND CONVENIENCE

	S	SE	UNITED	ACTIVE	Black Edition	SEL	R-Line	Basic RRP £ Excluding VAT	Total RRP £ Including VAT
Climate control	2Zone electronic air conditioning with automatic air recirculation and allergy filter							729.17	875.00
Electrically foldable door mirrors	Electrically heated, adjustable and foldable door mirrors, including reverse activated kerb-view adjustment on passenger's side							137.50	165.00
Keyless entry	Remote keyless entry using key fob including Start/Stop button on centre console							291.67	350.00
Smoking pack	Cigarette lighter and ashtray in front							20.83	25.00
Winter pack	Heated front seats, heated windscreen washer jets and low washer fluid warning light							258.33	310.00

DRIVER'S ASSISTANCE

Adaptive Cruise Control (ACC)	Including Front Assist, radar sensor controlled distance monitoring system and City emergency braking system							433.33	520.00
Digital Cockpit Pro	10.3" high resolution TFT dash display screen with customisable menus and information. In lieu of multifunction display							320.83	385.00
Driving profile selection	Choice of four preset modes: Eco, Normal, Sport or Individual modes. Individual mode allows manual settings for steering, drive and air conditioning settings							116.67	140.00
High Beam Assist	Automatic sensing for switching between dipped and main beam							125.00	150.00
Parking sensors, front and rear	Ultrasonic, audible with optical parking display via vehicle's infotainment system							387.50	465.00
Park Assist	Sensor controlled steering aid to assist parallel or bay parking. Features optical parking display via vehicle's infotainment system							500.00	600.00
Rear-view camera	Displayed via the vehicle's infotainment system display							108.33	130.00
								225.00	270.00

1 Must be ordered in conjunction with multifunction leather trimmed steering wheel. 2 Not in conjunction with 1.0 ltr TSI 95 PS engine.

● Standard equipment ○ Optional equipment – Not available. Factory-fitted options are subject to availability and extended delivery.

Volkswagen UK may change RRP's at any time (this includes where there are government changes in regulation and/or legislation). There may be a delay to any RRP displaying correctly on our materials. Always obtain prices from your chosen authorised Volkswagen retailer.

VAT IS CALCULATED AT 20%. EFFECTIVE FROM 15 APRIL 2021.

[Configure now >](#)



Shows its colours.

A choice of vibrant colour schemes including Energetic Orange, Black and Bamboo Garden Green, allow you to express yourself like never before. The optional Energetic Orange Design pack is noticeable and sporty, perfect for those who value individuality and character. Whatever your taste, don't follow the pack. Be brave. Make a statement.



Model shown is T-Cross SEL with optional Energetic Orange Design pack and metallic paint.



01

01 The eye-catching 'Transition' dashpad décor in Energetic Orange/Grey transforms the interior, giving a sporty, vibrant look. Optional on SE and SEL models as part of the Design pack. Interior shown is T-Cross SEL with optional Energetic Orange Design pack, Digital Cockpit Pro and metallic paint.



02



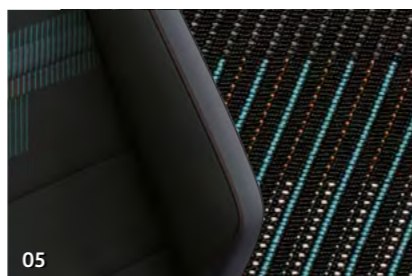
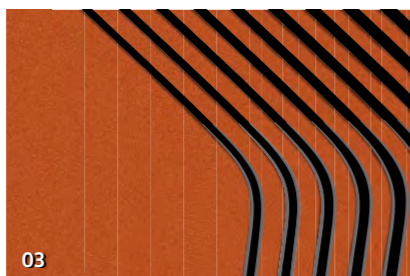
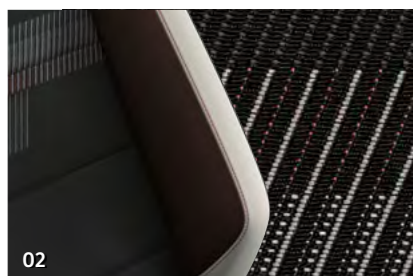
03

02 The choice of upholstery colours included in the optional Design pack consist of either Neutral/Titan Black, Titan Black/Orange/Ceramique or Makena Turquoise/Orange/Platinum Grey, creating a dynamic, contemporary look that complements the front sports seats, giving them a funky, stylish appeal. Optional on SE and SEL models as part of the Design pack.

03 18 inch 'Koln' Energetic Orange alloy wheels perfectly complement the exterior Energetic Orange paintwork. Optional on SEL models as part of the Design pack.

Images shown feature optional metallic paint.

Design packs SE.



SE **ENERGETIC ORANGE 17" ALLOY DESIGN PACK**

Alloy wheels

01 'Manila' Energetic Orange diamond-turned 6½J x 17" alloy wheels with 205/55 R17 tyres and anti-theft wheel bolts.

Upholstery

02 'Diag' cloth Titan Black/Orange/Ceramique GL

Decorative inserts

03 'Transition' Energetic Orange/Grey 9GD

SE **BAMBOO GARDEN GREEN 17" ALLOY DESIGN PACK**

Alloy wheels

04 'Manila' Bamboo Garden Green diamond-turned 6½J x 17" alloy wheels with 205/55 R17 tyres and anti-theft wheel bolts.

Upholstery

05 'Diag' cloth Makena Turquoise/Orange/Platinum Grey DL

Decorative inserts

06 'Transition' High-gloss Black/Platinum Grey 9GE

Optional
SE | SE

Images shown feature optional metallic paint.

Design packs SEL.



07



10



13



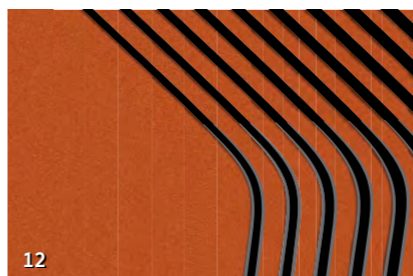
08



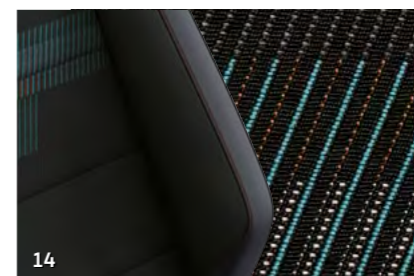
09



11



12



14



15

SEL BLACK 18" ALLOY DESIGN PACK

Alloy wheels

07 'Koln' Black diamond-turned 7J x 18" alloy wheels with 215/45 R18 tyres and anti-theft wheel bolts.

Upholstery

08 'Diag' cloth Neutral/Titan Black UL

Decorative inserts

09 'Transition' High-gloss Black/Platinum Grey 9GE

SEL ENERGETIC ORANGE 18" ALLOY DESIGN PACK

Alloy wheels

10 'Koln' Energetic Orange diamond-turned 7J x 18" alloy wheels with 215/45 R18 tyres and anti-theft wheel bolts.

Upholstery

11 'Diag' cloth Titan Black/Orange/Ceramique GL

Decorative inserts

12 'Transition' Energetic Orange/Grey 9GD

SEL BAMBOO GARDEN GREEN 18" ALLOY DESIGN PACK

Alloy wheels

13 'Koln' Bamboo Garden Green diamond-turned 7J x 18" alloy wheels with 215/45 R18 tyres and anti-theft wheel bolts.

Upholstery

14 'Diag' cloth Makena Turquoise/Orange/Platinum Grey DL

Decorative inserts

15 'Transition' High-gloss Black/Platinum Grey 9GE

Optional
SEL | SEL

Images shown feature optional metallic paint.

Accessories. Your Volkswagen your way.

	Part number	Total RRP £ Including VAT	Total fitted RRP £ Including VAT		Part number	Total RRP £ Including VAT	Total fitted RRP £ Including VAT
PROTECTION							
Luxury carpet mat set – front and rear	2GN 061 270 WGK	89.00	-	Rear bumper protection film – transparent	2GM 061 197	-	84.00
Carpet mat set – front and rear	2GN 061 404 WGK	60.50	-	Flexible loadliner	2GM 061 160	53.00	-
Rubber floor mats – front – black	2GN 061 502 82V	44.00	-	Semi-rigid loadliner	2GM 061 161	63.50	-
Rubber floor mats – rear – black	2GM 061 512 82V	32.50	-	Reversible boot mat	2GM 061 210	85.50	-
Mudflaps – front	2GM 075 111	-	75.00	Door sill protection film – black/silver	2GM 071 310	-	132.50
Mudflaps – rear	2GM 075 101	-	75.00				
TRAVEL AND TRANSPORT							
Roof bars	2GA 071 151 A	204.50	-	Clothes hanger	00V 061 127	34.00	-
Volkswagen roof box – 340 litres – black	000 071 200	270.50	-	Towbar – fixed, including electrical installation kit	2GM 092 103 B	-	778.00
Bicycle holder	000 071 128 F	117.50	-	Towbar – detachable, including electrical installation kit	2GM 092 150 B	-	871.00
Safety kit	000 093 059	26.00	-	Compact III towbar mounted bicycle carrier	3C2 071 105 A	610.00	-
Luggage net	5N0 065 111	39.00	-	Basic II bicycle carrier – holds up to 2 bikes, no boot access while mounted	000 071 105 L	458.00	-
STYLING AND TECHNOLOGY							
Running boards – silver-anodised aluminium and black anti-slip inserts ¹	2GM 071 691	-	712.50	Meta Trak S5-VTS – GPS Tracker including 1 year subscription	ZGB 000 054 003	-	499.00
Door sill trims – stainless steel (front doors)	2GM 071 303	-	127.00	Front – UTR (Universal Traffic Recorder)	000 063 511 B	-	419.00
Rear chrome strip	2GM 071 360	-	92.50	Front and rear – UTR (Universal Traffic Recorder)	000 063 511 C	-	626.50

¹ Alternative Jack 5QF 011 031 C may be required – RRP £48.00

Accessory prices are the manufacturer's Recommended Retail Prices (RRP), shown exclusive and inclusive of fitting where applicable, inclusive of appropriate VAT, and are charged in addition to recommended 'On the road' retail price paid for the vehicle. For full details, please contact your authorised Volkswagen retailer.

Volkswagen UK may change RRP's at any time (this includes where there are government changes in regulation and/or legislation).

There may be a delay to any RRP displaying correctly on our materials. Always obtain prices from your chosen authorised Volkswagen retailer.

VAT IS CALCULATED AT 20%, EXCEPT RETAILER SUPPLIED CHILD SAFETY SEATS WHERE IT IS CALCULATED AT 5%. EFFECTIVE FROM 15 APRIL 2021.

[Configure now >](#)



Alloy wheels.



01

S



02

SE A SEL



03

U



05

SEL



04

BE



06

RL SEL



07

SEL

01 'Rochester' Black diamond-turned 6J x 16" alloy wheels with 205/60 R16 tyres and anti-theft wheel bolts.

02 'Clayton' 6½J x 17" alloy wheels with 205/55 R17 tyres and anti-theft wheel bolts.

03 'Dublin' 6J x 16" alloy wheels with 205/60 R16 tyres and anti-theft wheel bolts.

04 'Manila' Black diamond-turned 6½J x 17" alloy wheels with 205/55 R17 tyres and anti-theft wheel bolts.

05 'Chesterfield' 6½J x 17" alloy wheels with 205/55 R17 tyres and anti-theft wheel bolts.

06 'Nevada' Black diamond-turned 7J x 18" alloy wheels with 215/45 R18 tyres and anti-theft wheel bolts.

07 'Koln' Black diamond-turned 7J x 18" alloy wheels with 215/45 R18 tyres and anti-theft wheel bolts.

Standard Optional

S | S SE | SE U | UNITED A | ACTIVE BE | Black Edition SEL | SEL RL | R-Line

Please note, choosing larger alloy wheels than standard, as an option, may result in increased fuel consumption. This is due to the fact that larger wheels have both more aerodynamic drag and more mechanical drag, resulting in increased rolling resistance and increased wind resistance. Images shown feature optional metallic paint.

Paint.



01
 S SE U A BE SEL RL



02
 S SE U A BE SEL



03
 S SE U A BE SEL



04
 S SE U A BE SEL RL



05
 S SE U A BE SEL RL



06
 S SE U A BE SEL RL



07
 U



08
 S SE U A BE SEL RL



09
 S SE U A BE SEL RL



10
 S SE U A BE SEL RL

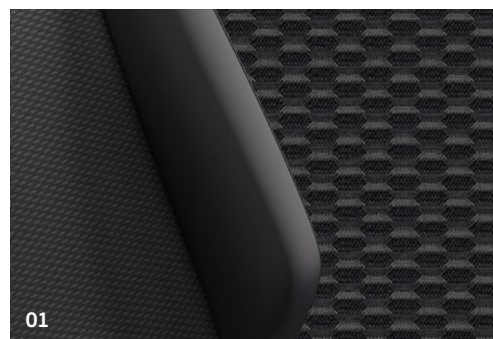
- 01 Pure White Non-Metallic 0Q
- 02 Urano Grey¹ Non-Metallic 5K
- 03 Flash Red Non-Metallic D8
- 04 Reef Blue Metallic 0A
- 05 Energetic Orange Metallic 4M
- 06 Reflex Silver Metallic 8E
- 07 Atlantic Blue Metallic H7
- 08 Limestone Grey Metallic Z1
- 09 Makena Turquoise Metallic Signature 0Z
- 10 Deep Black¹ Pearl Effect 2T

Standard Optional
 S | S SE | SE U | UNITED A | ACTIVE
 BE | Black Edition² SEL | SEL RL | R-Line

Models shown (excluding image 07) are T-Cross SEL with optional 18" 'Koln' Black diamond-turned alloy wheels and Park Assist.
 1 Includes door mirror housings in Black non-metallic finish. 2 Door mirror housings in Black are standard on Black Edition models.

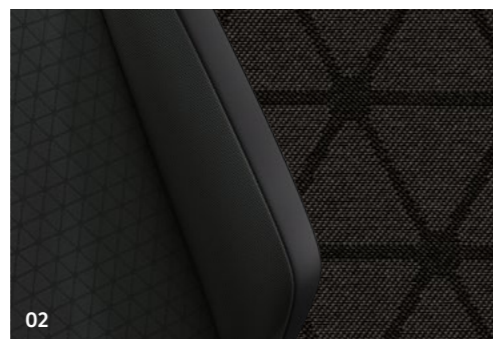
Please note: Colour range is reproduced for illustration purposes only. Actual on-car colours may vary from those shown, as screen technology does allow exact reproduction of the paint colours.

Upholstery and decorative inserts.



01

S



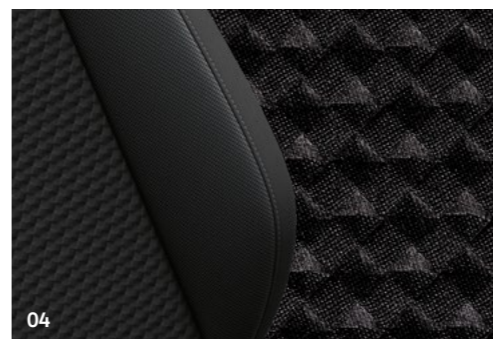
02

SE



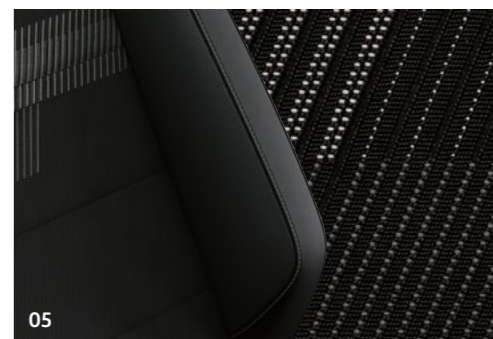
03

U



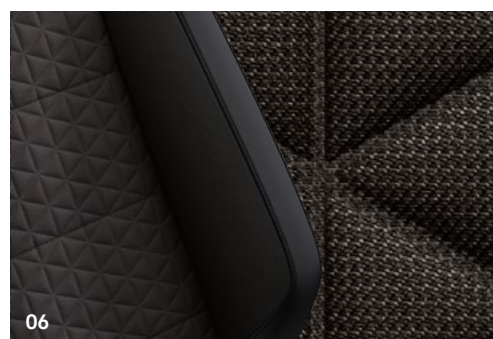
04

A



05

BE



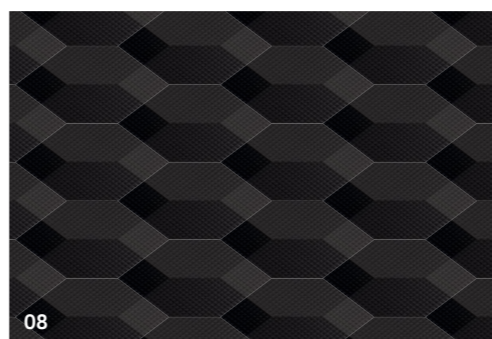
06

SEL



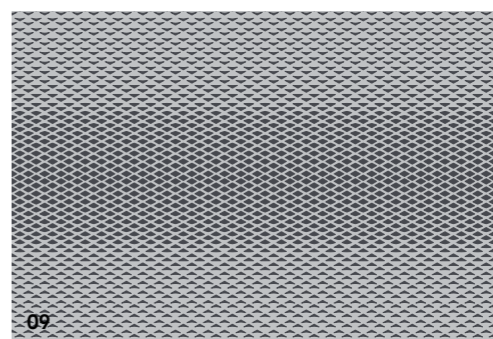
07

RL



08

S



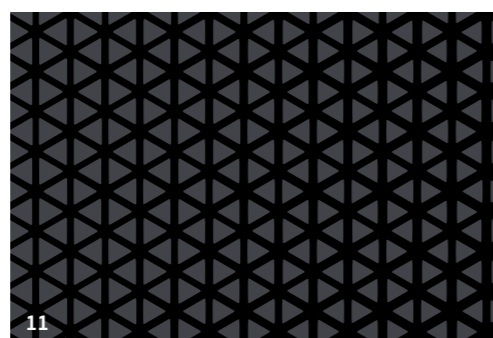
09

SE



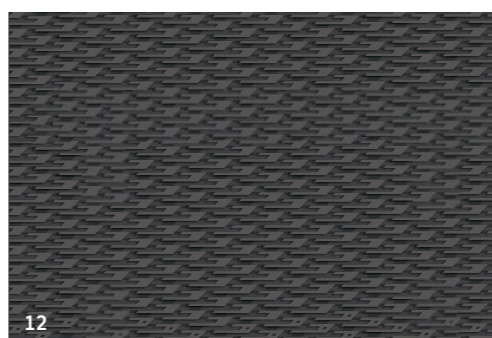
10

BE



11

SEL



12

RL

Upholstery

- 01 'Basket' cloth Titan Black EL
- 02 'Triangle Ties/pearl' cloth Titan Black UL
- 03 'Waveform' cloth Titan Black/Grey/Blue N2Z 13
- 04 'Trapeze' cloth* Titan Black/Steel Grey 24
- 05 'Diag' cloth Neutral/Titan Black UL
- 06 'Hexalink/pearl' cloth Titan Black FL
- 07 'Carbon Flag' cloth Black/Crystal Grey OK

Decorative inserts

- 08 'Softell' 2V
- 09 'Pineapple' Deep Iron/Silver 7AB
- 10 'Transition' High-gloss Black/Platinum Grey 5MC
- 11 'Lizard' Shadow Steel/Black 8DP
- 12 'Race' 7CY
- Atlantic Blue N2Z 13 (Not shown) **U**
- 'Sterlyn' 5TX (Not shown) **A**

Standard
 Optional

S | S SE | SE U | UNITED A | ACTIVE BE | Black Edition SEL | SEL RL | R-Line

* The seat bolster image shown is for fabric reference only and does not represent the actual seat bolster design.
 Please note: Swatches reproduced for illustration purposes only. Actual upholstery and decorative insert colours may vary from those shown, as screen technology does not allow exact reproduction of the upholstery and decorative insert colours.

[Configure now >](#)



Combinations.

	Carpet	Dashboard	Pure White 0Q Non-Metallic*†	Urano Grey 5K Non-Metallic	Flash Red D8 Non-Metallic*	Reef Blue 0A Metallic*	Energetic Orange 4M Metallic*	Reflex Silver 8E Metallic*	Atlantic Blue H7 Metallic*	Limestone Grey Z1 Metallic*	Makena Turquoise 0Z Metallic Signature*	Deep Black 2T Pearl Effect*
'Basket' cloth Standard on S Titan Black EL	Black	'Softell'	●	●	●	●	●	●	-	●	●	●
'Triangle Ties/pearl' cloth Standard on SE Titan Black UL	Black	'Pineapple' Deep Iron/Silver	●	●	●	●	●	●	-	●	●	●
'Waveform' cloth Standard on UNITED Titan Black/Grey/Blue N2Z 13	Black	Atlantic Blue	●	●	●	●	●	●	●	●	●	●
'Trapeze' cloth Standard on ACTIVE Titan Black/Steel Grey 24	Black	'Sterlyn'	●	●	●	●	●	●	-	●	●	●
'Diag' cloth Standard on Black Edition Neutral/Titan Black UL	Black	'Transition' High-gloss Black/Platinum Grey	●	●	●	●	●	●	-	●	●	●
'Hexalink/pearl' cloth Standard on SEL Titan Black FL	Black	'Lizard' Shadow Steel/Black	●	●	●	●	●	●	-	●	●	●
'Carbon Flag' cloth Standard on R-Line Black/Crystal Grey OK	Black	'Race'	●	-	-	●	●	●	-	●	●	●

* Optional at extra cost. † Pure White Non-Metallic paint is standard on R-Line models.

● Standard. - Not available.

Combinations – Design packs*

Alloy wheels	Upholstery 'Diag' cloth	Dashboard	Centre console	Pure White 0Q Non-Metallic*	Urano Grey 5K Non-Metallic	Flash Red D8 Non-Metallic*	Reef Blue 0A Metallic*	Energetic Orange 4M Metallic*	Reflex Silver 8E Metallic*	Limestone Grey Z1 Metallic*	Makena Turquoise 0Z Metallic Signature*	Deep Black 2T Pearl Effect*
Optional on SE												
17" 'Manila' Energetic Orange	Titan Black/Orange/Ceramique (GL)	'Transition' Energetic Orange/Grey	Energetic Orange	<input type="radio"/>	<input type="radio"/>	-	-	<input type="radio"/>	<input type="radio"/>	<input type="radio"/>	-	<input type="radio"/>
17" 'Manila' Bamboo Garden Green	Makena Turquoise/Orange/Platinum Grey (DL)	'Transition' High-gloss Black/Platinum Grey	High-gloss Black/Grey	<input type="radio"/>	<input type="radio"/>	-	-	-	<input type="radio"/>	<input type="radio"/>	<input type="radio"/>	<input type="radio"/>
Optional on SEL												
18" 'Koln' Black	Neutral/Titan Black (UL)	'Transition' High-gloss Black/Platinum Grey	High-gloss Black/Grey	<input type="radio"/>	<input type="radio"/>	<input type="radio"/>	<input type="radio"/>	<input type="radio"/>	<input type="radio"/>	<input type="radio"/>	<input type="radio"/>	<input type="radio"/>
18" 'Koln' Energetic Orange	Titan Black/Orange/Ceramique (GL)	'Transition' Energetic Orange/Grey	Energetic Orange	<input type="radio"/>	<input type="radio"/>	-	-	<input type="radio"/>	<input type="radio"/>	<input type="radio"/>	-	<input type="radio"/>
18" 'Koln' Bamboo Garden Green	Makena Turquoise/Orange/Platinum Grey (DL)	'Transition' High-gloss Black/Platinum Grey	High-gloss Black/Grey	<input type="radio"/>	<input type="radio"/>	-	-	-	<input type="radio"/>	<input type="radio"/>	<input type="radio"/>	<input type="radio"/>

* Optional at extra cost.
 Optional at extra cost. - Not available.

Dimensions.

Exterior dimensions

Length – min./max., mm	4108/4235
Width – excl./inc. door mirrors, mm	1760/1977
Height – max., mm	1584
Height – opened tailgate/floor, mm	2041
Wheelbase, mm	2551
Turning circle, m	10.6

Interior dimensions

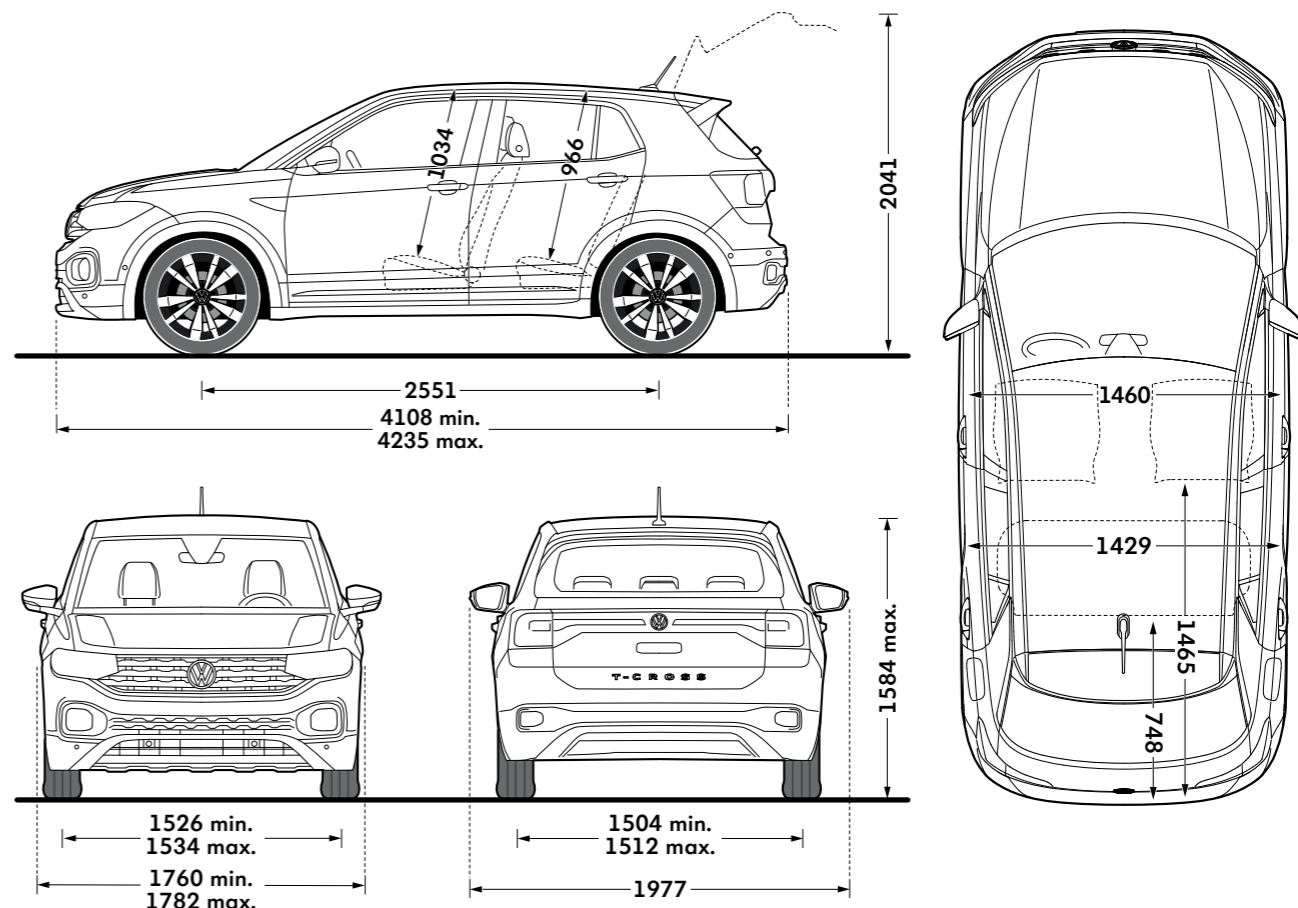
Effective headroom – front, mm	1034
Effective headroom – rear, mm	966
Interior width – front, mm	1460
Interior width – rear, mm	1429

Maximum luggage capacity, litres VDA measuring method using

200 x 100 x 50mm blocks

With rear seats upright and rear bench forward	455
With rear seats folded and rear bench forward	1281

Figures shown are for standard specification models. The addition of certain factory-fitted options and/or accessories may affect some of the dimensions shown.



On illustrations, where arrows and figures are shown inside of the vehicle, the measurements are for interior dimensions. Where arrows and figures are shown outside of the vehicle, the measurements are for exterior dimensions.

Please note: illustrations shown may not necessarily reflect UK specification.

VED and additional 'On the road' costs.

Diesel vehicles that do not meet the RDE2 standard will be charged a supplement on their 'First year rate' to the effect of moving up by one VED (Vehicle Excise Duty) band. The following tables give the rates of vehicle tax on cars registered on or after 1 April 2021. Please refer to the Model Prices pages to confirm which models are RDE2 compliant.

'FIRST YEAR RATE' VED – CARS REGISTERED ON OR AFTER 1.4.2021 BASED ON CO₂ EMISSIONS AND FUEL TYPE

Petrol/Diesel[†] – 'First year rate' VED

CO ₂ emissions (g/km)	Petrol/Diesel [†] VED £	Petrol total 'On the road' costs £
0	0.00	690.00
1-50	10.00	700.00
51-75	25.00	715.00
76-90	115.00	805.00
91-100	140.00	830.00
101-110	160.00	850.00
111-130	180.00	870.00
131-150	220.00	910.00
151-170	555.00	1,245.00
171-190	895.00	1,585.00
191-225	1,345.00	2,035.00
226-255	1,910.00	2,600.00
Over 255	2,245.00	2,935.00

Diesel[‡] – 'First year rate' VED

CO ₂ emissions (g/km)	Diesel [‡] VED £	Diesel total 'On the road' costs £
0	0.00	690.00
1-50	25.00	715.00
51-75	115.00	805.00
76-90	140.00	830.00
91-100	160.00	850.00
101-110	180.00	870.00
111-130	220.00	910.00
131-150	555.00	1,245.00
151-170	895.00	1,585.00
171-190	1,345.00	2,035.00
191-225	1,910.00	2,600.00
226-255	2,245.00	2,935.00
Over 255	2,245.00	2,935.00

Alternative fuel – 'First year rate' VED

CO ₂ emissions (g/km)	Alternative fuel VED £	Alternative fuel total 'On the road' costs £
0	0.00	690.00
1-50	0.00	690.00
51-75	15.00	705.00
76-90	105.00	795.00
91-100	130.00	820.00
101-110	150.00	840.00
111-130	170.00	860.00
131-150	210.00	900.00
151-170	545.00	1,235.00
171-190	885.00	1,575.00
191-225	1,335.00	2,025.00
226-255	1,900.00	2,590.00
Over 255	2,235.00	2,925.00

The way VED (Vehicle Excise Duty) vehicle tax is calculated will change for vehicles that are first registered with the DVLA on, or after, 1 April 2018. All new diesel vehicles registered after 1 April 2018 that do not meet the RDE2 standard will be charged a supplement on their 'First year rate' to the effect of moving up by one VED (Vehicle Excise Duty) band.

If a new vehicle is registered on or after 1 April 2018, after the 'First year rate' VED the majority of vehicles move to the 'Standard rate' of vehicle tax which is £155 a year.

The 'First year rate' will be based on the CO₂ emissions, fuel type and the list price of the vehicle supplied by the Manufacturer or Retailer as applicable on the day before the vehicle is first registered and taxed.

After the 'First year rate', all vehicles with zero emissions will be exempt from the 'Standard rate' of vehicle tax. All petrol and diesel vehicles will pay a standard rate of £155 a year, and alternative fuel vehicles will pay a standard rate of £145 a year.

Petrol or diesel vehicles with a list price over £40,000 at first registration will pay £490 a year, after the first 'First year rate' vehicle tax, for a period of five years. This comprises the £155 'Standard rate' and £335 additional rate. After five years the vehicle tax will revert to the 'Standard rate' of £155 per year.

Alternative fuel vehicles – hybrids, bi-ethanol or LPG, with a list price over £40,000 at first registration will pay £480 a year after the 'First year rate' vehicle tax for a period of five years. This comprises the £145 'Standard rate' and £335 additional rate which reverts to £145 'Standard rate' after five years.

Vehicles with a list price exceeding £40,000 (excluding vehicles with zero emissions) will pay the additional rate of £335 a year for a further five year period, after the 'First year rate' tax. After the five year period these vehicles will pay zero VED tax.

[†] Diesel cars that are tested to RDE2 standards. [‡] Diesel cars, including those tested to RDE standards.

'STANDARD RATE' VED

'Standard rate' VED based on fuel type

Fuel type	CO ₂ emissions (g/km)	'Standard rate' 12 months VED £
Electric/Other	0	0.00
Petrol/Diesel	1 - Over 255	155.00
Alternative	1 - Over 255	145.00

After the 'First year rate', all vehicles with zero emissions will be exempt from the 'Standard rate' of vehicle tax. All petrol and diesel vehicles will pay a standard rate of £155 a year, and alternative fuel vehicles will pay a standard rate of £145 a year.

'STANDARD RATE' – OVER £40,000 RRP

'Standard rate' VED for vehicles over £40,000 list price – five year annual rate

Fuel type	'Standard rate' 12 months VED £	Additional rate £	Total annual payment £
Electric	0.00	0.00	0.00
Petrol/Diesel	155.00	335.00	490.00
Alternative	145.00	335.00	480.00

Petrol or diesel vehicles with a list price over £40,000 at first registration pay £490 a year after the 'First year rate' for a period of five years. Alternative fuel vehicles over £40,000 at first registration – hybrids, bi-ethanol or LPG, pay £480 a year after the 'First year rate' for a period of five years. After five years, vehicles will revert to their 'Standard rate' tax depending on fuel type. Electric or vehicles producing zero emissions over £40,000 at first registration are exempt from any charge after the 'First year rate'.

ADDITIONAL 'OTR' COSTS

Additional 'On the road' costs

Delivery to retailer	509.17
Number plates	20.00
VAT	105.83
Vehicle first registration fee	55.00
Total	690.00

The total 'On the road' costs above for petrol, diesel, electric and alternative fuel vehicles include the applicable 'First year rate' VED charge plus the 'On the road' costs as detailed above.

VAT IS CALCULATED AT 20%. EFFECTIVE FROM 15 APRIL 2021.

Environmental information.

5-DOOR RANGE.		RDE2 Compliant	Fuel	Transmission	Output, PS	CO ₂ emission, g/km ¹ , Min. WLTP test cycle	CO ₂ emission, g/km ¹ , Max. WLTP test cycle	Combined ¹ fuel consumption mpg, Min.	Combined ¹ fuel consumption mpg, Max.	Combined ¹ fuel consumption ltr/100km, Min.	Combined ¹ fuel consumption ltr/100km, Max.
S[‡]	1.0 ltr TSI [‡]	Yes	Petrol	5-spd manual	95	132	133	47.9	48.7	5.9	5.8
SE[‡]	1.0 ltr TSI [‡]	Yes	Petrol	5-spd manual	95	132	134	47.9	48.7	5.9	5.8
	1.0 ltr TSI [‡]	Yes	Petrol	6-spd manual	110	132	135	47.9	48.7	5.9	5.8
	1.0 ltr TSI [‡]	Yes	Petrol	7-spd auto DSG	110	146	148	43.5	44.1	6.5	6.4
	1.0 ltr TSI ^{††}	No	Petrol	6-spd manual	115	137	138	46.3	47.1	6.1	6.0
	1.0 ltr TSI ^{††}	No	Petrol	7-spd auto DSG	115	143	144	44.1	44.8	6.4	6.3
	1.6 ltr TDI [‡]	No	Diesel	5-spd manual	95	136	137	53.3	54.3	5.3	5.2
UNITED^{††}	1.0 ltr TSI [‡]	Yes	Petrol	5-spd manual	95	133	134	47.9	47.9	5.9	5.9
	1.0 ltr TSI [‡]	Yes	Petrol	6-spd manual	110	132	135	47.9	48.7	5.9	5.8
	1.0 ltr TSI [‡]	Yes	Petrol	7-spd auto DSG	110	147	148	43.5	43.5	6.5	6.5
ACTIVE[‡]	1.0 ltr TSI [‡]	Yes	Petrol	5-spd manual	95	132	134	47.9	48.7	5.9	5.8
	1.0 ltr TSI [‡]	Yes	Petrol	6-spd manual	110	132	135	47.9	48.7	5.9	5.8
	1.0 ltr TSI [‡]	Yes	Petrol	7-spd auto DSG	110	146	148	43.5	44.1	6.5	6.4
BLACK EDITION[‡]	1.0 ltr TSI [‡]	Yes	Petrol	5-spd manual	95	132	134	47.9	48.7	5.9	5.8
	1.0 ltr TSI [‡]	Yes	Petrol	6-spd manual	110	132	135	47.9	48.7	5.9	5.8
	1.0 ltr TSI [‡]	Yes	Petrol	7-spd auto DSG	110	145	148	43.5	44.1	6.5	6.4

¹ Figures shown are for comparability purposes; only compare fuel consumption and CO₂ figures with other vehicles tested to the same technical procedures. These figures may not reflect real life driving results, which will depend upon a number of factors including the accessories fitted (post-registration), variations in weather, driving styles and vehicle load. Data correct at 15.4.2021. Figures quoted are for a range of configurations (including non-UK) and are subject to change due to ongoing approvals/changes. For more information, please see www.volkswagen.co.uk/need-help/wltp or consult your authorised Volkswagen retailer.

[‡] These vehicles are WLTP (Worldwide Harmonised Light-Duty Vehicles Test Procedure) type approved vehicles. More information is available at www.volkswagen.co.uk/need-help/wltp.

[†] Please note these models are only available from stock and not available to factory order.

RDE2 refers to Real Driving Emissions Step 2.

EFFECTIVE FROM EFFECTIVE FROM 15 APRIL 2021.

Environmental information.

5-DOOR RANGE.		RDE2 Compliant	Fuel	Transmission	Output, PS	CO ₂ emission, g/km ¹ , Min. WLTP test cycle	CO ₂ emission, g/km ¹ , Max. WLTP test cycle	Combined ¹ fuel consumption mpg, Min.	Combined ¹ fuel consumption mpg, Max.	Combined ¹ fuel consumption ltr/100km, Min.	Combined ¹ fuel consumption ltr/100km, Max.
SEL ‡	1.0 ltr TSI ‡	Yes	Petrol	6-spd manual	110	132	137	47.1	48.7	6.0	5.8
	1.0 ltr TSI ‡	Yes	Petrol	7-spd auto DSG	110	147	150	42.8	43.5	6.6	6.5
	1.0 ltr TSI ‡†	No	Petrol	6-spd manual	115	137	142	44.8	46.3	6.3	6.1
	1.0 ltr TSI ‡†	No	Petrol	7-spd auto DSG	115	144	147	43.5	44.8	6.5	6.3
	1.5 ltr TSI EVO ‡	Yes	Petrol	7-spd auto DSG	150	136	150	42.8	47.1	6.6	6.0
R-LINE ‡	1.0 ltr TSI ‡	Yes	Petrol	6-spd manual	110	136	137	47.1	47.1	6.0	6.0
	1.0 ltr TSI ‡	Yes	Petrol	7-spd auto DSG	110	149	150	42.8	42.8	6.6	6.6
	1.0 ltr TSI ‡†	No	Petrol	6-spd manual	115	141	142	44.8	45.6	6.3	6.2
	1.0 ltr TSI ‡†	No	Petrol	7-spd auto DSG	115	147	147	43.5	43.5	6.5	6.5
	1.5 ltr TSI EVO ‡	Yes	Petrol	7-spd auto DSG	150	138	150	42.8	46.3	6.6	6.1

1 Figures shown are for comparability purposes; only compare fuel consumption and CO₂ figures with other vehicles tested to the same technical procedures. These figures may not reflect real life driving results, which will depend upon a number of factors including the accessories fitted (post-registration), variations in weather, driving styles and vehicle load. Data correct at 15.4.2021. Figures quoted are for a range of configurations (including non-UK) and are subject to change due to ongoing approvals/changes. For more information, please see www.volkswagen.co.uk/need-help/wltp or consult your authorised Volkswagen retailer.

‡ These vehicles are WLTP (Worldwide Harmonised Light-Duty Vehicles Test Procedure) type approved vehicles. More information is available at www.volkswagen.co.uk/need-help/wltp.

† Please note these models are only available from stock and not available to factory order.

RDE2 refers to Real Driving Emissions Step 2.

EFFECTIVE FROM EFFECTIVE FROM 15 APRIL 2021.

CO₂ emissions, BIK % and VED Bands with optional wheels.

Effect of wheel size on CO₂ emissions, BIK % and VED Bands.

Choosing alternative alloy wheels than standard, as an option, may result in different fuel consumption as well as different CO₂ emissions and subsequently an alternative Vehicle Excise Duty (VED) Band, while BIK rates paid by company car drivers may differ. This is due to the fact that different wheels have both alternative aerodynamic drag and mechanical drag, resulting in different rolling resistance and wind resistance. As a result, the VED Band that the vehicle falls into may differ from its original VED Band when fitted with standard size wheels. In some instances, the recommended 'On the road' retail price paid for the vehicle may change as a result of the change in VED rate. The chart below shows CO₂ emissions and the related VED Bands for vehicles with both standard-fit wheels and larger optional alloy wheels, as well as the different cost payable due to a change in VED Band if applicable.

5-DOOR RANGE.			RDE2 Compliant	Output, PS	Standard wheel size	CO ₂ emission, g/km ¹ , WLTP test cycle, standard wheels	First year VED £, standard wheels	BIK % with standard wheel size ²	Optional alloy wheel and size	CO ₂ emission, g/km ¹ , WLTP test cycle, optional alloy wheels	First year VED £, optional wheels	BIK % with optional wheel size ²
S [‡]	1.0 ltr TSI [‡]	5-spd manual	Yes	95	16"	132	220.00	30	N/A	N/A	N/A	N/A
SE [‡]	1.0 ltr TSI [‡]	5-spd manual	Yes	95	17"	132	220.00	30	17" Manila Energetic Orange, 17" Manila Bamboo Garden Green	132	220.00	30
	1.0 ltr TSI [‡]	6-spd manual	Yes	110	17"	132	220.00	30	17" Manila Energetic Orange, 17" Manila Bamboo Garden Green	132	220.00	30
	1.0 ltr TSI [‡]	7-spd auto DSG	Yes	110	17"	146	220.00	33	17" Manila Energetic Orange, 17" Manila Bamboo Garden Green	145	220.00	33
	1.0 ltr TSI ^{††}	6-spd manual	No	115	17"	137	220.00	31	17" Manila Energetic Orange, 17" Manila Bamboo Garden Green	136	220.00	31
	1.0 ltr TSI ^{††}	7-spd auto DSG	No	115	17"	143	220.00	32	17" Manila Energetic Orange, 17" Manila Bamboo Garden Green	142	220.00	32
	1.6 ltr TDI [‡]	5-spd manual	No	95	17"	136	555.00	35	17" Manila Energetic Orange, 17" Manila Bamboo Garden Green	136	555.00	35
UNITED ^{††}	1.0 ltr TSI [‡]	5-spd manual	Yes	95	16"	133	220.00	30	N/A	N/A	N/A	N/A
	1.0 ltr TSI [‡]	6-spd manual	Yes	110	16"	132	220.00	30	N/A	N/A	N/A	N/A
	1.0 ltr TSI [‡]	7-spd auto DSG	Yes	110	16"	147	220.00	33	N/A	N/A	N/A	N/A
ACTIVE [‡]	1.0 ltr TSI [‡]	5-spd manual	Yes	95	17"	132	220.00	30	N/A	N/A	N/A	N/A
	1.0 ltr TSI [‡]	6-spd manual	Yes	110	17"	132	220.00	30	N/A	N/A	N/A	N/A
	1.0 ltr TSI [‡]	7-spd auto DSG	Yes	110	17"	146	220.00	33	N/A	N/A	N/A	N/A

1 Figures shown are for comparability purposes; only compare fuel consumption and CO₂ figures with other vehicles tested to the same technical procedures. These figures may not reflect real life driving results, which will depend upon a number of factors including the accessories fitted (post-registration), variations in weather, driving styles and vehicle load. Data correct at 15.4.2021. Figures quoted are for a range of configurations (including non-UK) and are subject to change due to ongoing approvals/changes. For more information, please see www.volkswagen.co.uk/need-help/wltp or consult your authorised Volkswagen retailer.

2 The BIK charges quoted reflect the charges which apply to vehicles registered after 6 April 2021. These charges may differ from any charges displayed or quoted before 6 April 2021. The BIK % figure quoted includes the 4% diesel supplement, where applicable. Please note: the increase in VED and BIK rate that is payable is in addition to the cost of the optional alloy wheels. Please consult your Volkswagen retailer for full details.

‡ These vehicles are WLTP (Worldwide Harmonised Light-Duty Vehicles Test Procedure) type approved vehicles. More information is available at www.volkswagen.co.uk/need-help/wltp.

† Please note these models are only available from stock and not available to factory order.

VAT IS CALCULATED AT 20%. EFFECTIVE FROM EFFECTIVE FROM 15 APRIL 2021.

CO₂ emissions, BIK % and VED Bands with optional wheels.

Effect of wheel size on CO₂ emissions, BIK % and VED Bands.

Choosing alternative alloy wheels than standard, as an option, may result in different fuel consumption as well as different CO₂ emissions and subsequently an alternative Vehicle Excise Duty (VED) Band, while BIK rates paid by company car drivers may differ. This is due to the fact that different wheels have both alternative aerodynamic drag and mechanical drag, resulting in different rolling resistance and wind resistance. As a result, the VED Band that the vehicle falls into may differ from its original VED Band when fitted with standard size wheels. In some instances, the recommended 'On the road' retail price paid for the vehicle may change as a result of the change in VED rate. The chart below shows CO₂ emissions and the related VED Bands for vehicles with both standard-fit wheels and larger optional alloy wheels, as well as the different cost payable due to a change in VED Band if applicable.

5-DOOR RANGE.			RDE2 Compliant	Output, PS	Standard wheel size	CO ₂ emission, g/km ¹ , WLTP test cycle, standard wheels	First year VED £, standard wheels	BIK % with standard wheel size ²	Optional alloy wheel and size	CO ₂ emission, g/km ¹ , WLTP test cycle, optional alloy wheels	First year VED £, optional wheels	BIK % with optional wheel size ²
BLACK EDITION ‡	1.0 ltr TSI ‡	5-spd manual	Yes	95	17"	132	220.00	30	N/A	N/A	N/A	N/A
	1.0 ltr TSI ‡	6-spd manual	Yes	110	17"	132	220.00	30	N/A	N/A	N/A	N/A
	1.0 ltr TSI ‡	7-spd auto DSG	Yes	110	17"	145	220.00	33	N/A	N/A	N/A	N/A
SEL ‡	1.0 ltr TSI ‡	6-spd manual	Yes	110	17"	132	220.00	30	17" Clayton	132	220.00	30
			Yes	110	17"	132	220.00	30	18" Koln Black, 18" Koln Energetic Orange, 18" Koln Bamboo Garden Green, 18" Nevada Black	135	220.00	31
	1.0 ltr TSI ‡	7-spd auto DSG	Yes	110	17"	147	220.00	33	17" Clayton	146	220.00	33
			Yes	110	17"	147	220.00	33	18" Koln Black, 18" Koln Energetic Orange, 18" Koln Bamboo Garden Green	148	220.00	33
			Yes	110	17"	147	220.00	33	18" Nevada Black	149	220.00	33
	1.0 ltr TSI ‡†	6-spd manual	No	115	17"	137	220.00	31	17" Clayton	137	220.00	31
			No	115	17"	137	220.00	31	18" Koln Black, 18" Koln Energetic Orange, 18" Koln Bamboo Garden Green, 18" Nevada Black	140	220.00	32
			No	115	17"	144	220.00	32	17" Clayton	143	220.00	32
	1.0 ltr TSI ‡†	7-spd auto DSG	No	115	17"	144	220.00	32	18" Koln Black, 18" Koln Energetic Orange, 18" Koln Bamboo Garden Green	145	220.00	33
			No	115	17"	144	220.00	32	18" Nevada Black	146	220.00	33
			No	115	17"	144	220.00	32	18" Nevada Black	146	220.00	33
	1.5 ltr TSI EVO ‡	7-spd auto DSG	Yes	150	17"	136	220.00	31	17" Clayton	136	220.00	31
Yes			150	17"	136	220.00	31	18" Nevada Black	138	220.00	31	
Yes			150	17"	136	220.00	31	18" Koln Black, 18" Koln Energetic Orange, 18" Koln Bamboo Garden Green	139	220.00	31	

1 Figures shown are for comparability purposes; only compare fuel consumption and CO₂ figures with other vehicles tested to the same technical procedures. These figures may not reflect real life driving results, which will depend upon a number of factors including the accessories fitted (post-registration), variations in weather, driving styles and vehicle load. Data correct at 15.4.2021. Figures quoted are for a range of configurations (including non-UK) and are subject to change due to ongoing approvals/changes. For more information, please see www.volkswagen.co.uk/need-help/wltp or consult your authorised Volkswagen retailer.

2 The BIK charges quoted reflect the charges which apply to vehicles registered after 6 April 2021. These charges may differ from any charges displayed or quoted before 6 April 2021. The BIK % figure quoted includes the 4% diesel supplement, where applicable.

Please note: the increase in VED and BIK rate that is payable is in addition to the cost of the optional alloy wheels. Please consult your Volkswagen retailer for full details.

‡ These vehicles are WLTP (Worldwide Harmonised Light-Duty Vehicles Test Procedure) type approved vehicles. More information is available at www.volkswagen.co.uk/need-help/wltp.

† Please note these models are only available from stock and not available to factory order.

VAT IS CALCULATED AT 20%. EFFECTIVE FROM EFFECTIVE FROM 15 APRIL 2021.

CO₂ emissions, BIK % and VED Bands with optional wheels.

Effect of wheel size on CO₂ emissions, BIK % and VED Bands.

Choosing alternative alloy wheels than standard, as an option, may result in different fuel consumption as well as different CO₂ emissions and subsequently an alternative Vehicle Excise Duty (VED) Band, while BIK rates paid by company car drivers may differ. This is due to the fact that different wheels have both alternative aerodynamic drag and mechanical drag, resulting in different rolling resistance and wind resistance. As a result, the VED Band that the vehicle falls into may differ from its original VED Band when fitted with standard size wheels. In some instances, the recommended 'On the road' retail price paid for the vehicle may change as a result of the change in VED rate. The chart below shows CO₂ emissions and the related VED Bands for vehicles with both standard-fit wheels and larger optional alloy wheels, as well as the different cost payable due to a change in VED Band if applicable.

5-DOOR RANGE.													
			RDE2 Compliant	Output, PS	Standard wheel size	CO ₂ emission, g/km ¹ , WLTP test cycle, standard wheels	First year VED £, standard wheels	BIK % with standard wheel size ²	Optional alloy wheel and size		CO ₂ emission, g/km ¹ , WLTP test cycle, optional alloy wheels	First year VED £, optional wheels	BIK % with optional wheel size ²
R-LINE[†]	1.0 ltr TSI [‡]	6-spd manual	Yes	110	18"	136	220.00	31	N/A		N/A	N/A	N/A
	1.0 ltr TSI [‡]	7-spd auto DSG	Yes	110	18"	149	220.00	33	N/A		N/A	N/A	N/A
	1.0 ltr TSI ^{††}	6-spd manual	No	115	18"	141	220.00	32	N/A		N/A	N/A	N/A
	1.0 ltr TSI ^{††}	7-spd auto DSG	No	115	18"	147	220.00	33	N/A		N/A	N/A	N/A
	1.5 ltr TSI EVO [‡]	7-spd auto DSG	Yes	150	18"	138	220.00	31	N/A		N/A	N/A	N/A

1 Figures shown are for comparability purposes; only compare fuel consumption and CO₂ figures with other vehicles tested to the same technical procedures. These figures may not reflect real life driving results, which will depend upon a number of factors including the accessories fitted (post-registration), variations in weather, driving styles and vehicle load. Data correct at 15.4.2021. Figures quoted are for a range of configurations (including non-UK) and are subject to change due to ongoing approvals/changes. For more information, please see www.volkswagen.co.uk/need-help/wltp or consult your authorised Volkswagen retailer.

2 The BIK charges quoted reflect the charges which apply to vehicles registered after 6 April 2021. These charges may differ from any charges displayed or quoted before 6 April 2021. The BIK % figure quoted includes the 4% diesel supplement, where applicable. Please note: the increase in VED and BIK rate that is payable is in addition to the cost of the optional alloy wheels. Please consult your Volkswagen retailer for full details.

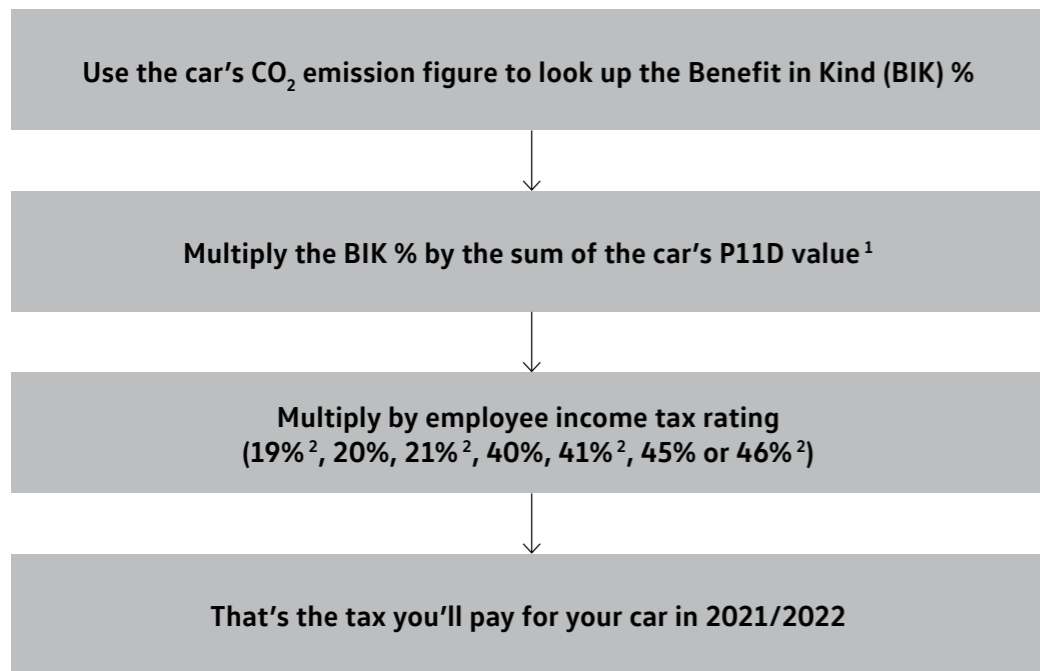
‡ These vehicles are WLTP (Worldwide Harmonised Light-Duty Vehicles Test Procedure) type approved vehicles. More information is available at www.volkswagen.co.uk/need-help/wltp.

† Please note these models are only available from stock and not available to factory order.

VAT IS CALCULATED AT 20%. EFFECTIVE FROM EFFECTIVE FROM 15 APRIL 2021.

Company car taxation chart – tax year 2021/22.

How to calculate your company car income tax liability – effective 6.4.2021



The government is retaining the diesel supplement in company car tax until 2021, when EU-wide testing procedures will ensure new diesel cars meet air quality standards even under strict 'real world' driving conditions. In the 2017 Autumn Budget the Chancellor announced that there will be a new VED supplement on new diesel cars first registered from 1 April 2018 adding 4% to their appropriate percentage if the car is propelled solely by diesel (up to a maximum of 37%), so that their First-Year Rate will be calculated as if they were in the VED band above. However, this will not apply on those diesel cars which meet Real Driving Emissions Step 2 (RDE2) standards.

For further details of company car tax, please consult your authorised Volkswagen retailer, or visit www.volkswagen.co.uk/offers-and-finance/fleet/calculators/company-car-tax-calculator. Full details can be found at www.assets.publishing.service.gov.uk/government/uploads/system/uploads/attachment_data/file/815268/190617_-_WLTP_-_summary_of_responses_v2.2.pdf

1 P11D values given in this price list are based on standard specification models with no factory-fitted options or other accessories. If your car includes factory-fitted options or other accessories, you may need to adjust the P11D value to take this into account.
 2 From 6 April 2018, new income tax rates have been introduced for Scottish Taxpayers, these figures reflect the new Scottish rates. For full details of Scottish BIK tax liability, please refer to the [Benefit In Kind for Scottish Residents section](#)

Emissions CO ₂ (g/km)	2021/22 Benefit in Kind % (BIK)				2022/23 and 2023/24 Benefit in Kind % (BIK)			
	Petrol and Diesel RDE2	Diesel RDE	Electric range, miles	Alternative fuel	Petrol and Diesel RDE2	Diesel RDE	Electric range miles	Alternative fuel
0 (BEV)								
1-50	13%	17%	130 or above	1%	14%	18%	130 or above	2%
1-50	13%	17%	70-129	4%	14%	18%	70-129	5%
1-50	13%	17%	40-69	7%	14%	18%	40-69	8%
1-50	13%	17%	30-39	11%	14%	18%	30-39	12%
1-50	13%	17%	1-29	13%	14%	18%	1-29	14%
51-54	14%	18%		14%	15%	19%		15%
55-59	15%	19%		15%	16%	20%		16%
60-64	16%	20%		16%	17%	21%		17%
65-69	17%	21%		17%	18%	22%		18%
70-74	18%	22%		18%	19%	23%		19%
75-79	19%	23%		19%	20%	24%		20%
80-84	20%	24%		20%	21%	25%		21%
85-89	21%	25%		21%	22%	26%		22%
90-94	22%	26%		22%	23%	27%		23%
95-99	23%	27%		23%	24%	28%		24%
100-104	24%	28%		24%	25%	29%		25%
105-109	25%	29%		25%	26%	30%		26%
110-114	26%	30%		26%	27%	31%		27%
115-119	27%	31%		27%	28%	32%		28%
120-124	28%	32%		28%	29%	33%		29%
125-129	29%	33%		29%	30%	34%		30%
130-134	30%	34%		30%	31%	35%		31%
135-139	31%	35%		31%	32%	36%		32%
140-144	32%	36%		32%	33%	37%		33%
145-149	33%	37%		33%	34%	37%		34%
150-154	34%	37%		34%	35%	37%		35%
155-159	35%	37%		35%	36%	37%		36%
160-164	36%	37%		36%	37%	37%		37%
165-169	37%	37%		37%	37%	37%		37%
170+	37%	37%		37%	37%	37%		37%

Taxable percentage of P11D value (Diesel RDE figures include the 4% diesel supplement)

Company car taxation comparison.

3-year taxation comparison guide.

T-CROSS.			RDE2 Compliant	Output, PS	CO ₂ emission, g/km ¹ WLTP test cycle	Basic Recommended Retail £	VAT £	Total Recommended Retail £	Tax year commencing	P11D Value £ ²	BIK % ³	Annual cost at 20% ⁴ tax rate £	Annual cost at 40% ⁴ tax rate £
SE ‡	1.0 ltr TSI ‡	5-spd manual	Yes	95	132	16,354.17	3,270.83	19,625.00	2021/22	20,260.00	30	1,215.60	2,431.20
									2022/23	20,260.00	31	1,256.12	2,512.24
									2023/24	20,260.00	31	1,256.12	2,512.24
R-LINE ‡									2021/22	25,015.00	31	1,550.93	3,101.86
	1.0 ltr TSI ‡	6-spd manual	Yes	110	136	20,316.67	4,063.33	24,380.00	2022/23	25,015.00	32	1,600.96	3,201.92
									2023/24	25,015.00	32	1,600.96	3,201.92

1 Figures shown are for comparability purposes; only compare fuel consumption and CO₂ figures with other vehicles tested to the same technical procedures. These figures may not reflect real life driving results, which will depend upon a number of factors including the accessories fitted (post-registration), variations in weather, driving styles and vehicle load. Data correct at 15.4.2021. For more information, please see www.volkswagen.co.uk/need-help/wltp or consult your authorised Volkswagen retailer.

2 P11D value = Total recommended retail price + delivery to retailer £509.17, + number plates £20, + VAT £105.83 (calculated by reference to total of delivery to retailer + number plates). P11D value is based on standard specification model with no factory-fitted options or other accessories.

3 The BIK charges quoted reflect the charges which apply to vehicles registered after 6 April 2021. These charges may differ from any charges displayed or quoted before 6 April 2021. The BIK % figure quoted includes the 4% diesel supplement, where applicable. Please consult your Volkswagen retailer for full details.

4 From 6 April 2018, new income tax rates have been introduced for Scottish Taxpayers. For full details of Scottish BIK tax liability, please refer to the [Benefit In Kind for Scottish Residents section](#)

‡ These vehicles are WLTP (Worldwide Harmonised Light-Duty Vehicles Test Procedure) type approved vehicles. More information is available at www.volkswagen.co.uk/need-help/wltp.

All examples are for manual derivatives unless otherwise stated.

RDE2 refers to Real Driving Emissions Step 2.

Volkswagen UK may change RRP's at any time (this includes where there are government changes in regulation and/or legislation). There may be a delay to any RRP displaying correctly on our materials. Always obtain prices from your chosen authorised Volkswagen retailer.

VAT IS CALCULATED AT 20%. EFFECTIVE FROM EFFECTIVE FROM 15 APRIL 2021.

Volkswagen service.

Configure now >



VOLKSWAGEN FINANCE¹

Volkswagen Finance specialises in providing funding solutions for Volkswagen drivers. Whether your Volkswagen is for private or business use, you can choose from a range of funding options.

Solutions – a Personal Contract Plan

Flexible finance plan designed to allow you to drive a new vehicle sooner than you think. At the end of your agreement you can choose to trade in your Volkswagen for a new one, keep it, or hand it back.

Hire Purchase

A simple and straightforward way to finance your Volkswagen. Have the option to break down your monthly payments over a period that suits you, making financing your car much more manageable than you think.

Contract Hire

Available for both personal and business customers. Ideal for customers simply wanting to pay a monthly rental for the vehicle, change it on a regular fixed period and have no disposal risk.

- Lease Purchase
- Finance Lease

With all Volkswagen Finance products you can choose a fixed-cost maintenance plan to help you budget for your servicing and maintenance costs. Buy your service plan online or visit your local Volkswagen retailer for more information.



VOLKSWAGEN INSURANCE²

We want you to start enjoying your new car from day one, and thanks to our complimentary five day Volkswagen Drive Away Insurance you can. Please visit www.insurewithvolkswagen.co.uk/driveaway to activate your cover. If eligible, we will also give you a quotation for our annual insurance, designed specifically for Volkswagen drivers.

ANNUAL CAR INSURANCE

Volkswagen car insurance helps give you peace of mind with the following benefits at no extra cost:

- Repairs carried out by Volkswagen trained technicians using Volkswagen Genuine Parts and paints when repaired by a Volkswagen approved repairer
- Guaranteed courtesy car
- Child seat replacement
- Uninsured driver promise
- Vandalism promise
- 24 hour accident recovery

For more information or to get a quote, visit www.insurewithvolkswagen.co.uk

SERVICING AND MAINTENANCE

Volkswagen is pleased to offer you a choice on how your Volkswagen is serviced. The appropriate selection is entirely dependent on how the car is likely to be driven and its general use. To help you identify which type of service would be most suitable, please refer to the following guide.

Fixed Service

The Fixed Service is recommended for vehicles that will cover less than 9,300 miles in 12 months and if the vehicle is likely to be used in the following way:

- Predominantly urban driving, short journeys with frequent cold starts.
- Activities regularly producing high engine loading, e.g. frequent hill climbs, driving with vehicle fully loaded and towing.
- Uneconomical driving style using high rpms with heavy acceleration and heavy braking.

The service intervals for the Fixed Service schedule on 2021 MY onwards are as follows:

- Oil change service – After 1 year or 9,300 miles (15,000 km), whichever is soonest.
- Inspection service³ – First after 2 years or 18,600 miles (30,000 km), then every 2 years or 18,600 miles (30,000 km), whichever is soonest.



SERVICING AND MAINTENANCE (CONTINUED)

Flexible Service

The Flexible Service is recommended for vehicles with daily mileage of more than 25 miles where the vehicle is driven regularly mainly on longer distance journeys. The vehicle is driven mainly at a constant speed with minimum vehicle and engine loading, minimal towing and driven in an economical manner. With the Flexible Service the vehicle can drive up to 18,600 miles⁴ (30,000 km) or 2 years, whichever is soonest, between oil changes.

The service intervals for the Flexible Service schedule on 2021 MY onwards are as follows:

- Oil change service – According to flexible service interval display, 2 years or 18,600 miles (30,000 km), whichever is soonest.
- Inspection service³ – First after 2 years or 18,600 miles (30,000 km), then every 2 years or 18,600 miles (30,000 km), whichever is soonest.

The up! model is only available with the Fixed Service schedule. Flexible Servicing is not available on BEV, PHEV or GTE models. Please consult your authorised Volkswagen retailer or repairer for advice and full details.

Please note: If you purchase a Volkswagen Fixed Price Service Plan your vehicle will follow the Fixed Service schedule.

VOLKSWAGEN ENSURANCE⁵

Get three years' Volkswagen Insurance cover for free.

Another great benefit of being a Volkswagen driver. If your Volkswagen was damaged in an accident, wouldn't you want it fixed by a Volkswagen trained technician using only Genuine Volkswagen Parts? Insurance is Volkswagen's accident and repair cover which does exactly that. It works alongside your main comprehensive motor insurance policy no matter who you are insured with, to make sure you get the quality repair and service you would want. If you're involved in an accident or your car is stolen, just one call to us and we'll look after your claim from start to finish, ensuring your Volkswagen is restored to the highest standard.

Activate your cover and benefit from:

- A guarantee that your Volkswagen will be repaired by a Volkswagen approved repairer and Volkswagen trained technicians, using only Genuine Volkswagen Parts and paints.
- A dedicated Claims Manager who will manage your claim from start to finish, liaising with your insurer and the repairer so you don't have to.
- Help to recover any uninsured losses using our Legal Expenses Cover.
- Online claims tracking so you can keep up to date with the status of any claim.

Volkswagen Insurance is free to all Volkswagen customers for three years and it only takes a minute to get cover.

To find out more and to activate your cover, visit www.insurewithvolkswagen.co.uk/insurance

The T-Cross

Model prices

Standard equipment

Driver's assistance systems

Factory-fitted options

Design packs

Accessories

Alloy wheels

Paint

Upholstery and decorative inserts

Combinations

Dimensions

VED and additional 'On the road' costs

Environmental information

CO₂ emissions, BIK % and VED Bands with optional wheels

Company car taxation chart and comparison

Volkswagen service and service plan

Volkswagen service (continued).

WARRANTY

Exclusions and terms and conditions apply to all warranties, plans and insurance listed. For pricing and further details of Volkswagen Warranties, Service Plans and Insurance, please consult your authorised Volkswagen retailer or repairer, or visit www.volkswagen.co.uk

THE VOLKSWAGEN WARRANTY THREE-YEAR WARRANTY

All Volkswagen passenger cars come with a three-year/60,000 miles warranty, which protects your car against the failure of most technical and electrical components due to manufacturing defects. This comprises a two-year manufacturer's warranty with unlimited mileage plus a further one-year/60,000 miles (whichever is soonest) Retailer Warranty¹. Should the mileage exceed 60,000 miles within the first two years, the manufacturer's two-year warranty will still be valid. Full details of the three-year warranty are available from your authorised Volkswagen retailer or repairer.

BODY PROTECTION WARRANTY

The internal body sections and panels are covered against rusting through from the inside for 12 years. Naturally, the vehicle must be cared for in compliance with the manufacturer's operating instructions. Please consult your authorised Volkswagen retailer or repairer for full warranty details.

THREE-YEAR PAINTWORK WARRANTY

This latest paintwork warranty, pioneered by Volkswagen, provides you with cover on a new car. Naturally, during the warranty period the car must be cared for in compliance with the manufacturer's operating instructions. Any paintwork defects, as a result of the manufacturing process, will be rectified without charge.

APPROVED ACCESSORIES

A comprehensive range of accessories from alloy wheels to carpet mats is available to complement the factory-fitted option list. Volkswagen approved accessories purchased from and fitted by your authorised Volkswagen retailer at the point of vehicle sale will also benefit from the three-year vehicle warranty.

VOLKSWAGEN ROADSIDE ASSISTANCE

Every new car is registered for Volkswagen Roadside Assistance for one year except the Touareg which is registered for three years. This provides vehicle roadside and home recovery in the unlikely event of a breakdown in the UK and Europe (subject to conditions). Volkswagen Roadside Assistance can also be purchased for subsequent years.

Exclusions and terms and conditions apply. For pricing and further details of Volkswagen Roadside Assistance, please consult your authorised Volkswagen retailer, or visit www.volkswagen.co.uk



PRICES AND SPECIFICATIONS

The prices and specifications contained in this price list are for information purposes only as our products are continually updated and changes may be made to the prices and specifications at any time. If you require any specific feature, please consult your authorised Volkswagen retailer who is regularly updated with any change in specification. Prices and specifications are subject to change without notice.

Following the announcement of a price increase, any vehicle order which can be accepted into the factory production system before the effective date of the price increase will be supplied at the current price, even if built and delivered after the date on which the increase became effective.

Note: We would like to advise you that telephone calls to Volkswagen Customer Care may be monitored and recorded as part of our training and quality assurance processes. All our monitoring and recording processes meet Ofcom regulations.

BENEFIT IN KIND (BIK) FOR SCOTTISH RESIDENTS

Effective as of 6 April 2018, the Scottish Government introduced their own BIK taxation structure. This is only applicable to Company Car Drivers that are resident Scottish taxpayers. HMRC will continue to be responsible for the collection and management of taxes and will determine whether or not an individual is a Scottish taxpayer based on where their primary place of residence is.

Scottish Income Tax rates and Bands 2018/19

- Starter rate 19% over £11,850 - £13,850
- Basic rate of 20% over £13,850 - £24,000
- Intermediate rate 21% over £24,000 - £44,273
- Higher rate 41% over £44,273 - £150,000
- Top rate 46% above £150,000

FUEL CONSUMPTION AND CO₂ EMISSIONS

Fuel consumption and CO₂ figures are obtained under standardised EU test conditions (Directive 93/116/EEC). This allows a direct comparison between different manufacturer models but may not represent the actual fuel consumption achieved in 'real world' driving conditions. More information is available on the Volkswagen website at www.volkswagen.co.uk and at www.dft.gov.uk/vca. The weight of a vehicle will influence the level of CO₂ emissions it produces; as a result, vehicles with higher levels of specification and factory-fitted options may emit higher levels of CO₂. Choosing larger alloy wheels than those fitted as standard may result in increased fuel consumption as well as higher CO₂ emissions and subsequently an increased Vehicle Excise Duty (VED) band. BIK rates paid by company car drivers may also increase. In some instances, the recommended 'On the road' retail price paid for a vehicle may increase as a result of the increased VED rate. CO₂ is the main greenhouse gas responsible for global warming. The specifications contained in this brochure are for information purposes only and are subject to change.



¹ All warranty work must be completed by an authorised Volkswagen retailer or repairer.

Volkswagen service plan.

An additional way to keep your perfect car, perfect for longer.

Exclusions and terms apply, [please click here](#) for more details. For pricing and further details of the Volkswagen Service Plan, please consult your authorised Volkswagen retailer or visit www.volkswagen.co.uk

Volkswagen Service Plan – retail sales only

We offer Volkswagen Service Plans to cover all new models for their first two consecutive services in line with the Fixed Service schedule required on the vehicle. Your car will be in the hands of Volkswagen trained technicians who use specialist Volkswagen tools, technology and Volkswagen original parts, and all parts and labour are guaranteed for two years. What's more, the Volkswagen Service Plan will remain with the vehicle should you decide to sell your car.

Volkswagen Service Plan – retail sales only For vehicles under 1 year old set to the Fixed Service regime that has not had its first service, comprising first two manufacturer's scheduled services:

- 'Oil service' including oil filter change
- 'Oil service' including oil filter change and 'Inspection service' plus a pollen filter replacement (if required)

Excludes electric vehicles. Service plan covers first two consecutive services, limited to 1x 'Oil service' and 1x 'Oil and Inspection service'. T&Cs apply: All vehicles must be set to the Fixed Service regime by the retailer. Maximum age of car is 12 months (Service plan must be taken out before first service is due). Additional work, including wear and tear is excluded. Servicing must be carried out in line with the requirement of the Service Schedule. All work must be carried out by an Authorised Volkswagen Repairer. Offers may be varied or withdrawn at any time. Plan validity is dependent on required payments received. Administered by Volkswagen Financial Services. Retail sales only. For pricing and further details, please consult your authorised Volkswagen retailer or visit www.volkswagen.co.uk



Model shown is T-Cross R-Line with optional metallic paint.

The T-Cross

Issued by Volkswagen Marketing, Volkswagen (UK)
© Volkswagen Group United Kingdom Limited 2021
Issue: 15 April 2021.

Volkswagen Information Service
Telephone: 0800 333 666
Internet: www.volkswagen.co.uk

Volkswagen Fleet Business Centre
Telephone: 0800 0093 397
Internet: www.volkswagen.co.uk/offers-and-finance/fleet

This brochure can be viewed or downloaded in pdf format at:
www.volkswagen.co.uk

Prices, specifications, features, technical and other information (including fuel consumption, CO₂ emissions and range) are updated regularly and are subject to change without notice (this may include changes between order and delivery). There may be a delay in updates to our materials – always consult your authorised Volkswagen retailer for the latest information.



facebook.com/VolkswagenUK



[@UKVolkswagen](https://twitter.com/@UKVolkswagen)



youtube.com/user/ukvolkswagen



volkswagen_uk