



**ADVENTURE 2021**  
**ACCESSORIES CATALOGUE**

# MAKE YOUR HONDA TRULY YOURS

What better way to make your Honda truly yours than adding Honda Genuine Accessories? For extra luggage capacity, improved comfort, rugged protection, enhanced performance or just a better looking bike, we've got everything covered. Built with the same attention to detail as your Honda, supported by a 2-year warranty\*, our accessories will perfectly suit your bike, adding to its value. Ask your local Honda dealer how to make your Honda Adventure bike truly yours.



## CONTENTS



CRF1100L AFRICA TWIN ADVENTURE SPORTS	04
CRF1100L AFRICA TWIN	16
X-ADV <b>NEW</b>	28
NC750X <b>NEW</b>	36
CB500X	44
CRF300L / RALLY <b>NEW</b>	52

\*2-year warranty only applicable on genuine accessories. Special conditions apply to accessories developed with Honda partners. Ask your local Honda dealer for more information.



## ACCESSORIES

### CRF1100L AFRICA TWIN



## ADVENTURE SPORTS

### DID YOU KNOW?

*Honda NXR750 Paris-Dakar*

The NXR750 dominated the Paris-Dakar Rally from 1986 to 1989, winning the trophy 4 years in a row. Back then, the 22 day race started in Paris and ended in Dakar in Senegal, crossing nearly 15,000km of African desert. Gilles Lalay won the 1989 Paris-Dakar Rally on this motorcycle with its distinct Rothmans design.





**42 LITRE ALUMINIUM TOP BOX KIT**  
**08ESY-MKS-LGALU**

Made of strong and light aluminium, this 42 litre top box can store one full face helmet and much more. It comes with a backrest and the Honda 1-Key System.

It can be installed directly onto the rear carrier of the Africa Twin Adventure Sports.

Maximum load weight: 6 kg



**58 LITRE PLASTIC TOP BOX WITH BACK REST AND BASE**  
**08ESY-MKS-LGPL**

With a large capacity of 58 litres, this plastic top box can store two full-face helmets and much more.

A special lock secures the lid without using the key. It comes with a Backrest, Honda 1-Key System and the base to fit directly the standard rear carrier of Adventure Sports. Maximum load weight: 6 kg

Also available with specific Africa Twin logo design (see Design section on page 12).



**EASY 35 LITRE TOP BOX PACK**  
**08ESY-MKS-LG35**

35 litre Top Box suitable for one helmet. The Honda 1-Key System allows the top box to be operated using the main ignition key.



**INNER BAGS FOR PLASTIC LUGGAGE**  
**08L81-MKS-E00**

Inner Bag specifically designed to fit the 58 litre Plastic Top Box. It is fully waterproof and equipped with straps which also allow it to be attached directly to the motorcycle. A shoulder strap makes it easy to carry.

**08L83-MKS-E00**

Inner bag specifically designed to fit Plastic Panniers. Same specifications as the plastic top box inner bag.

## LUGGAGE



**ALUMINIUM PANNIERS SET**  
**08ESY-MKS-PNALU**

Made of strong and light aluminium, this set includes 2 panniers presenting a capacity of 33 litres on the right side and 37 litres on the left.

Includes an aluminium stay, the Honda 1-Key System and fits directly to the rear carrier of the Africa Twin Adventure Sports.

Maximum load weight for each pannier: 10 kg



**PLASTIC PANNIERS SET**  
**08L71-MKS-E00**

Specifically designed for a stay-less installation, this set of 2 panniers are suitable for adventure touring thanks to their highly durable shell. The right side pannier has a capacity of 30 litres and with 40 litre capacity on the left side, it can accommodate a full face helmet. Both panniers are equipped with a security lock and the Honda 1-Key System. Maximum load capacity per panniers: 6 kg

Also available with specific Africa Twin logo design (see Design section on page 12).



**INNER BAGS FOR ALUMINIUM LUGGAGE**  
**08L82-MKS-E00**

Inner Bag specifically designed to fit the Aluminium Top Box. It is fully waterproof and equipped with straps which also allow it to be attached directly to the motorcycle. A shoulder strap makes it easy to carry.

**08L84-MKS-E00**

Set of 2 inner bags specifically designed to fit the right and the left aluminium panniers. Same specifications as the top box inner bags.



### INNER BAG FOR 35 LITRE TOP BOX

**08L75-MJP-G51**

Black nylon bag with embroidered silver Honda wing logo on the top and red zippers. Expandable from 15 to 25 litres. Comes with adjustable shoulder strap and carrying handle.



### 4.5 LITRE TANK BAG

**08L85-MKS-E00**

Thanks to its transparent pocket, this waterproof Tank Bag is the perfect solution to store a smartphone and connect it to the USB port of the motorcycle (depending on smartphones specifications / connectors not included). A one-touch buckle and a magnet keep this Tank Bag firmly attached to the bike.

- Capacity: 4.5 litres
- Maximum load weight: 1.5 kg



### 3 LITRE TANK BAG

**08L89-MKS-E00**

This light and compact Tank Bag features a transparent pocket and it's ideal to store small personal items. Unnoticeable while steering the bike, this Tank Bag is firmly attached thanks to a one-touch buckle and a magnet. A rain cover is included.

- Capacity: 3 Litres
- Maximum load weight: 1.5 kg



### FRONT LED FOG LIGHTS KIT

**08ESY-MKS-FL20**

Set of 2 additional LED headlights (11W) with all necessary components for fitment to the front side pipe (not included). Provides increased visibility for the rider and makes them more noticeable to surrounding traffic. Operated directly with the handlebar switch and signalled on the TFT monitor when activated.



### VISOR SET

**08R73-MKS-E20**

Specially designed for Adventure Sport models, these visors improve the comfort by reducing the travelling air around the rider's arms and shoulders. CRF logo branded.



### DEFLECTORS SET

**08R71-MKS-E20**

The deflector improves comfort by reducing traveling air around the rider's waist and knees.

## LUGGAGE



## COMFORT



### LOW SEATS

**08R73-MKS-E00ZB or E00ZC**

The Low Seats reduce the seat height by 25mm. Depending on the position selected, the result is a seat height of 825 or 845mm.

Seats are colour matching with the unit:

- Tricolour version (E00ZB)
- Black version (E00ZC)



### HIGH SEAT

**08R70-MKS-E20ZB**

The High Seats increase the seat height by 25mm. Depending on the position selected, the result is a seat height of 875 or 895mm.



### COMFORT PILLION STEPS SET

**08R71-MJP-G50**

Deluxe pillion footpegs made of aluminium and rubber. They are wider than the standard pegs and provide increased comfort for a pillion.



**FRONT SIDE PIPE WITH ATTACHMENT**  
**08ESY-MKS-L2FR**  
 Providing a strong Adventure look, the Front Side Pipe improves the protection of various body panels. Made of stainless steel and finished with electrolytic polishing, it is resistant to corrosion and easy to clean. (Attachment included).

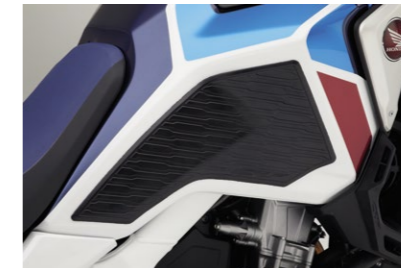


**ENGINE GUARD WITH ATTACHMENT**  
**08ESY-MKS-ENG**  
 The Engine Guard improves protection of the engine and the lower part of the bike. Made of stainless steel and finished with electrolytic polishing, it is resistant to corrosion and easy to clean.

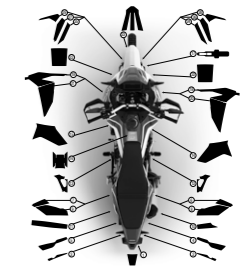


**RADIATOR GRILLS**  
**08F71-MKS-E00**  
 Made of stainless steel and displaying a CRF logo, the Radiator Grills increase the African Twin's tough image. The original mesh pattern combines cooling capability with protection against stone damage for the radiators.

## PROTECTION



**SIDE TANK PADS**  
**08R75-MKS-E20**  
 Featuring a CRF logo, these reinforced pads are specifically designed to fit the tank sides shape. They protect the paint against scratches and give the rider better control when in a standing position.



**PROTECTIVE STICKERS SET**  
**08ZAR-LOD-004CFSP**  
 Improve the protection of the body and the engine parts with this set of die-cut stickers.



**RALLY STEPS SET**  
**08R79-MKS-E00**

With their aggressive spike shape and a 57% larger surface area than the standard ones, these rally steps improve control during off-road riding.



**DCT PEDAL SHIFT**  
**08U70-MKS-E50**

This kit enables the rider to change gear in the traditional 1 down - 5 up format by using the left foot. It works alongside the handlebar shift triggers giving the rider the choice of using either of them at any moment. (For DCT Version only).



**QUICKSHIFTER**  
**08U70-MKK-D01**

The quickshifter enables the rider to change gear without operating the clutch lever or shutting off the throttle. The system works for upshifting and downshifting, maximising the riding experience. (For Manual Transmission version only).

## PERFORMANCE & DESIGN



**WHEEL STRIPES SET**  
**08F70-MKS-E20ZE or E20ZD**

Available in 2 colours to match the different versions of the Adventure Sports, these wheel stripes improve the design and add some protection to the rims. Each set includes 2 pieces for each wheel. Recommended application:

- Tricolour version (E20ZD)
- Black version (E20ZE)



**58 LITRE TOP BOX WITH STICKERS**  
**08ZAR-LOD-001GTOP**

Improve the design of your Top Box by adding this exclusive sticker kit for Africa Twin. Top Box comes with sticker kit already applied.



**PLASTIC PANNIERS WITH STICKERS**  
**08ZAR-LOD-002GPAN**

Improve the design of your panniers by adding this exclusive sticker kit for Africa Twin. Panniers supplied with stickers already applied.



**MAIN STAND**  
**08M70-MKS-E00**

The Main Stand allows secure parking on a variety of ground surfaces and assists with maintenance operations.





## ACCESSORIES PACKS

CONTENT	SUPER PACK ALU*	SUPER PACK PLASTIC*	TRAVEL PACK ALU*	TRAVEL PACK PLASTIC*
	08HME-MKS-L2FLAL	08HME-MKS-L2FLPL	08HME-MKS-L2TRALU	08HME-MKS-L2TRPL
42 Litre Aluminium Top-Box with base	•		•	
Aluminium Panniers Set with Stay	•		•	
Inner Bag for Aluminium Top Box	•		•	
Aluminium Panniers Inner Bags Set	•		•	
58 Litre Plastic Top Box with back rest and base		•		•
Plastic Panniers Set		•		•
Inner Bag for 58 Litre Top Box		•		•
Inner Bags for Plastic Panniers		•		•
4.5 Litre Tank bag	•	•	•	•
Front LED Fog Lights Kit	•	•		
Deflectors Set	•	•	•	•
Visors Set	•	•	•	•
Radiator Grills	•	•		
Front Side Pipe with attachment	•	•	•	•
Engine Guard with attachment	•	•		
Main Stand	•	•	•	•

\*Compatible with DCT or MT versions



# Africa Twin



## ACCESSORIES CRF1100L



---

## AFRICA TWIN

**DID YOU KNOW?** *Africa Twin reaches new heights*

In 2017, the Africa Twin broke the record for the highest altitude reached by a twin-cylinder motorcycle. After 5 days of acclimatisation, a team of 5 riders piloted the Africa Twin onto the slopes of the world's highest active volcano, the Nevado Ojos del Salado - located between Argentina and Chile. Reaching 5,965 metres above sea level, the international team completed its ascent within 24 hours with an Africa Twin specially equipped with Termignoni exhaust, revised final sprockets, new Metzeler MC360TM tyres and a range of Honda genuine accessories. Their route took them - in temperatures as low as minus 5 degrees Celsius - through broken asphalt, gravel, mud, sand and finally stretches of ice pockets known as 'penitentes', underlining once again the Africa Twin's credentials as the best-performing off-road motorcycle in its class.



Africa  
Twin



**42 LITRE ALUMINIUM TOP-BOX WITH BASE**

**08ESY-MKS-LGALUL1**

Made of strong and light aluminium, this 42 litre top box can store one full face helmet. It Comes equipped as standard with a backrest and the one-key system. Aluminium rear carrier and top box base are included.

Maximum load weight: 6 kg



**58 LITRE PLASTIC TOP BOX WITH BACK REST AND BASE**

**08ESY-MKS-LGPLL1**

With a large capacity of 58 litres this plastic top box can store two full face helmets and much more. A special lock allows the rider to secure the lid without using the key. Rear carrier, top box base, backrest and Honda 1-Key System are included.

Maximum load weight: 6 kg



**EASY 35 LITRE TOP BOX PACK**

**08ESY-MKS-LG35**

35 litre Top Box suitable for one helmet. The Honda 1-Key System allows the top box to be operated using the main ignition key.



**INNER BAG FOR 58 LITRE PLASTIC TOP BOX**

**08L81-MKS-E00**

Inner Bag specifically designed to fit the 58 litre Plastic Top Box. It is fully waterproof and equipped with straps which also allow it to be attached directly to the motorcycle. A shoulder strap makes it easy to carry.

## LUGGAGE



**ALUMINIUM PANNIERS SET**

**08ESY-MKS-PNALU**

Made of strong and light aluminium, this set includes 2 panniers presenting a capacity of 33 litres on the right side and 37 litres on the left.

Includes an aluminium stay, the Honda 1-Key System and fits directly to the rear carrier of the Africa Twin (sold separately).

Maximum load weight for each pannier: 10 kg



**PLASTIC PANNIERS SET**

**08L71-MKS-E00**

Specifically designed for a stay-less installation, this set of 2 panniers are suitable for adventure touring thanks to their highly durable shell. The right side pannier has a capacity of 30 litres and with 40 litre capacity on the left side, it can accommodate a full face helmet. Both panniers are equipped with a security lock and the Honda 1-Key System.

Rear carrier and panniers bracket not included

Maximum load capacity per panniers: 6 kg



**INNER BAG FOR PLASTIC PANNIER**

**08L83-MKS-E00**

Specifically designed to fit. Same specifications as the plastic top box inner bag.



### INNER BAG FOR 35 LITRE TOP BOX

**08L75-MJP-G51**

Black nylon bag with embroidered silver Honda wing logo on the top and red zippers. Expandable from 15 to 25 litres. Comes with adjustable shoulder strap and carrying handle.



### 4.5 LITRE TANK BAG

**08L85-MKS-E00**

Thanks to its transparent pocket, this waterproof Tank Bag is the perfect solution to store a smartphone and connect it to the USB port of the motorcycle (depending on smartphones specifications / connectors not included). A one-touch buckle and a magnet keep this Tank Bag firmly attached to the bike.

- Capacity: 4.5 litres
- Maximum load weight: 1.5 kg



### 3 LITRE TANK BAG

**08L89-MKS-E00**

This 3 litre Tank Bag features a transparent pocket and it's ideal to store small personal items. Unnoticeable while steering the bike, this Tank Bag is firmly attached thanks to a one-touch buckle and a magnet. A rain cover is included.

Maximum load weight: 1.5 kg



### FRONT SIDE PIPE WITH ATTACHMENT

**08ESY-MKS-L1FR**

Providing a strong Adventure look, the Front Side Pipe improves the protection of various body panels. Made of stainless steel and finished with electrolytic polishing, it is resistant to corrosion and easy to clean. It can be used to mount the Front LED Fog Lights (sold separately).



### ENGINE GUARD WITH ATTACHMENT

**08ESY-MKS-ENG**

The Engine Guard improves the protection of the engine and the lower part of the bike. Made of stainless steel and finished with electrolytic polishing, it is resistant to corrosion and easy to clean.



### RADIATOR GRILLS

**08F71-MKS-E00**

Made of stainless steel and displaying a CRF logo, the Radiator Grills increase the African Twin's tough image. The original mesh pattern combines cooling capability with protection against stone damage for the radiators.

## LUGGAGE



### INNER BAGS FOR ALUMINIUM LUGGAGE

**08L82-MKS-E00**

Inner Bag specifically designed to fit the Aluminium Top Box. It is fully waterproof and equipped with straps which also allow it to be attached directly to the motorcycle. A shoulder strap makes it easy to carry.

**08L84-MKS-E00**

Set of 2 inner bags specifically designed to fit the right and the left aluminium panniers. Same specifications as the top box inner bags.



### REAR CARRIER & PANNIER BRACKET

**08L88-MKS-E00ZA**

Rear Carrier made of light aluminium with pillion grips for increased comfort. The included brackets allow the plastic panniers to be mounted directly to the carrier. For the Aluminium panniers, an additional stay is needed (sold separately).

## PROTECTION



### SIDE TANK PADS

**08R81-MKS-E00**

Featuring a CRF logo, these reinforced pads are specifically designed to fit the tank sides shape. They protect the paint against scratches and give the rider better control when in a standing position.



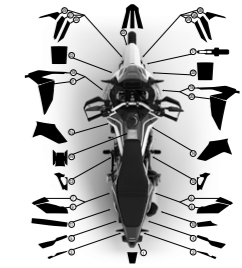
### KNUCKLE GUARD EXTENSION

**08P72-MKS-E00ZC OR E00ZD**

These extended knuckle guards improve rider comfort and provide additional protection to hands.

Recommended applications:

- Tricolour or Black model: E00ZC
- Red model: E00ZD



### PROTECTIVE STICKERS SET

**08ZAR-LOD-003CFSP**

Improve the protection of the body and the engine parts with this set of die-cut stickers.



# COMFORT



## HIGH WINDSCREEN 08R76-MKS-E00

Taller than the standard screen by 175 mm, this High Windscreen improves the rider's comfort by reducing the airflow around the head and the arms. It replaces directly the standard windscreen and comes with a meter visor.



## VISOR SET 08R78-MKS-E00

These visors improve the comfort by reducing the travelling air around the rider's arms and shoulders. CRF logo branded.



## DEFLECTORS SET 08R72-MKS-E00

The deflectors improve comfort by reducing travelling air around the rider's waist and knees.



## FRONT LED FOG LIGHTS KIT 08ESY-MKS-FL20

Set of 2 additional LED headlights (11W) with all necessary components for fitment to the front side pipe (not included). Provides increased visibility for the rider and makes them more noticeable to surrounding traffic. Operated directly with the handlebar switch and signalled on the TFT monitor when activated.



## HEATED GRIPS WITH ATTACHMENT 08T72-MKS-E00

The 5 temperature levels of these slim heated grips are displayed on the TFT monitor. When the ignition is switched off, the last position is memorised. An integrated circuit protects the battery from draining.



## 12V SOCKET 08U70-MKS-E00

Installed on the control panel, this 12V Socket is ideal to power or charge electrical equipment.



## LOW SEAT 08R73-MKS-E00ZA or E00ZC

The Low Seat reduces the seat height by 25mm. Depending on the position selected on the motorcycle, the result is a seat height of 825 or 845mm.

- Recommended applications:
- Red model: E00ZA
  - Tricolour model: E00ZB
  - Black model: E00ZC



## HIGH SEAT 08R70-MKS-E20ZB or E20ZC

The High Seats increase the seat height by 25mm. Depending on the position selected on the motorcycle, the result is a seat height of 875 or 895mm.

- Recommended applications:
- Black model: E20ZB
  - Red model: E20ZC



## COMFORT PILLION STEPS SET 08R71-MJP-G50

Deluxe pillion footpegs made of aluminium and rubber. They are wider than the standard pegs and provide increased comfort for a pillion.



### RALLY STEPS SET

08R79-MKS-E00

With their aggressive spike shape and a 57% larger surface area than the standard ones, these rally steps improve control during off-road riding.



### DCT PEDAL SHIFT

08U70-MKS-E50

This kit enables the rider to change gear in the traditional 1 down - 5 up format by using the left foot. It works alongside the handlebar shift triggers giving the rider the choice of using either at any point. (For DCT version only).



### QUICKSHIFTER

08U70-MKK-D01

The quickshifter enables the rider to change gear without operating the clutch lever or shutting off the throttle. The system works for upshifting and downshifting, maximising the riding experience. (For Manual Transmission version only).

## PERFORMANCE & DESIGN



### SMOKED WINDSCREEN

08R70-MKS-E00

Add to the front end style of your Africa Twin with this smoked windscreen that directly replaces the standard version (same shape).



### WHEEL STRIPES SET

08F70-MKS-E00ZD or E40ZA

These Wheel Stripes improve the design and add some protection to the rims. Each set includes 2 pieces for each wheel. Recommended application:

- For Red or Black versions: E00ZD
- For Tricolour version: E40ZA



### MAIN STAND

08M70-MKS-E00

The Main Stand allows secure parking on a variety of ground surfaces and assists with maintenance operations.





*Africa  
Twin*

## ACCESSORIES PACKS

CONTENT	OFF-ROAD DCT	OFF-ROAD MT	SUPER PACK ALU	SUPER PACK PLASTIC	ELECTRIC	TRAVEL PACK ALU	TRAVEL PACK PLASTIC
	See below for the Part Numbers		08HME-MKS-L1FLALU	08HME-MKS-L1FLPL	08HME-MKS-EL20	08HME-MKS-L1TRALU	08HME-MKS-L1TRPL
Radiator Grills	•	•					
Side Tank pads	•	•					
Front Side Pipe with attachment	•	•	•	•		•	•
Engine Guard with attachment	•	•					
Rally Steps Set	•	•					
DCT Pedal Shift	•						
Quick Shifter		•					
Smoke Wind Screen	•	•					
Wheel Stripes set (in matching colours)	•	•					
Knuckle Guards (in matching colours)	•	•					
Rear Carrier			•	•		•	•
42 Litre Aluminium Top-Box with base			•			•	
Aluminium Panniers Set with Stay			•			•	
Inner Bag for Aluminium Top Box			•			•	
Aluminium Panniers Inner Bags Set			•			•	
58 Litre Plastic Top Box with back rest and base				•			•
Plastic Panniers Set				•			•
Inner Bag for 58-Litre Top Box				•			•
Inner Bag for Plastic Panniers				•			•
4.5 Litre Tank bag			•	•		•	•
Front LED Fog Lights with attachment			•	•	•		
Heated Grips with attachment			•	•	•		
12V Socket			•	•	•		
High Wind Screen			•	•			
Deflectors Set			•	•			
Visor Set			•	•			
Main Stand			•	•		•	•
<b>Red Versions</b>	08HME-MKS-L1RDCT	08HME-MKS-L1RMT					
<b>Black Versions</b>	08HME-MKS-L1BDCT	08HME-MKS-L1BMT					
<b>Tricolour Versions</b>	08HME-MKS-L1TDCT	08HME-MKS-L1TMT					

# X-ADV



## ACCESSORIES X-ADV



**NEW  
MODEL**

**DID YOU KNOW?** *Tougher than the rest!*

*During the 2019 Gibraltar Race, a 7,000-km all-terrain rally from Baltic Sea to Atlantic Ocean, Renato Zocchi steered an X-ADV to the Class 2 victory. This placed him in seventh overall for the event, beating out the competition of purpose-built dirt bikes and adventure tourers. While his X-ADV was specially prepared with extra wheel travel and ground clearance, Zocchi kept the standard footboards and simply used 'Gravel' mode on the DCT settings. Further proof that no matter where you want to go, the X-ADV is tougher than the rest to get you there!*



X-ADV



## LUGGAGE



### 50 LITRE SMART TOP BOX 08ESY-MKT-TB50S

50 litre Top Box with SMART Opener system allows the top box to be operated without having to insert a key. The built-in key cylinder can be used to lock the top box even when it is removed from the carrier. A backrest is included to improve passenger comfort.

Rear carrier and Aluminium Panel sold separately.

Maximum load capacity: 6 kg



### ALUMINIUM TOP BOX PANEL 08L83-MKT-D00

Give your 50 litre Top Box the final touch with this Aluminium design panel (top box sold separately).



### 50 LITRE TOP BOX INNER BAG 08L81-MKS-E00

Inner Bag specifically designed to fit the 50 litre Top Box. It is waterproof and equipped with straps that also allow it to be attached directly to your X-ADV. A shoulder strap is also provided allowing the bag to be carried easily.



### PANNIER SET WITH STAY 08ESY-MKT-PNA

Set of 2 panniers with a 26 litre capacity on the right side and 33 litres on the left. The Honda 1-Key System allows operation of the panniers using the main motorcycle key.

Rear carrier and Aluminium Panels sold separately.

Maximum load capacity (each side): 6 kg



### ALUMINIUM PANNIERS PANELS 08L80-MKT-D00

Give your panniers the final touch with these Aluminium design panels (panniers sold separately).

### PANNIER INNER BAG SET 08L78-MKT-D00

Set of two inner bags that perfectly match the shape of the panniers. Available in black with a discrete Honda signature, these inner bags come with a shoulder strap making them easy to carry.



### CONSOLE BAG 08L79-MKT-D00

Perfectly fitting the space between the rider's knees, this Black 9 litre Console Bag is ideal for carrying your everyday essentials. Convenient slot on the front for smartphone wires. Rain cover included.

Maximum load capacity: 2 kg



### 25 LITRE INNER BAG FOR TOP BOX 08L77-MKT-D00

Top Box inner bag providing 25 litres of storage capacity and featuring the Honda logo. Easy to carry thanks to the provided shoulder strap.



### ALUMINIUM REAR CARRIER 08L74-MKT-D00ZC

Rear Carrier with grips that improve passenger comfort. Suitable for all sizes of top box.

Maximum load capacity: 10 kg





### FRONT FOG LIGHTS WITH ATTACHMENTS

**08ESY-MKT-FL21**

These two additional LED Fog Lights provide increased visibility for the rider and makes them more noticeable to surrounding traffic.

Operated with the left handlebar switch, a signal appears on the TFT monitor when the lights are switched on.

Must be mounted onto the Front Side Pipes (sold separately).



### LEG DEFLECTORS SET

**08R71-MKT-D00**

Featuring the X-ADV logo, the deflector set improves rider comfort by reducing air flow around the waist and thigh areas.



### HEATED GRIPS KIT

**08T71-MKT-D00**

The 5 temperature levels of these slim heated grips are displayed on the TFT monitor. When the ignition is switched off, the last position is memorised. An integrated circuit protects the battery from draining.



### PARKING LEVER

**08F70-MKT-D00**

With its Anodised Black treatment, this Aluminium Parking Lever will make your X-ADV to stand out.

### PARKING LEVER COVER

**08F72-MKT-D00**

Perfectly matching the aluminium lever, this lever cover will give your X-ADV a distinctive touch.



## COMFORT



### FRONT SIDE PIPES

**08P70-MKH-D00**

Set of silver Side Pipes that protects the X-ADV's body and provide a mount for the Front Fog Lights (sold separately).



### RIDER STEPS SET

**08R72-MKT-D00**

Improve your control while riding off-road and give your X-ADV the ultimate Adventure look with the Aluminium Rider Steps Set.



### KNUCKLE GUARD EXTENSIONS

**08P72-MKS-E00ZC or E00ZD**

Fitted to the standard knuckle guards, these extensions provide additional protection and comfort by reducing the airflow around the hands.

2 colours available:

- Black (E00ZC)
- Red (E00ZD)



### ALUMINIUM HANDLEBAR HOLDER

**08F71-MKT-D00**

Aluminium Handlebar holder featuring the X-ADV logo that reinforces the premium look of your X-ADV.



### LATERAL COVERS SET

**08F75-MKT-D00**

Stainless steel covers protect body panels from damage while maximising the premium appearance of X-ADV.



### FLOOR PANELS

**08F70-MKH-D00**

Made of stainless steel with anti-slip pads and featuring the X-ADV logo, these floor panels will add to the durability of your X-ADV.



## ACCESSORIES PACKS

CONTENT	TRAVEL	STYLE	ADVENTURE	
	08HME-MKT-TRA21	08HME-MKT-STY	BLACK 08HME-MKT-ADTZB	RED 08HME-MKT-ADTZC
50 Litre Top Box with Smart Lid Opener	•			
Aluminium Panel for Top Box	•			
Back Rest for Top Box	•			
Panniers Set with Key Systems	•			
Aluminium Panels for Panniers	•			
Rear Carrier	•			
Panniers Stay	•			
Console Bag	•			
Inner Bags for Panniers	•			
Heated Grips	•			
Handlebar Holder		•		
Parking Lever		•		
Parking Lever Cover		•		
Lateral Covers		•		
Floor Panels		•		
Knuckle Guards Extensions Black *NH1*			•	
Knuckle Guards Extensions Red *R280R*				•
Front Side Pipe			•	•
Front LED Fog Lights with attachment			•	•
Legs Deflectors Set			•	•
Riders Steps Set			•	•

NC750X



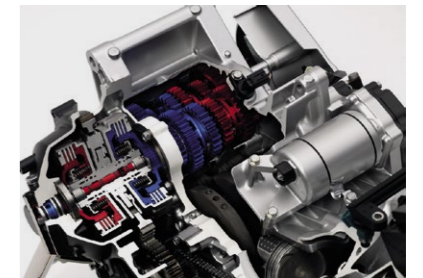
## ACCESSORIES NC750X



**NEW  
MODEL**

*Do you really need a left lever to enjoy riding?*

The Dual Clutch Transmission made its worldwide debut for motorbikes in 2010 with the Honda VFR1200F. Now entering its 3<sup>rd</sup> generation and downsized to suit mid-displacement bikes, the DCT is completely different from the belt-type transmissions used by most scooters: it is structurally a conventional 6-speed gear ratio transmission, yet electronically controlled when changing speeds. Keep the fun of a manual transmission; enjoy the comfort of an automatic one!



NC750 X



### 50 LITRE TOP BOX

**08L73-MKT-D00**

50 Litre Top Box with the capacity to hold two helmets. The built-in key cylinder can be used to lock the top box even when it is removed from the carrier. Must be mounted with the rear carrier and Top Box Rubber Pad (sold separately).

Maximum load capacity: 6 kg



### ALUMINIUM TOP BOX PANEL

**08L83-MKT-D00 / 08L82-MKT-D00Zx**

Give your 50 litre Top Box a classy touch with this Aluminium design panel (top box sold separately).

Also available in body matched colours

- Candy Chromosphere Red (D00ZA)
- Matt Jeans Blue Metallic (D00ZC)
- Graphite Black (D00ZG)
- Matt Beta Silver Metallic (D00ZJ)



### REAR CARRIER

**08L70-MKW-D00ZB**

The rear carrier is required to fit the luggage items specifically designed for the NC750X. Two handles have also been integrated to improve pillion comfort.

Maximum load capacity: 10 kg

## LUGGAGE



### 50 LITRE TOP BOX RUBBER PAD

**08L85-MKT-D00**

Designed to match the 50 litre Top Box, this backrest is made for passenger comfort. Easy fitment with no drilling required.



### INNER BAG FOR 50 LITRE TOP BOX

**08L81-MKS-E00**

Made of a robust fabric, this inner bag features reflective strips and the Honda logo. It is waterproof and equipped with straps that also allow it to be attached directly to your bike. A shoulder strap is also provided allowing the bag to be carried easily.

See also page 31 for the 25 litre Inner Bag.



### 35 LITRE TOP BOX

**08ESY-MKT-TB35OK**

35L Top Box which can accommodate one helmet. The Honda 1-Key System allows the top box to be operated using the main ignition key.

Maximum load capacity: 6 kg

Rear Carrier sold separately.



### PANNIER SET WITH STAY

**08ESY-MKW-PNA**

Set of two panniers to match the design of the NC750X. The Honda 1-Key System allows the panniers to be operated using the main ignition key. The included pannier stay fits directly onto the rear carrier (sold separately).



### ALUMINIUM PANELS FOR PANNIERS

**08L80-MKT-D00 / 08L81-MKT-D00Zx**

Give your panniers a premium touch with this set of aluminium design panels. (Panniers sold separately). Also available in body matched colours:

- Candy Chromosphere Red (D00ZE)
- Mat Jeans Blue Metallic (D00ZF)
- Graphite Black (D00ZG)
- Matte Beta Silver Metallic (D00ZH)



### PANNIER INNER BAGS SET

**08L78-MKT-D00**

Set of two inner bags that perfectly match the shape of the panniers. Featuring a discrete Honda logo and complete with a shoulder strap for easy carrying.



### HIGH WINDSCREEN

**08R70-MKW-D00**

The High Windscreen is 77mm higher than the standard screen and reduces the air pressure felt by the rider around the head and arms. Made of strong clear polycarbonate, it is a direct replacement for the standard screen.



### HEATED GRIPS

**08T70-MKW-D00**

Extremely slim heated grips with smart heat allocation and a 5-level controller for maximum comfort. An integrated circuit protects the battery from draining. The last level selected is memorised when the bike's ignition is switched off.



### FOOT DEFLECTOR SET (DCT)

**08R70-MKW-D10**

This set of Deflectors improves comfort by reducing the air pressure felt by the rider. MT version also available (08R71-MKW-D00)

## LUGGAGE



### 35 LITRE TOP BOX INNER BAG

**08L75-MJP-G51**

Black nylon Inner Bag featuring red zips and an embroidered Honda Wing logo that is expandable from 15L to 25L. Features both carrying handles and a shoulder strap allowing the to be carried easily.



### TOP BOX BACKREST

**08F00-MJP-G50**

Designed to match the 35 litre Top Box, this backrest improves passenger comfort. Easy fitment with no drilling required. (Top Box sold separately).

## COMFORT



### FRONT SIDE PIPE

**08P71-MKW-D00**

The Front Side Pipe provides protection to exterior panels in case of contact and enhances the tough adventure styling of the NC750X. Required to fit the Front Fog Lights (sold separately).



### FRONT LED FOG LIGHTS WITH ATTACHMENTS

**08ESY-MKW-FL21**

This set of two LED Fog lights Increases rider visibility and makes the rider more noticeable to surrounding traffic. Must be combined with the Front Side Pipe (sold separately).



### USB CHARGER

**08E73-MKW-D00**

Conveniently located in the luggage compartment, this Type-C USB charger provides 15W and allows you to power your electronic devices.



**MAIN STAND**  
08M70-MKW-D00

The Main Stand allows secure parking on a variety of ground surfaces and assists with maintenance operations.



**U-LOCK 123/217**  
08M53-MEE-800

U-Lock with tamper-resistant barrel key.

## SECURITY & MAINTENANCE



NC750X

## ACCESSORIES PACKS

PACKS	TRAVEL	URBAN	ADVENTURE	
	08HME-MKW-TR21	08HME-MKW-URB	DCT 08HME-MKW-ADTDCT	MT 08HME-MKW-ADTMT
50 Litre Top Box with Key system	•	•		
Aluminium Panel for Top Box	•	•		
Back Rest for Top Box	•	•		
Panniers Set with Key Systems	•			
Aluminium Panels for Panniers	•			
Panniers Stay	•			
Rear Carrier	•	•		
High Wind Screen	•	•		
Heated Grips			•	•
Front Led Fog Lights			•	•
Front Side Pipe			•	•
USB Charger			•	•
Foot Deflectors (DCT)			•	
Foot Deflectors (MT)				•
Main Stand	•	•		

500X

## ACCESSORIES CB500X



### DID YOU KNOW?

*Pro-Link: from motocross to MotoGP race tracks*

Brought to Motocross enthusiasts for the first time in 1981, the Pro-Link rear mono-shock system patented by Honda is applied to many production models such as the CB500X but can also be found on the RC213V MotoGP race bike.



500X



**REAR CARRIER**  
**08L71-MGZ-D80ZA**

Sturdy rear carrier with integrated pillion grab rails.  
Not compatible with the pannier stay.



**35 LITRE TOP BOX**  
**08ESY-MJX-TBWK**

35 litre Top Box designed to be operated with your CB500X ignition key. This pack includes the rear carrier and the base needed to mount the top box on the bike, as well as the key system.



**PLASTIC PANNIER SET**  
**08L70-MGZ-D80**

Set of two aerodynamically shaped panniers specifically designed to fit the CB500X. Stay and key system sold separately.



**FULL LUGGAGE KIT**  
**08ESY-MKP-FL21**

Equip your CB500X for long haul travel with this kit including the 35 litre Top Box, the panniers with their design panels, key cylinders and mounting system.

## LUGGAGE



**35 LITRE TOP BOX INNER BAG**  
**08L09-MGS-D30**

Black Nylon inner bag expandable from 15L to 25L featuring the Honda Wing logo on the front pocket. Includes carrying handle and shoulder strap for easy carrying.



**TANK BAG**  
**08ESY-MKP-TKB19B**

Small bag specially designed to fit the CB500X tank. The bag has 2 magnetic flaps and 2 removable straps. The kit includes 2 sets of pan-head screws, collars and plain washers and 2 adhesive protective films to protect the tank against scratches. Volume: 3 litres.



**REAR SEAT BAG WITH ATTACHMENT**  
**08ESY-MKP-SEAT**

A simple and functional rear bag specifically adapted to the tapered shape of the rear seat. Easy attachment and stable mounting thanks to the attachment provided. Capacity of 15 litres that can be expanded to 22 litres. Rain cover included.





### FRONT LED FOG LIGHTS KIT

**08ESY-MKP-FOG19**

This set of two LED Fog lights Increases rider visibility and makes the rider more noticeable to surrounding traffic. Kit also includes the Front Side Pipe and Fog Light attachment providing everything required to fit the Fog lights to the CB500X.



### HEATED GRIP SET

**08ESY-MKP-HG19**

Slim heated grips with integrated control unit providing 360° heat around the grips. Features 3-step variable heating levels and an integrated circuit to protect the battery from draining. Attachment and special heat-resistant cement included.



### 12V SOCKET

**08U70-MKP-D80**

12V Power Socket allows you to power or charge electrical equipment directly from the bike.



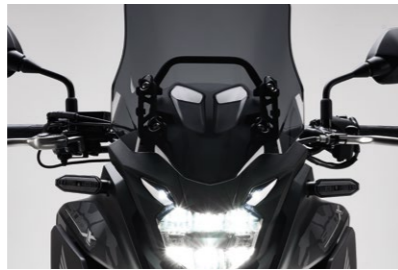
## COMFORT



### KNUCKLE GUARDS

**08P70-MJW-J80**

This pair of knuckle guards will deflect wind & rain away from the rider's hands and increase comfort.



### SMOKED WINDSCREEN

**08R70-MKP-J80**

The smoked windscreen will help give your CB500X a sporty look. Size and shape are identical to the standard clear windscreen.



### DEFLECTOR KIT

**08R71-MKP-J80**

A set of Black deflectors that help to shield the rider's legs from the wind. Left and Right deflectors included.

## PROTECTION



### FRONT SIDE PIPE

**08P72-MKP-J80ZA**

Helps Improve protection of the CB500X while also providing a mounting point for the Front LED Fog Lights (sold separately).



### TANK PAD

**08P70-MGH-J20**

Helps to protect the tank from scratches.



**500X**



**MAIN STAND KIT**

**08M70-MKP-J80**

The Main Stand allows secure parking on a variety of ground surfaces and assists with maintenance operations.



**OUTDOOR CYCLE COVER (XL)**

**08P34-BC2-801**

Protects paintwork against U.V. rays. Water-resistant breathable fabric that allows the bike to dry while covered. Features a rope to tighten the cover and avoid fluttering. Two holes in the front lower area allow for a U-Lock to be easily fitted while the bike is covered. Not suitable for bikes with top box and/or panniers installed.

# MAINTENANCE

## ACCESSORIES PACK

**CONTENT**

**COMFORT**

**08HME-MKP-CX19**

Knuckle Guards

•

Deflectors

•

Heated Grips

•

12V Accessory Socket

•

Main Stand

•

**CRF**  
300 RALLY



## ACCESSORIES

# CRF300L / CRF300 RALLY



**NEW  
MODEL**

*You've got the look and a bit more*

When you see the images of the Honda riders racing for victory in the Dakar Rally, it's easy to spot the direct lineage between their CRF450 Rally and your CRF300.

It's not only a matter of appearance but the ultimate proof that what is developed during the toughest races, can benefit everybody.





**35 LITRE TOP BOX KIT**

**08E5Y-K1T-TB38**

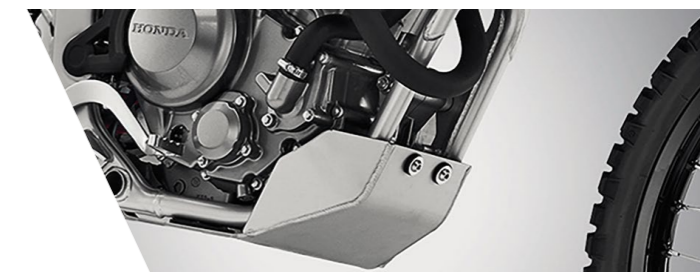
35 litre Top Box able to accommodate one helmet. The Honda 1-Key System allows the top box to be operated using the main ignition key. Kit includes 35L Top Box, Top Box Base, Key System and Rear Carrier. All components can be sold separately.



**35 LITRE TOP BOX INNER BAG**

**08L75-MJP-G51**

Black nylon Inner Bag featuring red zips and an embroidered Honda Wing logo that is expandable from 15L to 25L. Features both carrying handles and a shoulder strap allowing the bag to be carried easily.



**SKID PLATE**

**08P70-K1T-E50**

Made of 4mm thick aluminium, the Skid Plate improves the protection of the engine and the lower part of the bike. It is resistant to corrosion and easy to clean.

(Only applicable on CRF300L)



The specific details of this brochure do not apply to any particular product supplied or offered for sale. Manufacturers reserve the right to vary specifications, including colours, with or without notice at such times in such manner as deemed appropriate. Major as well as minor changes may be involved. Every effort, however, is made to ensure the accuracy of the particulars contained in this brochure. Consult your Dealer for details regarding the specifications of any featured product. This publication shall not constitute - under any circumstances whatsoever - an offer by the Company to any individual. All sales are made by the Distributor or Dealer subject to and with the benefit of the standard Conditions of Sale and Warranty provided by the Distributor or Dealer, copies of which may be obtained upon request. While efforts are made to ensure specification accuracy, brochures are prepared and printed several months in advance of distribution and consequently cannot always immediately reflect either changes in specification or in some isolated cases the provision of a particular feature. Customers are always advised to discuss specific details with the supplying Dealer, especially if a selection is dependent upon one of the features advertised. Please contact your local dealer for information and specifications. Please note that the fuel consumption figures provided are results obtained by Honda under standardised testing conditions prescribed by WMTC. Tests are conducted on a rolling road using a standard version of the vehicle with only one rider and no additional optional equipment. Actual fuel consumption may vary depending on how you ride, how you maintain your vehicle, weather, road conditions, tyre pressure, installation of accessories, cargo, rider and passenger weight, and other factors. You accept that if you do go ahead and make a purchase or enter into any kind of transaction, whether for payment or not, you did so entirely in reliance on your own skill and judgement and not on that of anyone else.

**RIDE WITH STYLE** Read the owner's manual thoroughly. Get to know your machine and its capabilities. Concentration assists anticipation. Observe other road users' movements. Brake in plenty of time. Always wear a helmet and quality kit, ride fit and NEVER after drinking alcohol. Good roadcraft and courtesy identify the skilled and stylish rider. Honda endorse the law that all helmet visors must comply with BS 4110. Visors that transmit less than 50% of visible light cannot legally be used on the road.

**Honda Motor Europe - Motorcycles**  
Cain Road, Bracknell, Berkshire, RG12 1HL England  
[honda.co.uk](http://honda.co.uk)



Please don't bin me.  
Pass me on to a  
friend or recycle me.

Honda Motor Europe sources  
paper responsibly from  
manufacturers within the EU.



BLUE SKIES FOR  
OUR CHILDREN