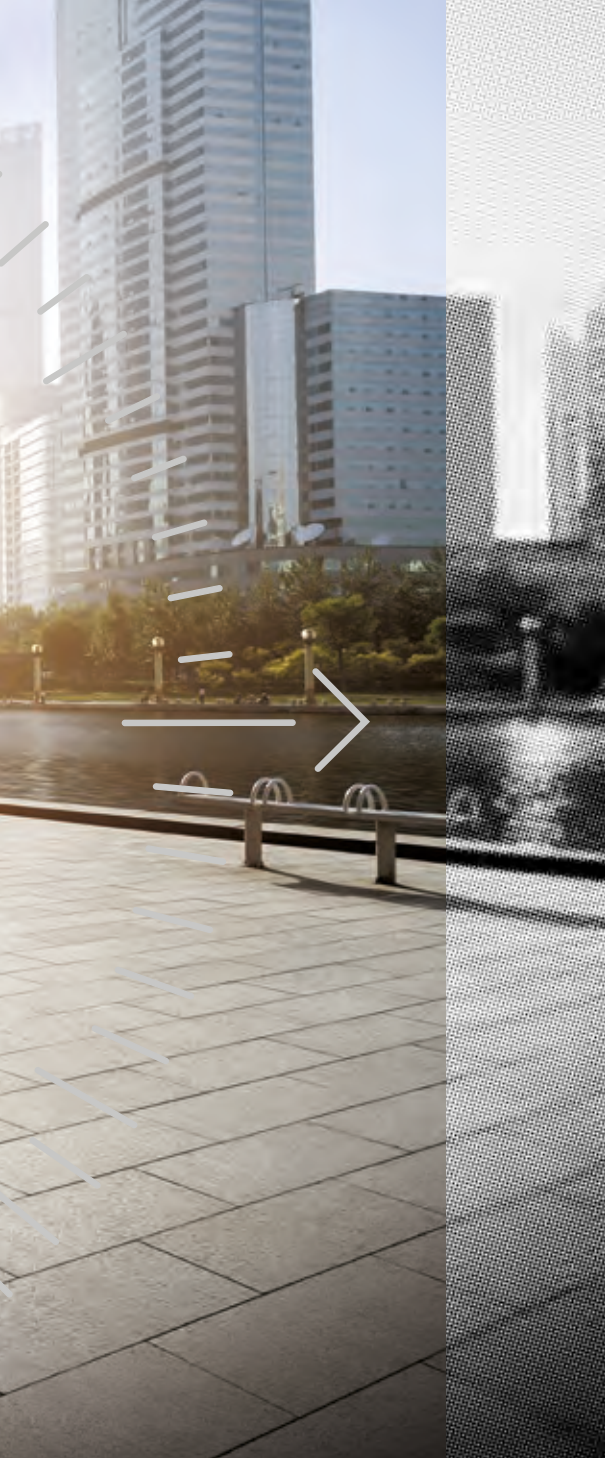




JEEP[®] COMPASS



Model shown Compass Limited with optional 19" wheels and bicolour paint



SEEK ADVENTURE WITH EVERY SUNRISE

The Jeep® Compass is dynamically styled for urban adventures combined with the capability and versatility expected from a Jeep. Inside, it's designed to add ultimate comfort to every journey and has the ability to unlock the potential of your smartphone whenever you are on the road. Add a 5 star Euro NCAP rating and navigate your next adventure in safety and style.



THERE'S A NEW LINE ON THE HORIZON

The Jeep® Compass displays the unmistakable seven-slot grille with a contemporary black gloss and chrome inlay. Traditional trapezoidal wheel arches are complemented with LED rear tail lights and a wrap-around 'day light opening' trim line.

Its imposing wide stance allows for great off-road durability and a tighter, stiffer feel for better handling and response on the road. With McPherson suspension and damping systems, plus the rugged Jeep® Compass frame, it's a smooth and enjoyable ride, whether you're navigating city streets or taking the road less travelled.





Model shown Compass Limited with optional 19" wheels and bicolour paint



INSIDE-OUT SATISFACTION

No matter how tough the terrain, you'll conquer it in comfort and style in the Jeep® Compass. You'll be surrounded by sculpted materials, state-of-the-art technology and connectivity. Explore the luxurious interior with the option of the Black and distinctive Ski Grey leather 8-way power seats. Revel in the warmth with heated front seats and steering wheel.

The centre stack bezel with soft-touch details is intuitively designed to put everything at your control. Whilst the leather-wrapped steering wheel controls put both Uconnect™ multimedia system and TFT driver display at your fingertips.

The Jeep® Compass available with the Dual Pane Sunroof lets the great outdoors in, with the expansive sky above you and the ergonomically designed seats surrounding you.





Ski Grey Leather interior with ruby red accent stitching and optional Dual Pane Sunroof

Navigation System



Apple CarPlay



android auto







Model shown Compass Limited with optional 19" wheels and bicolour paint



YOUR WHOLE WORLD, HANDS-FREE

The interactive Uconnect™ system comes with an integrated HD touch screen of up to 8.4". You can touch, tap and talk your way through its features without taking your eyes from the road ahead.

Uconnect™ is designed to liberate your smartphone when you're behind the wheel. It works with Apple CarPlay and Android Auto™, giving you full access via touch controls or Siri voice command to everything from your maps to messages. What's more, Uconnect™ LIVE brings you all your favourite apps. You can soundtrack every journey (with TuneIn Radio and Deezer) as well as stay connected to the world beyond with news alerts and you can check-in to your social media when you're parked up (Facebook Check in, Twitter and Reuters).

TomTom Live brings you real-time information on your journey, while my:Car and eco:Drive monitor your driving style to help you reduce your fuel consumption. When you take the Compass off-road, Uconnect™ kicks it up a gear. The Jeep® Skills App has information on Jeep® trails with specific off-road gauges measuring pitch, roll, pressure and altitude, all to help you take your performance to the next level.

*Android, Android Auto™, Google Play and other marks are trademarks of Google Inc.
Features available depending on version.



POWER TO GO

We know that Jeep® drivers like to tread the path less travelled. It's why the Compass comes with plenty of options, so you can specify your vehicle to suit the path you choose.

Make your selection from the engine and drivetrain combinations, featuring the class-leading nine-speed automatic transmission designed to give both power and efficiency when it's needed most. Choose the 1.4-litre MultiAir II Turbo petrol engine delivering 140hp, six-speed manual transmission and 4x2 setup, or 170hp with nine-speed automatic transmission and 4x4 configuration.

Or select the efficient 1.6 litre MultiJet II 120hp diesel engine with 6-speed manual transmission and 4x2 setup. Alternatively the 2.0 litre MultiJet II delivers 170hp with nine-speed automatic transmission and a 4x4 configuration in the TrailHawk version.



6-Speed Manual
Transmission

9-Speed Automatic
Transmission

1.6 litre MultiJet II
120 HP

2.0 litre MultiJet II
170 HP

1.4 litre MultiAir II
140/170 HP



Model shown Compass Limited with optional 19" wheels and bicolour paint

Parkview™ rear back-up camera

The rear camera is displayed on the Uconnect™ screen creating a guide path to follow when reversing.



Rear cross path detection

Backing up is now a walk in the park. Sounds and icons notify the driver if another vehicle is approaching when the Jeep® Compass is in reverse.



Blind spot monitoring

A radar system offers an extra set of eyes on the rear blind zones. When changing lanes or being passed, an icon appears in the side mirror to notify the driver.



Forward collision warning plus

The Jeep® Compass has your back, and your front too. Strategically placed cameras and radars detect and notify the driver, both audibly and visually, in case of a potential collision. If the driver doesn't react in time the system will automatically brake to avoid or mitigate the impact.



Parallel & perpendicular park assist

Ultrasonic sensing elements enable the Jeep® Compass to park itself. Activate the system, sit back and follow the instructions. The system can also take over when exiting from a parallel space.



Lane departure warning plus

If the vehicle moves outside lane markings without the indicator being used, the system will alert the driver and if no action is taken, will automatically steer back into lane.

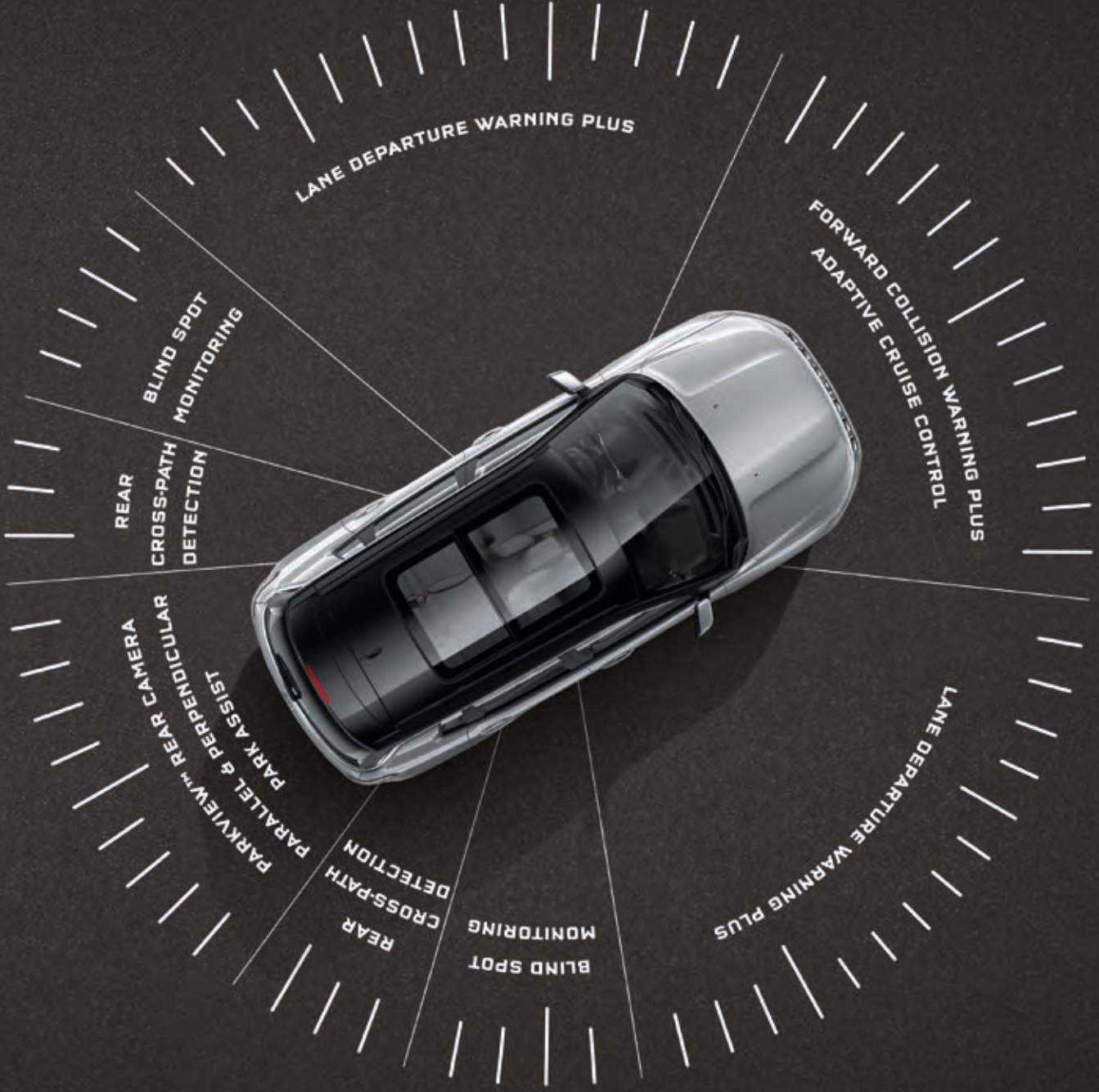


Adaptive cruise control

This detects slower traffic ahead when cruise control is activated. It adjusts to a safe distance with controlled braking and deceleration then returns to the set speed when the road ahead is clear.

ALWAYS IN CONTROL

Not every path is the easiest but with over 70 active and passive safety and security features available, the Jeep® Compass helps keep danger at a distance.



LANE DEPARTURE WARNING PLUS

FORWARD COLLISION WARNING PLUS
ADAPTIVE CRUISE CONTROL

BLIND SPOT
MONITORING

REAR
CROSS-PATH
DETECTION

PARKVIEW™ REAR CAMERA
PARALLEL & PERPENDICULAR
PARK ASSIST

REAR
CROSS-PATH
DETECTION

REAR
BLIND SPOT
MONITORING

LANE DEPARTURE WARNING PLUS

LET INSTINCT DECIDE

The right tools and technique make any road conquerable. That's why the Jeep® Compass comes fully equipped. The Jeep® Active Drive is an authentic 4x4 system with single speed power transfer unit and rear drive module.

Selec-Terrain™ gives instant access to calibrated settings for Auto, Snow, Mud, Sand (and Rock for Trailhawk version). Each mode has its own algorithm to optimise up to 12 on-board systems so you can select the perfect setting for each terrain.

In Auto mode, the Jeep® Compass will read the road for you. Its Active Drive system analyses conditions, traction and speed, automatically switching chassis control. What's more, the variable wet clutch makes sure you've always got the right amount of torque for every condition and automatically disconnects the rear axle when front-wheel drive is sufficient. Perfect power and improved fuel efficiency, without you having to do a thing.

JEEP® ACTIVE
DRIVE

SELEC-TERRAIN™

REAR AXLE DISCONNECT





PERFECT NATURAL SELECTION

The road ahead is full of surprises, but whatever the conditions, the Jeep® Compass is always ready to take you further. Use Selec-Terrain™ to match the conditions yourself, or let the Auto mode do the job for you.

Auto

This is everyday driving that's ready for everything. Auto mode has you covered, flawlessly connecting and disconnecting rear-wheel drive based on weather and surface. Maximum control, handling and efficiency.

Snow

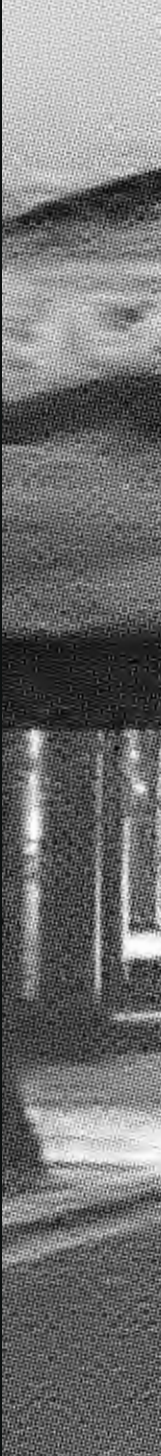
Life doesn't stop when it's cold, neither does the Jeep® Compass. Switch to Snow mode for full-time four-wheel drive and maximum traction. No need to worry about oversteering, you'll have more control and stability when it's needed most.

Mud

Running into mud needn't turn into a sticky situation. In Mud mode the four-wheel drive system adjusts for maximum low-speed traction and additional wheel slip. So you can get through it without getting your hands dirty.

Sand

How do you keep moving on surfaces that won't stay still? Activate Sand mode. Instantly get maximum traction and wheel-slip with specially calibrated differentials and transmission ratios perfect for looser, sand-covered surfaces.



SAND

SNOW



AUTO

MUD



REDEFINE LIMITLESS

The Jeep® Compass Trailhawk redefines limits. To earn its Trail Rated® badge it's been through a series of gruelling all-terrain tests. We've tested it rigorously in five categories (traction, manoeuvrability, articulation, water fording and ground clearance) on some of the toughest trails on the planet.

It's got everything it needs: best-in-class 4x4 capabilities, front and rear bumpers especially designed to improve approach and departure angles, signature red rear tow hook, 17" off-road wheels, increased ride height and skid plates.

Under the bonnet, the Jeep® Compass Trailhawk comes equipped with 170 hp 2.0 litre MultiJet II engine, nine-speed automatic transmission and 4X4 Jeep® Active Drive Low system.

What's more, the additional Rock mode on the Selec-Terrain™ and Jeep® Active Drive Low adds mountaineering to its list of capabilities. With a staggering 20:1 crawl ratio and hill descent control which alters each wheel's speed, safely bringing you down from your mountaintop.



33.6°

24.4°

21.6

30°



Model shown Compass Trailhawk with bicolour paint.

LONGITUDE



STANDARD EQUIPMENT:

- Body colour, electric & heated exterior mirrors
- Body colour door handles
- Halogen reflector headlamps
- Automatic headlamps
- Rain sensitive windshield wipers
- LED tail lamps
- 3.5" TFT monochrome instrument cluster
- Rear 60/40 split folding seat
- Cruise control
- Forward collision warning-plus
- Lane departure warning-plus
- Chrome exterior window surround (DLO)
- Black roof rails
- Front fog and cornering lamps
- Auto dimming rear view mirror
- Power folding door mirrors
- Uconnect™ 8.4" DAB radio with touchscreen, satellite navigation and Bluetooth®
- Apple CarPlay and Android Auto™ functionality
- Fabric & faux leather upholstery
- Driver seat with electric lumbar adjustment
- Ambient LED interior lighting
- Dual zone climate control
- Parkview® rear back-up camera
- Keyless Enter-N-Go™



17" TECH SILVER
ALLOY WHEELS

NIGHT EAGLE



INCLUDES LONGITUDE FEATURES, PLUS OR REPLACING:

- Black 18" alloy wheels
- Black grille
- Black window surrounds
- Gloss black fog lamp bezels
- Gloss black badges
- Winter Pack:
 - All season floor mats
 - Heated front seats
 - Heated steering wheel
 - Windshield wiper deicer

19" GLOSS BLACK
ALLOY WHEELS
Optional on Night Eagle



18" GLOSS BLACK
ALLOY WHEELS



LIMITED



INCLUDES LONGITUDE FEATURES, PLUS OR REPLACING:

- Chrome exhaust tip
- Roof rails with chrome insert
- Deep tint sunscreen glass
- Exterior door mirrors with courtesy lamps
- Halogen projector headlamps
- LED signature lighting
- 7" TFT colour instrument cluster
- Uconnect™ 8.4" DAB radio with Alpine audio & satellite navigation, 9 speakers
- Leather 8-way power, heated seats*
- Rear 60/40 split folding rear seat with boot pass-through
- Heated steering wheel
- All weather floor mats
- Windshield wiper de-icer
- Parksense® front & rear park assist system
- Blind spot and cross path detection
- Parallel & perpendicular park assist

*Removes storage under passenger seat

19" DIAMOND CUT AND GLOSS BLACK ALLOY WHEELS
Optional on Limited



18" SILVER AND TECH GREY ALLOY WHEELS



TRAILHAWK



INCLUDES LONGITUDE FEATURES, PLUS OR REPLACING:

- Bonnet Decal
- Accent colour roof rails and mirrors
- Deep tint sunscreen glass
- Exterior mirror courtesy lamps
- Halogen projector headlamps
- LED signature lighting
- Windshield wiper de-icer
- Trailhawk 8-way power, heated leather seats
- Rear 60/40 split folding seat with boot pass-through
- Heated steering wheel
- All weather floor mats
- 7" TFT colour instrument cluster
- Uconnect™ 8.4" DAB radio with Satellite navigation & Bluetooth®
- Parksense® front & rear park assist system
- Blind spot and cross path detection
- Parallel & perpendicular park assist
- Hill descent control
- Rock mode
- Full size spare wheel
- Front & rear off-road bumpers
- Raised off-road suspension
- Front, rear and under-body skid plates
- Red rear tow hook



17" OFF ROAD ALLOY WHEELS

COLOURS

Vocal
White
(Pearlescent)



Minimal
Grey
(Metallic)



Magnesio
Grey
(Metallic)



Hydro
Blue
(Metallic)



Colorado
Red*
(Pastel)



Brilliant
Black
(Metallic)



LONGITUDE



NIGHT EAGLE / LIMITED / TRAILHAWK



*Standard no cast paint

SEATS

Black fabric
and faux leather



LONGITUDE /
NIGHT EAGLE

Black
leather
with Tan
accent
stitching



LIMITED

Ski Grey
leather
with Ruby
Red accent
stitching



Black leather
with Ruby Red
accent stitching

TRAILHAWK



IF YOU WANT TO BE ORIGINAL YOU MUST BE AUTHENTIC

CHOOSE ACCESSORIES AND SERVICES BY MOPAR.

Jeep® Compass can be accessorised just as you see fit. Mopar® and Jeep® provides you with the opportunity to make your car as unique as you. The wide range of Mopar® accessories ensures that no matter where you go and what you do, Mopar® will have an accessory to meet your needs. With various options like the Cargo Organiser with Telescopic bar that prevents your luggage from moving around, or Roof Rails and Roof Boxes, so you can bring your skis, bicycle or extra-large cargo with you while you explore the city or great outdoors, there's no reason to be unprepared

Mopar® Vehicle Protection offers a series of premium extended warranty and maintenance plans that will keep your Jeep® Compass going in the right direction, always. With Jeep's stamp of approval, genuine parts, highly qualified and specialised technicians, there's no better way to keep your car on the road, and mind at ease. Choose the service contract that fits you best!



MOPAR®

At your service

For further information, visit www.jeep.co.uk/mopar



I AM JEEP. CUSTOMER CARE

i am Jeep 00 800 0 I AM JEEP
00 800 0 426 5337

You can contact Jeep, by calling the dedicated Freephone Number 00 800 0 426 5337* reachable from most European countries. We are at your disposal to provide Road Assistance services, active 365 days a year, 24 hours a day. By contacting Jeep, Customer Care you can also request info on our models, services, retailer network and, lastly, book a test drive on a vehicle of your choice. Jeep, is at your disposal to satisfy every necessity or request linked to the use of your vehicle or our assistances services.

*Remember to check the call costs with your phone provider when calling from abroad or mobile phones.

TECHNICAL DATA

ENGINE	1.6 MultiJet II 120hp 4x2 Manual	2.0 MultiJet II 170hp 4x4 Auto Low
Fuel Type	DIESEL	DIESEL
Availability	Longitude, Night Eagle, Limited	Trailhawk
Cubic Capacity (cc)	1598	1956
Valves	16	16
Bore x stroke (mm)	79.5 x 80.5	83.0 x 90.4
Compression ratio	16.5:1	16.5:1
Max. Power - hp / @ rpm	120 / 3750	170 / 4000
Max. Power - kW / @ rpm	88 / 3750	125 / 4000
Max. Torque - Nm / @ rpm	320 / 1750	380 / 1750
Euro Emissions Standard	Euro 6d	Euro 6d
TRANSMISSION		
Transmission	Manual, 6 speed	Automatic, 9 speed
Traction system	Front Wheel Drive	4x4 Jeep® Active Drive with disconnect system
STEERING		
Type	Electric power steering	Electric power steering
Overall Ratio	15.6:1	15.6:1
Steering turns (lock to lock)	2.68	2.76
Turning Diameter (kerb to kerb in metres)	11.07	10.76
DIMENSIONS		
Height at roof rails (mm)	1629	1660
Length (mm)	4394	4398
Width with mirrors (mm)	2033	2033
Wheelbase (mm)	2636	2636
Track front / rear (mm)	1547 / 1542	1540

1.4 MultiAir II
140hp 4x2 Manual

1.4 MultiAir II
170hp 4x4 Auto

PETROL	PETROL
Longitude, Night Eagle, Limited	Limited
1368	1368
16	16
72.0 x 84.0	72.0 x 84.0
10.0:1	10.0:1
140 / 5000	170 / 5500
103 / 5000	125 / 5500
230 / 1750	250 / 2500
Euro 6d	Euro 6d
Manual, 6 speed	Automatic, 9 speed
Front Wheel Drive	4x4 Jeep® Active Drive with disconnect system
Electric power steering	Electric power steering
15.6:1	15.6:1
2.68	2.68
11.07	11.07
1629	1644
4394	4394
2033	2033
2636	2636
1547 / 1542	1550 / 1545

TECHNICAL DATA CONTINUED

ENGINE	1.6 MultiJet II 120hp 4x2 Manual	2.0 MultiJet II 170hp 4x4 Auto Low
Fuel Type	DIESEL	DIESEL
Availability	Longitude, Night Eagle, Limited	Trailhawk
CAPABILITY		
Approach Angle (degrees)	15.8	30.0
Departure Angle (degrees)	30.8	33.6
Break Over Angle (degrees)	21.8	24.4
Ground clearance (mm)	198.0	216.0
Water fording (mm)	406.4	482.6
WEIGHTS & CAPACITIES		
Kerb Weight Max. (kg)	1540	1735
Max. Towing Capacity - Unbraked Trailer (kg)	450	450
Max. Towing Capacity - Braked Trailer (kg)	1000	1500
Fuel tank capacity (L)	60	60
Max. Cargo Volume (with inflator kit) (L)	438	438
PERFORMANCE		
0-62 mph (0-100 Km/h) (sec)	11.0	9.5
Max. Speed mph (km/h)	122 (196)	114 (184)
FUEL CONSUMPTION & EMISSIONS*		
WLTP Combined Emission CO ₂ (g/km) min/max	151 / 159	TBA ¹
WLTP Combined Low mpg (l/100km)	48.7 / 5.8	TBA ¹
WLTP Combined High mpg (l/100km)	46.3 / 6.1	TBA ¹

*Fuel consumption & CO₂ figures determined on the basis of the new WLTP test procedure as per Regulation (EU) 2017/1347. Only compare fuel consumption and CO₂ figures with other cars tested to the same technical procedures. These figures may not reflect real life driving results, which will depend upon a number of factors including the accessories fitted (post-registration), variations in weather, driving styles and vehicle load. ¹TrailHawk version available from mid 2020.

1.4 MultiAir II
140hp 4x2 Manual

1.4 MultiAir II
170hp 4x4 Auto

PETROL	PETROL
Longitude, Night Eagle, Limited	Limited
15.8	16.8
30.8	31.7
21.8	22.9
198.0	208.0
406.4	406.4
1505	1615
450	450
1000	1000
60	60
438	438
9.9	9.5
119 (192)	127 (204)
169 / 179	175 / 177
37.7 / 7.5	31.0 / 9.1
34.9 / 8.1	29.7 / 9.5

STANDARD/OPTIONAL

EXTERIOR & STYLING	LONGITUDE	NIGHT EAGLE	LIMITED	TRAILHAWK
Door mirrors: power folding	S	S	S	S
Heated & adjustable door mirrors with indicators	S	S	S	S
Deep tint sunscreen glass	-	-	S	S
Dual pane panoramic sunroof	-	-	O	-
LED tail lamps	S	S	S	S
Body colour door mirrors	S	S	S	-
Neutral Grey colour door mirrors	-	-	-	S
Black fog lamp bezels	S	S	-	-
Chrome fog lamp bezels	-	-	S	-
Neutral Grey fog lamp bezels	-	-	-	S
Chrome exterior accents	-	-	S	-
Black & Neutral Grey grille	-	-	-	S
Black & chrome front grille	S	S	S	-
Neutral Grey window surrounds	-	-	-	S
Chrome window surrounds	S	-	S	-
Black window surrounds	-	S	-	-
Body colour door handles	S	S	S	S
Black roof rails	S	S	-	-
Black roof rails with chrome insert	-	-	S	-
Neutral Grey roof rails	-	-	-	S
Trailhawk bonnet decal	-	-	-	S
Chrome exhaust tip	-	-	S	-
16" Tech Silver alloy wheels	-	-	-	-
17" Tech Silver alloy wheels	S	-	-	-
17" off road alloy wheels	-	-	-	S
18" Silver and Tech Grey alloy wheels	-	-	S	-
18" Black alloy wheels	-	S	-	-
19" Black alloy wheels	-	O	-	-
19" Diamond cut and Gloss Black alloy wheels	-	-	O	-

Some options may require additional options to be purchased

INTERIOR & COMFORT	LONGITUDE	NIGHT EAGLE	LIMITED	TRAILHAWK
Steering wheel mounted audio controls	S	S	S	S
Black fabric & faux leather seats	S	S	-	-
Black fabric seats	-	-	-	-
Driver's manual height adjustable seat	S	S	-	-
60/40 split folding rear seat	S	S	-	-
60/40 split folding rear seat with trunk pass through	-	-	S	S
Front and rear floor mats	O	-	-	-
All-weather floor mats with Jeep logo	-	S	S	S
Air conditioning	-	-	-	-
Dual zone climate control	S	S	S	S
Power 8-way driver / passenger seats with lumbar adjust	-	-	S	S
Heated steering wheel	-	S	S	S
Heated Front Seats	-	S	S	S
Rear air-conditioning and heater vents	S	S	S	S
12v auxiliary power outlet, cargo area	S	S	S	S
12v auxiliary power outlet, front	S	S	S	S
230V auxiliary power outlet	S	S	S	S
One touch front power windows	S	S	S	S
Electric power steering	S	S	S	S
Black leather seats - heated	-	-	S	S
Ski Grey leather seats - heated	-	-	O	-
Leather wrapped steering wheel	S	S	S	S
SAFETY & TECHNOLOGY				
Instrument cluster with 7" colour TFT display	-	-	S	S
Instrument cluster with 3.5" Monochrome TFT Display	S	S	-	-

S Standard O Optional - Not Available

STANDARD/OPTIONAL CONTINUED

SAFETY & TECHNOLOGY CONTINUED	LONGITUDE	NIGHT EAGLE	LIMITED	TRAILHAWK
Uconnect™ 5" DAB radio with touchscreen, USB, AUX and bluetooth®	-	-	-	-
Uconnect™ 8.4" DAB radio with touchscreen, USB, AUX, satellite navigation and bluetooth®	S	S	S	S
Apple CarPlay and Android Auto™ integration	S	S	S	S
Uconnect live	S	S	S	S
6 speakers	S	S	-	S
Alpine Audio 9-speaker system	-	-	S	-
Start&Stop	S	S	S	S
Pretensioning seatbelts	S	S	S	S
Rain sensitive windscreen wipers	S	S	S	S
Gear shift indicator	S	S	S	S
All-speed traction control	S	S	S	S
Electronic roll mitigation	S	S	S	S
Advanced brake assist	S	S	S	S
Electronic stability control	S	S	S	S
Hill start assist	S	S	S	S
Trailer Sway Damping	S	S	S	S
Front height-adjust seatbelts	S	S	S	S
Child seat anchor system	S	S	S	S
Airbags: advanced multistage front, front side & side curtain (front & rear)	S	S	S	S
Auto-dimming rear view mirror	S	S	S	S
Keyless enter-n-go	S	S	S	S
Keyless entry: remote	-	-	-	-
Immobiliser	S	S	S	S
Rear door child protection locks	S	S	S	S
Lane Departure Warning Plus	S	S	S	S
Halogen projector headlamps	-	-	S	S
Halogen reflector headlamps	S	S	-	-

Some options may require additional options to be purchased
 ^Automatic versions only.

SAFETY & TECHNOLOGY CONTINUED	LONGITUDE	NIGHT EAGLE	LIMITED	TRAILHAWK
Daytime running lamp system	S	S	S	S
Front fog and cornering lamps	S	S	S	S
Premium security alarm	S	S	S	S
Forward collision warning plus	S	S	S	S
Active speed limiting device	S	S	S	S
Windscreen wiper de-icer	-	-	S	S
Cruise control	S	S	S	S
Full size spare wheel	-	-	-	S
Full size temporary use spare wheel	O	O	O	-
ParkView® rear back-up camera	S	S	S	S
Parksense front & rear park assist system	-	-	S	S
Blind spot & cross path detection	-	-	S	S
Parallel & perpendicular park assist	-	-	S	S
Electronic park brake	S	S	S	S
Tyre repair kit	S	S	S	-
4x4 CAPABILITY				
Selec-Terrain™	4x4 only	-	4x4 only	S
Rear Axle Disconnect	4x4 only	-	4x4 only	S
Off-road suspension	-	-	-	S
Hill descent control	-	-	-	S
Skid plate shield - transmission, fuel tank, transfer case & front suspension	-	-	-	S
Red rear tow hook	-	-	-	S
PACKS				
Style pack (19" Alloy wheels and 235/40R19 3-season tyres)	-	-	O	-
Towing pack (Trailer hitch (gooseneck) and 13-Pin wiring harness)	O	O	O	O

S Standard O Optional - Not Available

Jeep®

This brochure is a publication of Fiat Chrysler Automobiles UK Ltd. The contents of this brochure relates to Jeep, Compass MY20. All product illustrations and specifications are based upon current information at the time of publication approval. Vehicles may show standard and optional features. Fiat Chrysler Automobiles reserves the right to make changes from time to time, without notice or obligation, in prices, specifications, colours, materials, and to change or discontinue models, which are considered necessary to the purpose of product improvement or for reasons of design and or marketing. Jeep, is a registered trademark of FCA US LLC.



Jeep, Owners Group is the official club of the Jeep, brand - a place where Jeep, owners can meet the Jeep, brand; have the chance to experience the pure passion for off road and immerse themselves in the Jeep, lifestyle. Join us! Visit: ownersgroup.jeep.com/en

240 Bath Road, Slough, Berkshire SL1 4DX

jeep.co.uk

SHARE ON:



Published April 2020 - Printed in England - Vario Press Limited